


# Hamptons

INTERNATIONAL



## PEBBLE APARTMENTS, Ipsos, Corfu

4  2  2 

**£480,000**

(€550,000)

## Property details



### Key features

- Land size - 180 m2
- Across the road from the beach!
- Established holiday rentals

### Attributes

- 🏊 Swimming pool
- Apartment
- 🏖️ Near to beach
- 🌿 Garden

## PEBBLE APARTMENTS, Ipsos, Corfu

4 🛏️ 2 🚿 2 🚿

**£480,000**  
**(€550,000)**

## Description

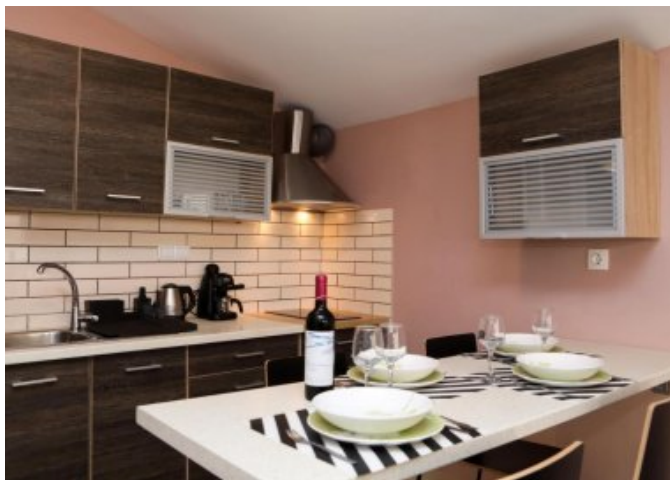
A pair of two bedroomed apartments in the centre of Ipsos. These two apartments are set back from the main road at Ipsos and just a short walk to the beach. The first apartment has an open plan kitchen/sitting area, two double bedrooms and a shower room. The second apartment is almost identical in design, but is slightly larger and one of the bedrooms is ensuite. Both exit onto a shaded courtyard garden, with enough space for the addition of a small plunge pool or jacuzzi. They are already set up as successful holiday lets during the summer months, popular due to their walking distance to the beach and all amenities.





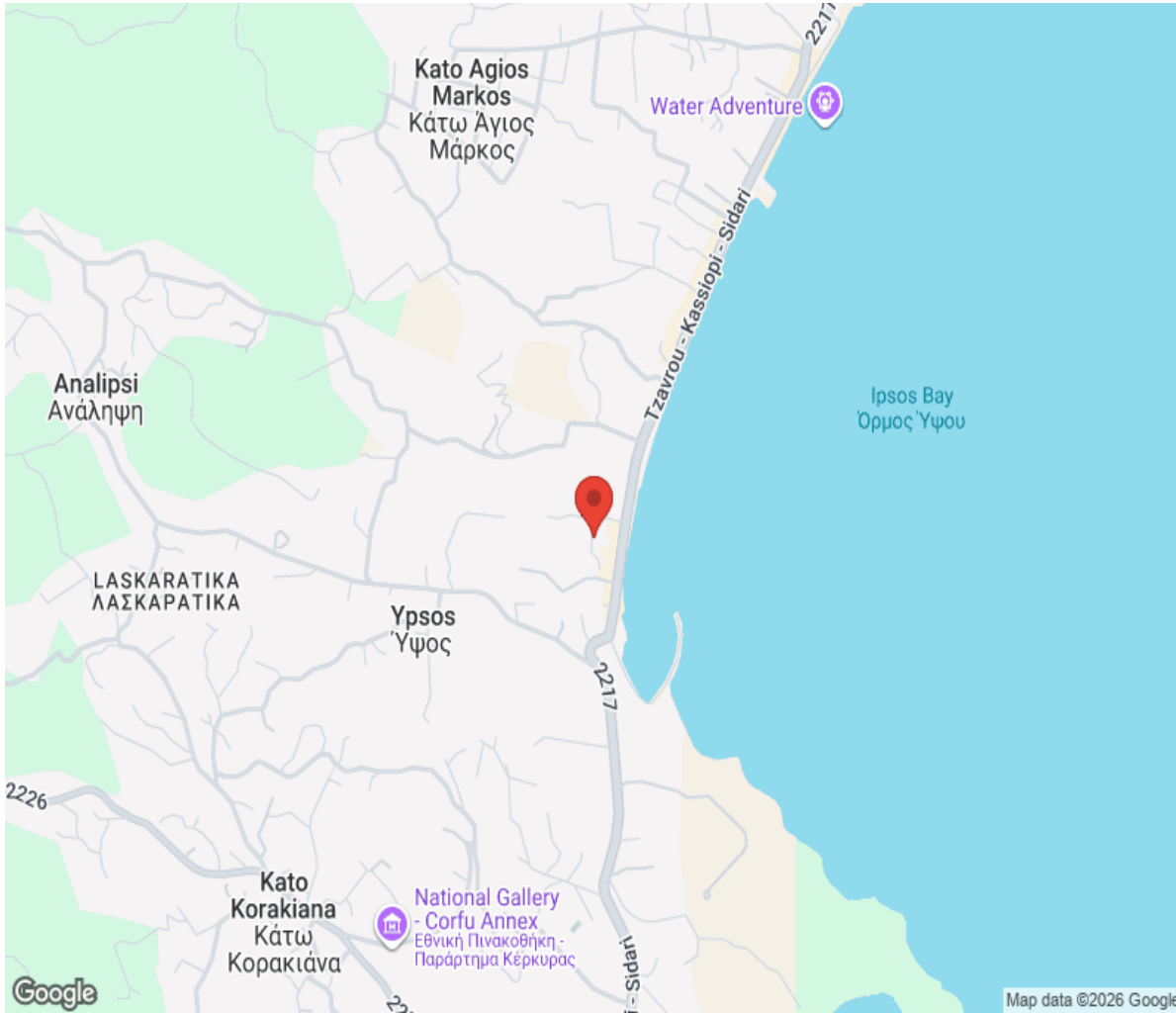








# Location



# Hamptons

INTERNATIONAL

**+44 (0)20 8618 4551**

**[international@hamptons.co.uk](mailto:international@hamptons.co.uk)**

**[www.hamptons-international.com](http://www.hamptons-international.com)**