

Hamptons

INTERNATIONAL



South Africa, KwaZulu Natal, Zululami Luxury Coastal Estate, Mvula Lane, 20 North Shore, 1

3  2  2 

£200,000
(R 4,415,000)






Property details



Key features




- 24 Hour Access
- Balcony
- Air Conditioner
- Covered Patio
- Estate
- Clubhouse
- Security Estate
- Air Conditioning Unit
- Lifestyle Estate
- Open Plan

Attributes

-  Swimming pool
-  Garage
-  Sea views
-  Near to beach
-  Refurbished

South Africa, KwaZulu Natal, Zululami Luxury Coastal Estate

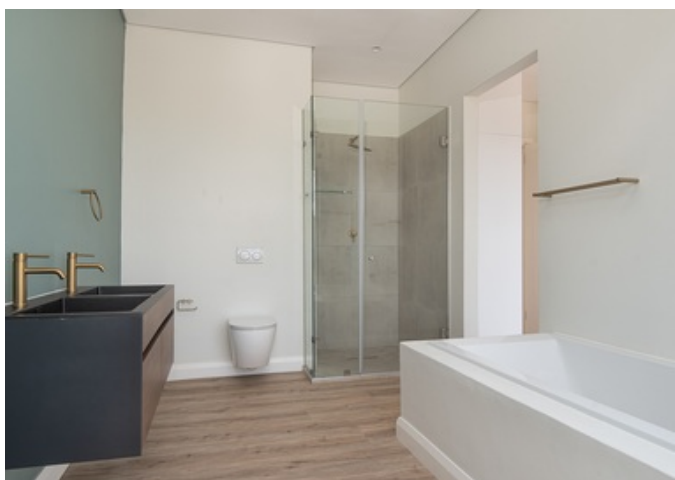
Nor

3  2  2 

£200,000
(R 4,415,000)

Description

BE QUICK TO OWN THIS BRAND NEW HOME WITH SEA VIEWS!**PRICE INCLUDES 15% VAT - NO TRANSFER DUTY PAYABLE**Seize the opportunity to be the first owner of this freshly completed modern townhouse in the up-and-coming Zululami Luxury Coastal Estate! This home is perfectly sized for a small family seeking freedom of movement in a secure estate environment. Light floods through the home, enhancing the generous size of the open-plan living spaces, which open out to a comfortably sized covered patio. Enjoy daily spoils with the fantastic sea views from the patio or the private balcony from the main bedroom. A separate scullery compliments the kitchen which has a sleek, clean design and ample storage space. The double garage has direct and convenient access into the home. To top it off, the stunning main estate clubhouse is within very short walking distance and the estate main gate is nearby. The designated architectural style for the residential homes in the Zululami Luxury Coastal Estate is a sleek modern aesthetic with large roof overhangs, courtyards, green planted roofs, and natural stone, concrete, and timber finishes. As a pet-friendly estate for two dogs, this site ticks all the boxes of location, sea views, forest, and wetland views plus there is an added benefit of residents having two beach access points.Zululami Luxury Coastal Estate is a 140-hectare development that is located within the heart of one of the best-performing residential areas in the country. Facilities that residents have access to include a beautiful clubhouse overlooking revitalized wetlands with a lap swimming pool and an amphitheatre for socializing; walking and running trails; tennis courts; children's play area; fishing in the estate's dams and easy access down to the beach for surfing, swimming and snorkelling. With a name that when directly translated means 'my heaven', this residential estate development offers a complete lifestyle offering.























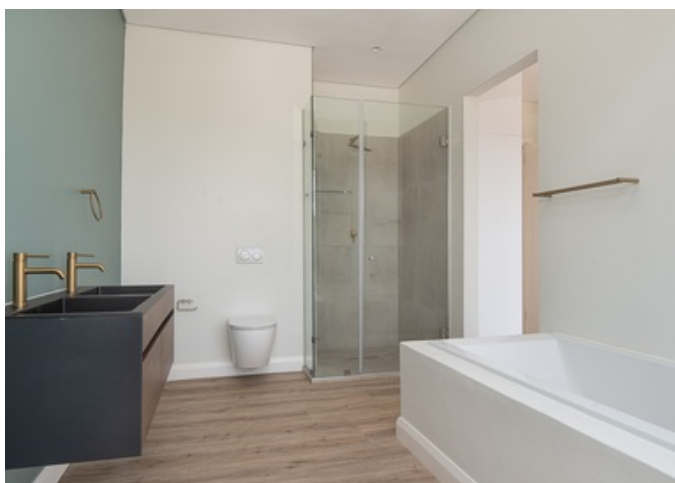






















Location



Hamptons

INTERNATIONAL

+44 (0)20 8618 4551

international@hamptons.co.uk

www.hamptons-international.com