

Hamptons

INTERNATIONAL



Hyde Vale, LONDON, SE10

5  3  3 

£2,500,000

(£2,500,000)

Property details



Key features

- **5 Bedrooms**
- **Grade II-Listed Georgian Townhouse**
- **Moments From Greenwich Park**
- **10 Minute Walk To Greenwich Main**
- **Excellent Condition**

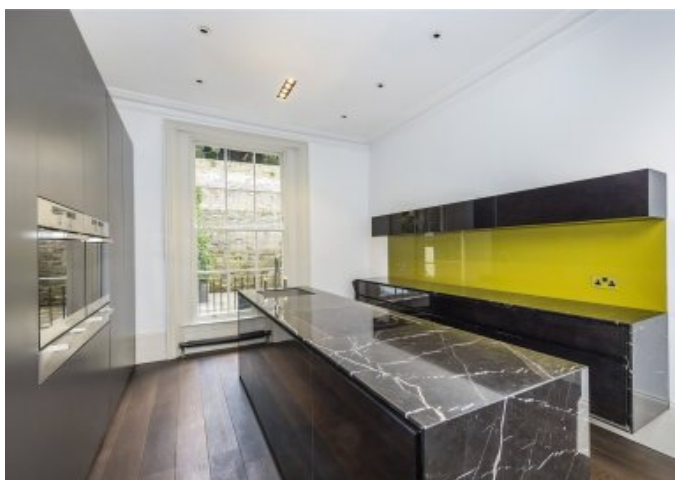
Hyde Vale, LONDON, SE10

5 🏠 3 🚗 3 🚗

£2,500,000
(£2,500,000)

Description

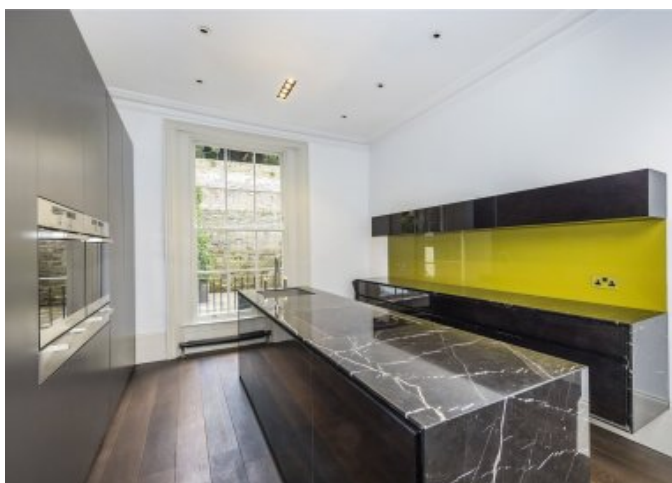
A stunning five bedroom Grade II-listed Georgian townhouse position on arguably West Greenwich's most desirable road. The property has been completely refurbished to create a modern and stylish home providing incredible living space, a lovely rear garden and a self-contained ground floor studio. This Grade II-listed five bedroom Georgian townhouse is positioned in the very heart of West Greenwich on Hyde Vale within moments of Greenwich Park and Town Centre. The house is offered in immaculate decorative order having undergone an extensive schedule of renovation to create a stylish and modern home while still retaining many of its period features including fireplaces in many of the rooms, wooden flooring, sash windows and original shutters. The house offers excellent living space with the kitchen and dining room positioned on the ground floor and a double reception room located on the first floor. With exceptionally high ceilings and large sash windows on each level, the house has an incredibly light and spacious feel throughout. The kitchen is of a contemporary design featuring marble worktops, floating cabinets and fully integrated appliances. The principal bedroom suite is located on the second floor featuring bespoke fitted wardrobes and an incredible ensuite bathroom with a feature bathtub, walk-in shower and stone basins. On the top floor are an additional three bedrooms, all of which are a generous size and have use of the family bathroom also featuring a bathtub and wet room shower. The rear garden has been beautifully landscaped and, set over several levels, provides fantastic outdoor family and entertaining space. There is an additional level on the lower ground floor which has been designed to create a completely self-contained studio with its own kitchen and shower room perfect for relatives, a live in nanny or older children. The flexible space could also be utilised as a games/cinema room or as a home study if required. This really is a rare opportunity to acquire one of the most substantial family homes on the road with no onward chain and ready to move straight into. Situation Hyde Vale is a sweeping road in West Greenwich within easy reach of all of Greenwich's shops, bars and restaurants as well as the historical places of interest such as the National Maritime Museum, Royal Observatory and the Royal Naval College. It's a short walk from both Cutty Sark and Greenwich DLR stations as well as the Mainline Rail Station at Greenwich giving fast and convenient access into Canary Wharf and the City. Additional Information Council tax - Band H5 Bedrooms Grade II-Listed Georgian Townhouse Moments From Greenwich Park 10 Minute Walk To Greenwich Mainline and DLR Station Excellent Condition



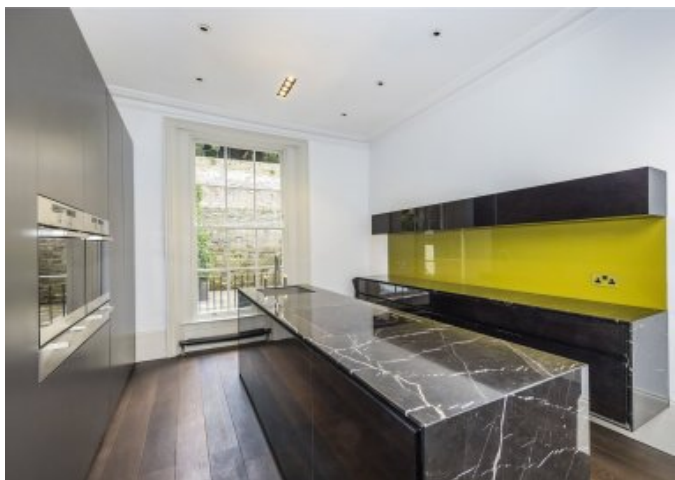








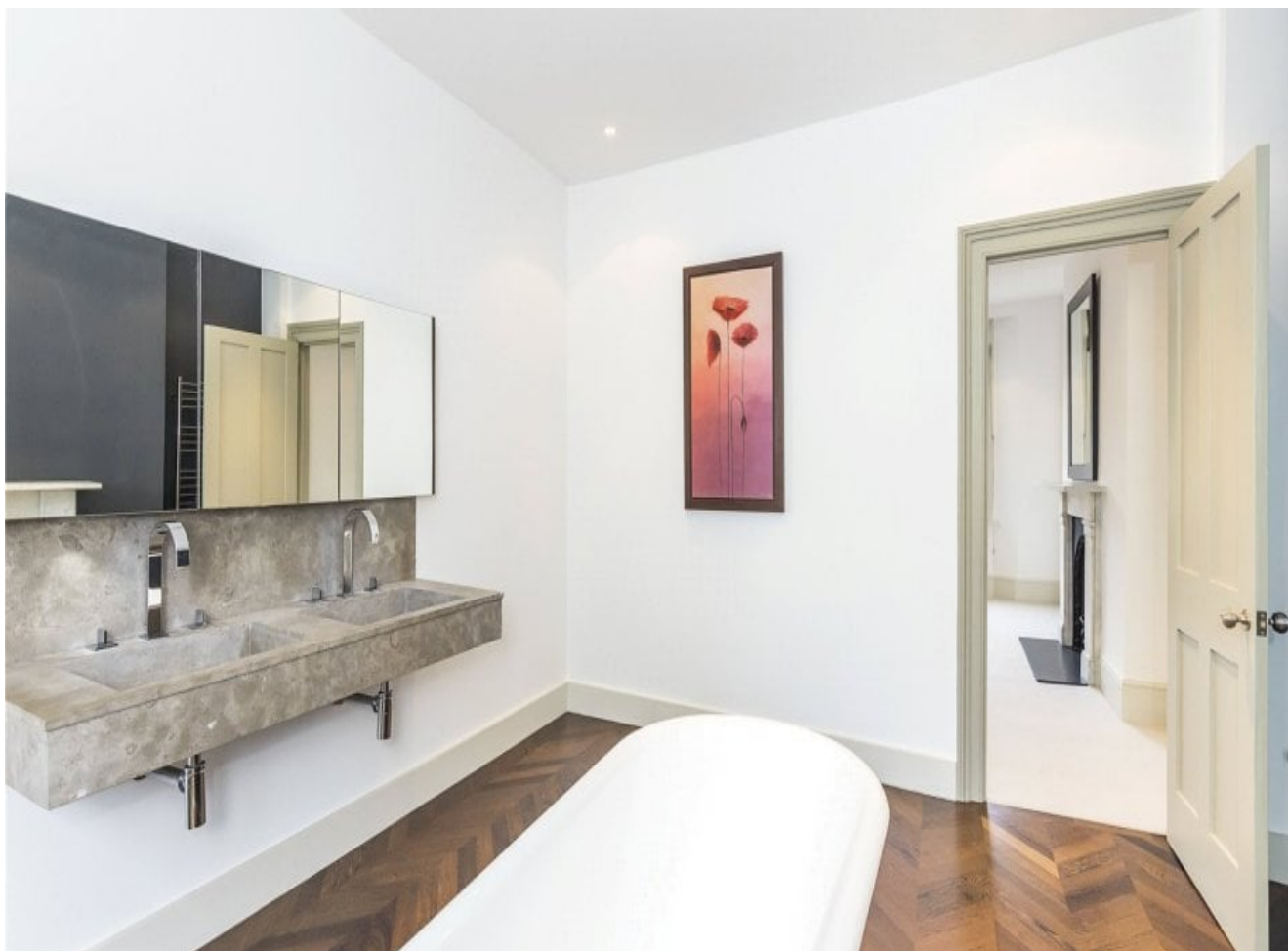
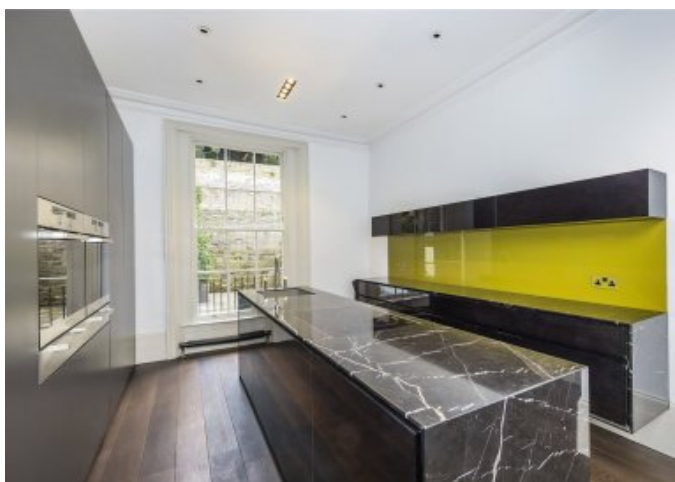




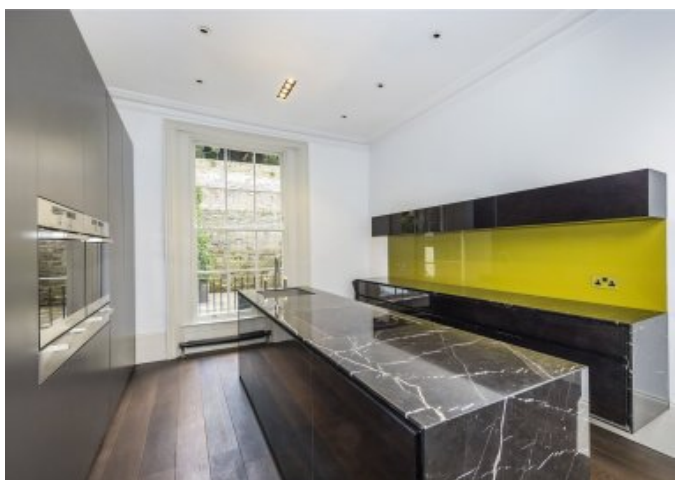




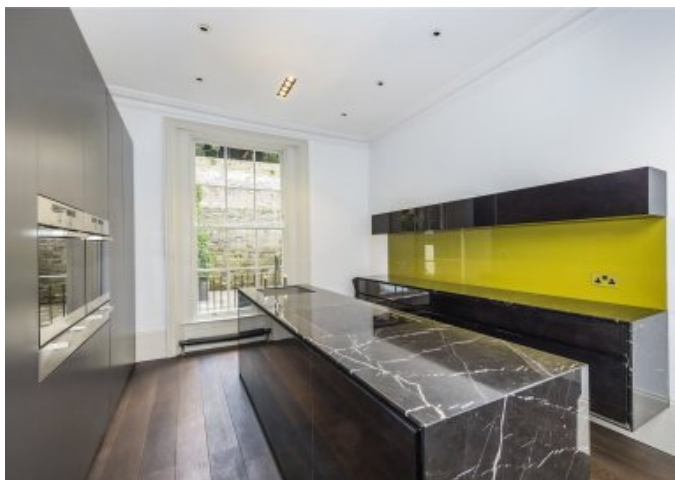














Floor plan



Hyde Vale

Approximate Gross Internal Area
Lower Ground Floor = 62.9 sq m / 570 sq ft
Ground Floor = 62.9 sq m / 570 sq ft
First Floor = 63.2 sq m / 574 sq ft
Second Floor = 50.0 sq m / 539 sq ft
Third Floor = 50.0 sq m / 539 sq ft
Total = 259.3 sq m / 2792 sq ft

This plan is for layout guidance only. Not drawn to scale unless stated. Windows and door openings are approximate. Whilst every care is taken in the preparation of this plan, please check all dimensions, shapes and contents, bearings, before making any decisions, select, appoint them.

powered by
THE360IMAGE
www.the360image.co.uk

Location



This site can't load Google Maps correctly.

Do you own this website?
g.co/staticmaperror/signature



This site can't load Google Maps correctly.

Do you own this website?
g.co/staticmaperror/signature

Hamptons

INTERNATIONAL

+44 (0)20 8618 4551

international@hamptons.co.uk

www.hamptons-international.com