

# Hamptons

INTERNATIONAL



**Botswana, South-East District, Kgale**

4 🛏 2 🚗 2 📧

**£150,000**  
**(BWP 2,699,884)**




## Property details



### Attributes

-  Garage
-  Gym

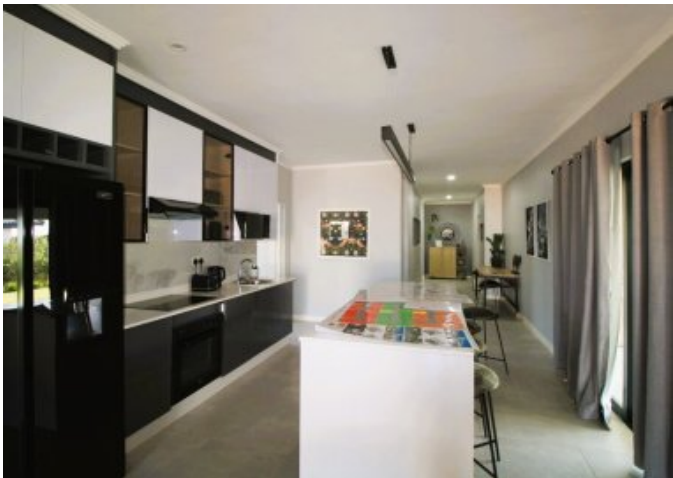
**Botswana, South-East District, Kgale**

4  2  2 

**£150,000**  
**(BWP 2,699,884)**

## Description

Sesha Mews - Secure, family-friendly, low density housing estate in Kgale\*\*\* OFF-PLAN SALES \*\*\* NEW DEVELOPMENT \*\*\*Sesha Mews is conveniently located in Kgale within close proximity to shopping centres, medical facilities, schools, and good transport routes, Sesha Mews offer off-plan sales of 3 and 4 bed roomed homes. Ideal for young families and first-time buyers, there are 4 designs to choose from and a host of optional finishes from roof coverings, paint colours, floor tiles and whether you would like an additional scullery or garage. You can personalise your home to your specification and budget. The complex is designed to be low to medium density so you can enjoy space and privacy while still benefiting from the secure environment the complex provides. Security features include a perimeter boundary wall, electric fence and 24-hour manned, access controlled entrance. For families and outdoor enthusiasts there are 2 playgrounds, gym facilities, a club house and plenty of open green areas for relaxation. With prices starting from P2,225,000 (dependent on selected house, plot and finishes) this is a fantastic opportunity to own a home in the hub of Gaborone. NOTE: "No Transfer Duty" is applicable to citizens only.











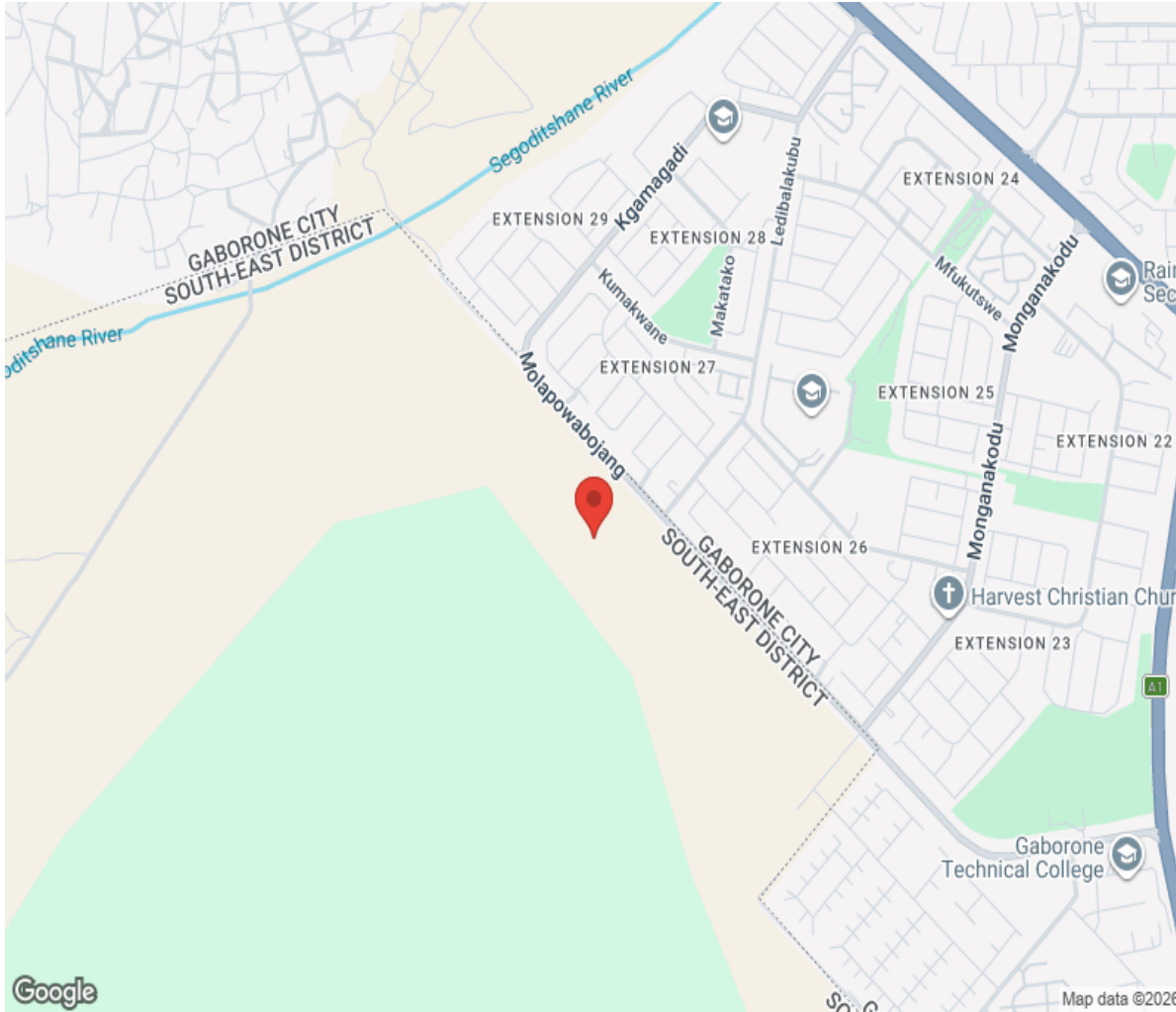






# Location

---



# Hamptons

INTERNATIONAL

**+44 (0)20 8618 4551**

**[international@hamptons.co.uk](mailto:international@hamptons.co.uk)**

**[www.hamptons-international.com](http://www.hamptons-international.com)**