

# Hamptons

INTERNATIONAL



**South Africa, KwaZulu Natal, Elaleni Coastal Forest Estate, Ingwe Drive, Unit 74  
Lush Condos, 1**

2  2  1 

**£130,000**  
**(R 2,660,000)**

## Property details



### Attributes

-  Tennis court
-  Swimming pool
-  Near golf course
- Apartment
-  Near to beach
-  Garden

**South Africa, KwaZulu Natal, Elaleni Coastal Forest Estate, Ingwe Drive, Unit 74 L**

**£130,000**  
**(R 2,660,000)**

2 🏠 2 🏠 1 🏠

---

## Description

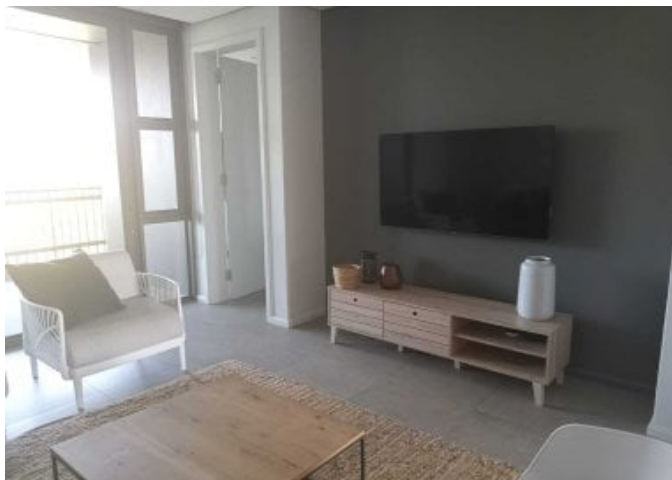
**FULLY FURNISHED 2 BEDROOM APARTMENT FOR SALE** This charming urban two-bedroom apartment in Fever Block of the Lush Condos is fully furnished and situated on the top level in the famous Elaleni Coastal Forest Estate. It is decorated and equipped in a highly modern, contemporary style, paying close attention to even the smallest details. As you walk in, you're welcomed by a respectably sized kitchen with a gas hob and oven. The layout of the apartment is centered on family interaction and simple enjoyment, with expansive interior living areas that flow into one another and a large covered balcony that looks out onto a well-kept garden. There are two spacious bedrooms, one with an ensuite, and a common bathroom with a shower, bathtub and sink. The apartment offers classic finishes and plenty of closet space. This stunning apartment is ideal for young families looking for a starter home, an investment, or a place to lock up and travel for the weekend or on vacation. Excellent condition, exquisite modern finishes, and an open layout that is skillfully designed for indoor-outdoor living characterize this top-floor walk-in apartment. The unit is ideally located next to several of the estate's attractions, including the Harvest Barn, Forest Clubhouse, Leisure Center, and The Woods Clubhouse, which contains a pool, kiddie pool, changing rooms, and braai areas. While kids play uninhibited outside, neighbors create a sense of community and friendships. Elaleni is home to the last remaining swamp fig forest of its kind in the area, which has inspired many eco-friendly elements on the estate. The estate boasts state-of-the-art clubhouses, elevated forest boardwalks, running and walking trails and kiddies play parks. The exciting inclusion of the brand new Elaleni Beach Club is located primely on Salt Rock main beach. This estate has everything you want and could need. Interactive spaces serve the greater community while tranquil places are there to allow an escape into the soporific surrounds of the forest. Children can thrive and live to the maximum in complete safety- energetic play areas, clubhouses, and pools are theirs for fun anytime. Sitting in an envelope of greenery, the exterior is the backdrop against which life happens at Lush.

**RESIDENTIAL FACILITIES:** Bike services Braai pods Lap pools Children's pool Children's play area Tennis court Elevated boardwalks The Forest Clubhouse features a furnished viewing deck, fire pit, yoga studio, and hammocks Elaleni Leisure Centre

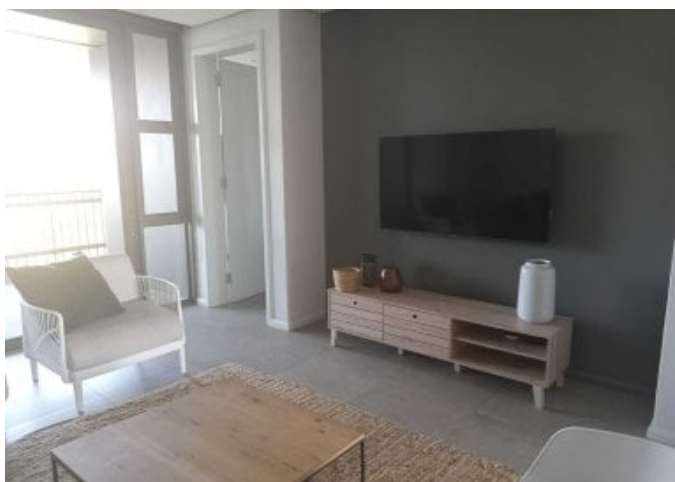
**AREA AMENITIES:** Tiffany's Shopping Centre Salt Rock Shopping Centre Sage Deli and Café The Litchi Orchard Sheffield Beach Salt Rock Main Beach Ballito Lifestyle Centre Ballito Junction Mall Alberlito Hospital Ashton International College Reddam House Crawford College Umhlali golf course Zimbali golf course King Shaka International Airport



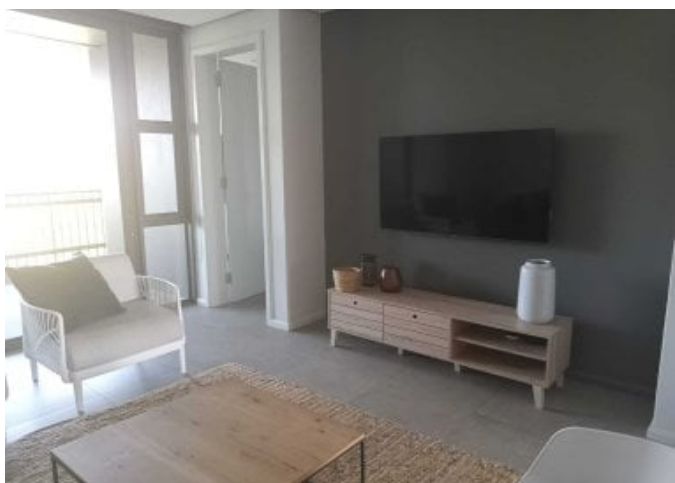
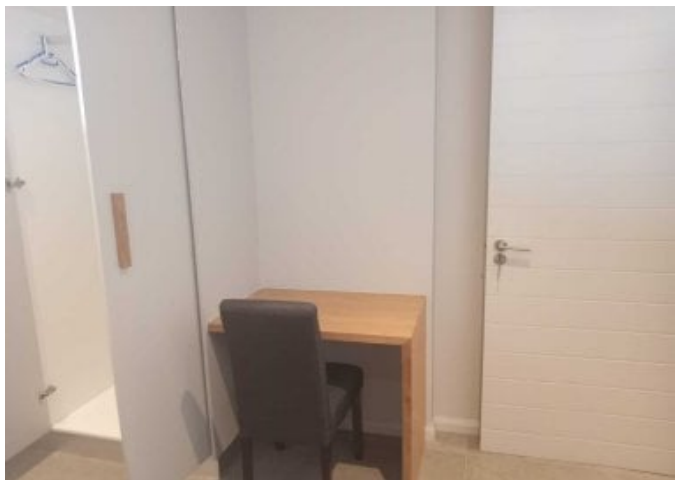








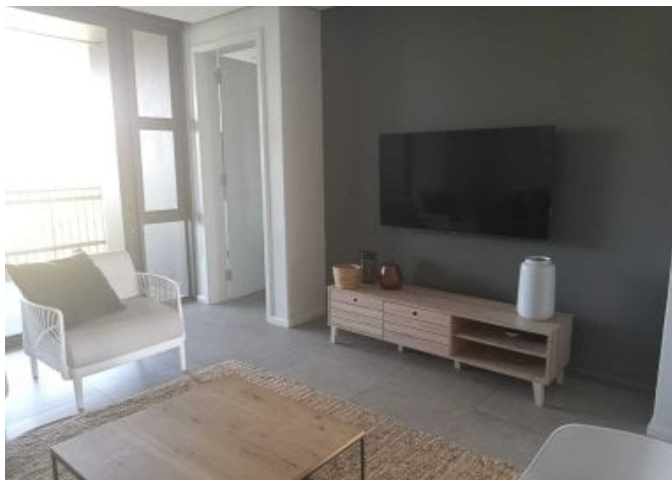


























# Floor plan



FEVER BLOCK - TYPICAL SECTION  
SCALE 1 : 200

FEVER UNITS - TYPICAL SECTION

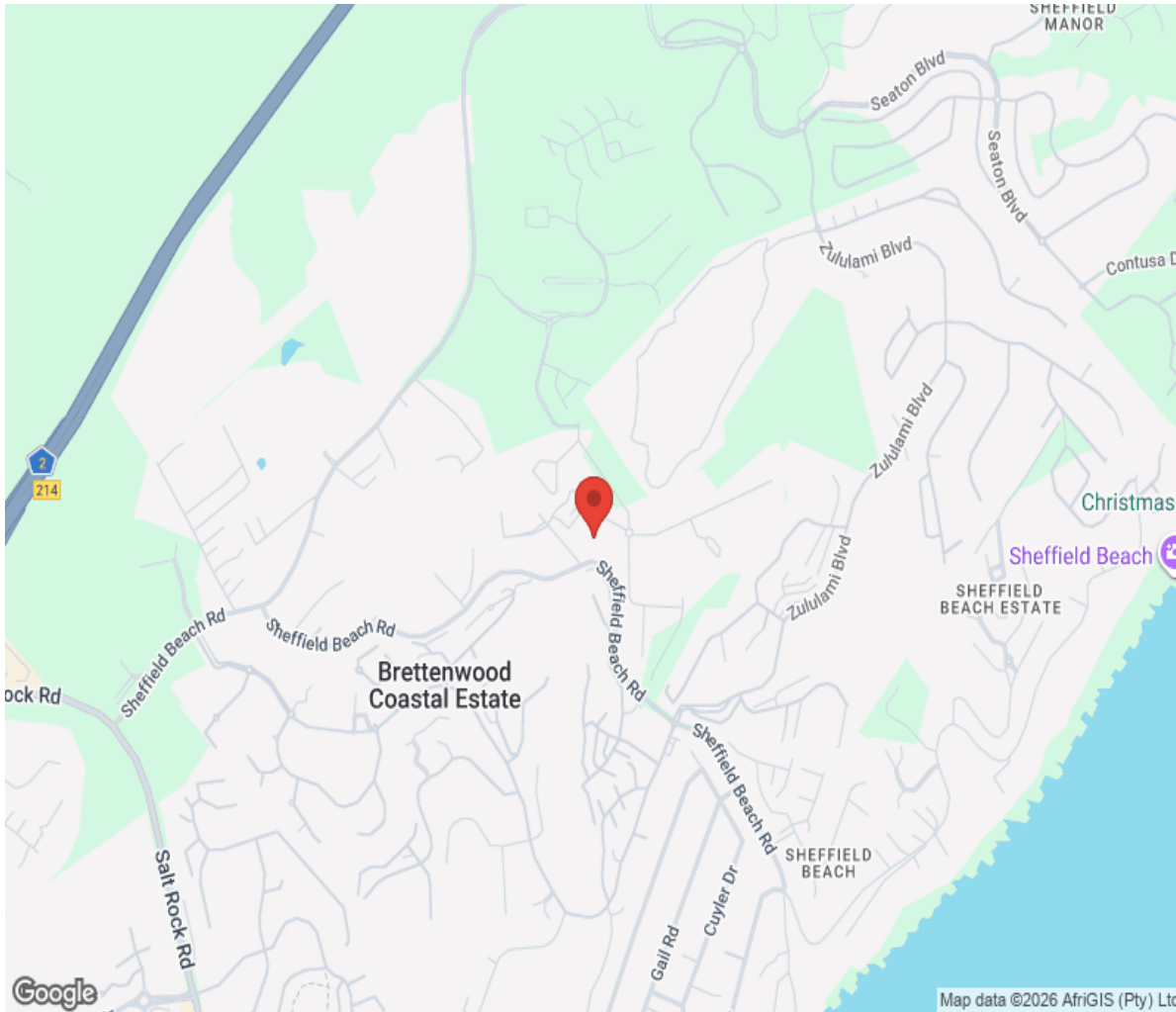
**bløc.**

1 / 208

JOB NO: 2018/01/13  
DATE: 20/05/18

# Location

---



# Hamptons

INTERNATIONAL

**+44 (0)20 8618 4551**

**[international@hamptons.co.uk](mailto:international@hamptons.co.uk)**

**[www.hamptons-international.com](http://www.hamptons-international.com)**