

# Hamptons

INTERNATIONAL



Hapi Photography

**689 Saddle Ridge, Crystal Lake, IL 60012**

5 🏠 4 🚗

**£480,000**

**(\$615,000)**

## Property details



### Key features

- **Garage Count: 2 Car Garage**
- **Sewer: Private**
- **Fireplace Count: 1 Fireplace**
- **Cooling: Central A/C**
- **Water: City Water**
- **Special Program: Global Luxury**

### Attributes

 **With land**

**689 Saddle Ridge, Crystal Lake, IL 60012**

5  4 

**£480,000**  
**(\$615,000)**

## Description

Welcome to this stunning 5-bedroom, 3.1-bathroom Colonial masterpiece nestled in the highly sought-after Indian Hills Trails neighborhood of Crystal Lake. Seller is offering a home warranty on this home with its thoughtfully designed layout and exquisite finishes throughout -- a harmonious blend of comfort and elegance. The main level boasts gleaming hardwood floors that lead you through sunlit spaces, complemented by plush carpeting in the inviting living and dining rooms. The gourmet kitchen is a chef's delight, featuring granite countertops, ample wood cabinetry, and a seamless flow for both everyday living and entertaining. The family room is the heart of the home, offering a cozy atmosphere with a dual wood and gas-burning fireplace-perfect for chilly evenings. Head downstairs to the expansive walkout basement, where you'll find an additional bedroom and a full bath complete with a sauna, creating the ultimate relaxation retreat. Outside to your private backyard oasis on a spacious 0.60-acre lot. Entertain effortlessly on the upper deck that flows into a lower deck and a cement patio-ideal for summer gatherings. This home offers a seamless blend of indoor and outdoor living, all within close proximity to Veterans Acres, the Metra, and the charming shops and restaurants in downtown Crystal Lake. Don't miss the opportunity to make this exceptional home your own. Schedule your private tour today and experience a lifestyle that is truly unmatched!





Hapi Photogra





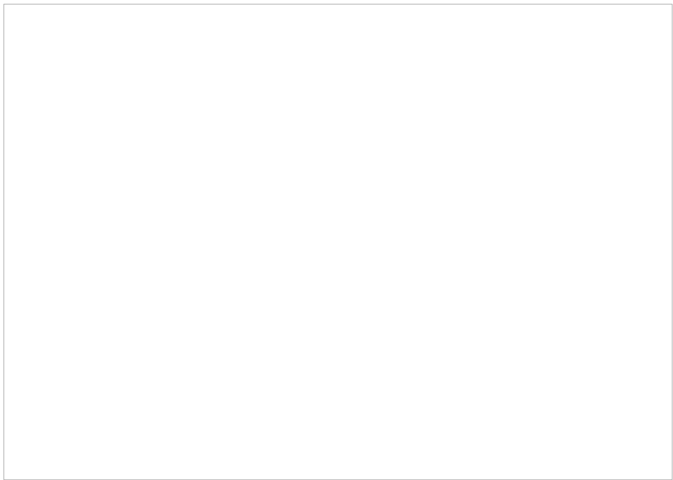








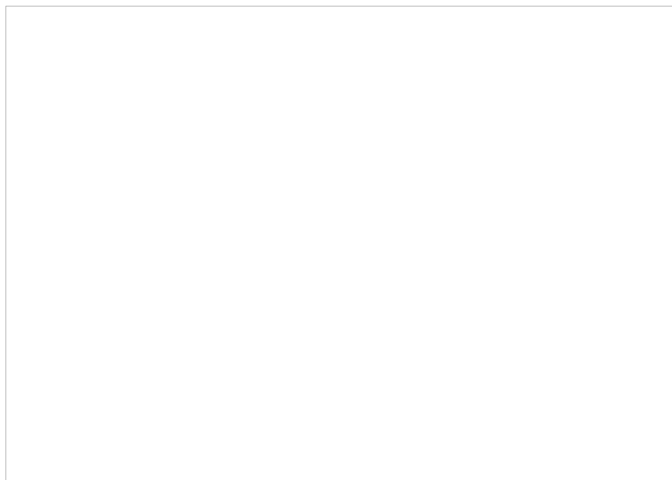
Hapi Photogra













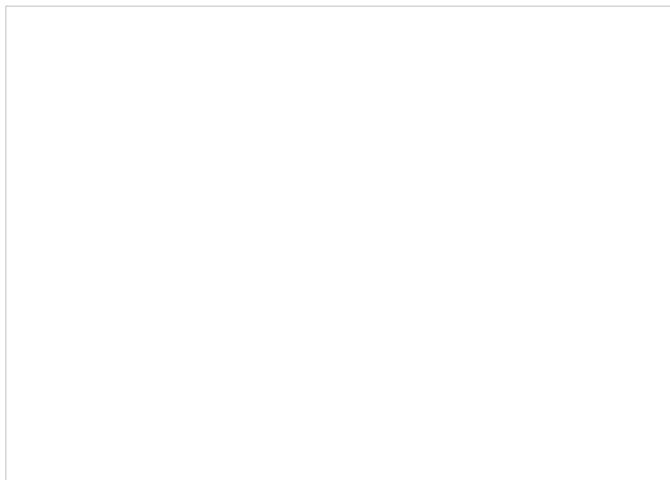








Hapr Photogra



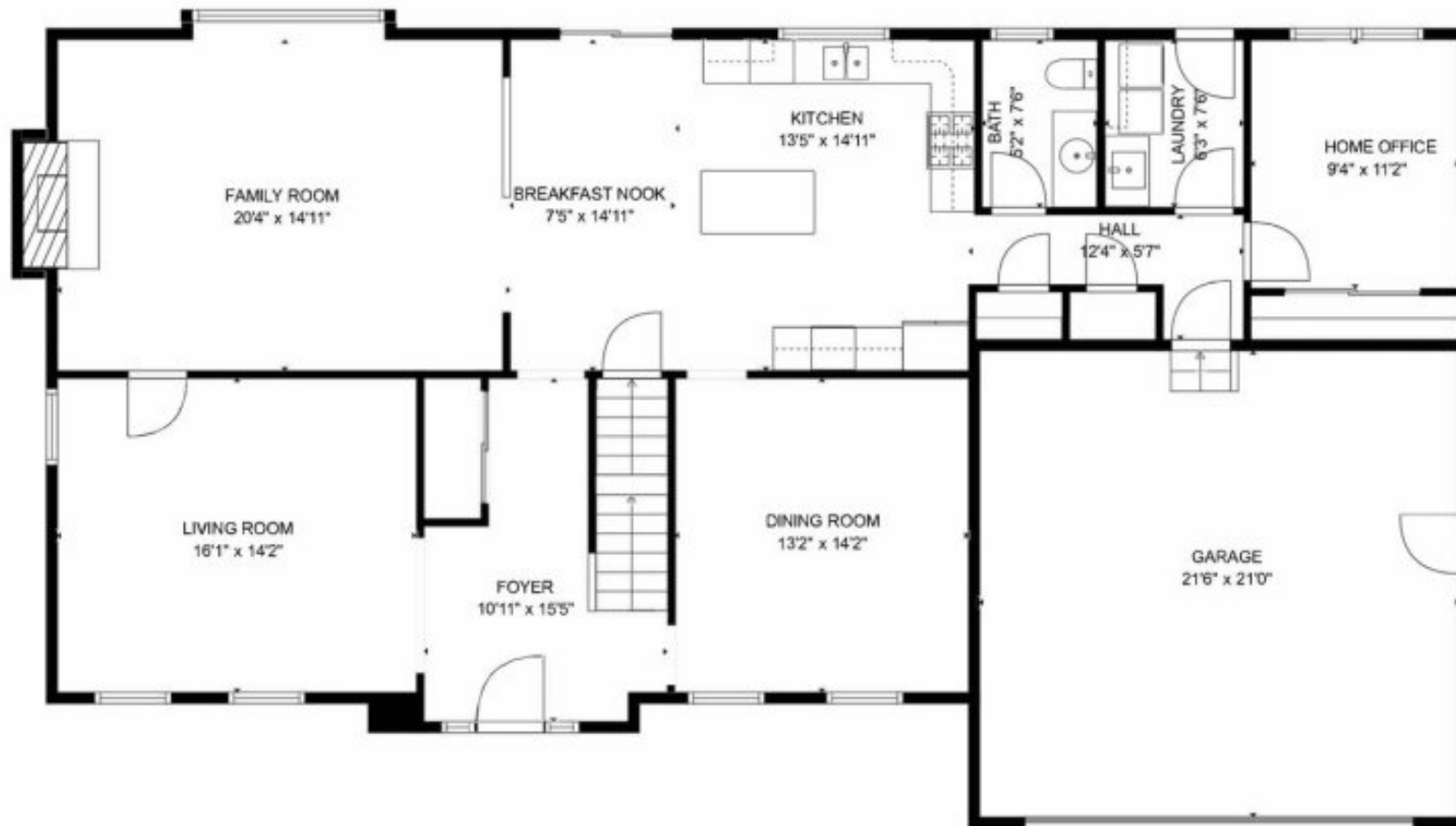






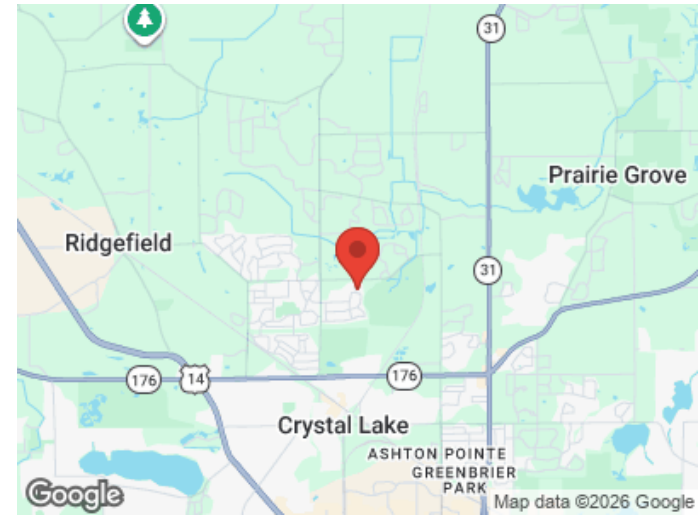
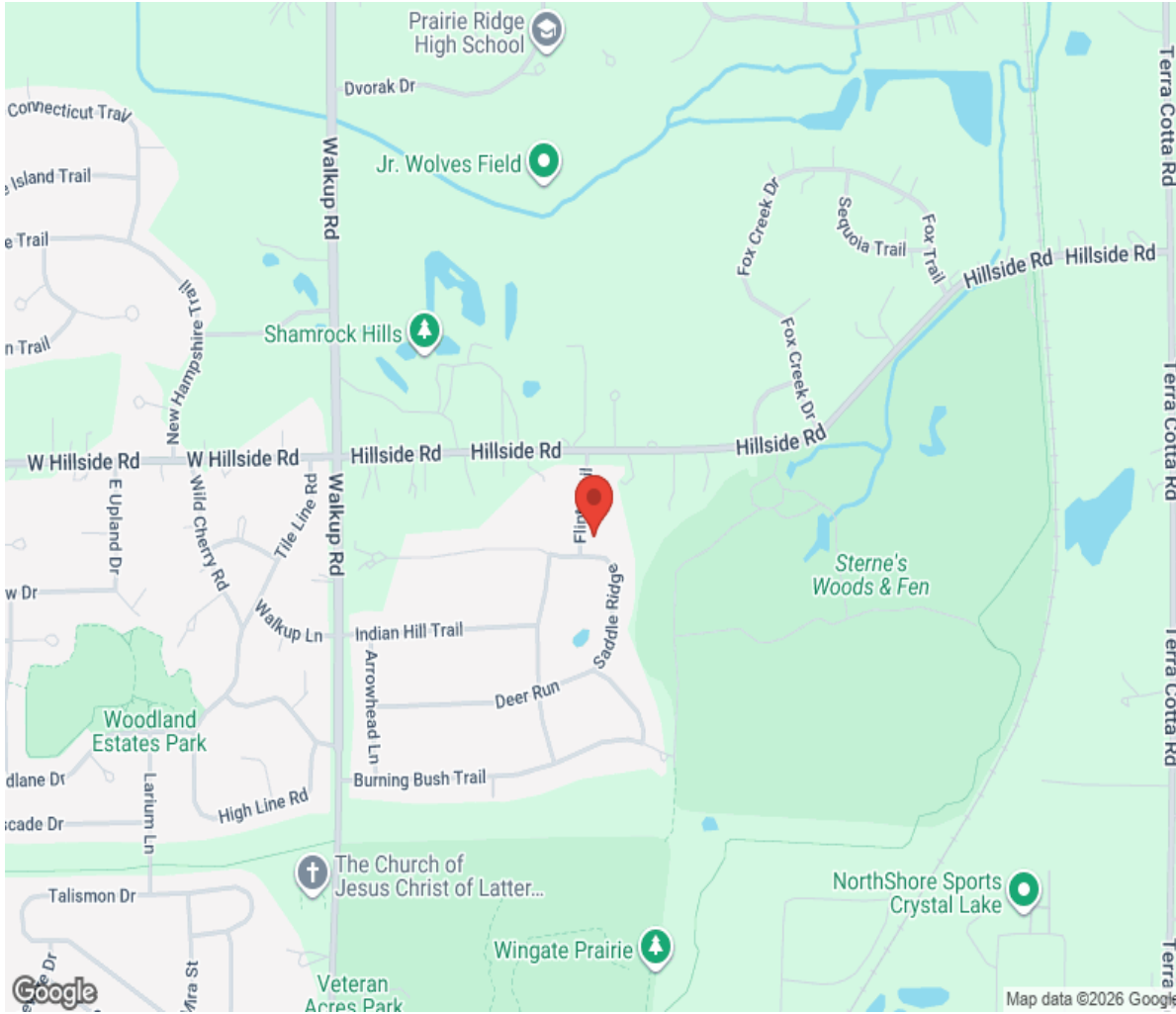


689 Saddle Ridge, Crystal Lake, IL 60012



GROSS INTERNAL AREA  
FLOOR 1: 1172 SQ FT, FLOOR 2: 1518 SQ FT, FLOOR 3: 1218 SQ FT  
EXCLUDED AREAS: STORAGE: 143 SQ FT, ELECTRICAL ROOM: 121 SQ FT, GARAGE: 452 SQ FT  
TOTAL: 3908 SQ FT

# Location



# Hamptons

INTERNATIONAL

**+44 (0)20 8618 4551**

**[international@hamptons.co.uk](mailto:international@hamptons.co.uk)**

**[www.hamptons-international.com](http://www.hamptons-international.com)**