

Hamptons

INTERNATIONAL



482 Shelbourne Dr, Plum, PA 15239

4  4 

£360,000

(\$459,000)

Property details



Key features

- **Cooling: Central A/C**
- **Fireplace Count: 1 Fireplace**
- **Heating Type: Forced Air**
- **Sewer: Public**
- **Water: City Water**

482 Shelbourne Dr, Plum, PA 15239

4 🏠 4 🚗

£360,000
(\$459,000)

Description

Welcome to 482 Shelbourne Dr, a stunning home in the sought-after Edgемеade community of PLUM. This vibrant home is overflowing with positive energy and boasts numerous tasteful upgrades. Upon entering, you'll find a grand two-story foyer, fresh paint, modern fixtures, and updated flooring and carpets throughout. The spacious kitchen opens to the family room, featuring white cabinets, granite countertops, two pantries, and stainless-steel appliances. Off the kitchen, a huge deck offers a tranquil view of the meticulously landscaped backyard, perfect for entertaining with its grill gas hookup and speakers. Upstairs, the owner's suite impresses with cathedral ceilings, two walk-in closets, and an ensuite bath. Three additional large bedrooms and a hallway bath complete the upper level. The finished walk-out basement includes a bath and rough-ins for a wet bar, providing endless entertainment potential. This home is a gem in a prime location-make it yours!











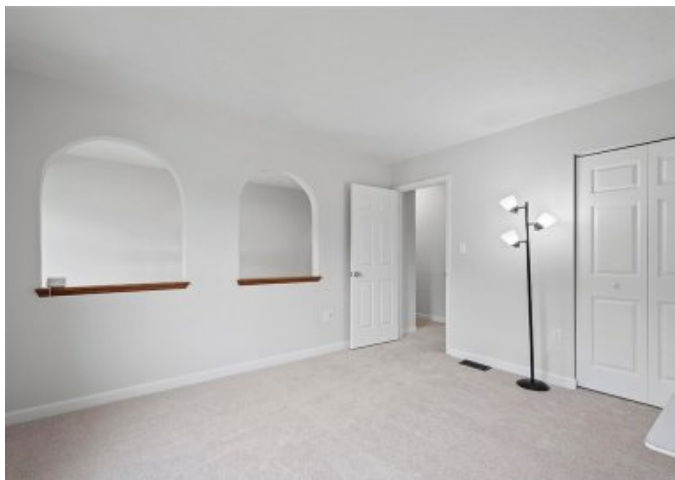


























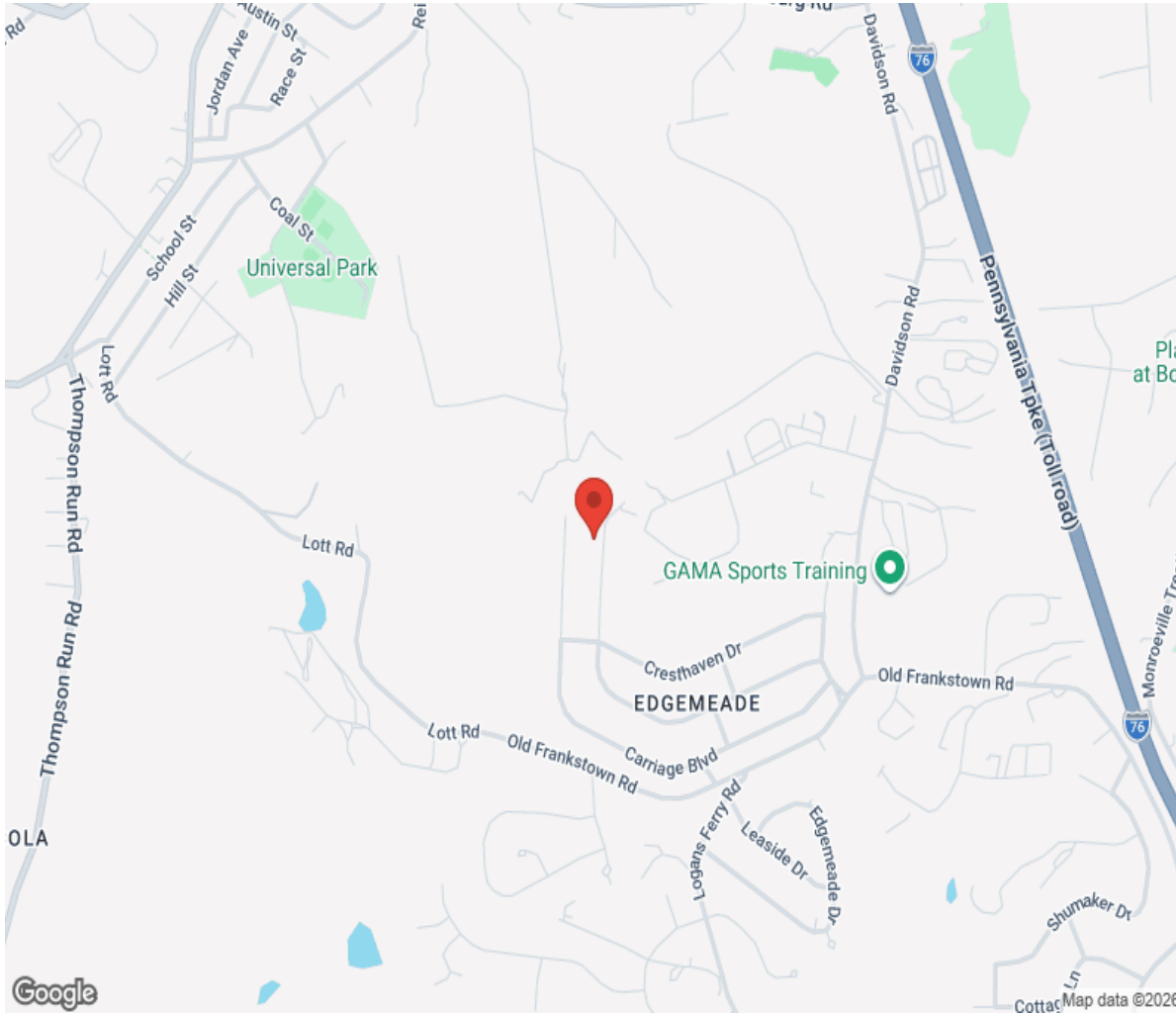








Location



Hamptons

INTERNATIONAL

+44 (0)20 8618 4551

international@hamptons.co.uk

www.hamptons-international.com