

Hamptons

INTERNATIONAL



THE
Mls.com

1129 Tower Rd, Beverly Hills, CA 90210

7  14 

£46,820,000

(\$60,000,000)




Property details



Key features

- **Cooling: Central A/C**
- **Fireplace Count: 4+ Fireplaces**
- **Garage Count: 5 + Car Garage**
- **Pool Description: Pool**
- **Sewer: Public**
- **Special Program: Global Luxury**

Attributes

-  **Swimming pool**
-  **Garage**
-  **Gym**

1129 Tower Rd, Beverly Hills, CA 90210

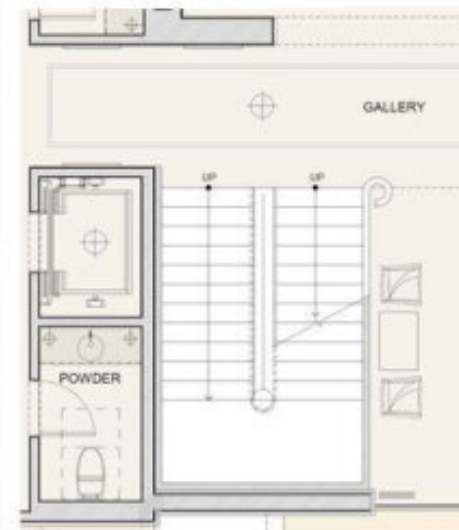
£46,820,000
(\$60,000,000)

7 🏠 14 📄

Description

Nestled in the heart of prime Beverly Hills, this exceptional estate offers the rare opportunity for a fortunate buyer to personalize a magnificent home. Spanning apx. 15,000 sq. ft. on a sprawling apx. 1.35-acre lot, this Contemporary estate is designed by renowned architect Richard Landry, known for his timeless and luxurious creations. Enter the estate through private gates and up a long winding, private driveway to a spacious motor court. The home is in the final stages of construction, with plans and permits fully approved and major structural elements already completed. The framing, facade, floor plan, walls, windows, electrical, and plumbing are all in place - leaving the exciting opportunity for the buyer to select their own finishes. The striking facade features walls of glass and exquisite split-faced travertine quarried and cut in Italy, including silver travertine accents, setting the tone for a sophisticated and modern design. Upon entry, a grand two-story foyer welcomes you with soaring ceilings and walls of glass throughout the home, providing seamless access to the outdoor spaces and stunning head-on views that span from the city to the ocean and beyond. The main level offers expansive living areas, including a grand great room with a fireplace, a media room, and a library with fireplace. There are also four powder rooms, a large office with an en-suite bathroom, and both a chef's prep kitchen and a family kitchen with adjoining breakfast area and family room with fireplace. The main level's exterior space is equally impressive, featuring a large covered loggia with a fireplace, an expansive game and bar area, and a spectacular infinity pool and spa, perfect for entertaining or relaxing while enjoying the panoramic views. Ascend or descend the grand staircase or take the elevator to all three floors. The upper level of the home features four bedrooms each with en-suite bathrooms, including the primary suite complete with sitting room with fireplace, dual bathrooms, enormous walk-in closets, and a private terrace. A large gym with an en-suite bath offers flexibility as an additional bedroom or office. The lower level is designed for ultimate entertainment and relaxation, with a vast playroom, a wine room, and a spa complete with a lounge area, treatment room, steam room, and sauna. The lower level also houses a staff lounge with an en-suite bathroom, a laundry room, mechanical rooms, ample storage space, and a massive garage with space for at least eight cars. For added privacy and convenience, there is a detached guest house featuring a three-car garage on the lower level and a spacious upper-level bedroom and bathroom with its own private terrace. Adjacent to the guest house, a sport court offers an additional amenity for active living. This is a once-in-a-lifetime opportunity to finish crafting your dream home in one of Los Angeles' most desirable locations. With its prime Beverly Hills address, stunning architectural design, and unparalleled views, this estate represents the epitome of luxury living.













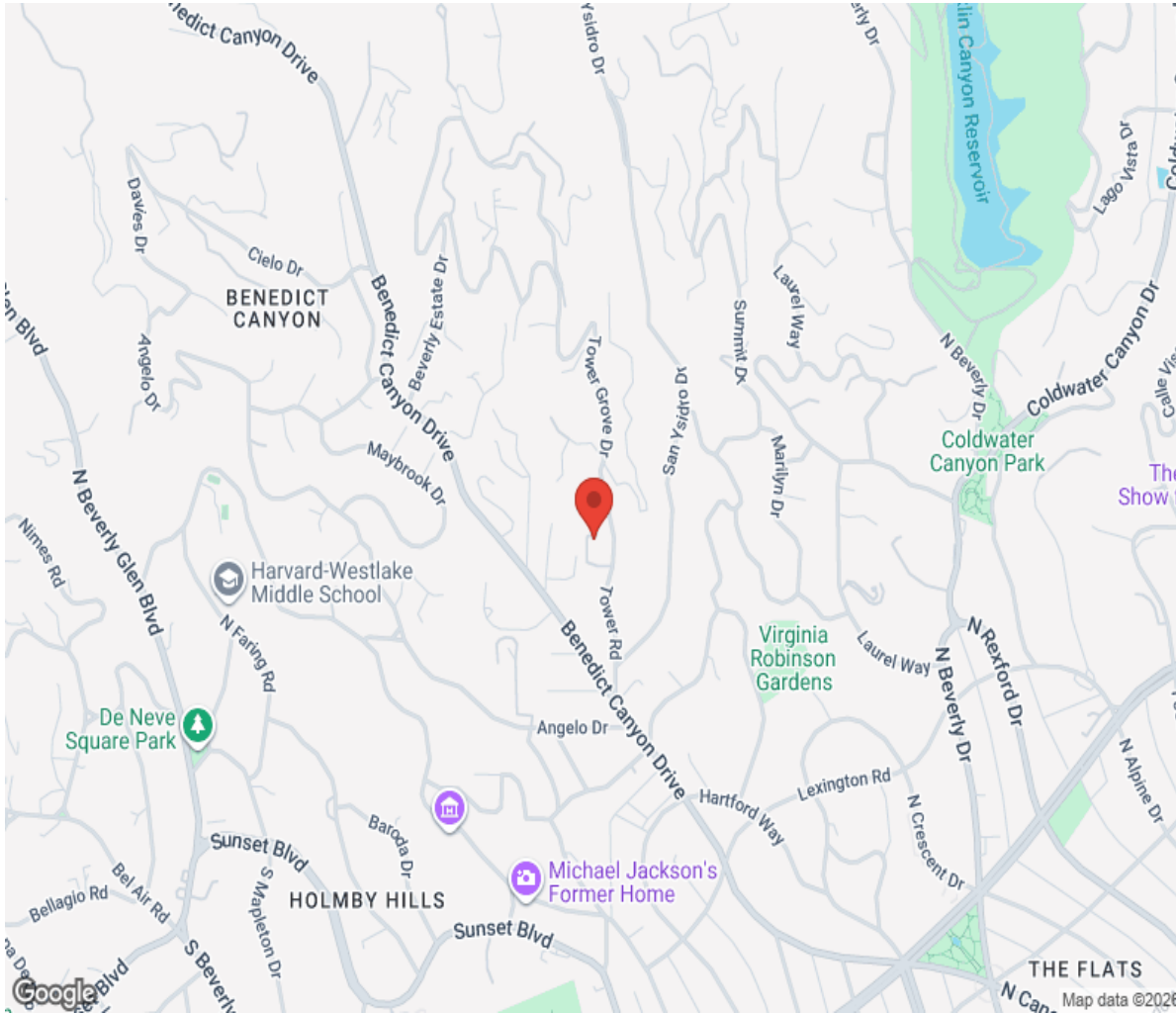
CONCRETE RESIDENCE - PLAY ROOM

BEVERLY HILLS, CA





Location



Hamptons

INTERNATIONAL

+44 (0)20 8618 4551

international@hamptons.co.uk

www.hamptons-international.com