

# Hamptons

INTERNATIONAL



DMLS

**4112 Rockingham Dr, Raleigh, NC 27609**

5 🏠 7 🚗

**£2,120,000**

**(\$2,850,000)**

## Property details



### Key features

- **Basement: Crawl Space**
- **Fireplace Count: 2 Fireplaces**
- **Garage Count: 3 Car Garage**
- **Sewer: Public**
- **Special Program: Global Luxury**
- **Age: New Construction**
- **Appliances: Refrigerator**
- **Flooring: Tile**
- **Interior: Wet Bar**
- **Flooring: Hardwood**

### Attributes

- 🏊 **Swimming pool**
- 🏠 **Garage**

**4112 Rockingham Dr, Raleigh, NC 27609**

**£2,120,000**  
**(\$2,850,000)**

5 🏠 7 🏠

## Description

Your Dream Home within Walking Distance to North Hills! Located on a pool-accommodating lot and built by Homestead Building Company. Featuring a 3-car garage with a courtyard entry for a grand first impression. The main floor showcases an exquisite gourmet kitchen with a 48" Thermador double-oven range, built-in refrigerator, and a discreet scullery with custom cabinetry. High-end quartz countertops and designer pendant lighting, creating a perfect blend of style and functionality. The expansive family dining space opens via a sliding glass door to a vaulted covered porch featuring an electronic Phantom screen system and a fireplace--ideal for seamless indoor-outdoor living. The family room boasts soaring ceilings with beam accents, a custom fireplace with built-ins, and a second slider leading to the porch. The primary suite exudes elegance with its dramatic vaulted ceiling, wide-plank hardwood floors, and a spa-inspired en suite. The en suite features a zero-entry wet area with a freestanding tub, dual shower heads, a built-in bench, and natural light streaming through thoughtfully placed windows. The walk-in closet offers a laundry connection for added convenience. A private study or guest suite with hardwood floors and an en suite bath completes the first floor, along with a stylish powder room. Upstairs, you'll find three generously sized bedrooms, each with its own private en suite. A HUGE recreation room with a wet bar and a separate vaulted pool table or craft space provides endless entertainment options. The second floor also includes a half bath and an expansive unfinished walk-in storage space. Every detail of this home has been meticulously designed to offer unparalleled luxury, convenience, and entertainment. Don't miss the chance to own this one-of-a-kind masterpiece!







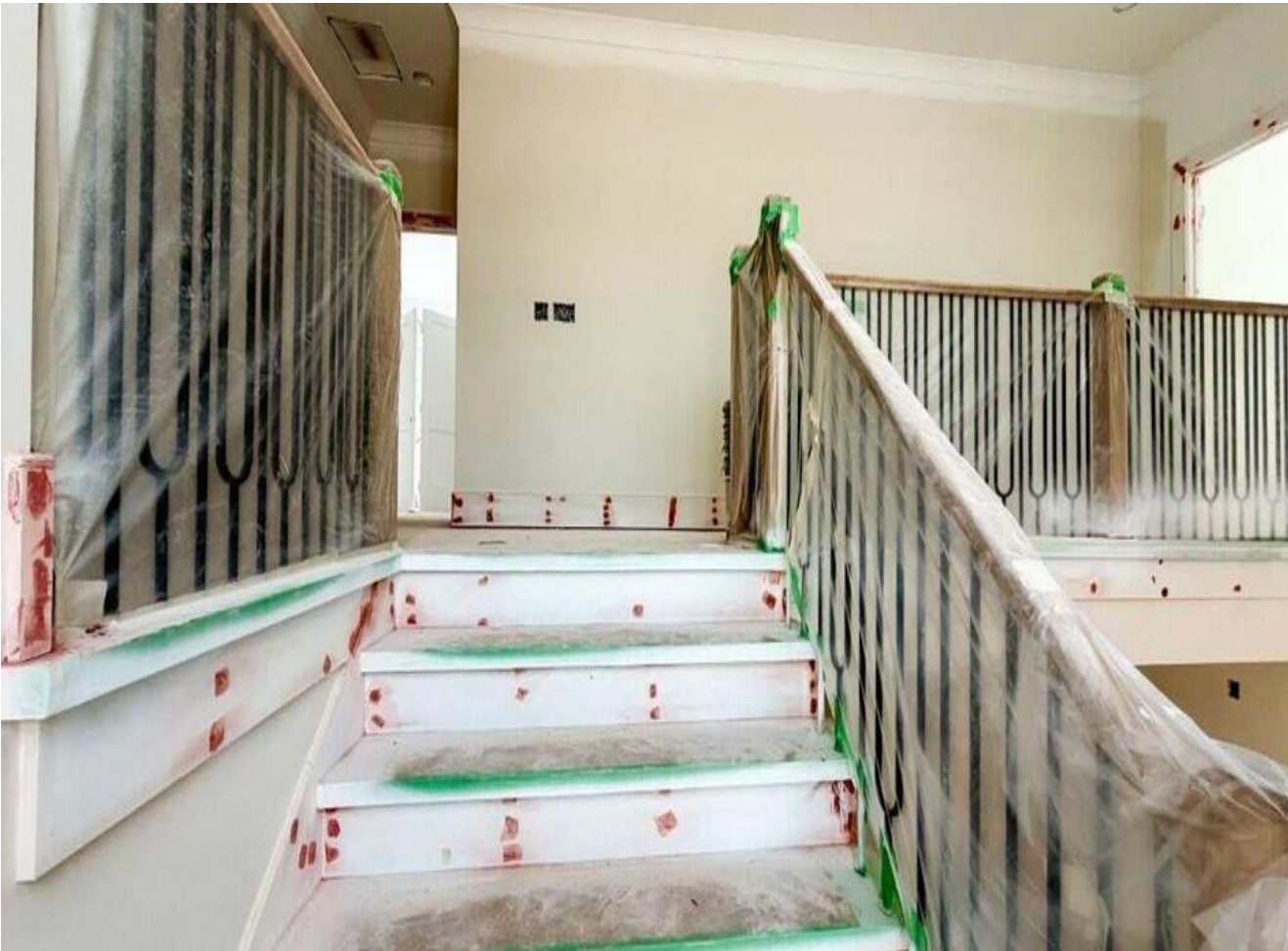
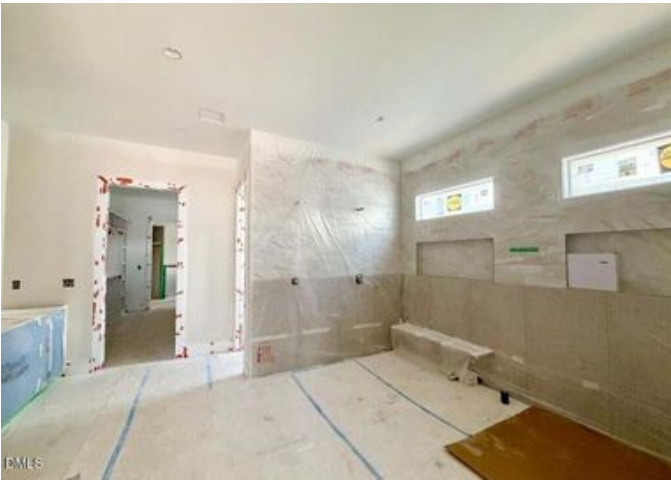


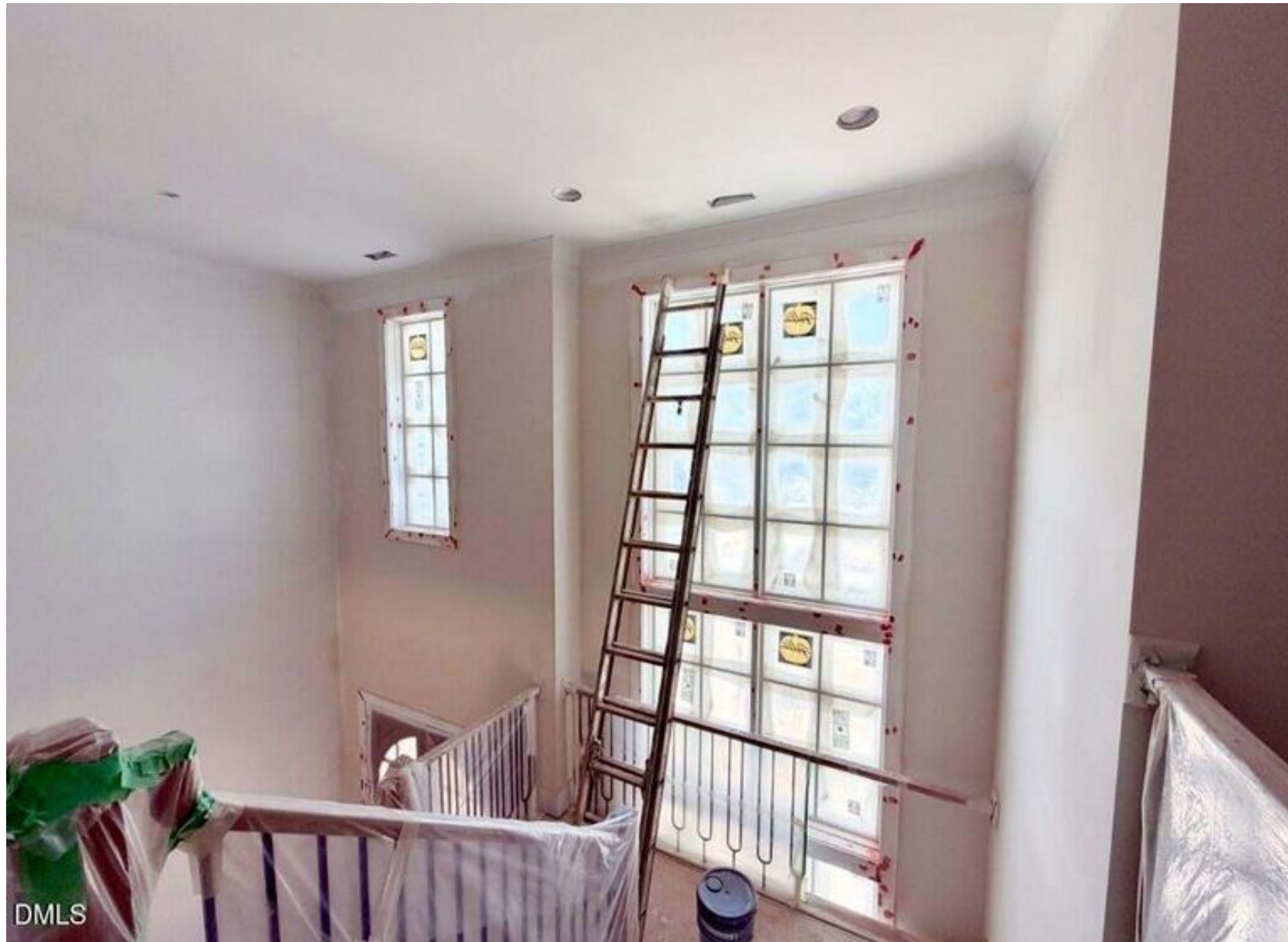
DMLS





DMLS





DMLS







































PAINTED SIDING  
WORLDLY GREY  
SW 7043

PAINTED BRICK  
ALABASTER  
SW 7008

PAINTED TRIM  
SW 7044 AMAZING GRAY

FRONT DOOR AND HEADERS  
MW403 SHIPBOARD MINWAX

WEATHERPOINT - WINTER POINT

*Warm tones and transitional lines*

DMLS Exterior Selections

**HOMESTEAD**  
BUILDING COMPANY

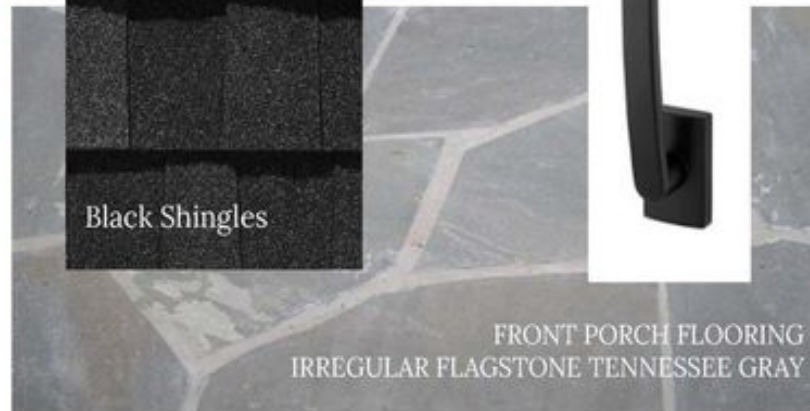
SIDING  
GREY

PAINTED BRICK  
ALABASTER  
SW 7008

PAINTED TRIM  
SW 7044 AMAZING GRAY

FRONT DOOR AND HEADERS  
MW403 SHIPBOARD MINWAX

HERPOINT - WINTER POINT



SOUTHWOOD DOOR - HI



or Selections

**112**  
 MODERN HOUSE  
 OIL RUBBED

**GARAGE DOOR SELECTION**  
 CHI Door - Stamped Shaker  
 Windows - Madison Long Above  
 Finish - Bronze

PAINTED SIDING  
 WORLDLY GREY  
 SW 7043

SW 7044

FRONT DOOR  
 MVA403 SHIPB

WEATHERED

Madison - Long

EXTERIOR LANTERNS  
 VINTAGE BRONZE

selections

HOMES  
 BUILDING



**WALL COLOR**  
 Entire House

SW 7035  
 Aesthetic White

**ACCENT COLOR**  
 Powder Room, Mudroom

SW 9167  
 Earl Grey

**ACCENT COLOR**  
 Study, Primary Bath, Primary  
 Bedroom, Mudroom

SW 9167  
 Polished Concrete

**Interior Paint Colors**

**TRIM COLOR**

SW 7005  
*Pure White*

Robbins Nature's Canvas Gold  
 Barley and Hops 7 1/2" x 1/2"

1st Floor  
 Foyer  
 Powder Room  
 Coat Closets  
 Scullery/Pantry  
 Family Room  
 Kitchen  
 Dining Room  
 Halls

2nd Floor  
 Bedroom 3 and closet  
 Bedroom 4 and closet  
 Bedroom 5 and closet

Mudroom and closet  
 Primary Bedroom  
 and closet  
 Guest Suite and  
 closet

2nd Floor  
 Halls  
 Rec Room

1st Floor  
 None

2nd Floor  
 Bedroom 3 and closet  
 Bedroom 4 and closet  
 Bedroom 5 and closet

Dreamweaver Capri  
 Champagne Fizz



Stair Rail Detail







**Countertop and Riser**



**Polished Nickel and Ash Gray Finishes**



**Finish Matte  
Brown Sink**



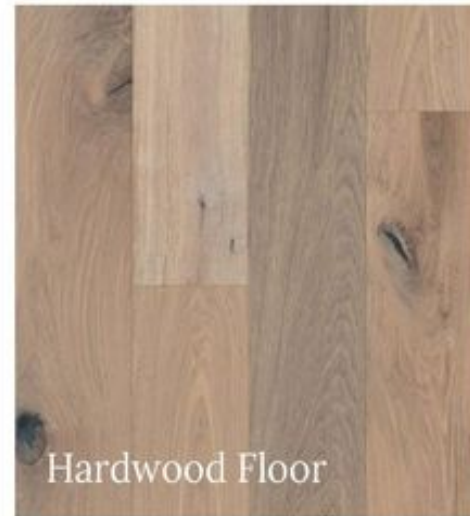
**Cabinet Finishes**



**Thermador Appliances**

Images are a representation of design intent only







Polished  
Chrome Finishes

Path 3

HOMESTEAD  
BUILDING COMPANY



**d**  
e Finishes

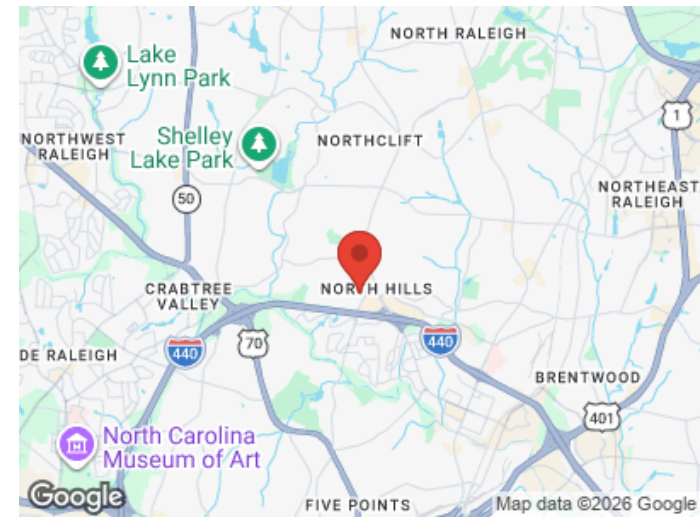
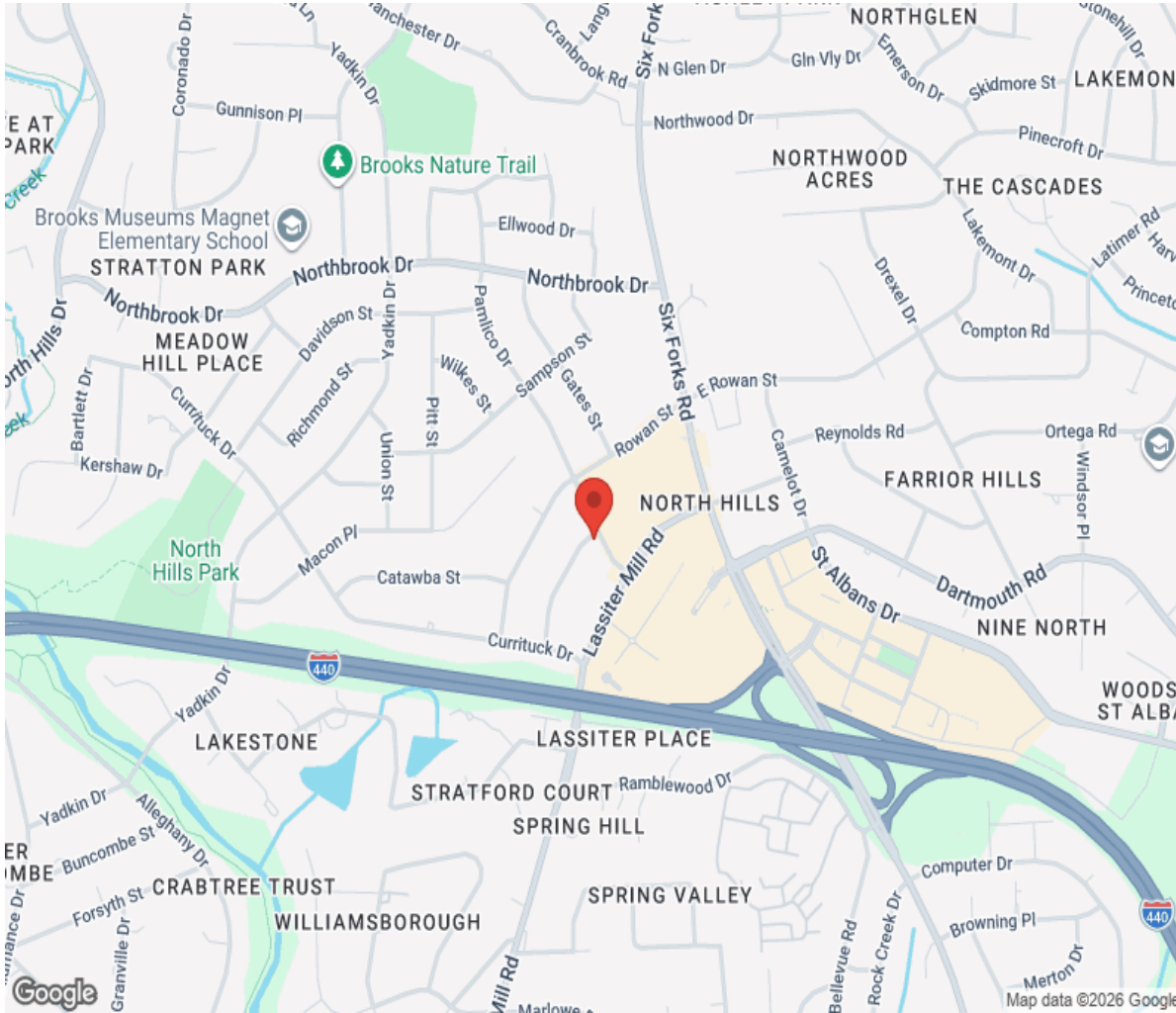
**Countertop**  
Calico White

**Wall Tile Pattern**  
Skin White and Sabbia

**Floor Tile**  
12x24 Canal Street Levee

**Cabinet Finishes**

# Location



# Hamptons

INTERNATIONAL

**+44 (0)20 8618 4551**

**[international@hamptons.co.uk](mailto:international@hamptons.co.uk)**

**[www.hamptons-international.com](http://www.hamptons-international.com)**