

# Hamptons

INTERNATIONAL



**2313 Therese Dr, Waco, TX 76712**

4 🏠 3 🚗

**£430,000**

**(\$550,000)**

## Property details



### Key features

- **Basement: None**
- **Garage Count: 2 Car Garage**
- **Garage Description: Garage**
- **Special Program: Global Luxury**

### Attributes

↗ **Gym**

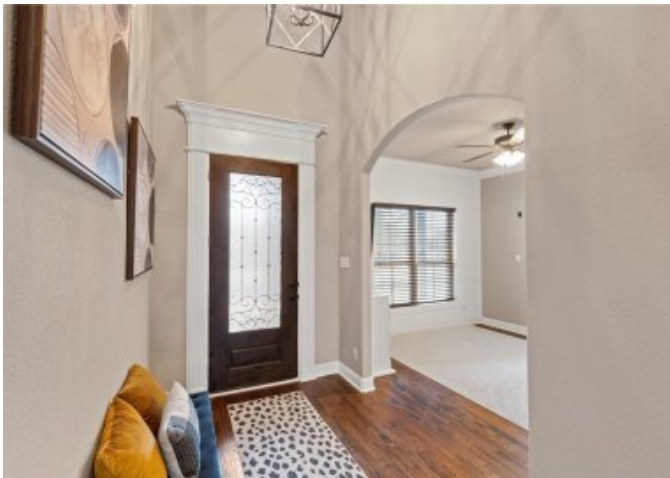
**2313 Therese Dr, Waco, TX 76712**

4 🏠 3 🚗

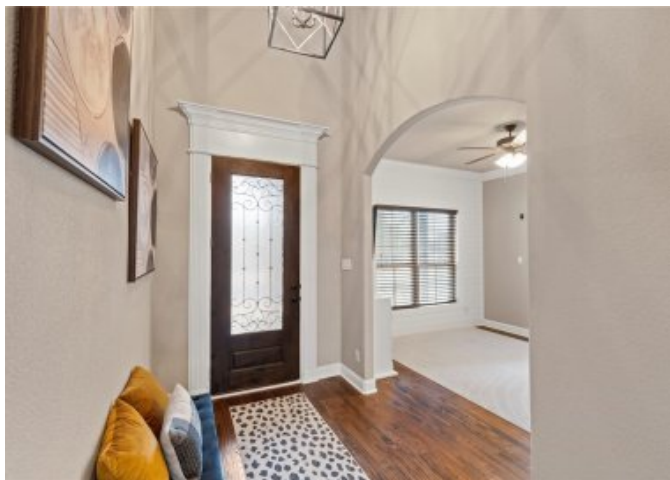
**£430,000**  
**(\$550,000)**

## Description

Nestled into the serene cul-de-sac of one of Midway ISD's most sought-after neighborhoods, this elegant 4-bedroom, 3-bathroom home epitomizes luxury and tranquility. Step into 2313 Therese, where vaulted ceilings and real wood floors greet you with a sense of grandeur and space. The formal dining area, just off the entrance, sets the tone for elegant entertaining and luxurious living. The centerpiece of the living area is a spectacular grand fireplace, dramatized by its floor-to-ceiling stone design, offers both warmth and aesthetic beauty. A large eat-in kitchen, includes a breakfast bar and beautiful wood cabinetry. The isolated primary suite features tall ceilings that enhance its spacious feel. It offers a serene escape with ample natural light and a luxurious ensuite bath. A bonus room downstairs features an exterior door to a private outdoor sitting area. Complete with built-in bookshelves, this space could serve as a home office, gym, or game room. An additional bedroom and bathroom on the main floor offer flexibility for guests. Upstairs, two more bedrooms and a full bath complete the sleeping quarters, allowing for a comfortable and private living environment for all occupants. The exterior is just as impressive as the interior. The meticulously manicured yard offers seclusion and privacy, with no rear neighbors to disrupt your peace. You can entertain guests in style around the cozy fire pit and sitting area. With all new carpet in the bedrooms and fresh paint throughout, this home is move-in ready! Schedule your private showing today!







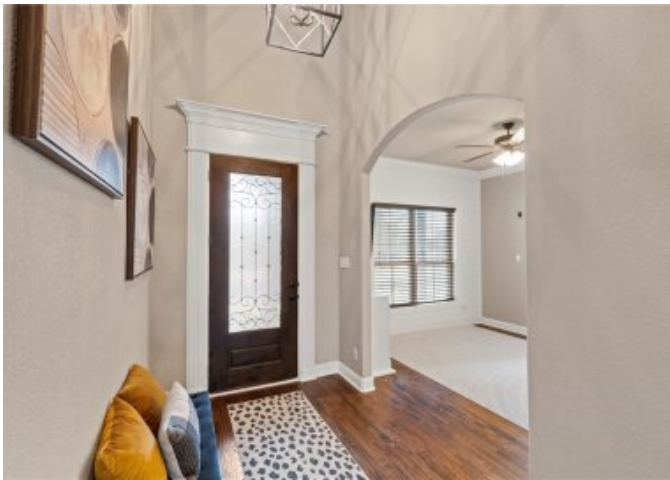




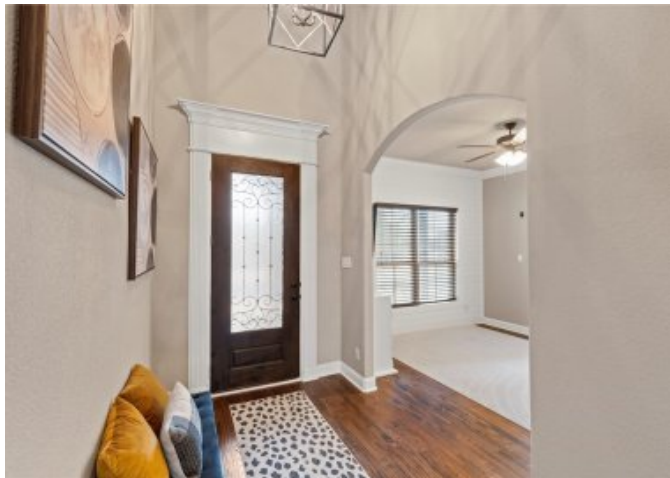




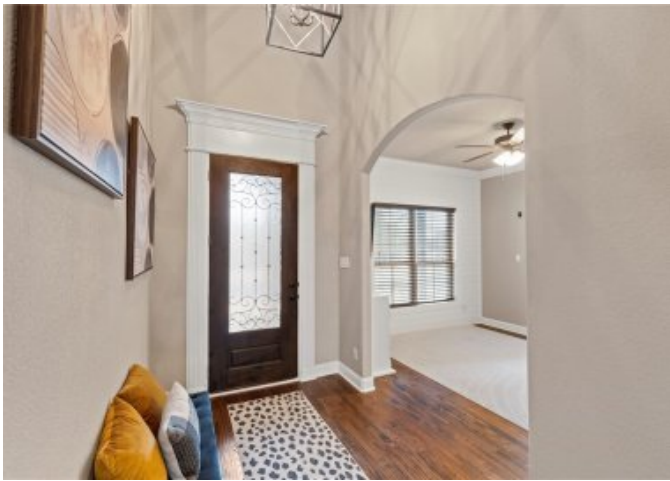




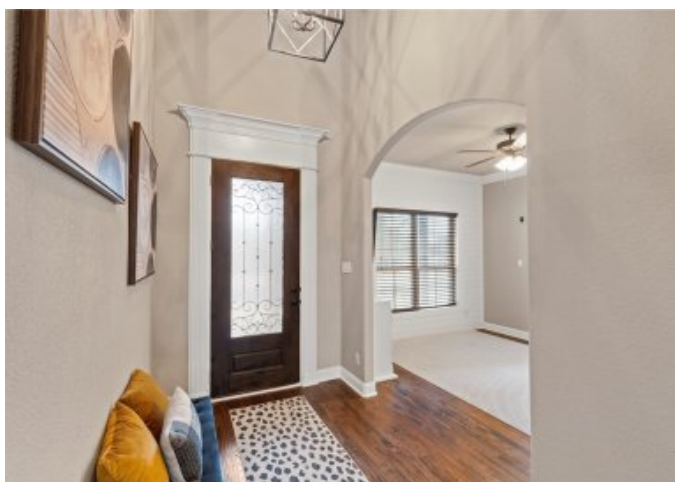
















FLOOR PLAN CREATED BY COMBOSHA WITH PHOTOGRAPHS TO DISPLAY PROPERTY. MEASUREMENTS MAY VARY SLIGHTLY.





# Location



# Hamptons

INTERNATIONAL

**+44 (0)20 8618 4551**

**[international@hamptons.co.uk](mailto:international@hamptons.co.uk)**

**[www.hamptons-international.com](http://www.hamptons-international.com)**