

# Hamptons

INTERNATIONAL



**615 Pearl St, Oceanside, NY 11572**

5 🏠 4 🚗

**£900,000**  
**(\$1,150,000)**

## Property details



### Key features

- **Appliances: Dishwasher**
- **Appliances: Dryer**
- **Appliances: Microwave**
- **Appliances: Refrigerator**
- **Appliances: Washer**
- **Cooling: Central A/C**
- **Exterior Description: Vinyl Siding**
- **Fencing: Partially Fenced**
- **Flooring: Hardwood**
- **Garage Count: 2 Car Garage**

### Attributes

- 🏠 **Garage**
- 🚗 **Refurbished**

**615 Pearl St, Oceanside, NY 11572**

5 🏠 4 🚗

**£900,000**  
**(\$1,150,000)**

## Description

Welcome to this Fabulous Waterview, Totally Renovated & Rebuilt in 2019 5/6 Bedroom, 2 Full and 2 Half Bathrooms FEMA Compliant Raised Contemporary Colonial Style Home. A Great Commuter Location just 2 Blocks from Long Island Rail Road. The features of this home include a Ground Floor Heated & Cooled 2 Car Garage with Epoxy Coated Floor, Tons of Storage, an Entrance Foyer with Stairs with Glass Railings leading to Main Level Expansive Open Concept Eat In Kitchen with White Cabinets, Quartz CounterTops, Stainless Steel Appliances and an Island and a Breakfast Bar Peninsula, a Pantry Closet, a Living Room and Dining Area. A Large Great Room with Fabulous Water Views, a Playroom/Office or 6th Bedroom and a Bathroom. Moving up to the Top Level we have a Primary Bedroom with a Private Bathroom with a Soaker Tub, Separate Shower and 2 sink Vanity and a Walk In Closet. 4 Large Bedrooms with Double Closets, a Full Bathroom, a Laundry Room and a Pull down Attic for storage. This Home also Boasts a Huge Grass Covered Yard with a Covered Patio and a Composite Deck overlooking Mill River. Gas Cooking & Gas Tankless Heating System, 200 Amp Electric Service, Central Air, Crown Moldings, New Engineered Hardwood Floors, Recessed Lighting, Large 5 Car Driveway & So Much More.



























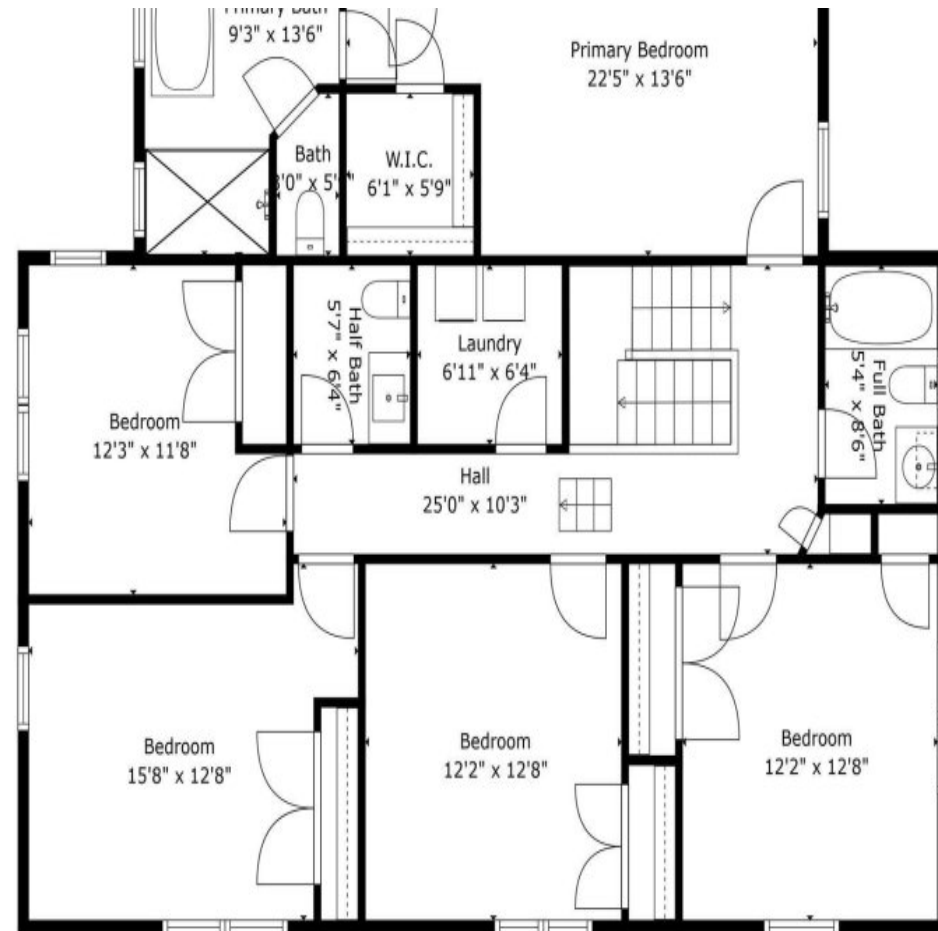


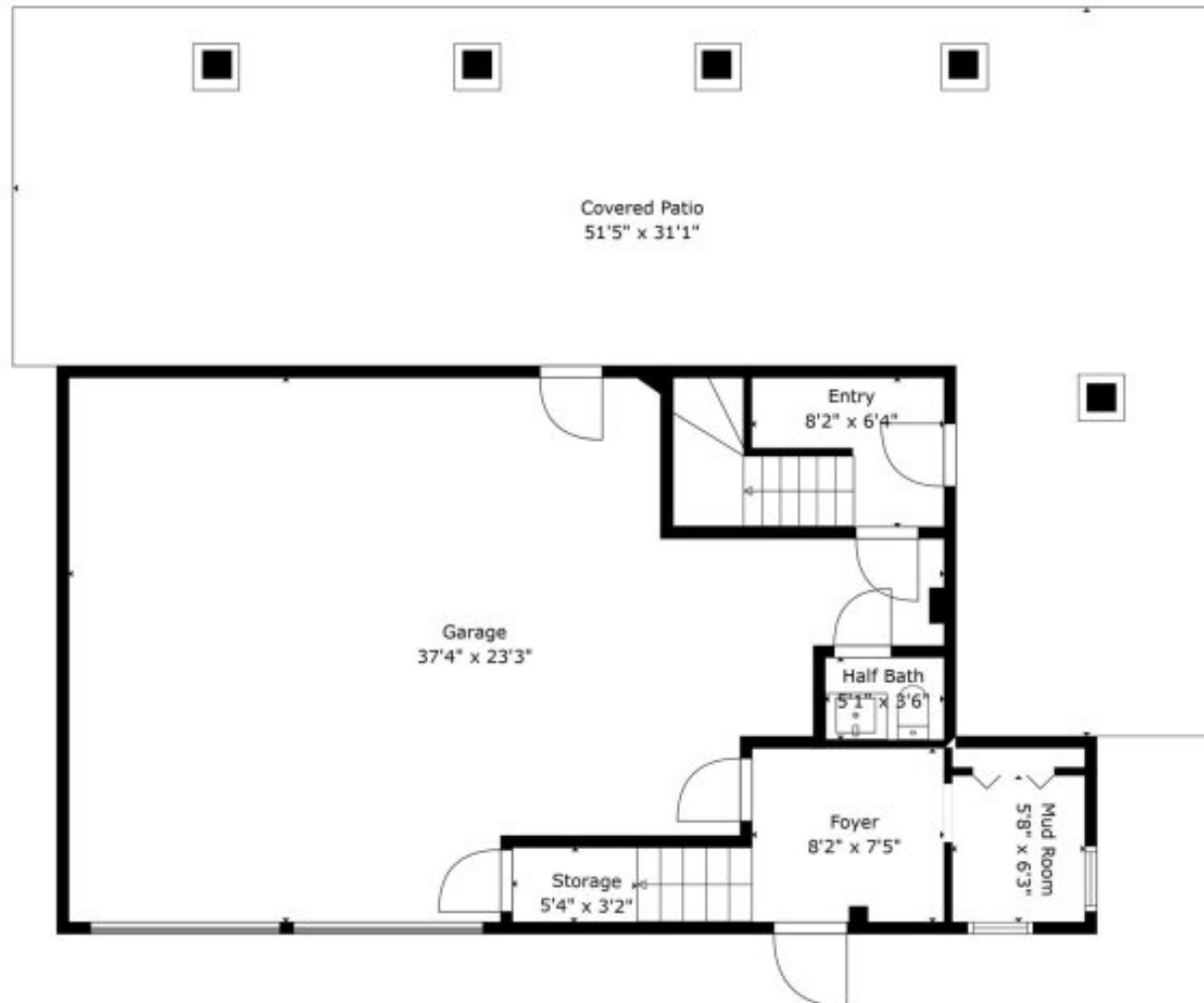








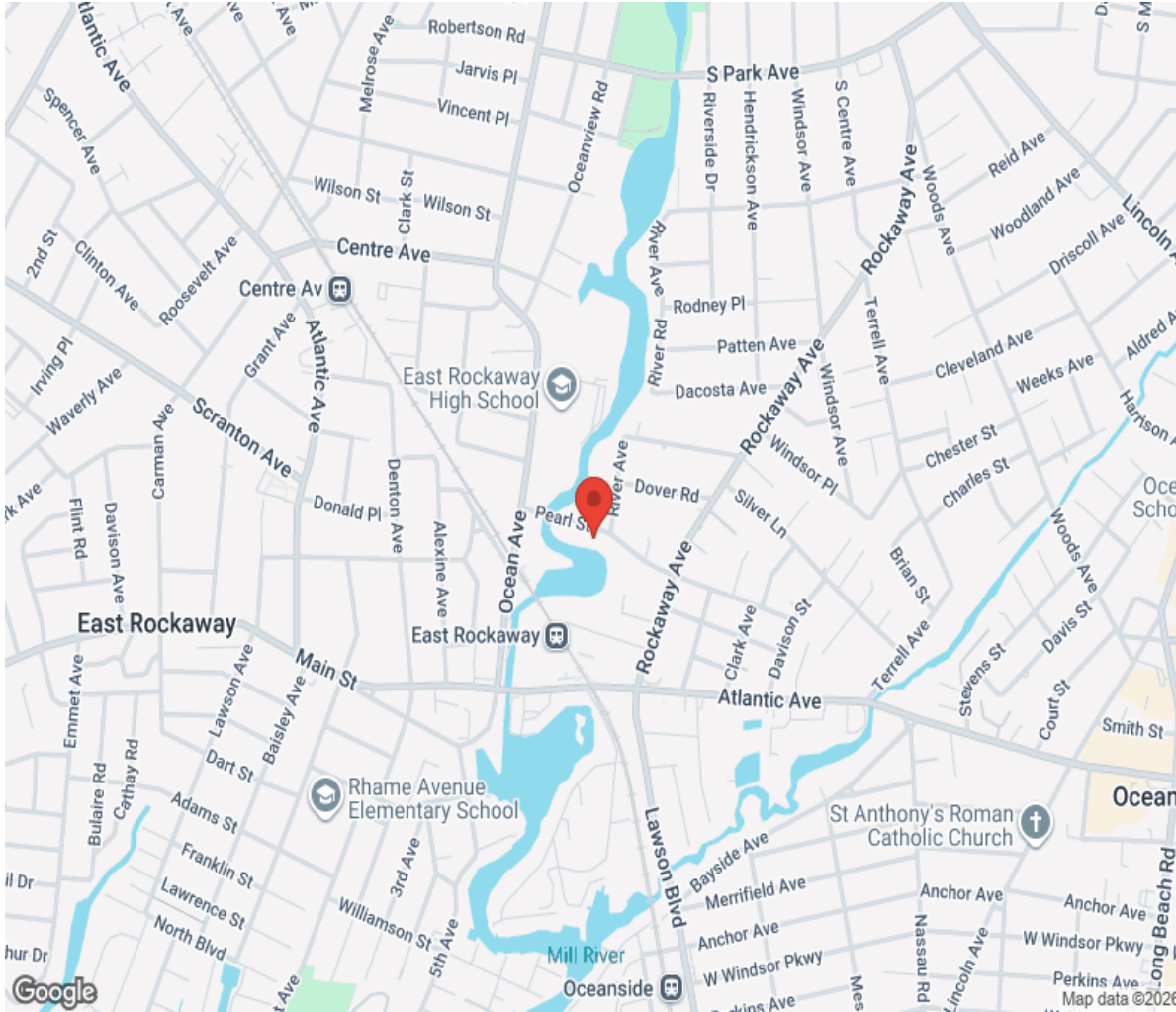




**TOTAL: 3112 sq. ft**  
FLOOR 1: 215 sq. ft, FLOOR 2: 1448 sq. ft, FLOOR 3: 1449 sq. ft, FLOOR 4: 0 sq. ft  
EXCLUDED AREAS: GARAGE: 655 sq. ft, STORAGE: 17 sq. ft, COVERED PATIO: 965 sq. ft,  
ATTIC: 1447 sq. ft

Floor Plan Created By Cubicasa App. Measurements Deemed Highly Reliable But Not Guaranteed.

# Location



**Hamptons**

INTERNATIONAL

**+44 (0)20 8618 4551**

**international@hamptons.co.uk**

**www.hamptons-international.com**