

Hamptons

INTERNATIONAL



Danvers Avenue London SW11

4  2  1 

£20,000

(£10,161)

Property details



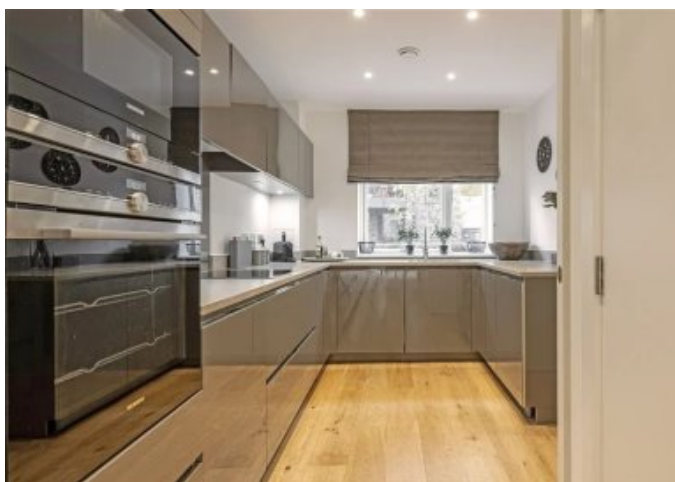
Danvers Avenue London SW11

4 🏠 2 🚗 1 📧

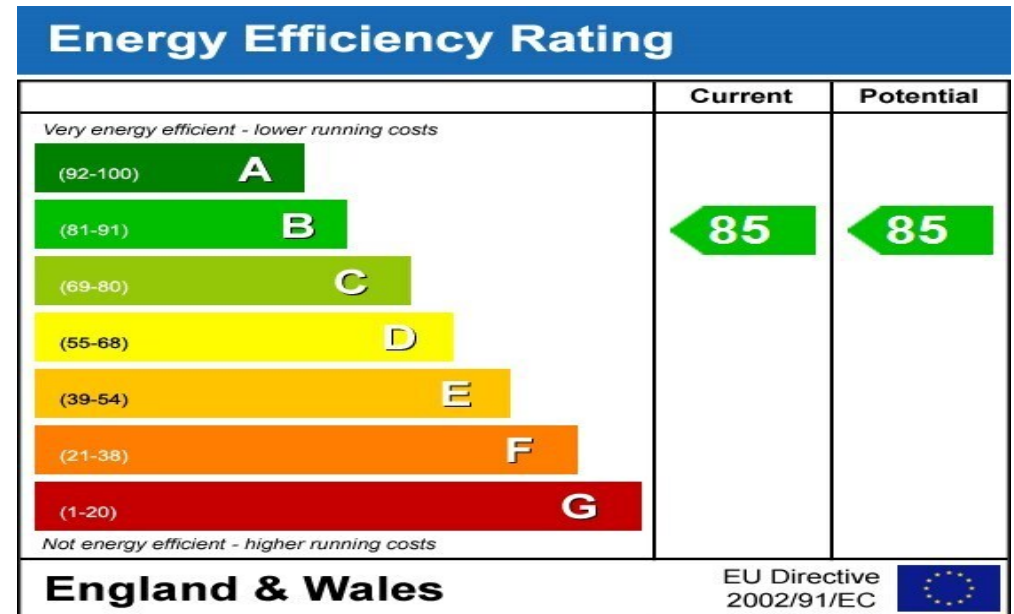
£20,000
(£10,161)

Description

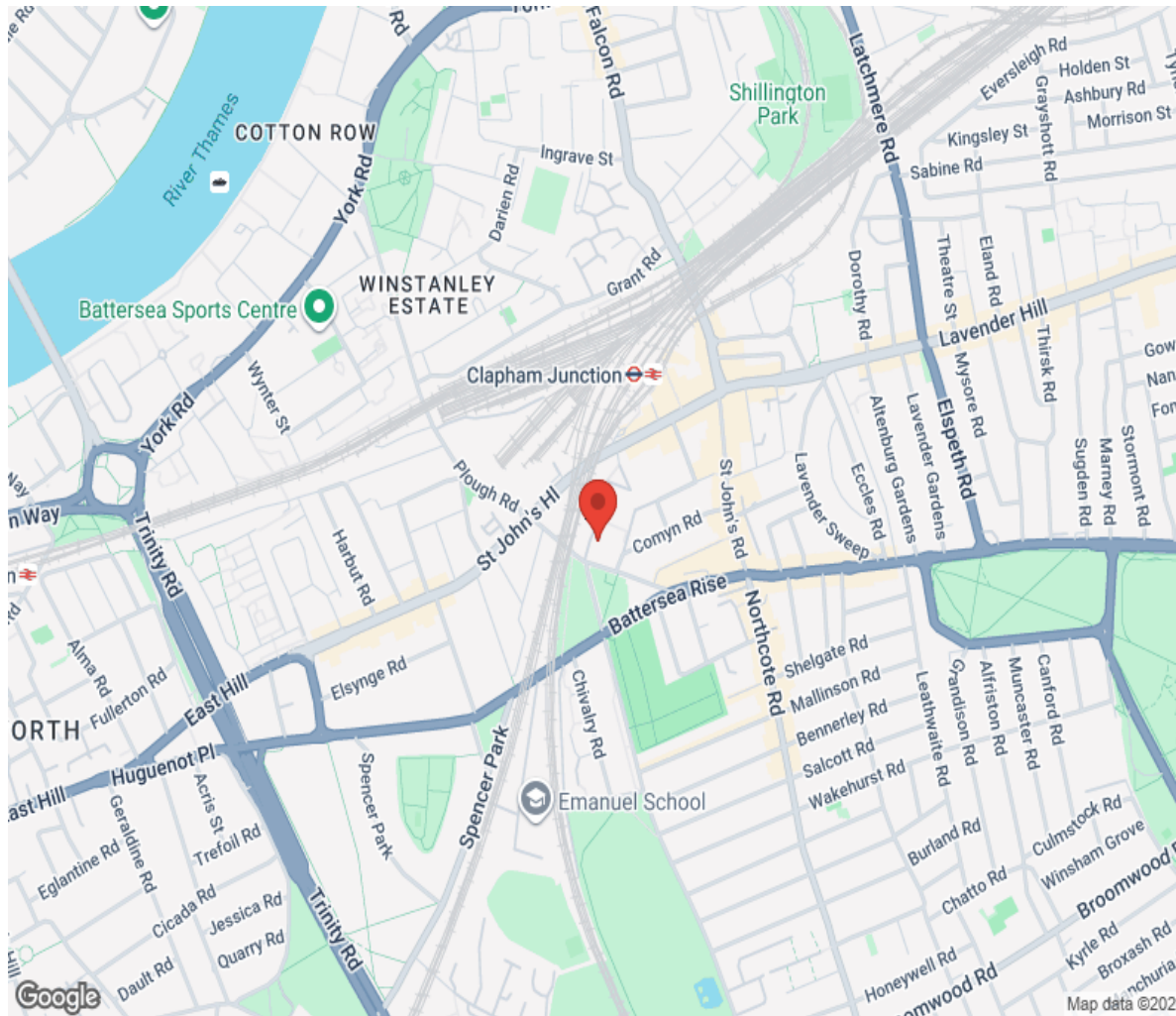
SHORT LET - A large four bedroom townhouse with a private entrance on ground level. Boasting a separate kitchen and dining area downstairs leading to outside terrace overlooking communal gardens and an upper level reception area with expansive living area, wall mounted flat screen TV. All of the interior designed apartments are fully stocked with everything needed to provide a home away from home, situated in a modern and secure development, with concierge on site, close to Clapham Junction station and Northcote Road which is lined with shops/restaurants/markets. Photos show examples of typical layout and design. Townhouses will vary. To check broadband and mobile phone coverage please visit Ofcom here ofcom.org.uk/phones-telecoms-and-internet/advice-for-consumers/advice/ofcom-checker Short Let Walking distance to Clapham Junction station Utility bills included Fast WIFI Underground parking at an additional price







Location



Hamptons

INTERNATIONAL

+44 (0)20 8618 4551

international@hamptons.co.uk

www.hamptons-international.com