

# Hamptons

INTERNATIONAL



**10 Woodfern Rd, Summit, NJ 07901**

3 1/2 2 1/2

**£780,000**

**(\$995,000)**

## Property details



### Key features

- **Fireplace Count: 1 Fireplace**
- **Garage Count: 2 Car Garage**
- **Heating - Fuel Type: Gas**
- **Sewer: Public**
- **Water: City Water**

### Attributes

- 🏠 **Garage**
- ↗ **Gym**

**10 Woodfern Rd, Summit, NJ 07901**

3 🏠 2 🚗

**£780,000**  
**(\$995,000)**

## Description

Welcome to 10 Woodfern Rd, a beautifully maintained 3-bedroom, 2-bathroom split-level home in one of Summit's most sought-after neighborhoods. Thoughtfully designed with sun-filled living spaces, gleaming hardwood floors, and a seamless layout, this home offers both charm and modern convenience. The spacious living room features a classic stone wood-burning fireplace, perfect for cozy evenings, and flows effortlessly into the formal dining room. The updated kitchen is a chef's dream with custom cabinetry, stainless steel appliances, granite countertops, and a charming breakfast nook. A classic 3 season sunroom overlooks the expansive backyard, providing a serene space to unwind or entertain. Upstairs, the primary suite boasts generous closet space and an en-suite bath, while two additional bedrooms offer flexibility. The finished lower level provides even more living space, ideal as a family room, home gym, or playroom, with direct access to the two-car garage. The expansive backyard is a private retreat, perfect for outdoor entertaining, playdates, or quiet mornings with coffee in hand. Located just minutes from Beacon Hill Club, Reeves-Reed Arboretum, the NJ Transit train, and Summit's award-winning downtown, this home is the perfect blend of comfort, convenience, and prime location. Bedroom 15 Feet x 11 Feet (11.0ft x 15.0ft) Bedroom 15 Feet x 11 Feet (11.0ft x 15.0ft) Bedroom 11 Feet x 10 Feet (10.0ft x 11.0ft) Dining Room 10 Feet x 11 Feet (11.0ft x 10.0ft) Kitchen 11 Feet x 11 Feet (11.0ft x 11.0ft) Living Room 20 Feet x 13 Feet (13.0ft x 20.0ft)





335405



















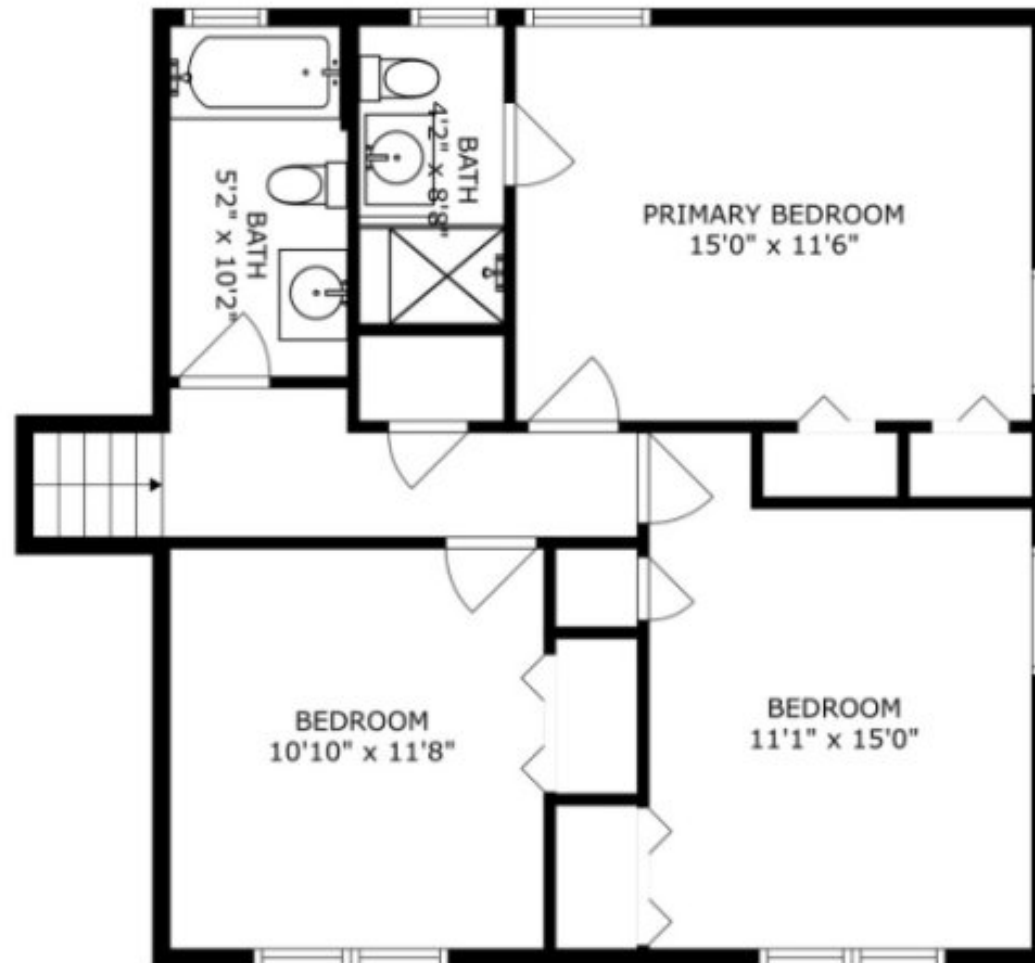
FLOOR 3



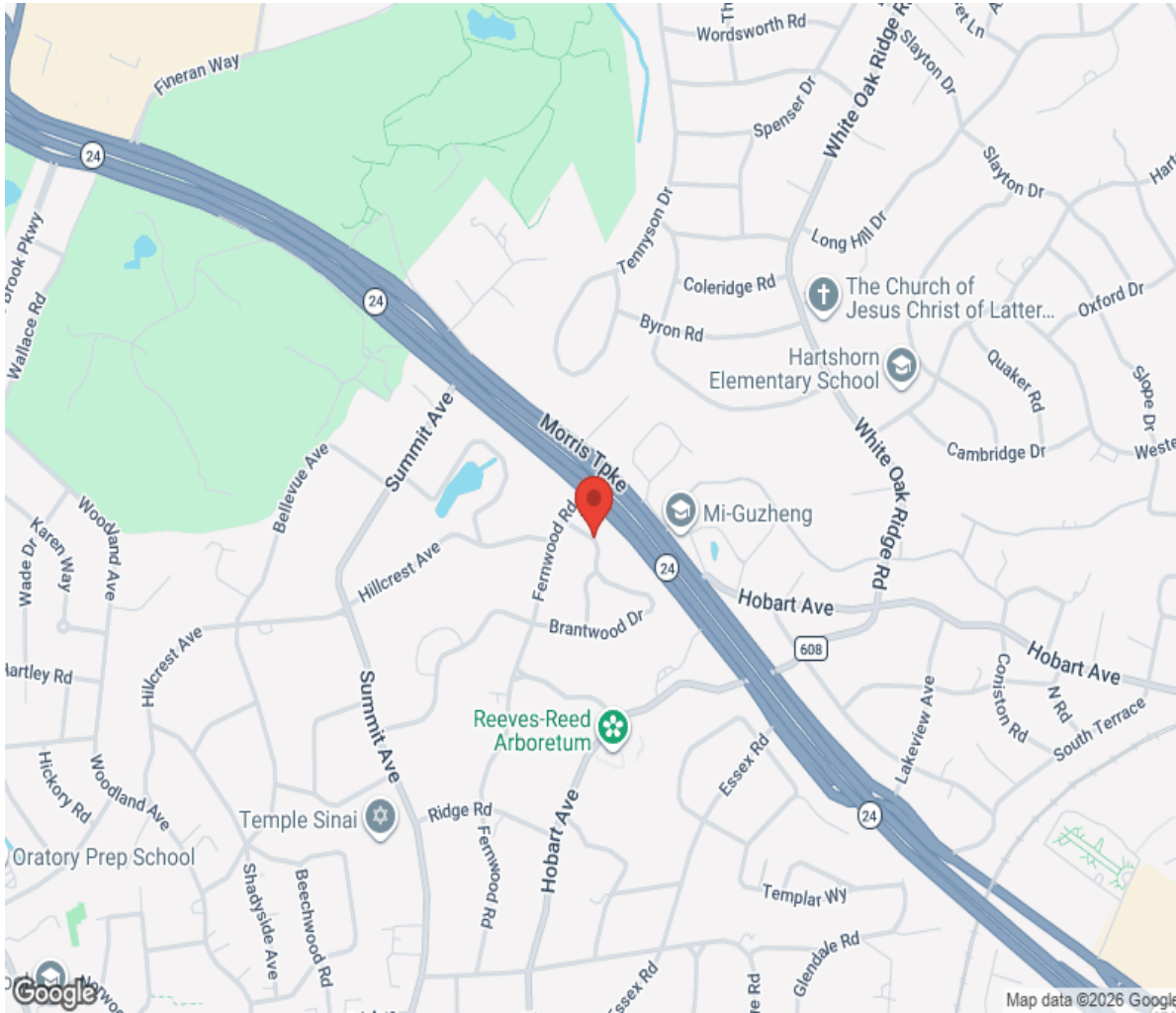
FLOOR 1



FLOOR 2



# Location



# Hamptons

INTERNATIONAL

**+44 (0)20 8618 4551**

**[international@hamptons.co.uk](mailto:international@hamptons.co.uk)**

**[www.hamptons-international.com](http://www.hamptons-international.com)**