

Hamptons

INTERNATIONAL



Queen Annes Grove, London, W4

5  5  3 

GUIDE PRICE

£4,950,000

(£4,950,000)

Property details



Key features

- **Detached Home**
- **Grade II Listed**
- **High Specification Finish**
- **Wrap Around Garden**
- **Roof Terrace**
- **Five Bedrooms**
- **Five Bathrooms**
- **Three Reception Rooms**

Queen Annes Grove, London, W4

5 🏠 5 🚗 3 📺

GUIDE PRICE

£4,950,000

(£4,950,000)

Description

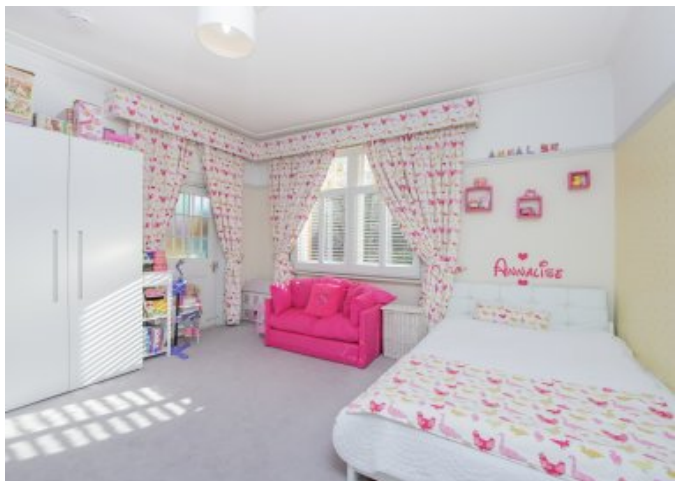
A stunning and spacious Grade II Listed detached family home, located in the heart of Chiswick's highly desirable Bedford Park. This exceptional property is presented in outstanding condition, while retaining much of its period charm having been sympathetically modernised by the current owners. Occupying a prominent corner plot and set back from the road behind a beautifully landscaped front garden with classic Bedford Park white palisade fencing, the house is naturally bright throughout and offers well-balanced living and entertaining spaces across four floors. The ground floor features a generous entrance hallway, boasting elegant stained-glass windows, herringbone hardwood flooring, a guest cloakroom, and a utility room. The front reception room is bathed in natural light, enhanced by high ceilings, a large bay window, a feature fireplace, and herringbone hardwood flooring. A second reception room, currently used as a dining room, showcases classic paneled walls, a charming bay window, and the same exquisite herringbone flooring. To the rear of the property, a third reception room with a feature fireplace and tiled flooring connects seamlessly with the contemporary eat-in kitchen. Designed for both practicality and style, the kitchen offers integrated appliances, ample fitted cabinetry, a breakfast bar, tiled flooring, and direct access to the beautifully maintained garden. The first floor is home to the impressive principal bedroom suite, which includes fitted wardrobes, a large bay window, and a luxurious, modern shower room. Two further well-proportioned double bedrooms can also be found on this level, one of which has access to a spacious private balcony spanning the width of the house. A stylish family bathroom, complete with a bathtub and separate walk-in shower, completes the first floor. The second floor offers a fourth double bedroom with an en suite shower room, a fifth bedroom currently used as a study, and an additional shower room. To the rear is a large decked roof terrace providing additional outside space. The top floor features a versatile loft room, measuring 21'4 x 9'7, with its own en suite shower room, providing additional accommodation or flexible living space as required. This exquisite property blends timeless period elegance with modern conveniences, making it a truly remarkable family home in one of Chiswick's most prestigious locations. Situation Queen Annes Gardens is an attractive tree lined residential road situated in the highly desirable Bedford Park area of Chiswick. The property is within walking distance of the sought-after independent schools Orchard House and Chiswick and Bedford Park Preparatory School. The property is also a short walk from Turnham Green Terrace, Turnham Green (District Line) station and Chiswick High Road. Property Ref Number: HAM-0145











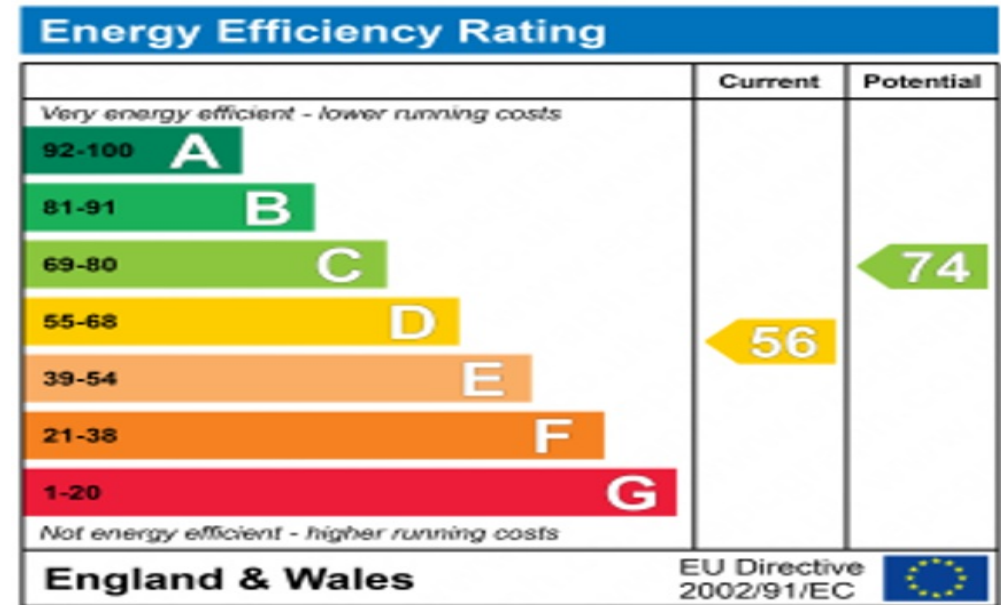












Floor plan

QUEEN ANNES GROVE

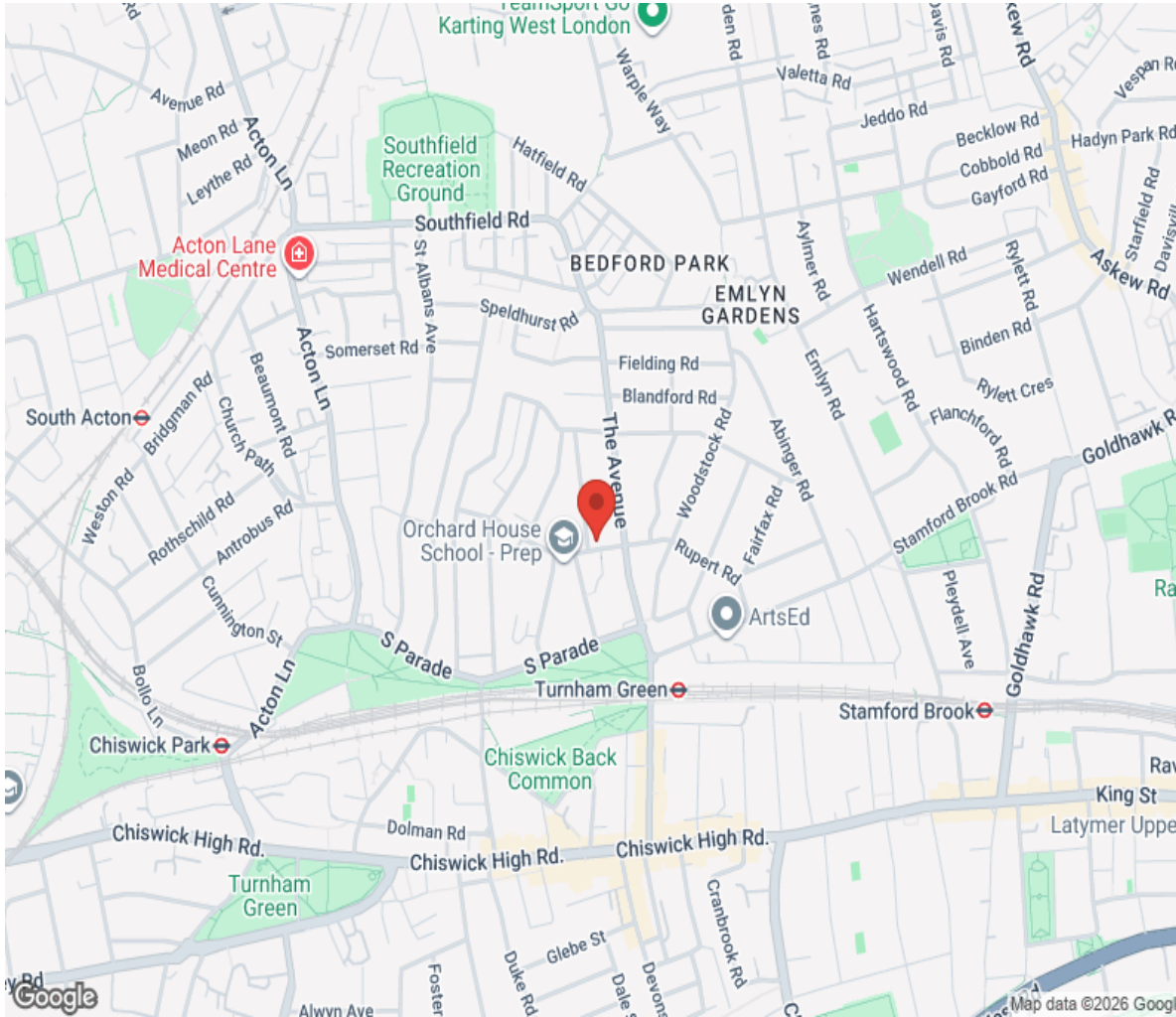
Approximate Gross Internal Area

5362 sq. ft. (503.05 sq. m.)



Drawn for information and identification purposes only.

Location



Hamptons

INTERNATIONAL

+44 (0)20 8618 4551

international@hamptons.co.uk

www.hamptons-international.com