


Hamptons

INTERNATIONAL



Horbury Mews London W11

4  2  3 

£20,000

(£14,625)

Property details



Horbury Mews London W11

4 🏠 2 🚗 3 📄

£20,000
(£14,625)

Description

Tucked away on a serene cobbled mews with exclusive access to the picturesque Ladbroke Square Communal Gardens, this beautifully refurbished three-bedroom house is a true gem. Spanning four generous floors, the property features expansive living spaces, including two elegant reception rooms and a delightful eat-in kitchen. The open-plan kitchen and dining area radiates sophistication, featuring polished wooden floors that enhance the sense of space and light. Large windows invite an abundance of natural light, creating a warm and inviting atmosphere perfect for both cooking and entertaining. A separate reception room flows effortlessly onto a west-facing patio, creating an ideal setting for outdoor relaxation and entertaining. On the upper floor, a spacious reception room with dual-aspect windows opens onto a charming balcony, filling the space with natural light. The first floor features three well-designed bedrooms with built-in storage. The principal bedroom includes a luxurious en suite with a freestanding bath, dual vanity, and underfloor heating. A stylish family bathroom serves the other two bedrooms, one of which has access to a second balcony. To check broadband and mobile phone coverage please visit Ofcom here ofcom.org.uk/phones-telecoms-and-internet/advice-for-consumers/advice/ofcom-checker Situation Horbury Crescent connects Ladbroke Road with Kensington Park Road and is a short walk away from the amenities of Holland Park Avenue and Notting Hill Gate underground station with Central, District and City lines. Mew House Recently Refurbished Over 2200 SQ. FT Communal Garden Unfurnished Garage Built In Storage Council Tax Band: H











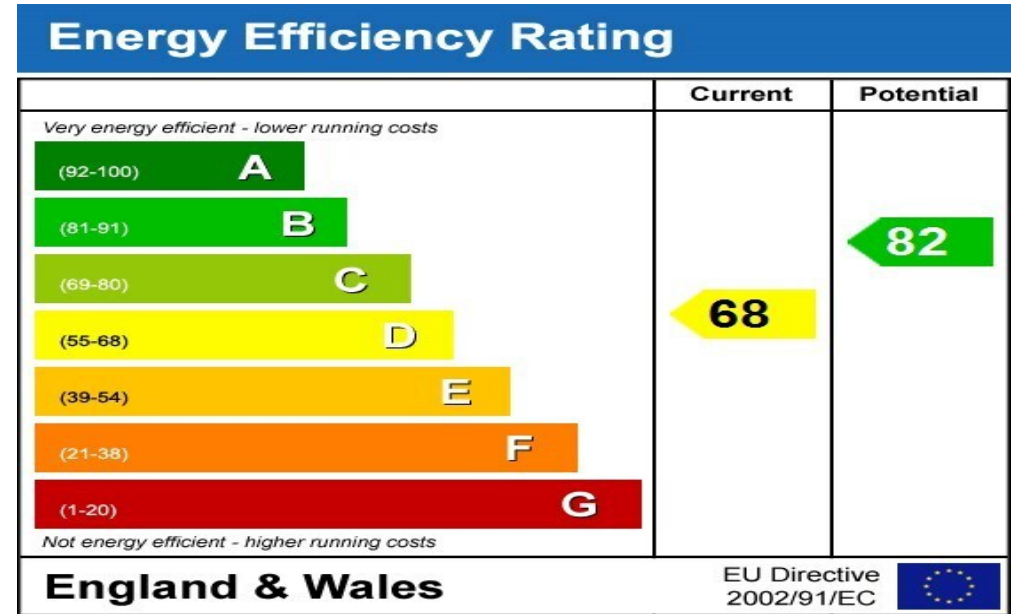






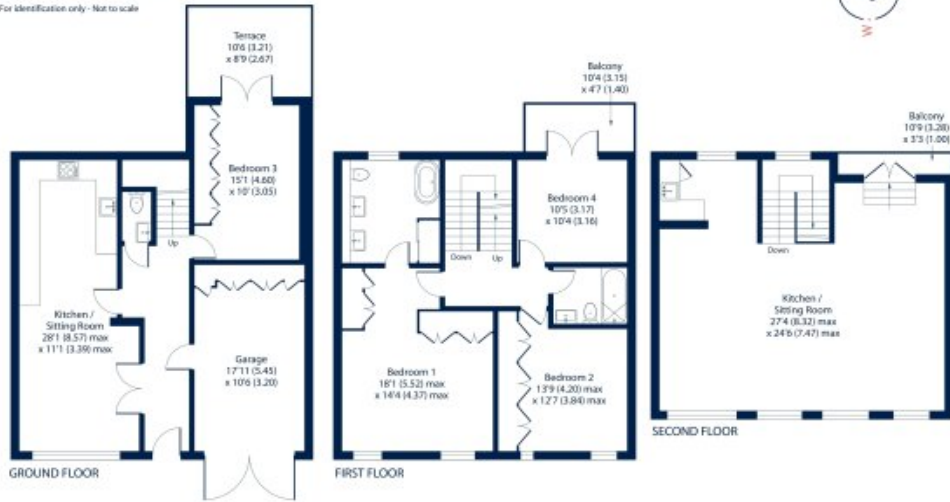






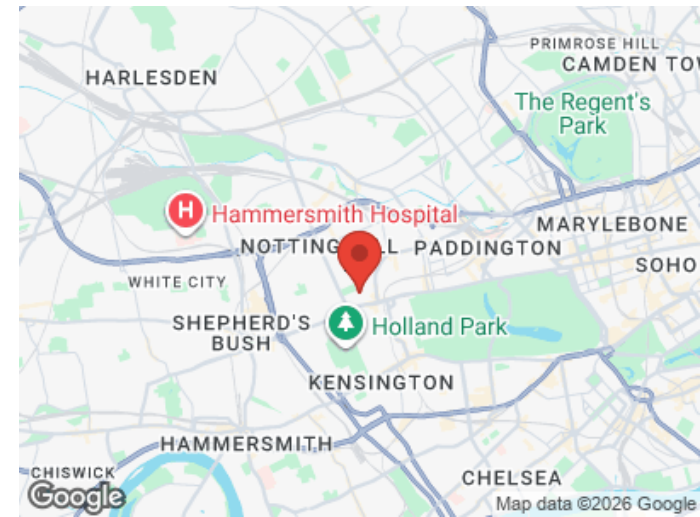
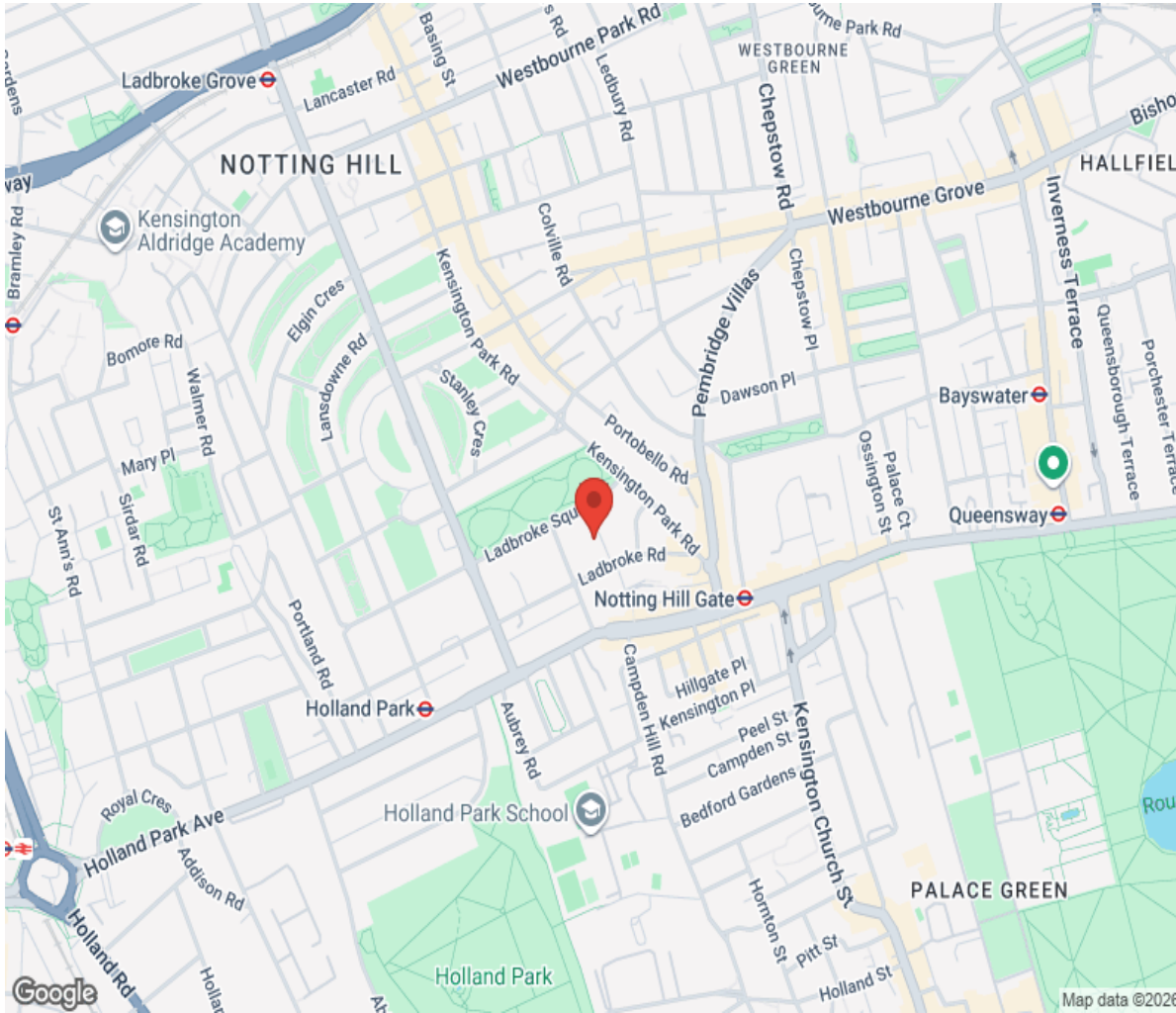
Floor plan

Approximate Area = 2040 sq ft / 189.5 sq m
Garage = 191 sq ft / 17.7 sq m
Total = 2231 sq ft / 207.2 sq m
For identification only - Not to scale



Floor plan produced in accordance with RICS Property Measurement 2nd Edition.

Location



Hamptons

INTERNATIONAL

+44 (0)20 8618 4551

international@hamptons.co.uk

www.hamptons-international.com