

# Hamptons

INTERNATIONAL



**649 Wexford Bayne Rd, Wexford, PA 15090**

5 🏠 4 🚗

**£290,000**

**(\$375,000)**

## Property details



### Key features

- **Cooling: Central A/C**
- **Fireplace Count: 2 Fireplaces**
- **Heating Type: Forced Air**
- **Sewer: Septic**
- **Water: Well**

### Attributes

- 🏠 **Garage**
- **Apartment**

**649 Wexford Bayne Rd, Wexford, PA 15090**

5 🏠 4 🏠

**£290,000**  
**(\$375,000)**

## Description

Prime estate property in Wexford to be sold in "AS IS" condition. Classic brick 5 Bedroom 2 Bath 2 Powder Room home situated on a 1.328 wooded lot in Marshall Township offers unlimited potential. Bring your imagination to transform this expansive home and land into a one-of-a-kind, architectural unique gem. It features spacious room sizes, hardwood floors, updated KIT, multiple windows add light, updated furnace and walk out lower level with fireplace. The upper level of the detached garage features a sun-filled apartment, ideal for a home office, nanny/ in law suite or playroom but does need updates and repairs to the kitchen, full bath and interior. This expansive lot and location could also be home to your ultimate dream to design and build the home you've always wanted. Don't let this opportunity pass you by in North Allegheny Schools, Bradfordwoods Elementary.











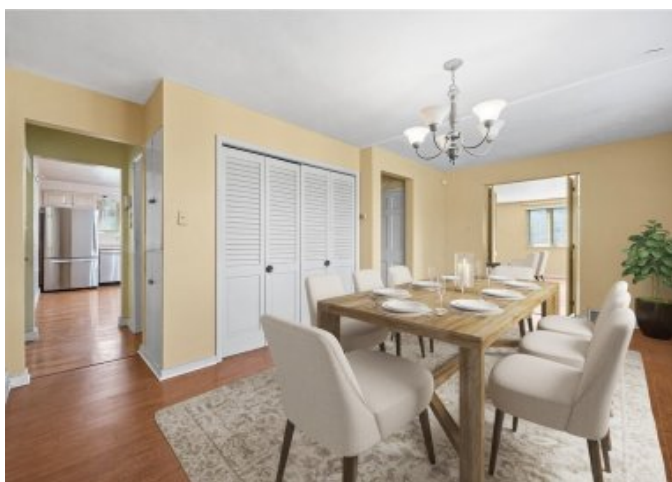


















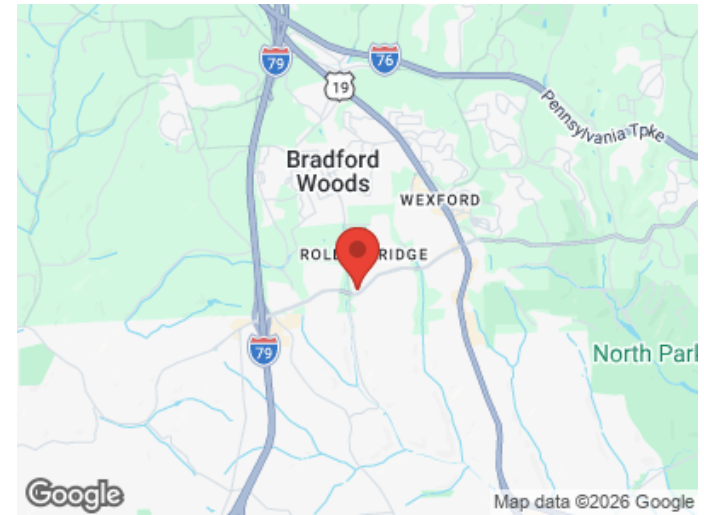
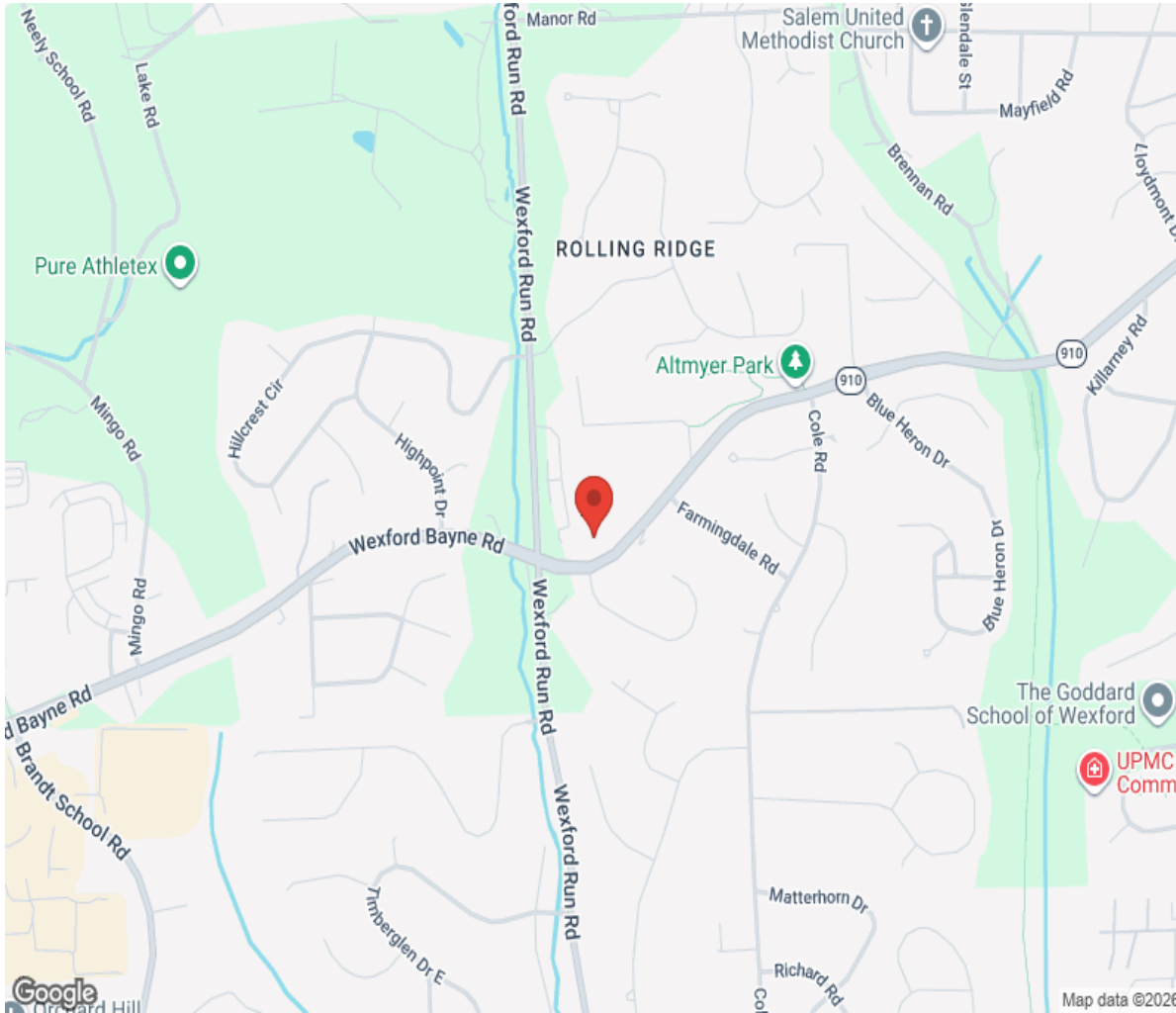








# Location



# Hamptons

INTERNATIONAL

**+44 (0)20 8618 4551**

**[international@hamptons.co.uk](mailto:international@hamptons.co.uk)**

**[www.hamptons-international.com](http://www.hamptons-international.com)**