

Hamptons

INTERNATIONAL



737 Butlers Gate NE, Marietta, GA 30068

5 𠄎 5 𠄎

£1,010,000

(\$1,290,000)

Property details



Key features

- **Cooling: Central A/C**
- **Fireplace Count: 2 Fireplaces**
- **Garage Count: 2 Car Garage**
- **Sewer: Public**
- **Special Program: Global Luxury**
- **Water: City Water**

Attributes

- 🏊 **Swimming pool**
- 🌳 **With land**

737 Butlers Gate NE, Marietta, GA 30068

£1,010,000
(\$1,290,000)

5 🏠 5 📄

Description

Welcome Home to this stunning brick traditional home on 0.60 acres with pool and flat backyard in the highly sought after swim/tennis community of Hampton Woods. This home boasts five bedrooms and 4.5 baths with a fully finished basement perfect for multigenerational living. The beautiful kitchen is open to the charming fireside family room with built-in cabinetry and spacious breakfast room with wall of windows overlooking the pool and beautifully landscaped backyard. Large dining room with fireplace and ability to seat 12+ opens out to the screened porch and deck area for ease of entertaining. Thoughtfully designed mudroom has custom cabinetry with storage, large pantry and desk area - perfect for a home office. The second level of this home features a gorgeous primary suite with oversized shower and beautiful cabinetry with custom features including hidden laundry baskets. Three additional bedrooms complete the second level including one with en-suite bath and two others that share a bath with double vanity and separate tub/shower area. Completing this level is a homework station with two desks and custom cabinetry easily accessible from the rear staircase located in the family room. The walk-out terrace level of this home is a bright and inviting space, due to the abundance of natural light. It features a spacious family or recreation room perfect for entertaining and a wet bar making game-day or pool snacks easily accessible. The bedroom, full bath and office that complete this level could be used as an in-law suite if needed. The beautifully landscaped backyard is truly unique as beyond the pool there is a large yard perfect for outdoor games and an area ready for a play set or trampoline. This home is a true entertainer's delight with a saltwater pool with diving board, multiple deck areas for grilling and entertaining and beautiful screened-in porch. Located on a short cul-de-sac street in the Mount Bethel Elementary/Dickerson Middle/Walton High School district.































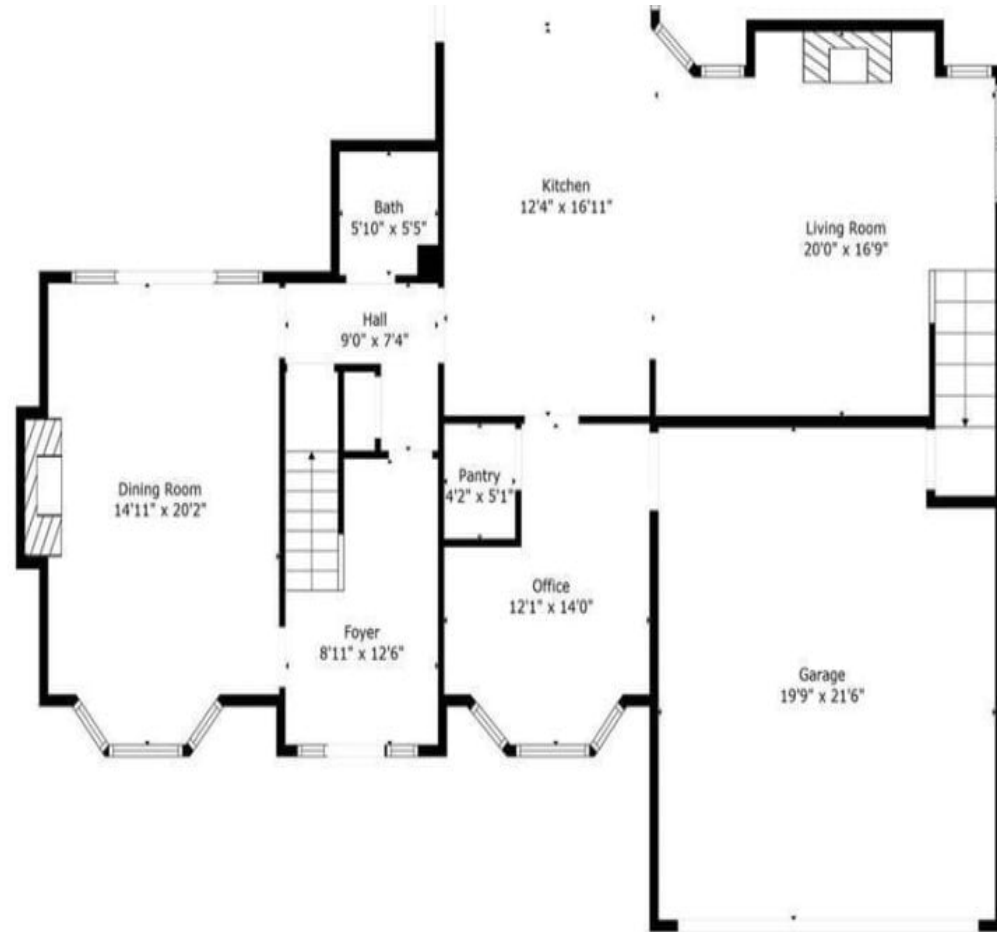


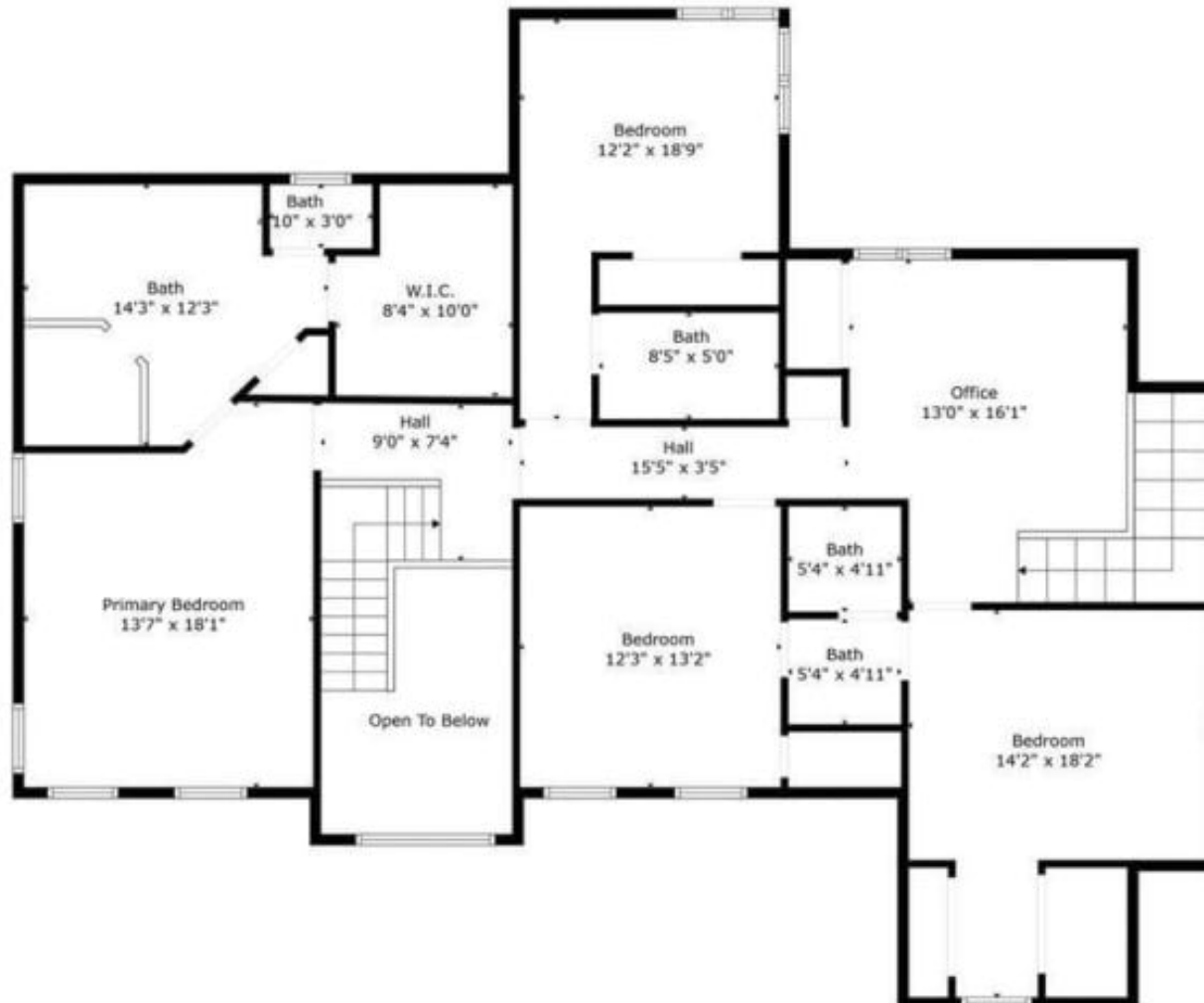








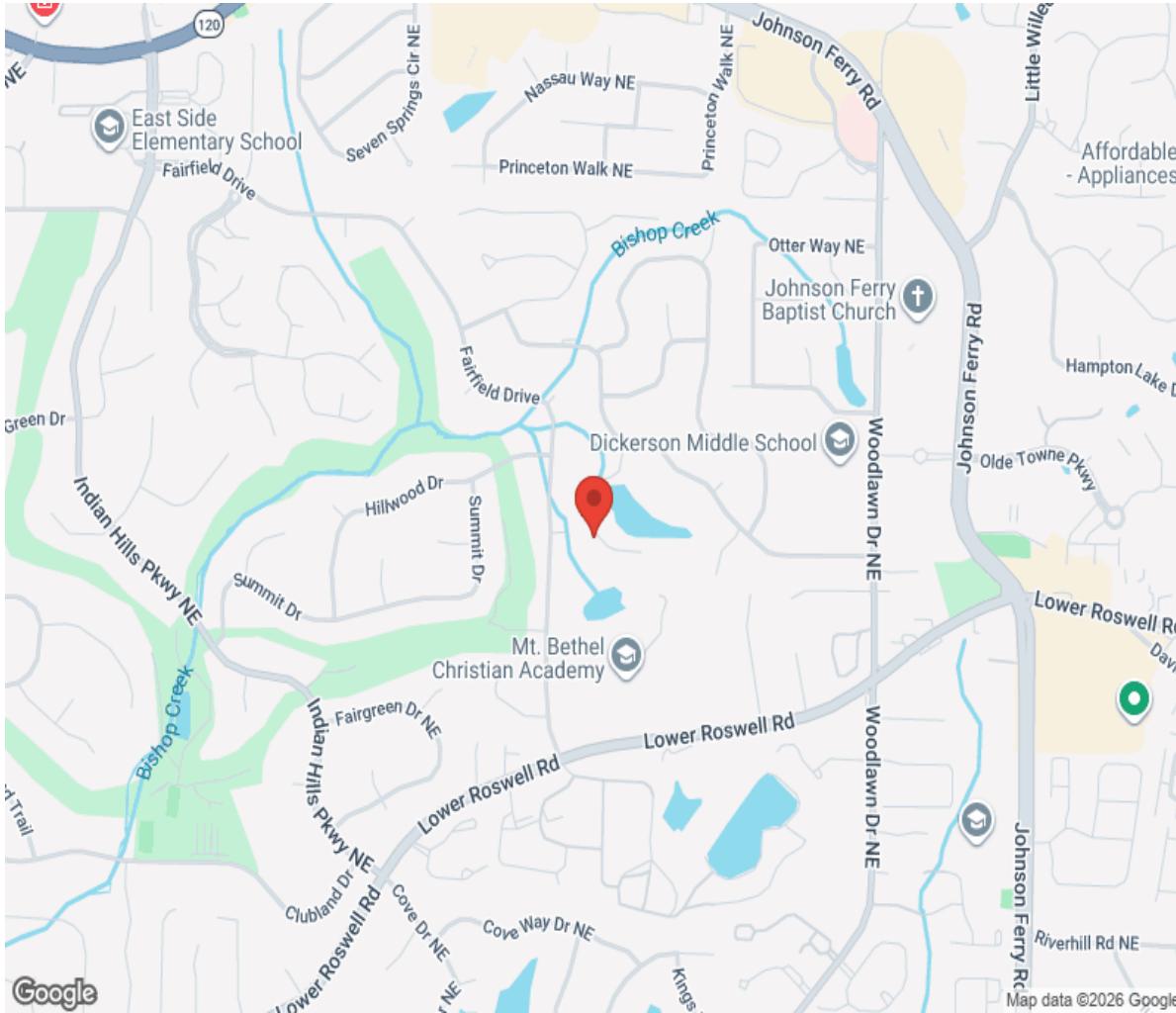




TOTAL: 2891 sq. ft
FLOOR 1: 1283 sq. ft, FLOOR 2: 1608 sq. ft
EXCLUDED AREAS: GARAGE: 411 sq. ft, OPEN TO BELOW: 93 sq. ft, LOW CEILING: 6 sq. ft

Floor Plan Created By Cubicasa App. Measurements Deemed Highly Reliable But Not Guaranteed.

Location



Hamptons

INTERNATIONAL

+44 (0)20 8618 4551

international@hamptons.co.uk

www.hamptons-international.com