

# Hamptons

INTERNATIONAL



**4520 Hampton Woods Dr NE, Marietta, GA 30068**

5 𠄎 5 𠄎

**£950,000**  
**(\$1,250,000)**

## Property details



### Key features

- **Sewer: Public**
- **Fireplace Count: 1 Fireplace**
- **Cooling: Central A/C**
- **Special Program: Global Luxury**
- **Water: City Water**

### Attributes

-  **Garage**
-  **Private parking**

**4520 Hampton Woods Dr NE, Marietta, GA 30068**

**£950,000**  
**(\$1,250,000)**

5  5 

## Description

Welcome Home to this stunning brick traditional home in the heart of East Cobb perfect for entertaining with flat fenced backyard in the highly sought after swim/tennis community of Hampton Woods. This home boasts five bedrooms and 4.5 baths with a fully finished basement allowing for multigenerational living if needed. The beautifully updated kitchen with stainless steel appliances and quartz countertops with island is open to the charming fireside family room with built-in cabinetry. Spacious breakfast room with wall of windows opens to the large deck and screened porch overlooking the beautifully landscaped backyard. Spacious dining room, living room, beautiful sunroom perfect for a home office and separate laundry room with sink complete the main level which has hardwood flooring throughout. The second level of this home features an oversized primary suite with private screened porch, primary bath with separate soaking tub, shower and large vanity with two sinks. There is also a walk-in attic for storage off the primary closet. Three additional bedrooms complete the second level including one with en-suite bath and two others that share a bath with double vanity and separate tub/shower area. The walk-out terrace level of this home is a bright and inviting space. It features a spacious family or recreation room perfect for entertaining and a wet bar. The bedroom, full bath and office/exercise room that complete this level could be used as an in-law suite if needed. Side entry two car garage has additional open storage area great for parking or storing adult or kids toys (kayaks, bikes, etc.). You can easily park additional cars in the flat driveway. Very active swim/tennis community with swim and tennis teams available. Located on cul-de-sac in the Mount Bethel Elementary/Dickerson Middle/Walton High School district.



































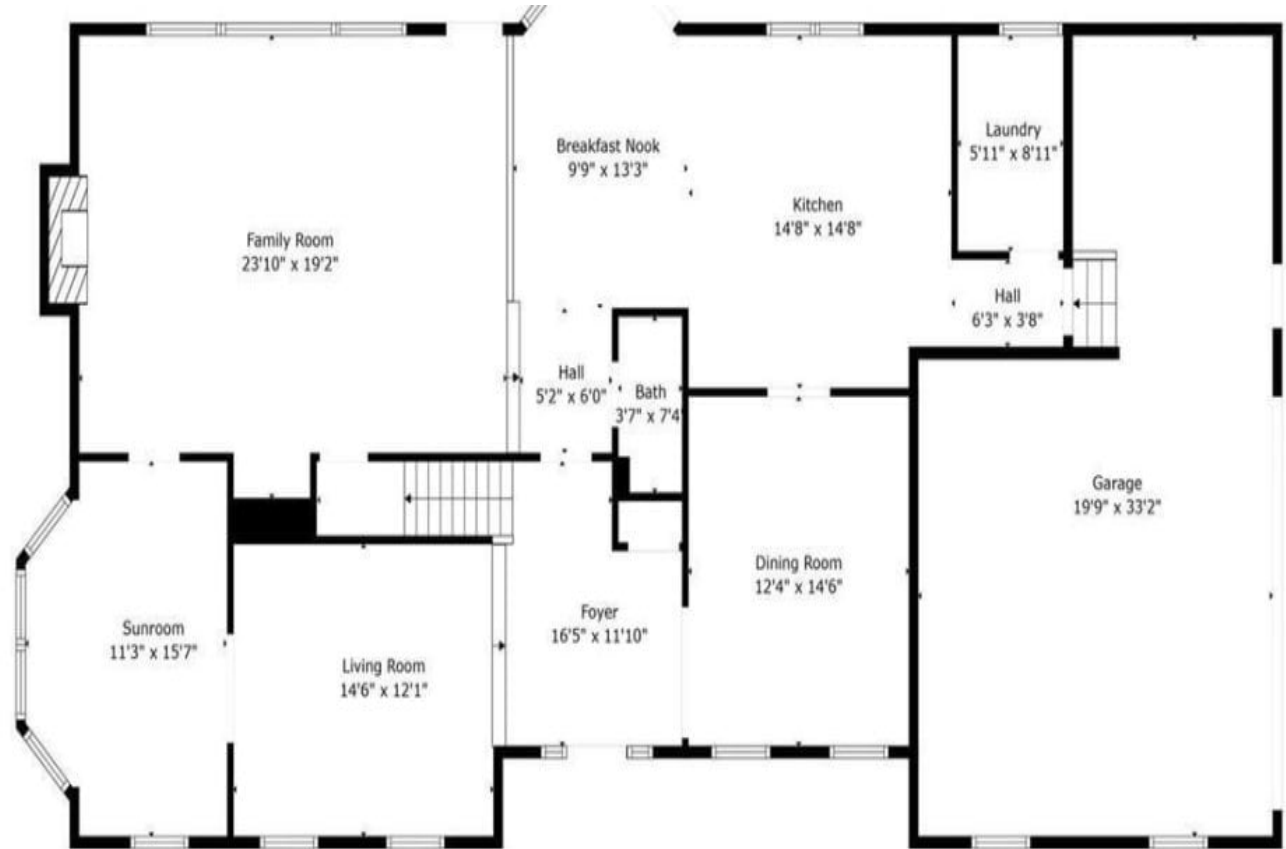








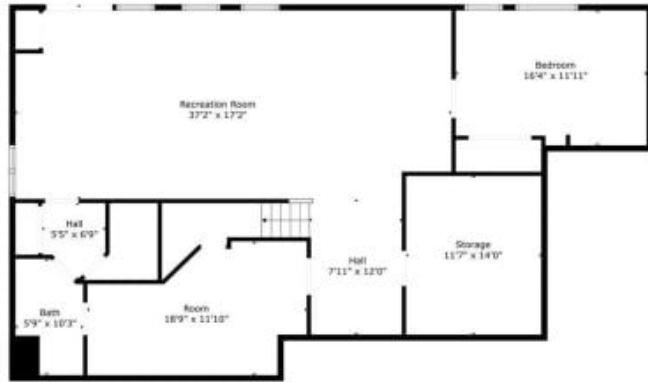






**TOTAL: 3156 sq. ft**  
FLOOR 1: 1603 sq. ft, FLOOR 2: 1553 sq. ft  
EXCLUDED AREAS: GARAGE: 539 sq. ft, FIREPLACE: 11 sq. ft, OPEN TO BELOW: 132 sq. ft

Floor Plan Created By Cubicasa App. Measurements Deemed Highly Reliable But Not Guaranteed.



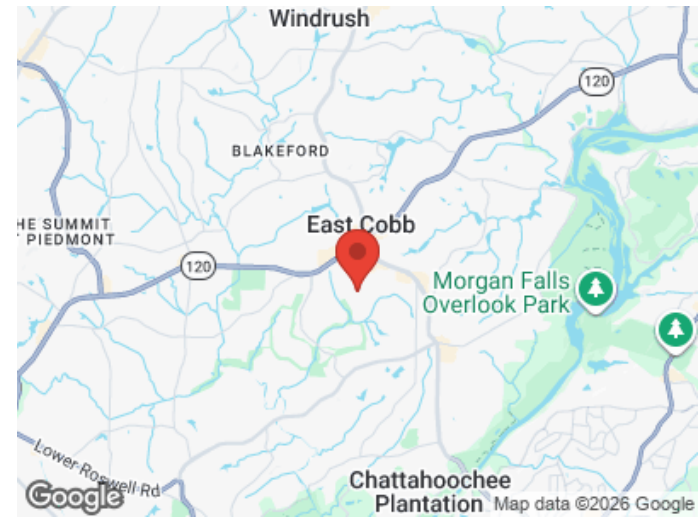
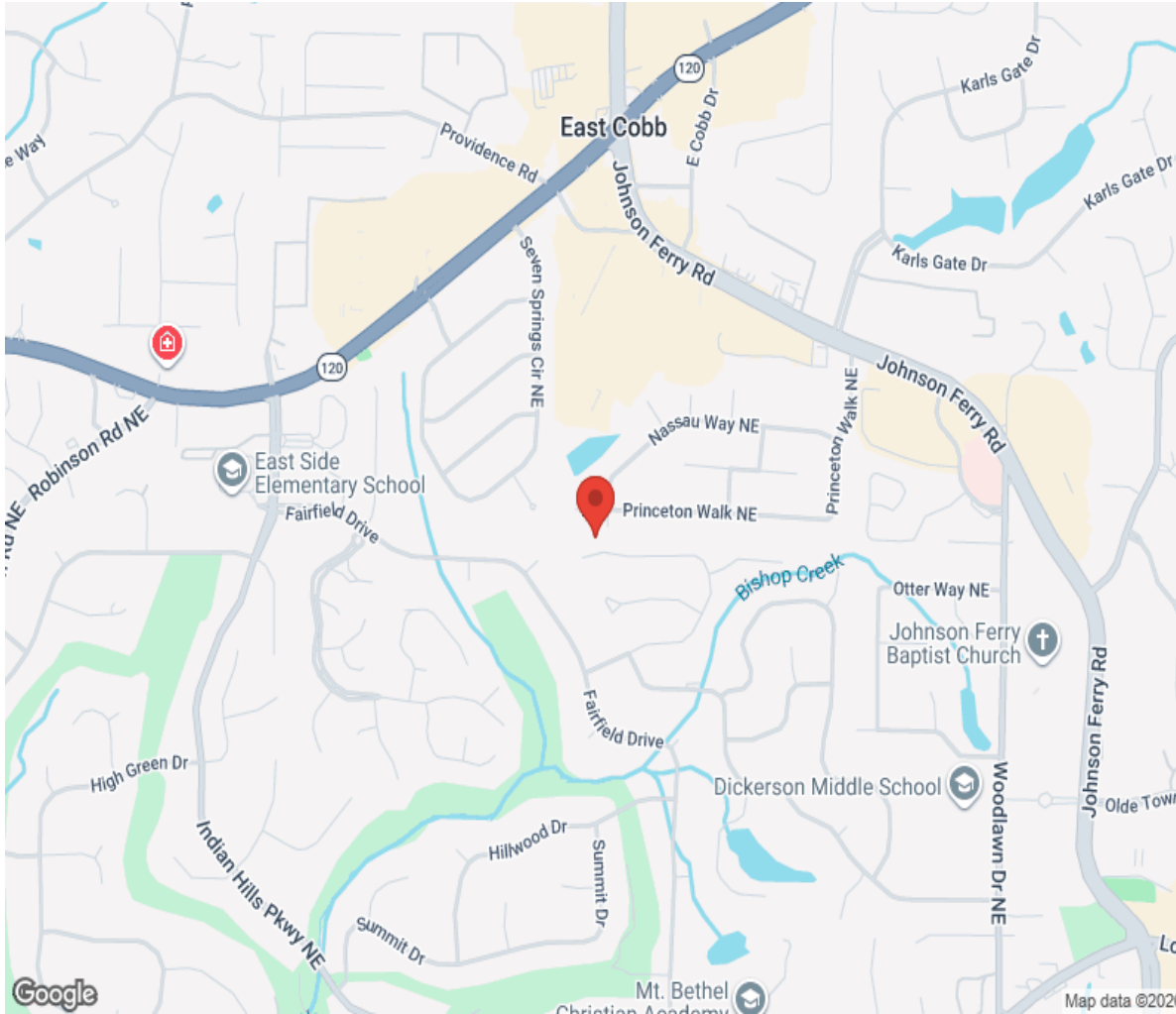
NORMAL 6'6" x 6" H  
FLOOR 1: 1201 SQ. FT.  
EXCELLENT FINISHES, SEE LISTING FOR MORE INFO.  
View Plans Provided For Reference Only. Measurements, Rooming Layouts, Details May Not Be Accurate.





# Location

---



# Hamptons

INTERNATIONAL

**+44 (0)20 8618 4551**

**[international@hamptons.co.uk](mailto:international@hamptons.co.uk)**

**[www.hamptons-international.com](http://www.hamptons-international.com)**