

Hamptons

INTERNATIONAL



37 Portwine Rd, Willowbrook, IL 60527

3 🏠 4 🏠

£310,000

(\$400,000)

Property details



Key features

- **Sewer: Public**
- **Cooling: Central A/C**
- **Garage Description: Garage**
- **Basement: Walk-out**
- **Heating Type: Forced Air**

Attributes

-  **Garage**
-  **Garden**
-  **Refurbished**

37 Portwine Rd, Willowbrook, IL 60527

£310,000
(\$400,000)

3  4 

Description

This sunny and bright tri-level townhome is the largest model in LHV, and features a flowing floor plan. The main floor has hardwood throughout and the large, eat-in kitchen walks out onto one of two private decks, also accessible from the foyer. The rare, extended back deck is off of the dining room and offers an ideal space for outdoor dining or morning coffee. The primary ensuite is a true retreat, complete with a walk-in closet and a tastefully updated full bath. With two full and two half bathrooms-all thoughtfully renovated-comfort and convenience are built in throughout the home. The family room has a gas fireplace, small kitchenette, and walks out onto a patio that opens to a serene backyard oasis perfect for relaxing or entertaining. The professionally landscaped garden is filled with perennials. Additional highlights include a lower level laundry and a two-car garage with ample storage, making this home as practical as it is inviting. Complete the picture with the lovely lake and walking path, tennis, pickle ball, an exercise room, fishing, boating, an incredible clubhouse and year round activities. From its functional layout to its peaceful outdoor spaces, this home checks every box. Bedroom 13 Feet x 11 Feet (11.0ft x 13.0ft) Bedroom 11 Feet x 11 Feet (11.0ft x 11.0ft) Dining Room 13 Feet x 11 Feet (11.0ft x 13.0ft) Family Room 24 Feet x 17 Feet (17.0ft x 24.0ft) Kitchen 11 Feet x 20 Feet (20.0ft x 11.0ft) Laundry Room 11 Feet x 6 Feet (6.0ft x 11.0ft) Living Room 17 Feet x 14 Feet (14.0ft x 17.0ft) Bedroom 15 Feet x 19 Feet (19.0ft x 15.0ft)

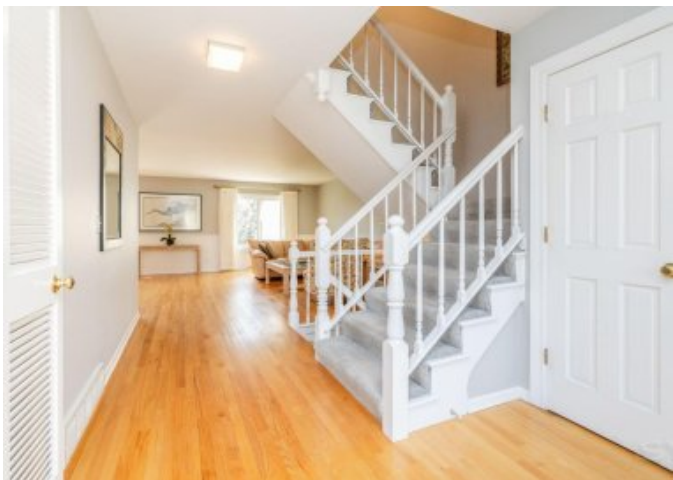






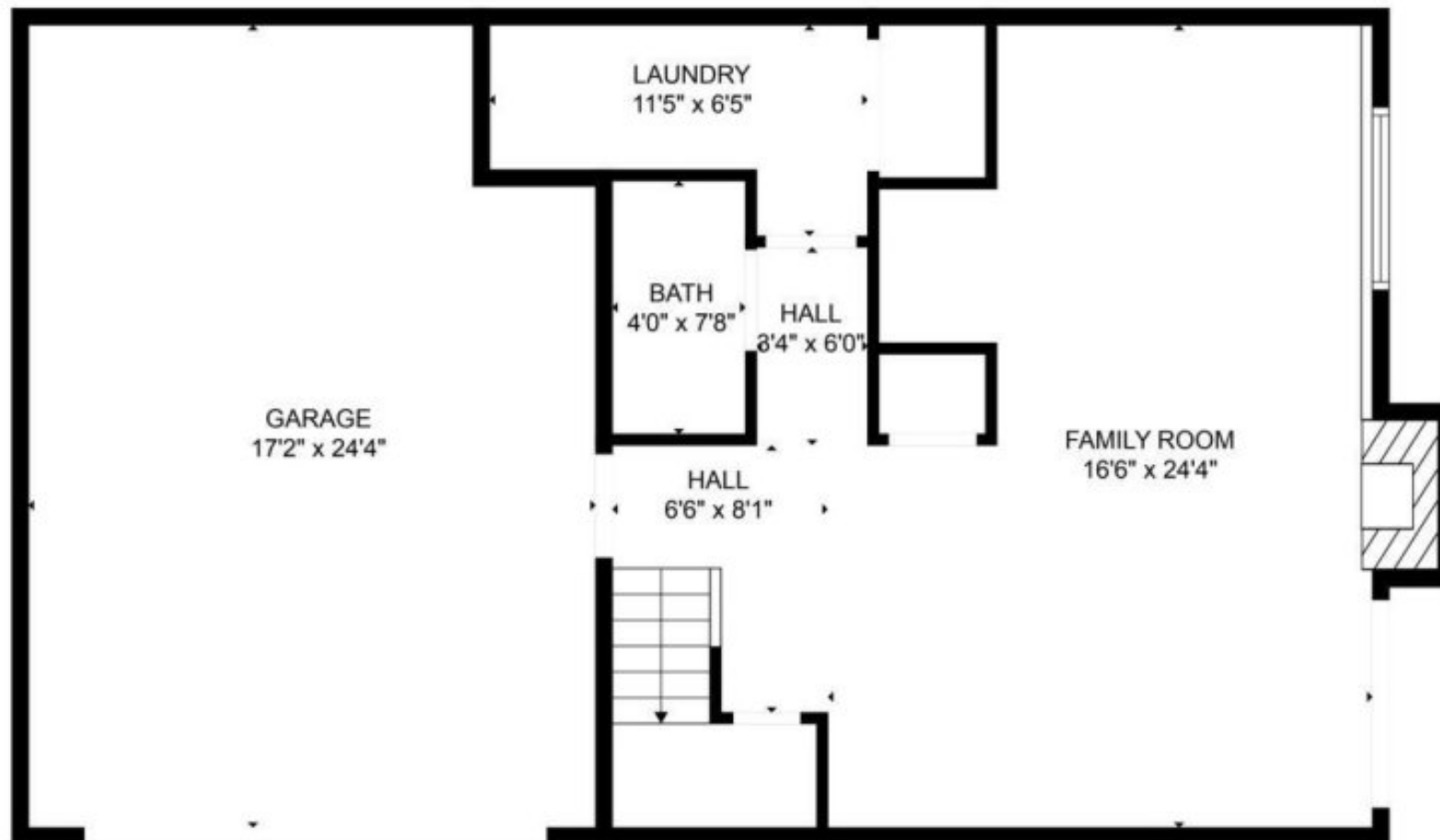


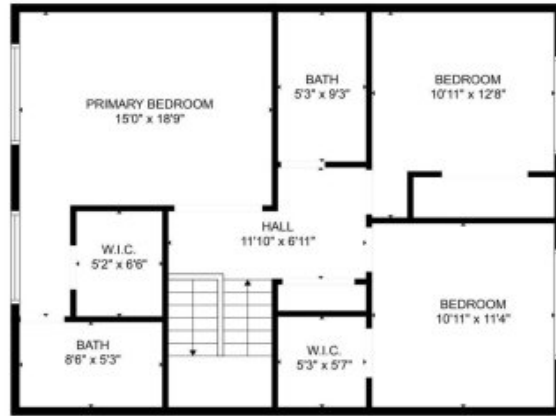








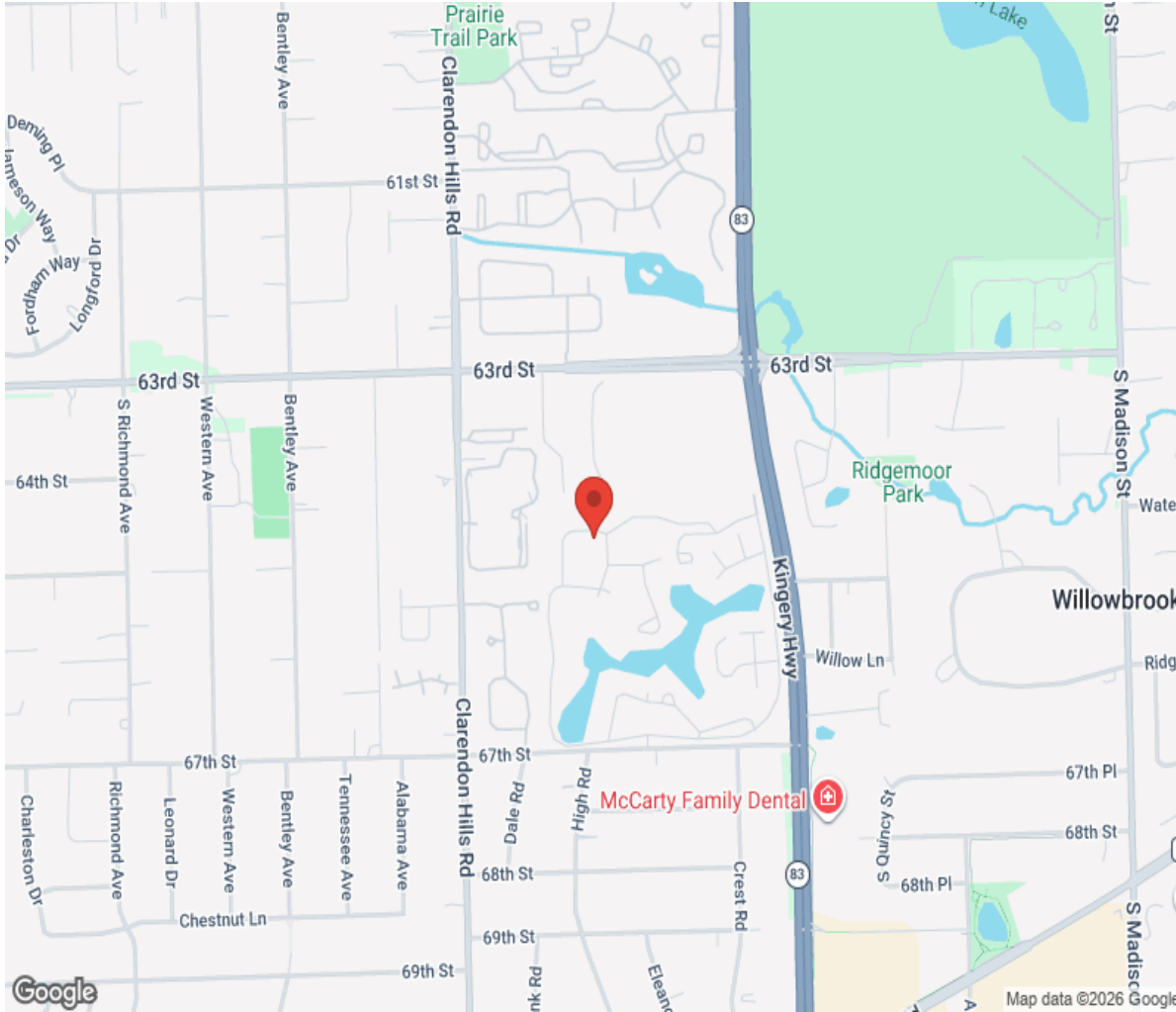




FLOOR PLAN CREATED BY CONCRETE ART PHOTOGRAPHY © 2008. ALL RIGHTS RESERVED. NO PART MAY BE REPRODUCED.



Location



Hamptons

INTERNATIONAL

+44 (0)20 8618 4551

international@hamptons.co.uk

www.hamptons-international.com