

# Hamptons

INTERNATIONAL



**7120 Whipple St, Swissvale, PA 15218**

4 🏠 2 🛏

**£310,000**

**(\$395,000)**


## Property details



### Key features

- **Sewer: Public**
- **Cooling: Central A/C**
- **Heating Type: Forced Air**
- **Water: City Water**

### Attributes

-  **Garage**
-  **Private parking**
-  **Garden**
-  **Commercial**

**7120 Whipple St, Swissvale, PA 15218**

4 🏠 2 🚗

**£310,000**  
**(\$395,000)**

## Description

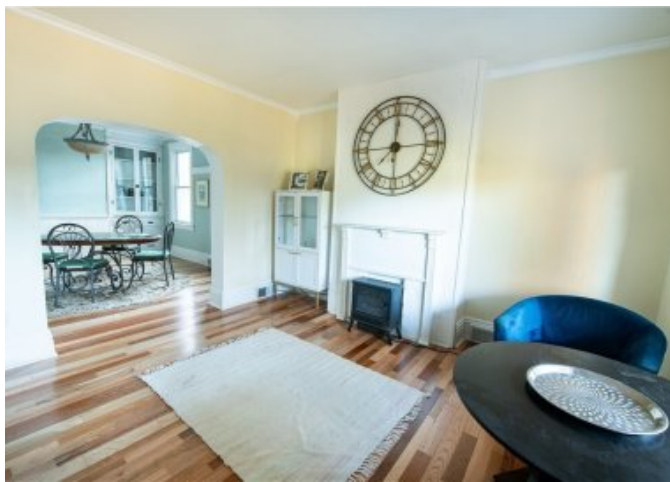
Classic Pittsburgh brick home in a sweet tree-lined neighborhood beside Frick Park, on a double lot (Pgh city line runs through the side lot) with a 2-car detached garage (electric power installed for car charger), potential carport for another car (if you remove part of the fence), 3 mature fruit trees (Macintosh & Granny Smith apples and Rainier Cherry), blueberry bush and room to play. Awesome front porch and rear garden-level patio. 5 BRs, depending how you use them (3BRs and 2 offices?), 2 full baths, new central air, new hardwood floors, many improvements throughout, including a new roof. French drains in the basement, so possibility of an additional basement room/studio. Less than half a mile from Braddock and all that Regent Square and Swissvale have to offer. Just a few blocks from Commercial St (the back way up to Squirrel Hill) and Frick Park trailheads. Some homes just have a good feel to them, and this one is one of those...home sweet home.













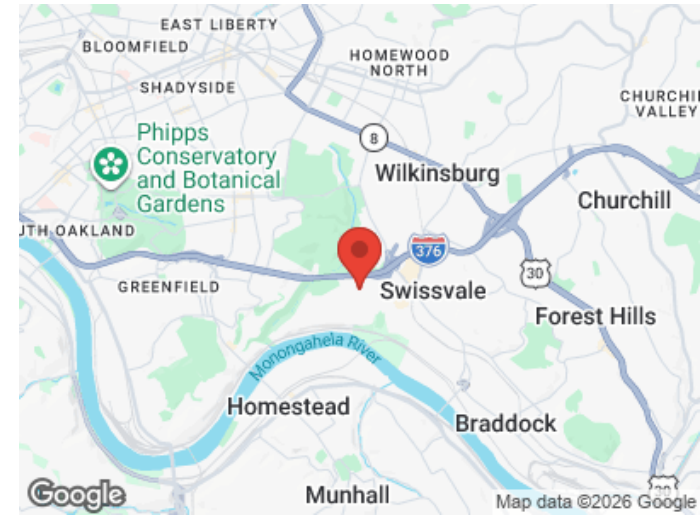
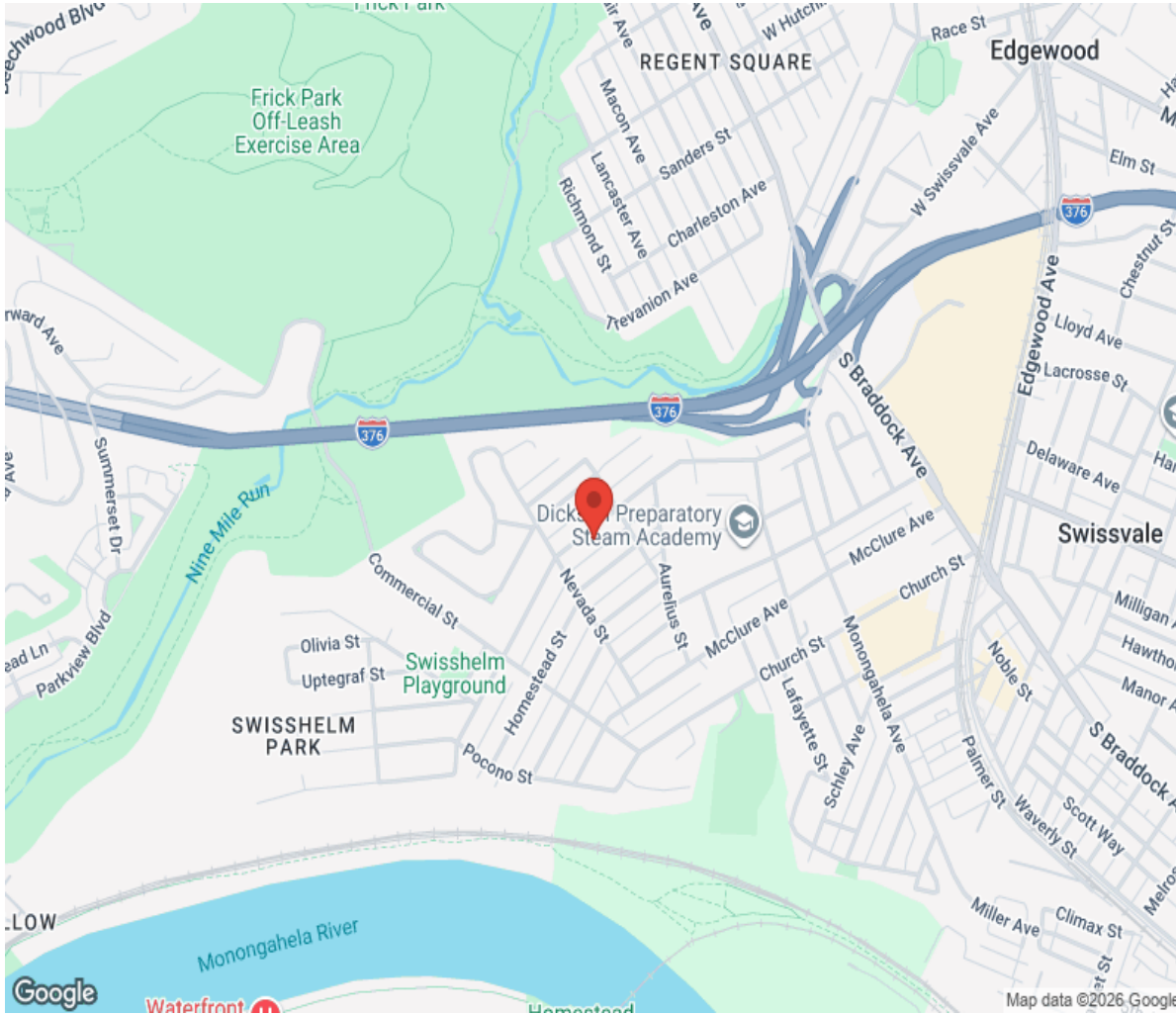








# Location



**Hamptons**

INTERNATIONAL

**+44 (0)20 8618 4551**

**[international@hamptons.co.uk](mailto:international@hamptons.co.uk)**

**[www.hamptons-international.com](http://www.hamptons-international.com)**