

Hamptons

INTERNATIONAL



2717 Ellen Rd, Bellmore, NY 11710

5 🏠 3 🛏

£660,000

(\$879,000)

Property details



Key features

- **Garage Count: 2 Car Garage**
- **Appliances: Refrigerator**
- **Flooring: Hardwood**
- **Lot Description: Level**
- **Appliances: Microwave**
- **Appliances: Dishwasher**
- **Heating - Fuel Type: Hydro Heat**
- **Heating - Fuel Type: Gas**
- **Lot Description: Corner**
- **Sewer: Public**

Attributes

 **Garage**

2717 Ellen Rd, Bellmore, NY 11710

5  3 

£660,000
(\$879,000)

Description

Introducing this Unique 5 Bedroom 2.5 Bathroom Barcelona Splanch in the heart of South Belmore. This fabulous home features 10 Rooms starting with a main level Entrance Hall with Large Coat Closet which leads to an Eat In Kitchen with a Pantry, Laundry Area and Access to your private Yard, a Formal Dining Room and a Family Room with Sliders to Two Side Yards, a Half Bathroom and 2 Car Garage. On the second Level you have an expansive Formal Living Room and a few steps up to your third level you have a second Living Room or Den overlooking the Living Room, 4 Nice Bedrooms all with Double Closets, a Full Bathroom with a Two Sink Vanity and BathTub and a Primary Bedroom with a Walk In Closet and Private Bathroom. This Home also offers a Partial Finished Basement with Utilities. Tax Reduction Approved for 2025/2026 Tax Roll. Prime Location - A Thriving Community Bellmore is one of Nassau County's most desirable neighborhoods, offering suburban charm with urban convenience. The highly rated school district provides top-tier education, and the town boasts premier shopping, dining, parks and easy access to NYC via Long Island Rail Road or Access to all Major Highways from the nearby Meadowbrook Parkway or Seaford Oyster Bay Expressway. Whether you enjoy Park, nearby beaches, or local restaurants, Bellmore delivers an unmatched lifestyle of convenience and leisure.

























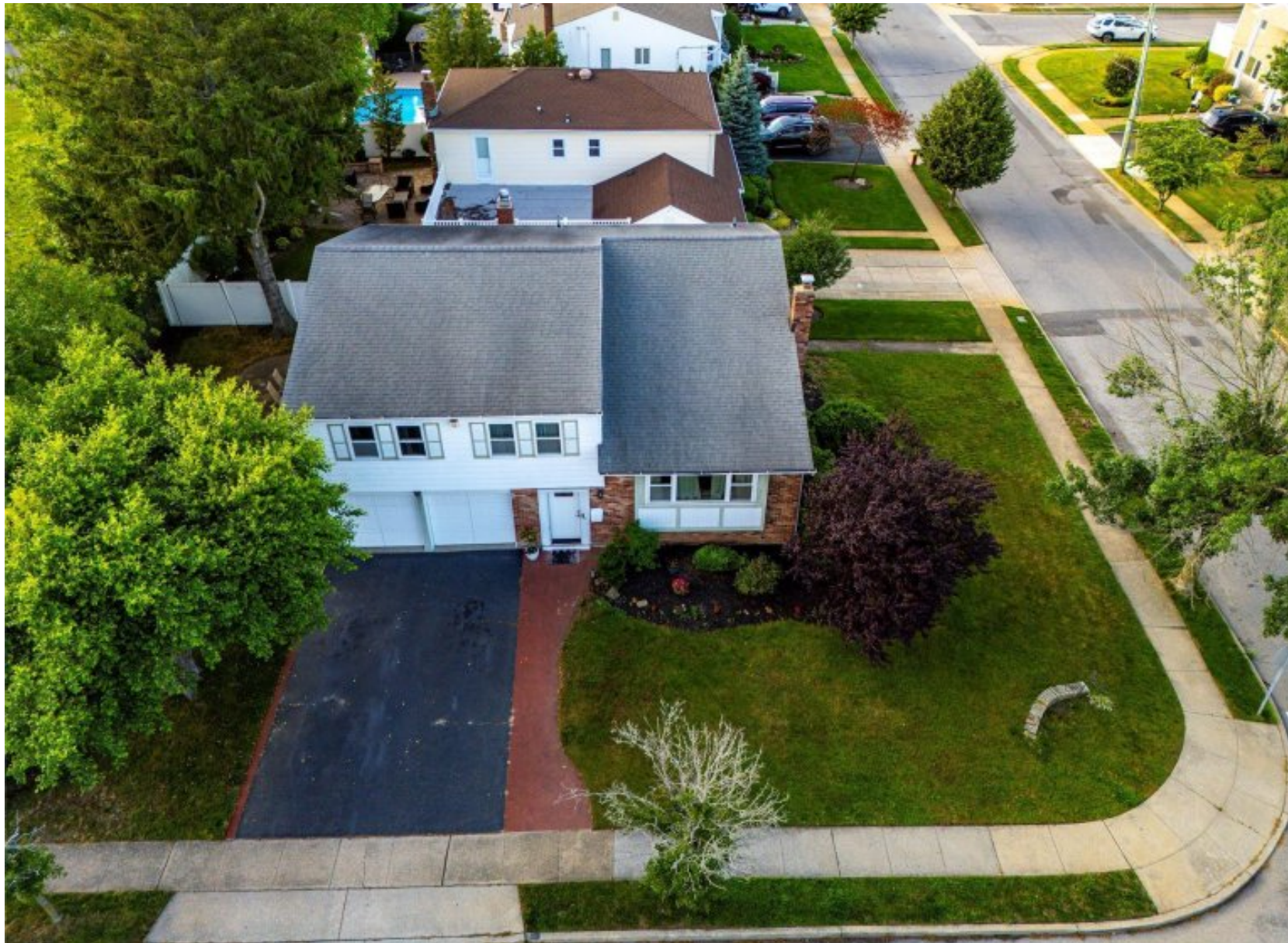




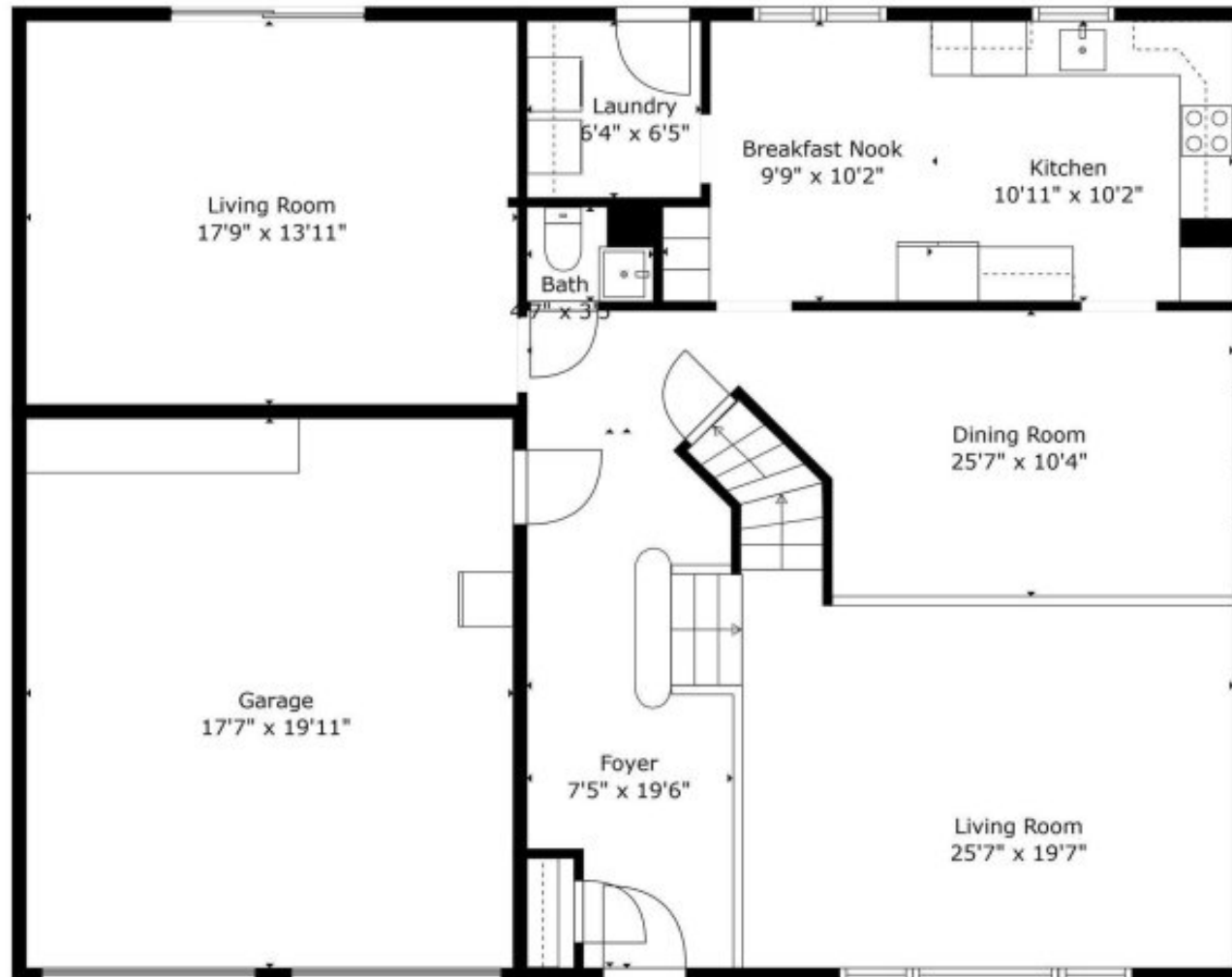












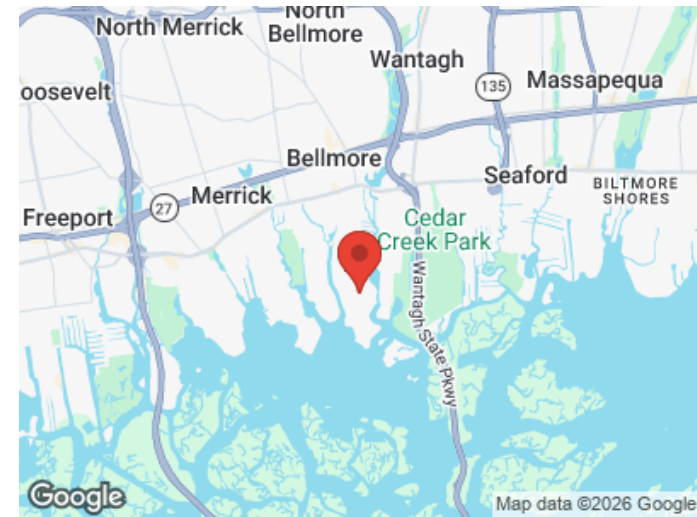
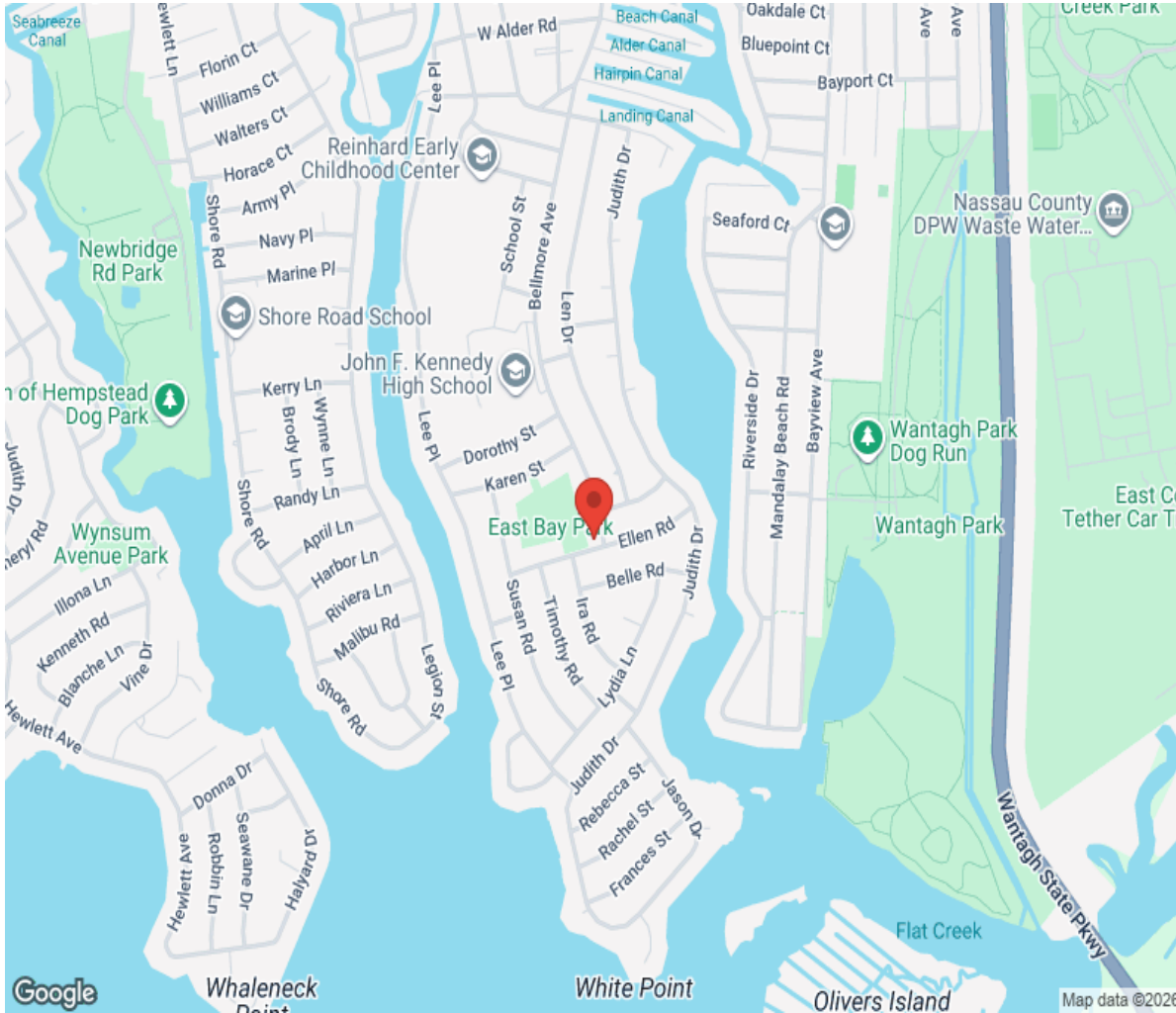
TOTAL: 2386 sq. ft

BELOW GROUND: 221 sq. ft, FLOOR 1: 1130 sq. ft, FLOOR 2: 1256 sq. ft
EXCLUDED AREAS: UTILITY: 31 sq. ft, BASEMENT: 221 sq. ft, GARAGE: 351 sq. ft,
OPEN TO BELOW: 244 sq. ft
WALLS: 217 sq. ft



Floor Plan Created By Cubicasa App. Measurements Deemed Highly Reliable But Not Guaranteed.

Location



Hamptons

INTERNATIONAL

+44 (0)20 8618 4551

international@hamptons.co.uk

www.hamptons-international.com