

Hamptons

INTERNATIONAL



2434 NW Alan Ave, East Wenatchee, WA 98802

3 1/2 1 1/2

£450,000

(\$590,000)

Property details



Key features

- **Age: Over 50 Years Old**
- **Fireplace Count: 2 Fireplaces**
- **Sewer: Septic**
- **Basement: Finished**
- **Basement: Partial**

Attributes

 **Private parking**

2434 NW Alan Ave, East Wenatchee, WA 98802

£450,000

(\$590,000)

3  1 

Description

2700+ sq ft one-story home with basement, along with several outbuildings all sits on a level two-third acre with views of Columbia River, Mission Ridge and ALL of Wenatchee! From the brand new Trex Deck walk right into your large, entertainer's kitchen which leads into your living room with original hardwood floors. 3 bedrooms, a bathroom, and sunroom complete the main floor. Basement with additional living area, 3/4 bath and nonconforming 4th bedroom. Deck, interior paint, LVP flooring & main bathroom new June 2025. HVAC new 2021. Rare Monkey Tail tree is just part of diverse and abundant landscaping. Six covered parking areas included in the several outbuildings. Shop has been an Avon retail business operating successfully for years.







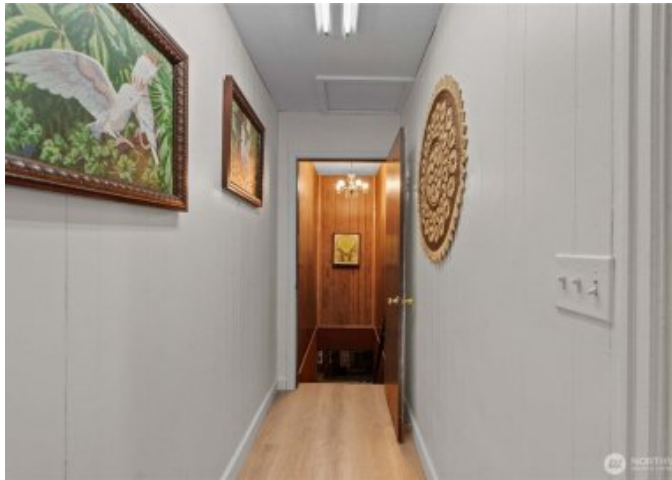














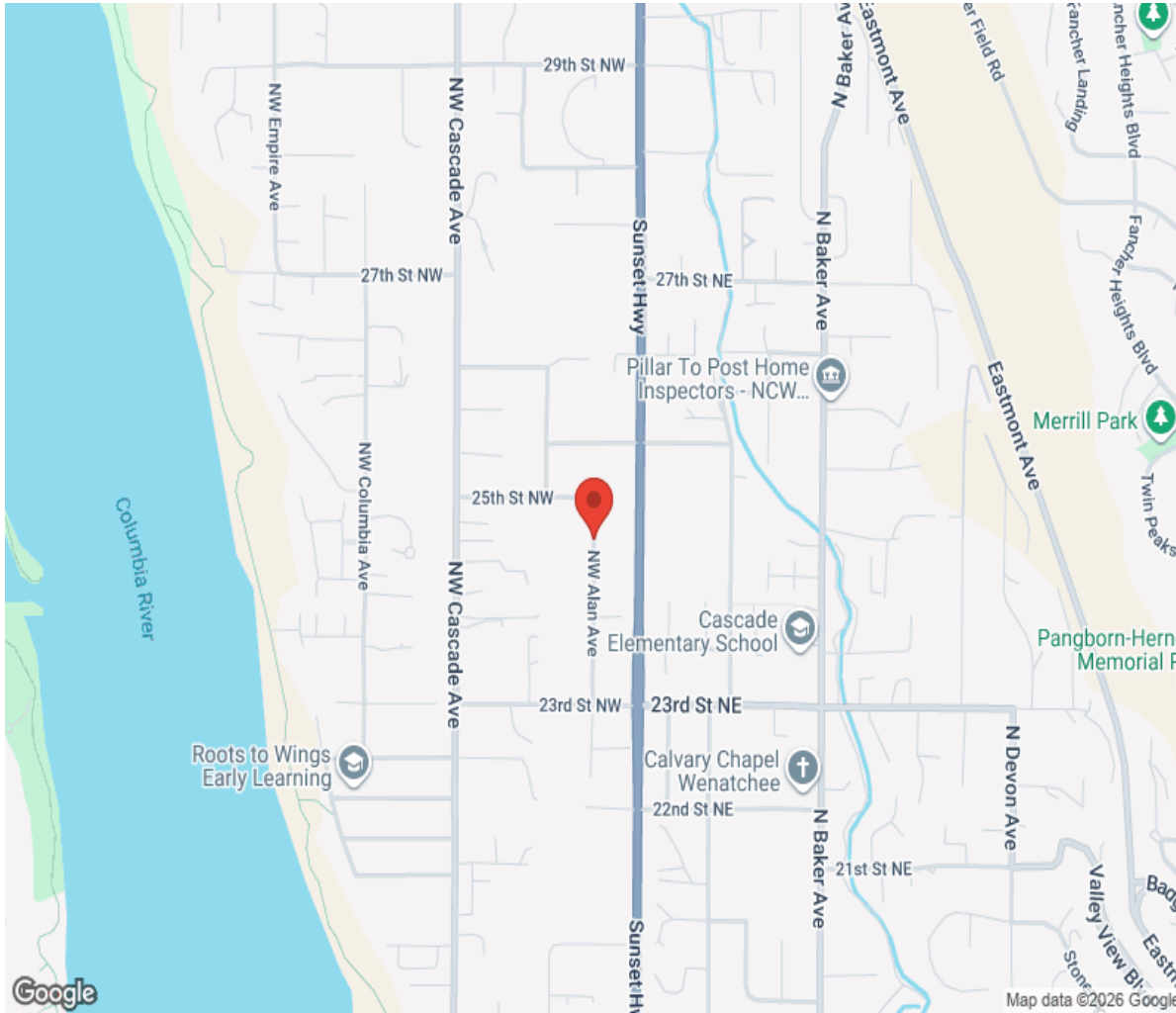








Location



Hamptons

INTERNATIONAL

+44 (0)20 8618 4551

international@hamptons.co.uk

www.hamptons-international.com