

Hamptons

INTERNATIONAL



715 E Schantz Ave, Oakwood, OH 45419

4 🏠 4 🚗

£480,000

(\$650,000)

Property details



Key features

- **Age: Over 50 Years Old**
- **Exterior Description: Stone**
- **Exterior Description: Stucco**
- **Garage Count: 3 Car Garage**
- **Heating Type: Other**

Attributes

-  **Garage**
-  **Refurbished**

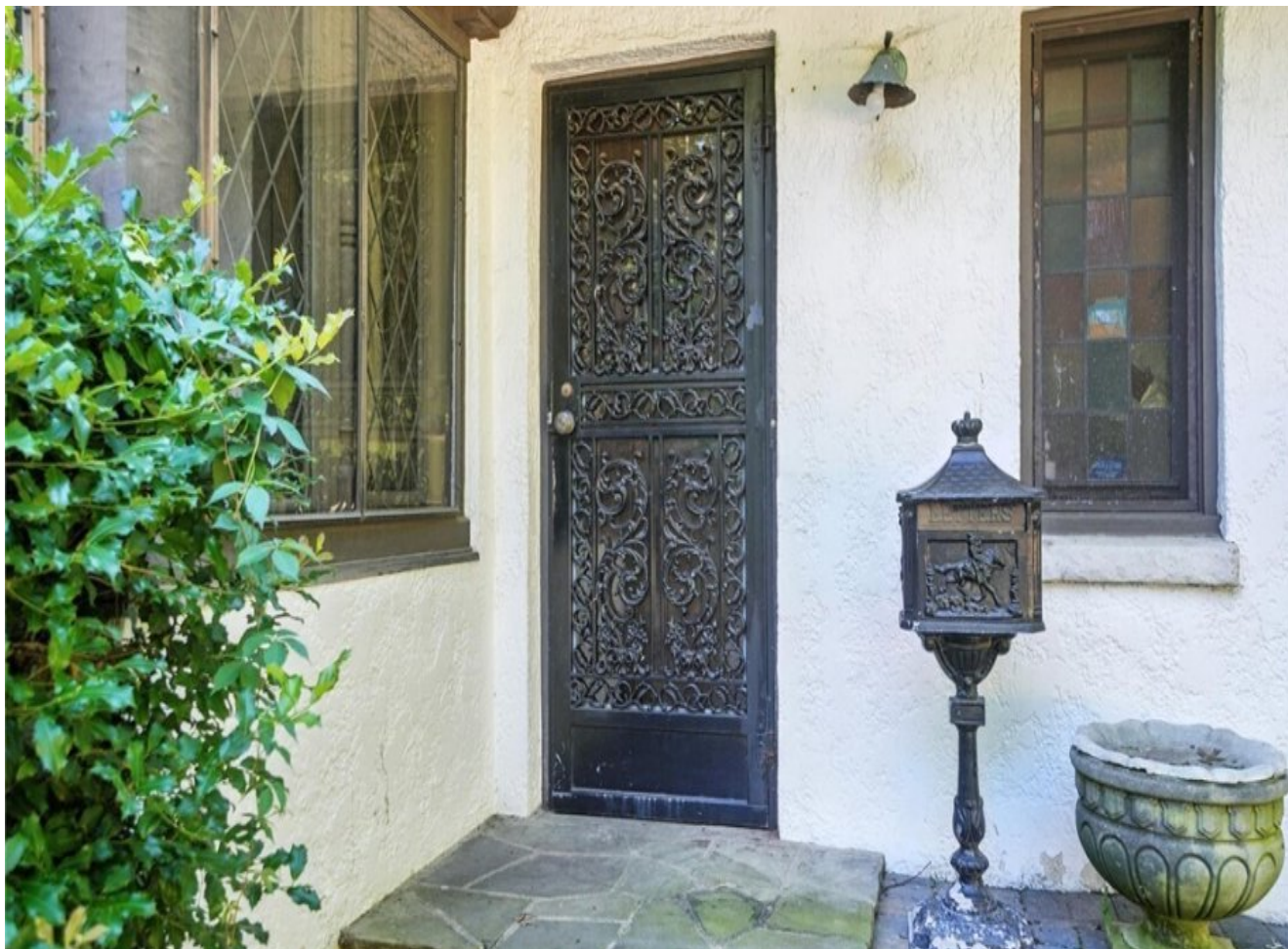
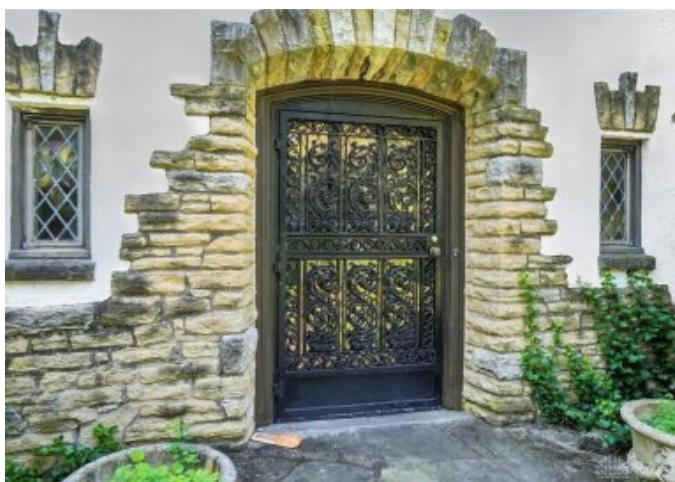
715 E Schantz Ave, Oakwood, OH 45419

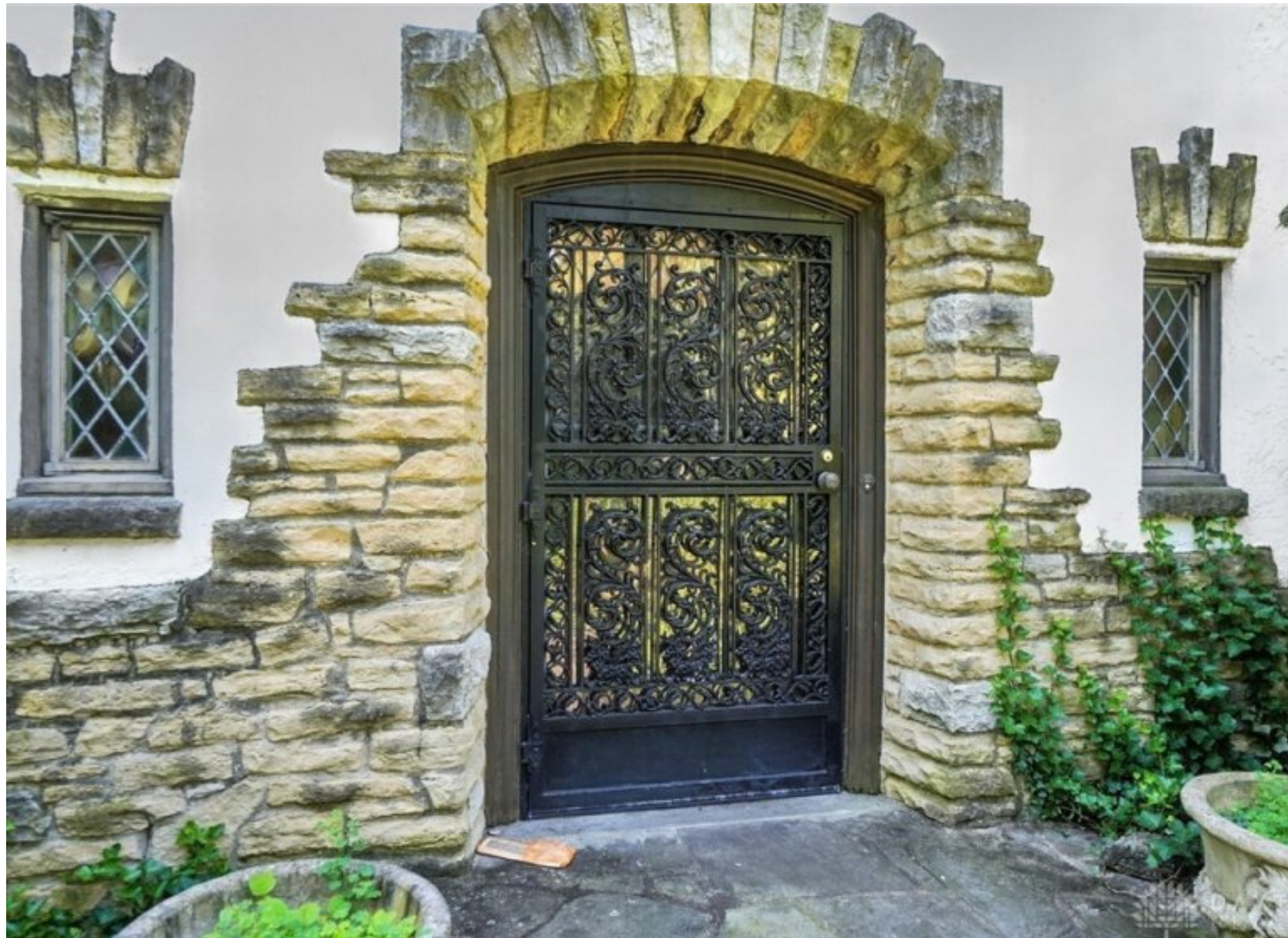
£480,000
(\$650,000)

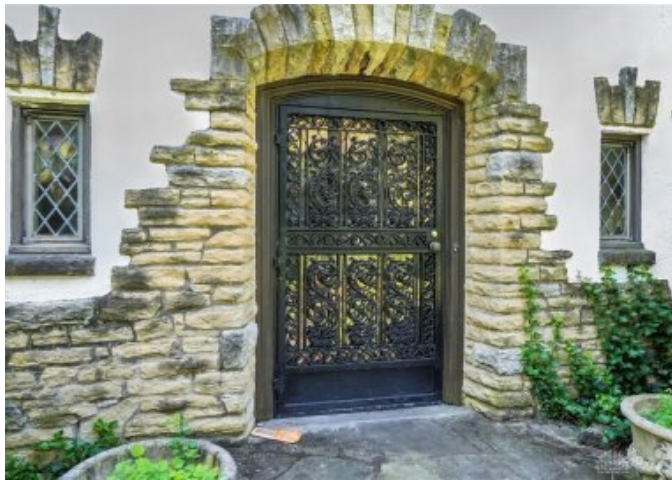
4  4 

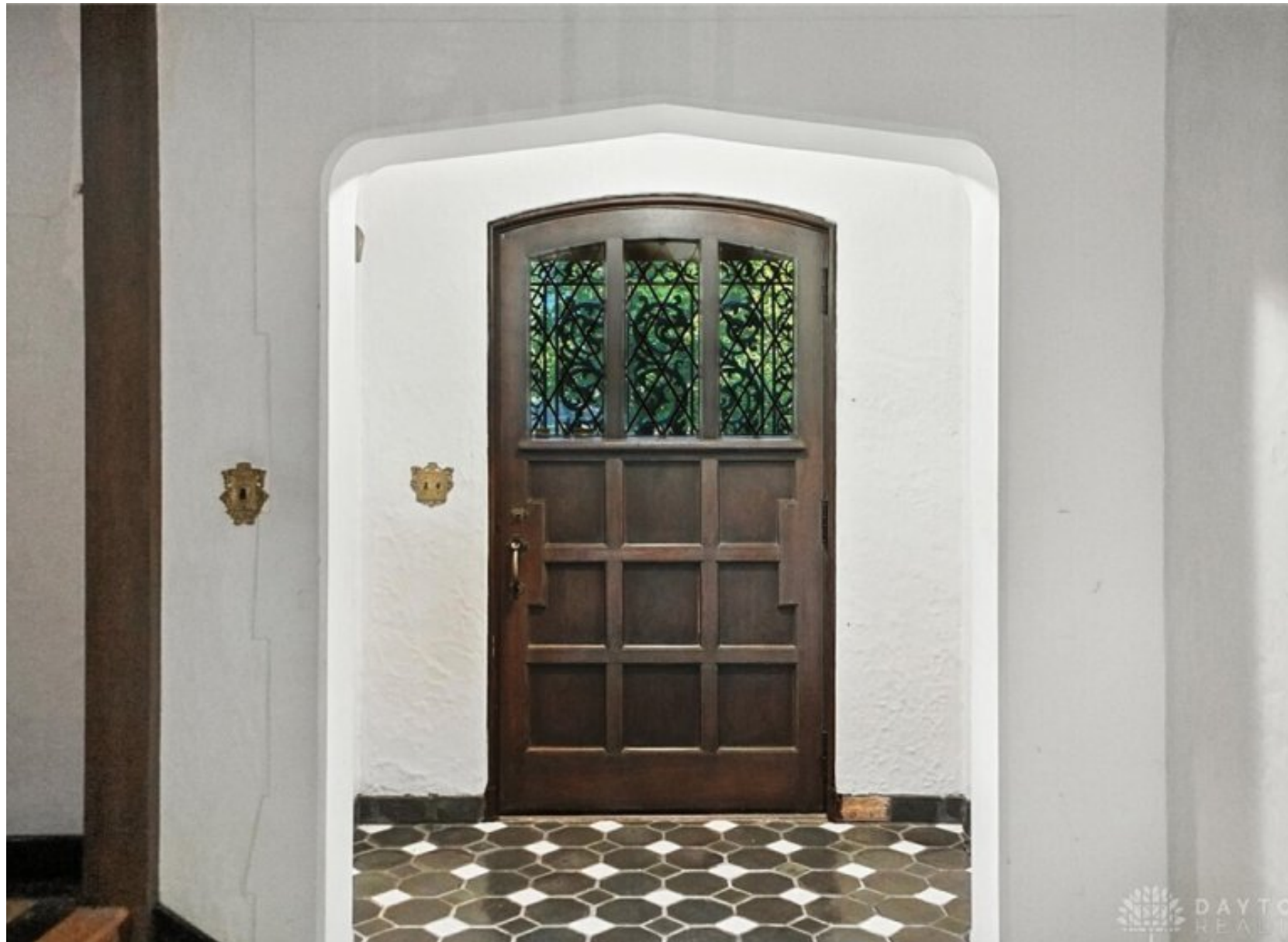
Description

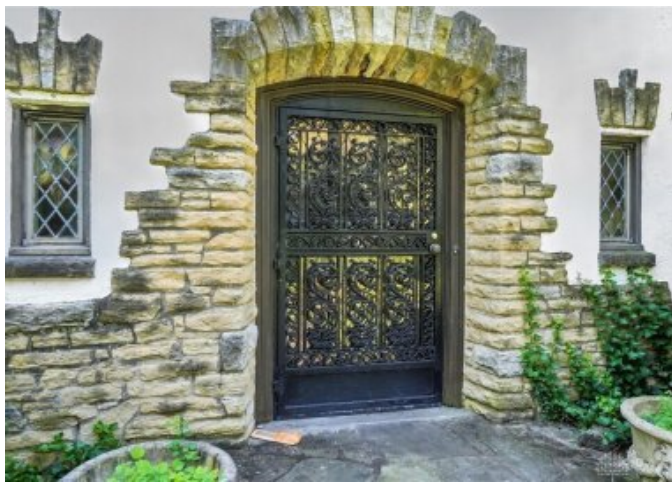
Rare opportunity to own this gorgeous estate. 1928 built home by the esteemed Schenck & Williams architectural firm. This storybook Tudor nestled on .81-acre lot owned by the same family for 60 years. From the moment you walk into the entry with its beautiful black and white tiled floors, you will fall in love with all the details. The living room is a masterpiece with stunning wood beam features in the vaulted ceiling and a showcase fireplace. Beautiful leaded glass windows throughout the home, unique French casement window and retractable screens. The sunroom sits perfectly to allow for an evening cocktail or morning coffee and perch over Schantz Avenu to view the busy activity of passersby or watching the children play in the yard. Kitchen with eat-in dining was meticulously and thoughtfully updated in the 90s, making a refresh super convenient. Dual staircases lead upstairs to oversized bedrooms; large primary suite with beautiful Rookwood tile, sperate shower and tub feature. Each room boasts large closets, linen and broom closets throughout the home and 2nd floor hall has oversized cedar closet. Two of the bedrooms share a jack n' jill bathroom and the 4th bedroom has en suite. Basement is full of possibilities. The home was well-constructed with a poured concrete foundation—it is a solid home. The garage is oversized with 3 stunning wood carriage doors. The carved wood details throughout the home, the mirrored closet doors and the current owners' carefully curated light fixtures and chandeliers—all these features would be IMPOSSIBLE to replicate in a newly built home today. The home is deserving of a family that will continue to honor its history and enjoy the comfort, well-designed layout and unique features of this home. The roof is slate and has been examined by Durable Slate, the leading slate roofer in the tri-state area. The home will be sold AS-IS.



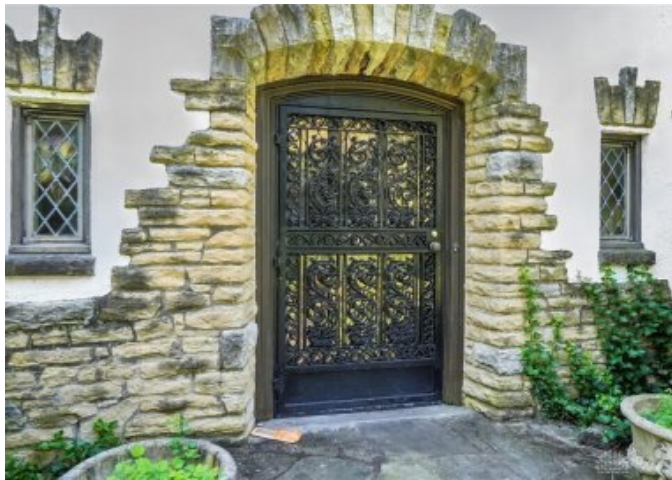




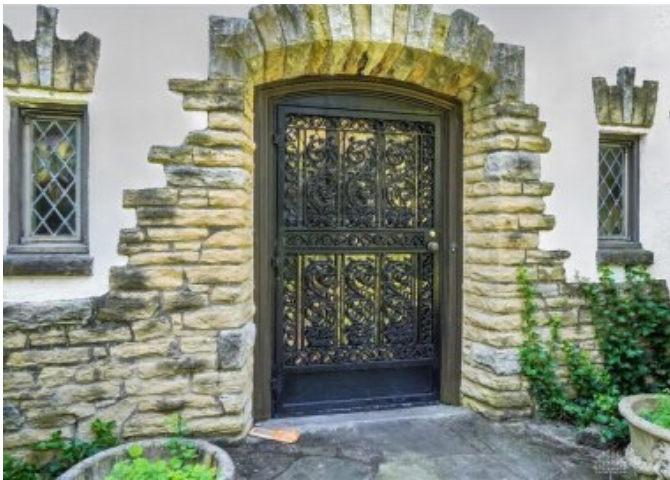




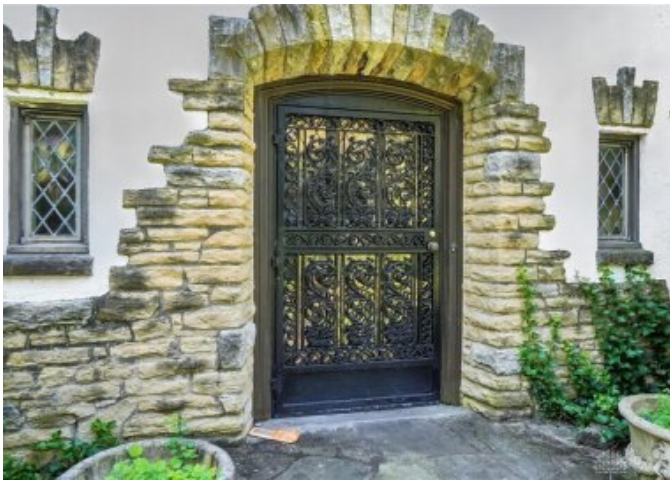








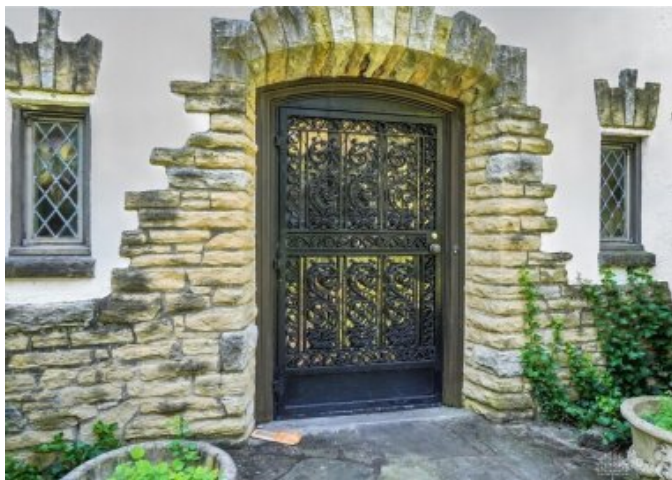




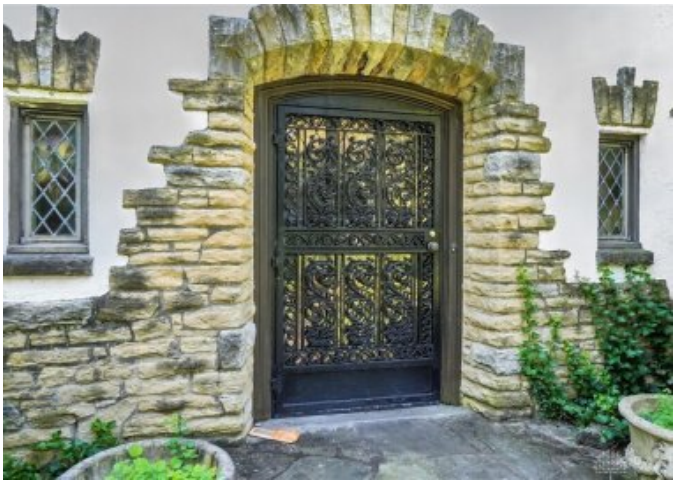








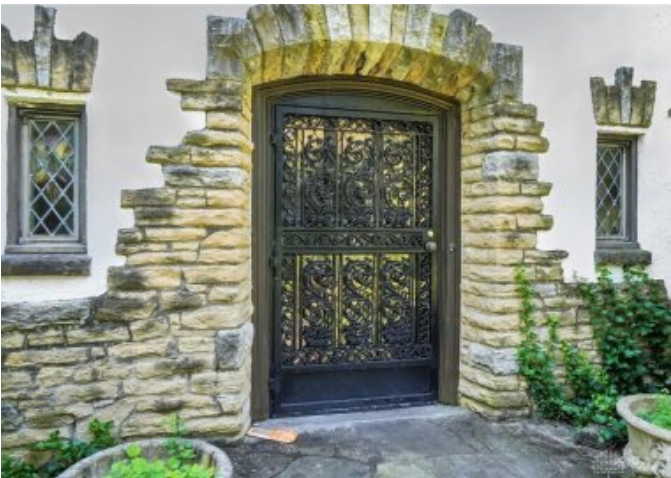




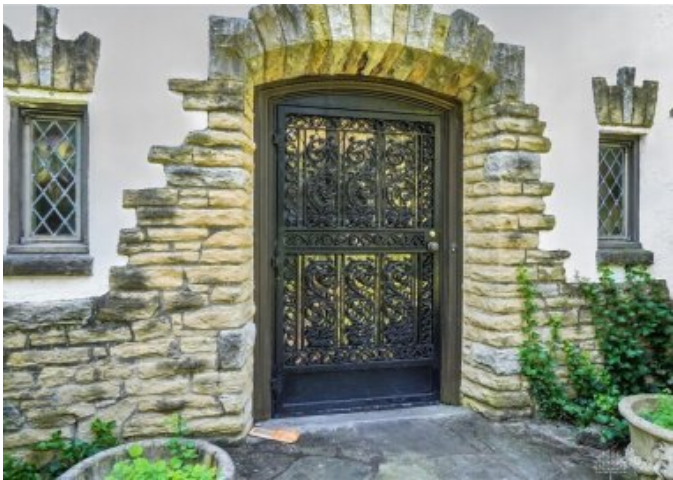




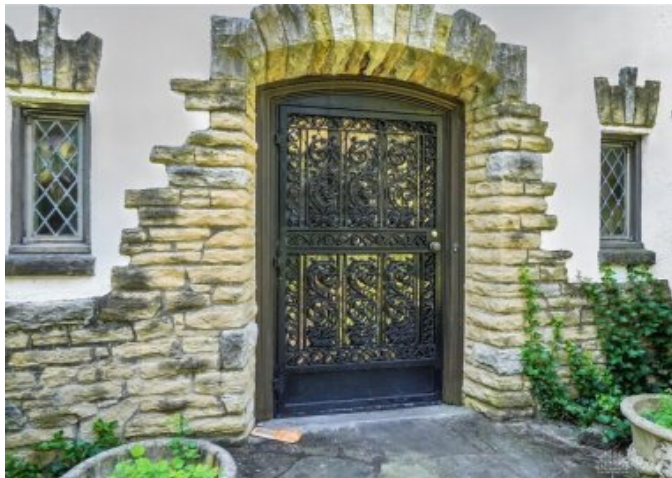




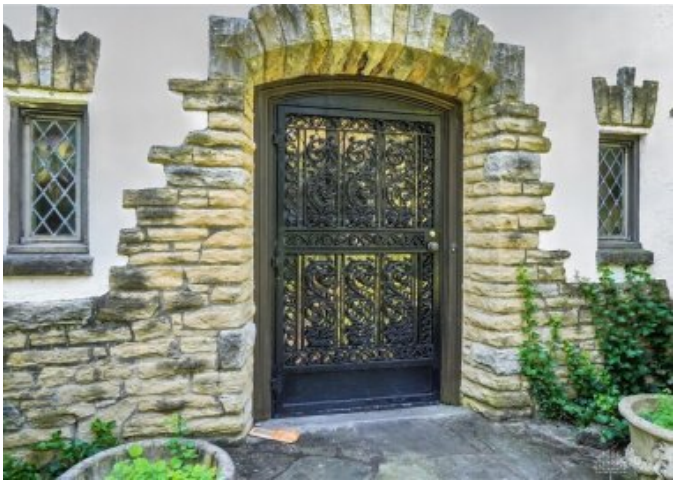








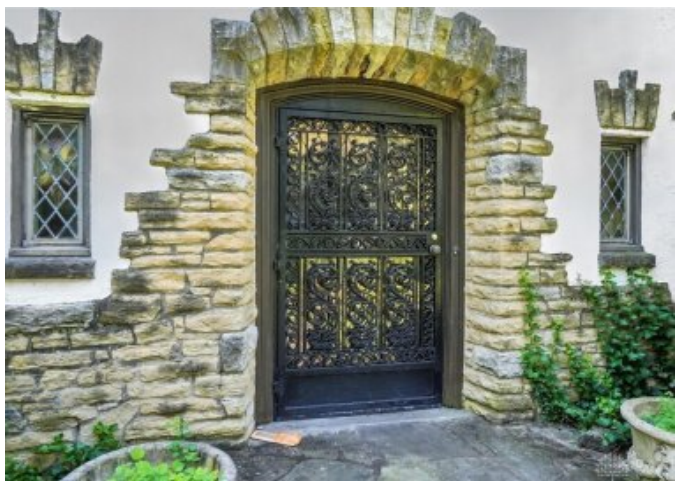














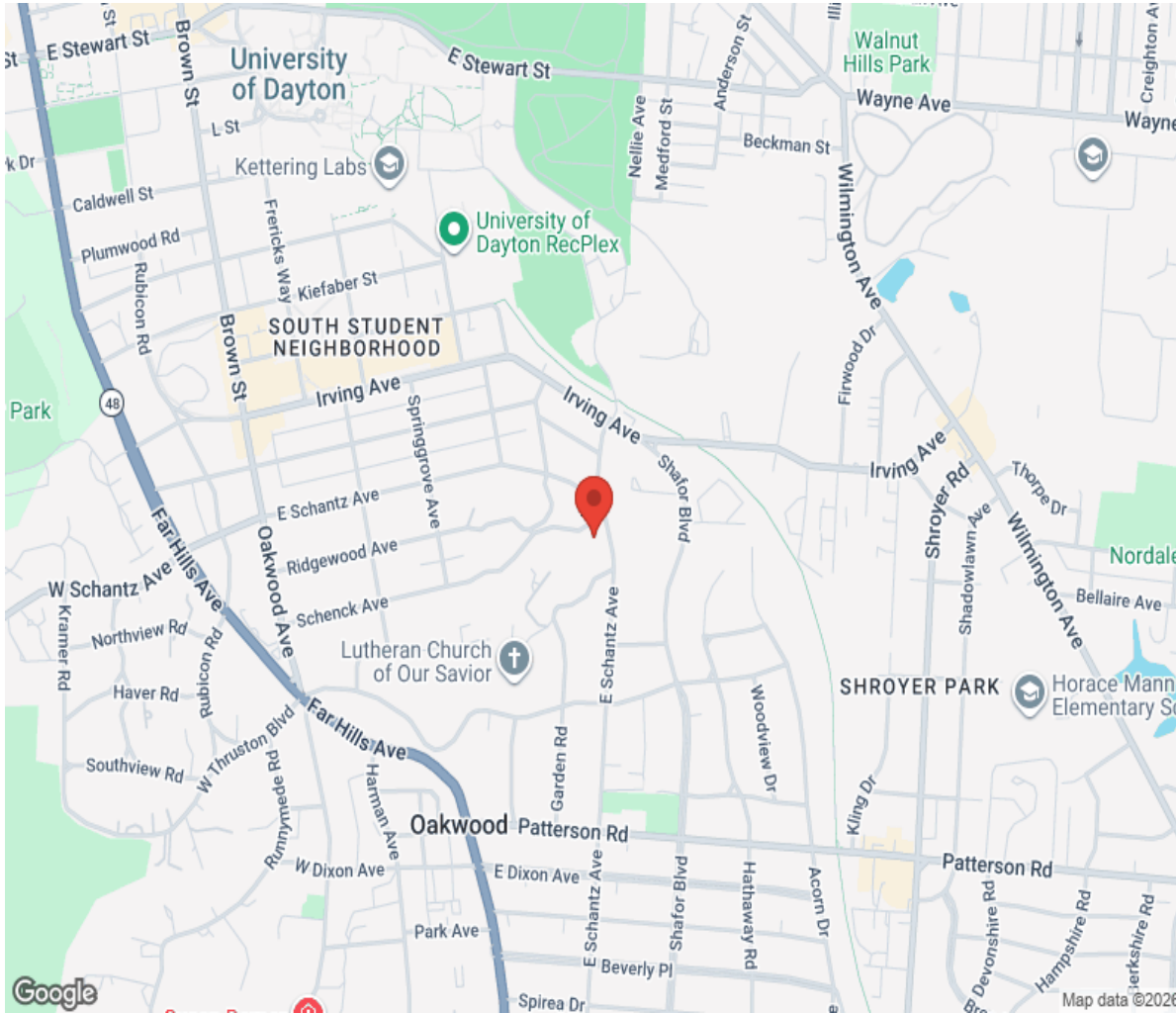








Location



Hamptons

INTERNATIONAL

+44 (0)20 8618 4551

international@hamptons.co.uk

www.hamptons-international.com