

Hamptons

INTERNATIONAL



200 S Whitfield St, Nazareth, PA 18064

3  2 

£350,000

(\$464,900)


Property details



Key features

- **Appliances: Dishwasher**
- **Appliances: Microwave**
- **Appliances: Refrigerator**
- **Appliances: Washer**
- **Basement: Full**
- **Cooling: Central A/C**
- **Exterior Description: Aluminum Siding**
- **Exterior Living Space: Deck**
- **Exterior Living Space: Patio**
- **Exterior Living Space: Porch**

Attributes

-  **Garage**
-  **Private parking**
-  **Refurbished**

200 S Whitfield St, Nazareth, PA 18064

£350,000

(\$464,900)

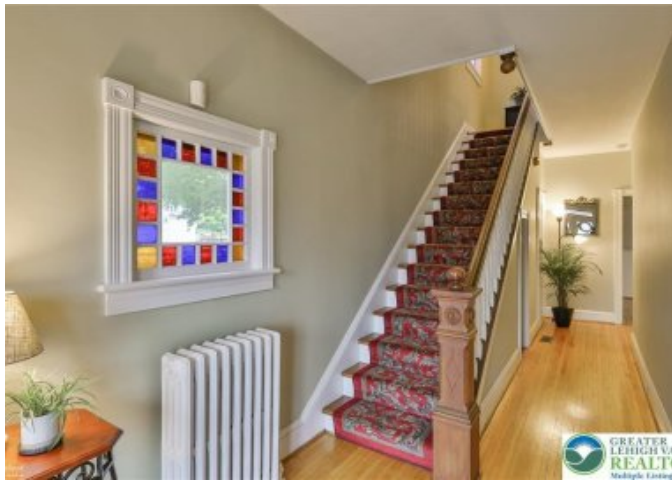
3  2 

Description

A rare opportunity to own a beautifully updated historic home in the heart of Nazareth Borough. While tax records list the build date as 1900, this residence is likely even older and full of timeless character. Set on a spacious corner double lot, the property features a welcoming covered side porch and an additional patio set to enjoy the peace and natural beauty of the surroundings. Inside, you'll find a thoughtfully updated interior, including a modern kitchen and a completely renovated main bath. Original details like high ceilings, wood moldings, and leaded and stained glass windows add to the home's classic charm. A large detached three-car garage and oversized driveway provide plenty of parking and storage. The home's roof was replaced in 2023 for added peace of mind. The walk-up third-floor attic offers excellent storage and exciting potential for future expansion. Spend your weekends strolling to locally owned businesses, exploring the farmer's market, and enjoying everything this vibrant borough has to offer. Don't miss your chance to own a piece of Nazareth's history—where old-world charm meets modern comfort.















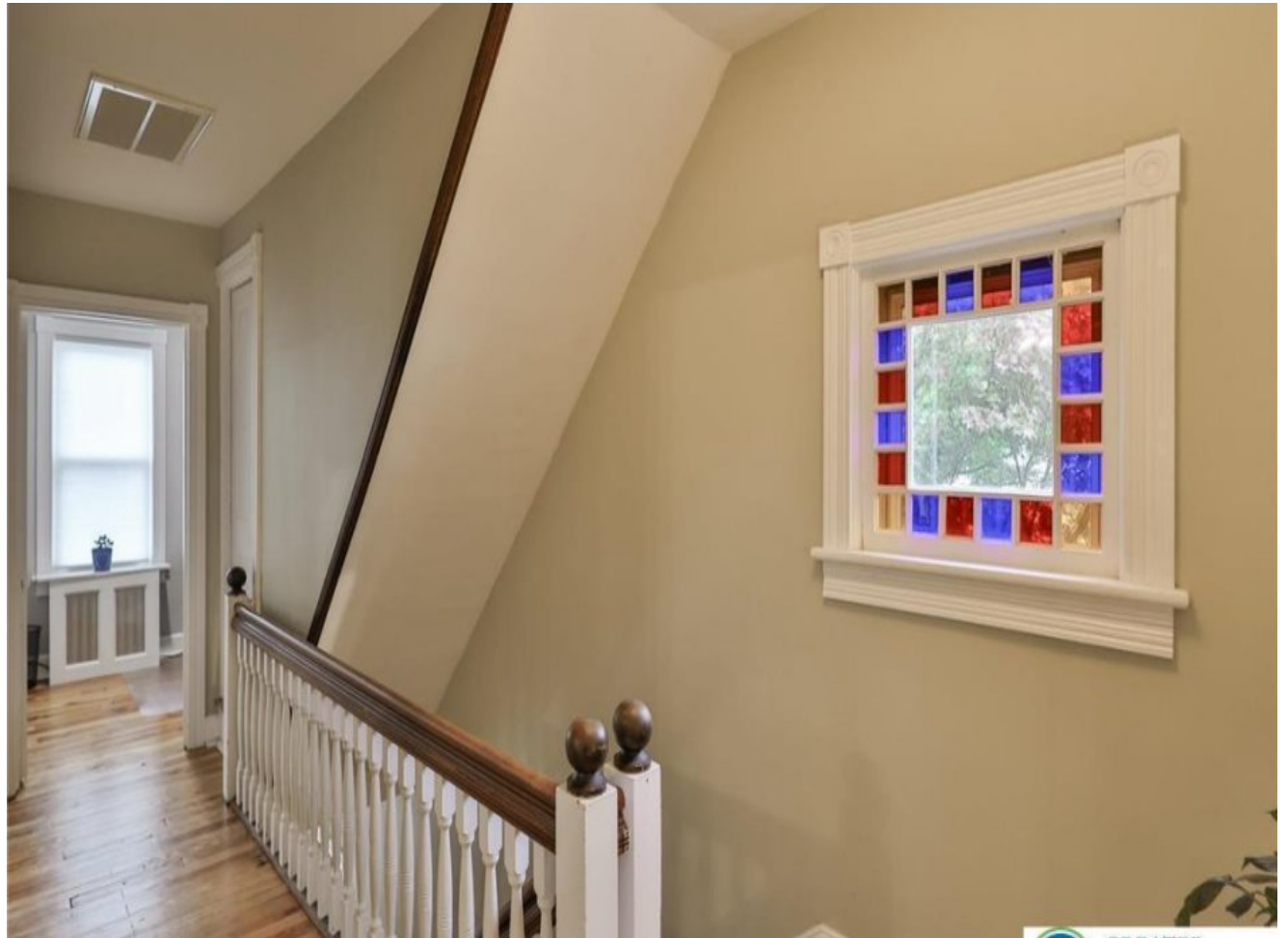
















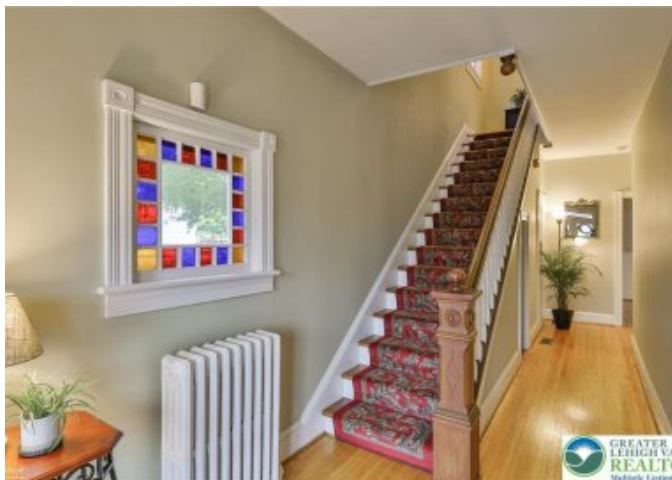






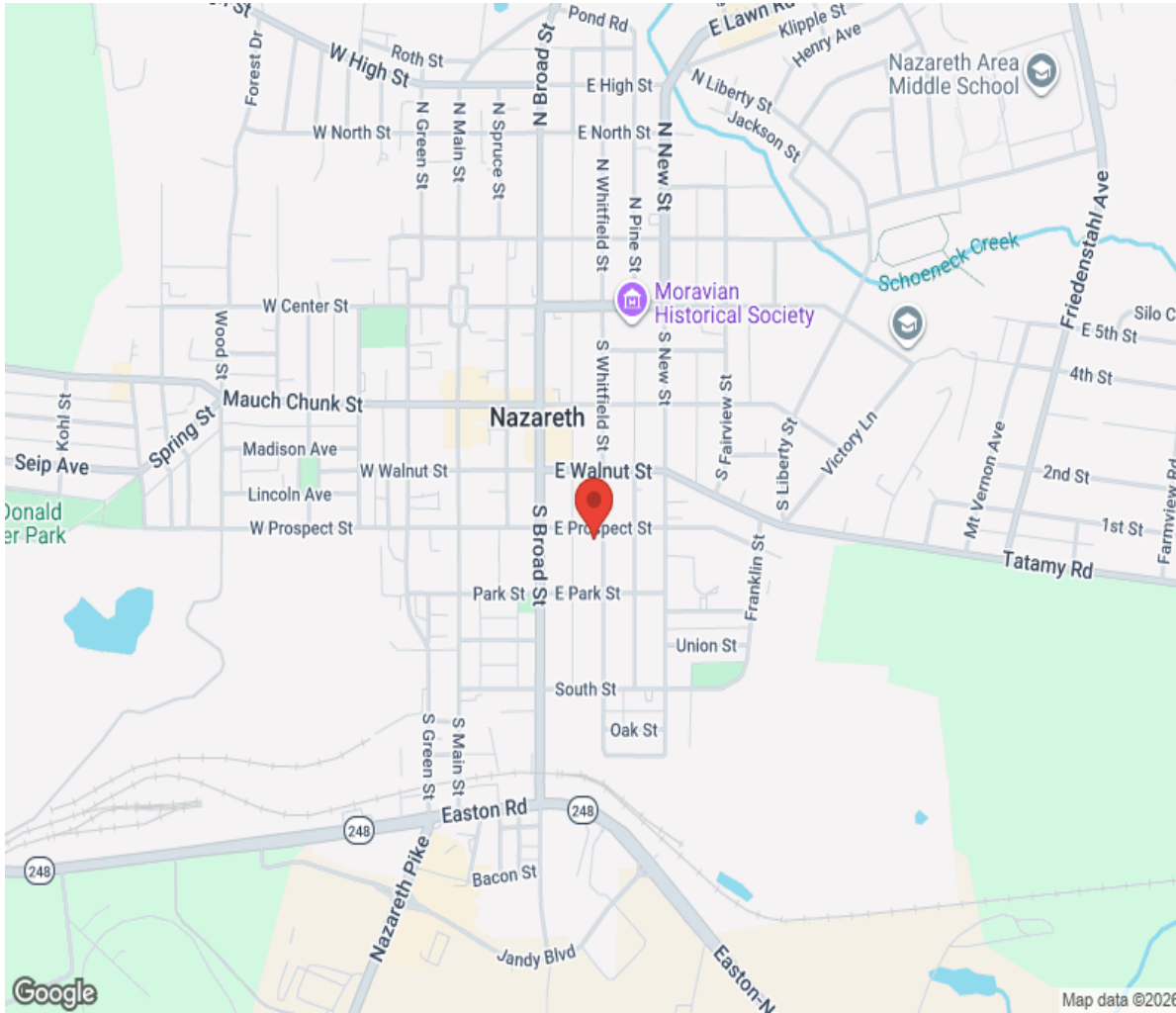








Location



Hamptons

INTERNATIONAL

+44 (0)20 8618 4551

international@hamptons.co.uk

www.hamptons-international.com