

Hamptons

INTERNATIONAL



South Africa, Gauteng, Dainfern Ridge

4  2  3 

£250,000
(R 5,200,000)


Property details






Key features

- 24 Hour Access
- 24 Hour Response
- Air Conditioner
- Balcony
- Built In Braai
- Curtain Rails

Attributes

-  Swimming pool
-  Garage
-  Garden

South Africa, Gauteng, Dainfern Ridge

4  2  3 

£250,000
(R 5,200,000)

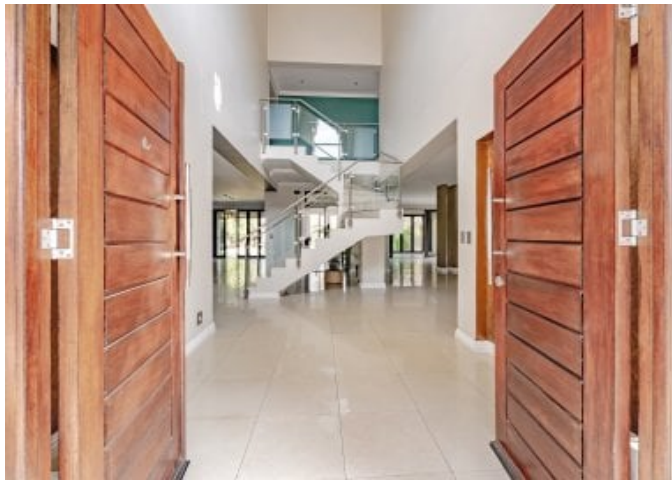
Description

4 Bedroom Home for Sale in Dainfern Ridge Modern 4 Bedroom home set in the heart of a peaceful, tree-lined section of the estate. Great for any investors as this property is currently being rented out until the end of December 2026. This remarkable four-bedroom double-storey residence stands as a testament to thoughtful design, uncompromised quality, and contemporary flair. Perfectly positioned to offer both privacy and connectivity, the home welcomes you into an environment where each space has been crafted to enhance daily living, entertain guests, and provide a sanctuary for your family. The home's sleek façade, with its clean lines and subtle architectural accents, hints at the style and warmth found within. A paved driveway leads to a double automated garage, setting a tranquil tone from the outset. Step through the grand front door into a bright foyer, where natural light pours in from feature windows, inviting you to explore more. Designed for modern lifestyles, the ground floor unfolds into interconnected, open-plan living spaces. The lounge, dining area, and kitchen flow seamlessly together, unified by high-quality tiled floors and bespoke lighting. Large sliding doors open onto the patio, erasing the boundaries between indoors and out, and filling the home with fresh air and sunlight. The lounge area is generously proportioned, offering ample space for family gatherings or quiet relaxation. At the heart of the home lies the kitchen—an entertainer's dream and a chef's delight. Outfitted with state-of-the-art appliances, sleek cabinetry, and gleaming stone countertops, it radiates both functionality and style. A central island provides the perfect spot for casual breakfasts, while a separate scullery keeps the main workspace tidy and efficient. Step out from the main living area onto the enclosed patio—a versatile, sunlit space ideal for year-round entertaining. Glass stacking doors can be fully opened to embrace the garden breeze, or shut to create a cozy, weatherproof extension of the living area. The built-in braai stands ready for legendary South African gatherings, while ample room allows for a full dining suite and a lounge set, ensuring every occasion is unforgettable. The separate family TV room offers an inviting space to unwind with a favorite series or host movie nights with friends. Upstairs, the home reveals four spacious bedrooms, each thoughtfully designed to reflect comfort and tranquility. The master suite is a sanctuary, featuring large windows with estate views, a walk-in dressing room and a luxurious en-suite bathroom with double vanities, a soaking tub, and a shower. Large balcony overlooking the garden below. The three additional bedrooms are generously sized and fitted with built-in wardrobes, offering plenty of storage. Three share a Jack and Jill bathroom. The private garden is a haven for relaxation and play, offering lush lawn, established plants, and space for children or pets to roam safely. The estate's quiet setting ensures that outdoor living feels both secluded and secure. With ample space for adding a splash pool or vegetable garden, the possibilities are endless.

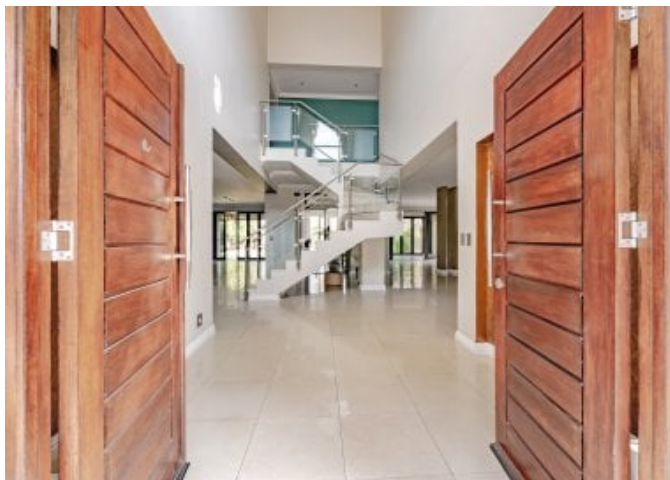
Additional Features

- Double automated garage with direct access to the house
- Solar-ready inverter system for backup power
- High-speed fibre internet connectivity
- Full security system and 24-hour estate patrols
- Guest cloakroom on the ground floor
- Domestic quarters that could double up as a cottage.

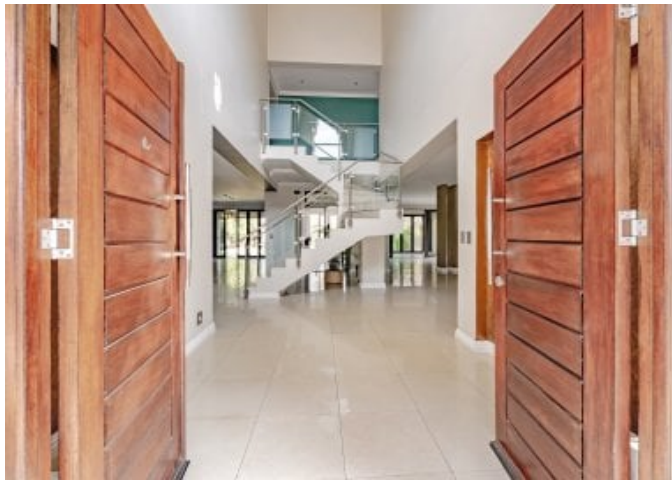
Residents of the estate benefit from a range of communal facilities, including walking and cycling paths, children's play areas, landscaped parks, and a clubhouse with swimming pool and tennis courts. The estate's controlled access and vigilant security team ensure peace of mind, making it an ideal environment for families and professionals. Set in a desirable, quiet pocket of the estate, the home enjoys proximity to top schools, shopping centers, medical facilities, and major transport routes. The position offers the best of both worlds—peaceful suburban living with easy access to urban amenities. Contact our agent for a private viewing



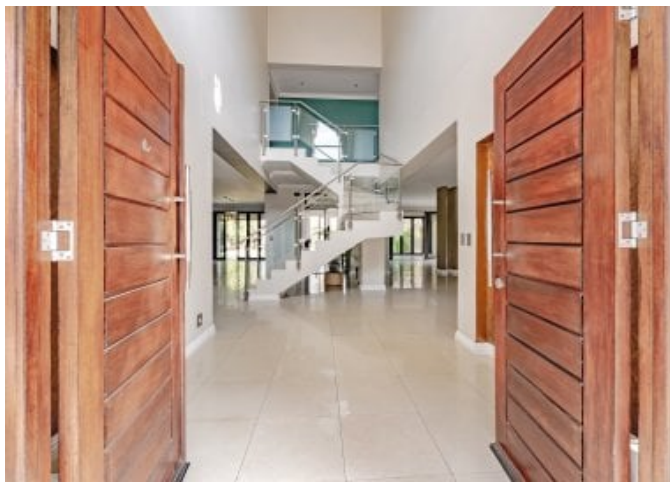




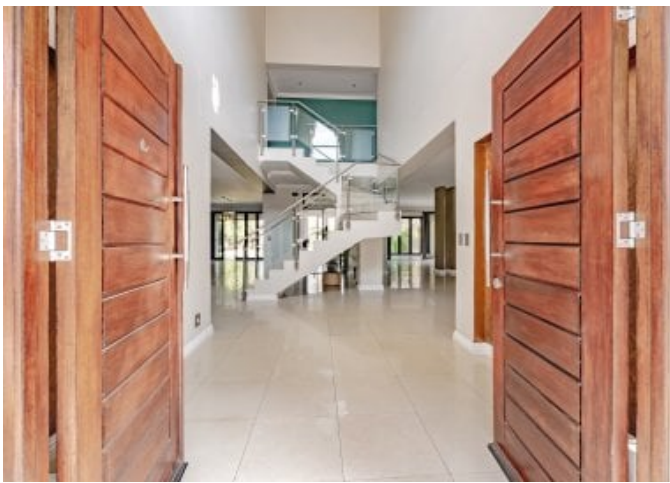




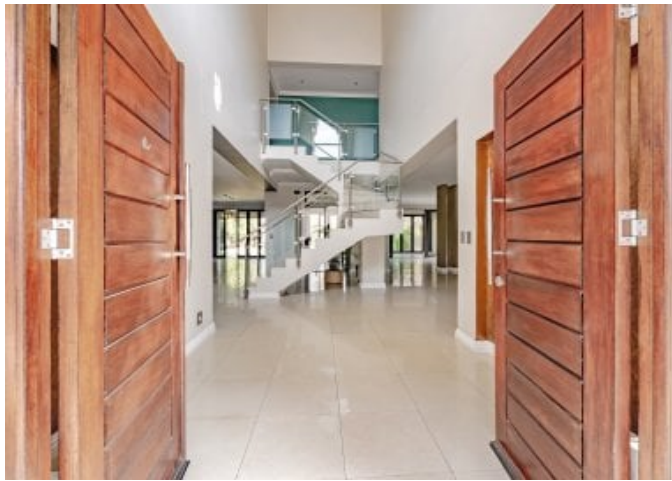




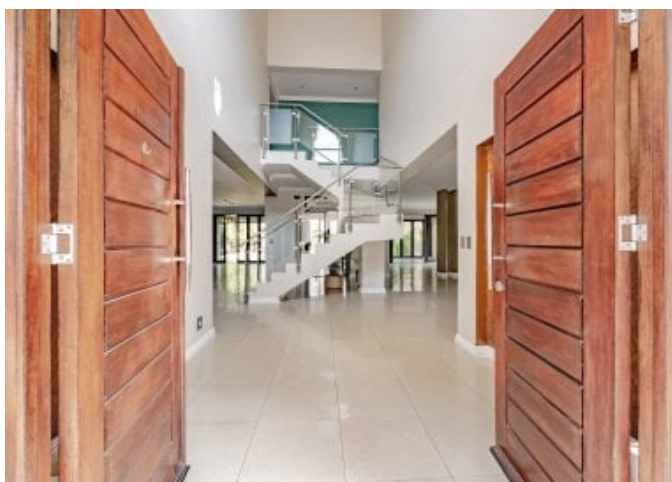
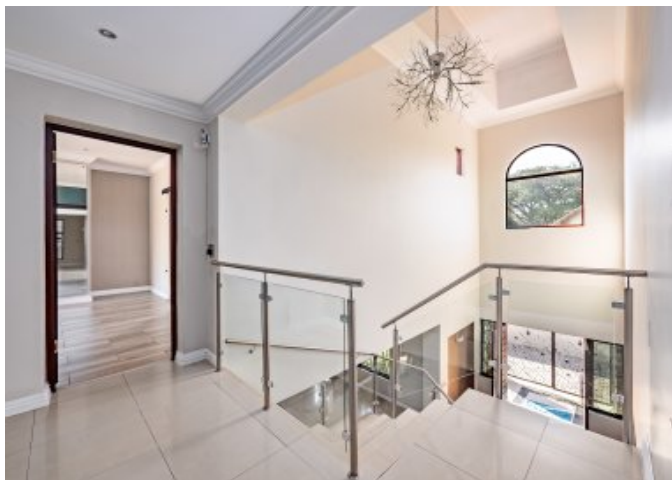




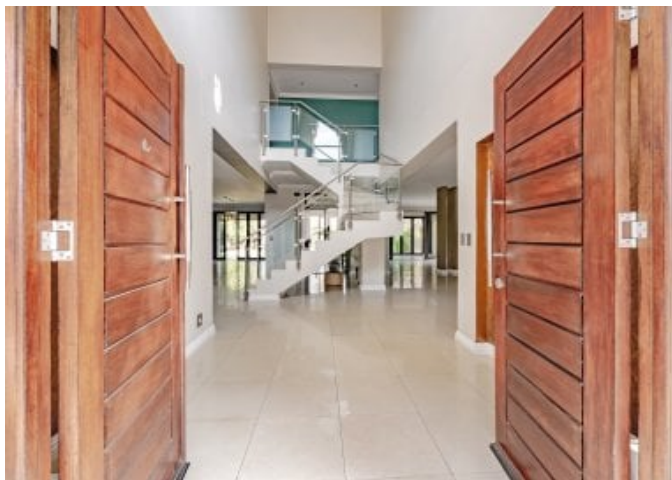






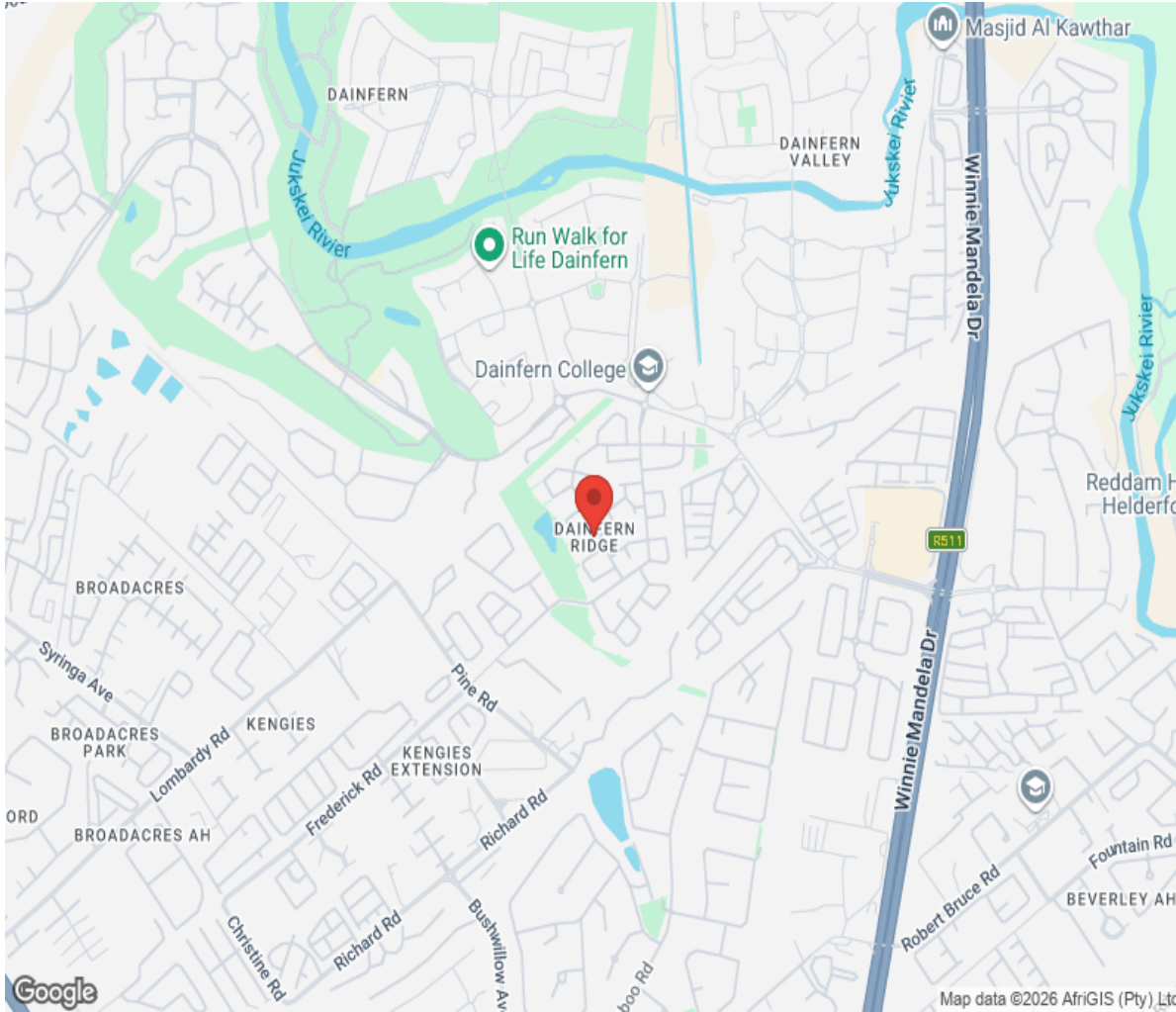








Location



Hamptons

INTERNATIONAL

+44 (0)20 8618 4551

international@hamptons.co.uk

www.hamptons-international.com