

# Hamptons

INTERNATIONAL



**Tsada, Pafos, Cyprus**

4  

**£1,850,000**

**(€2,120,000)**

## Property details



### Tsada, Pafos, Cyprus





4 

**£1,850,000**  
**(€2,120,000)**

#### Key features

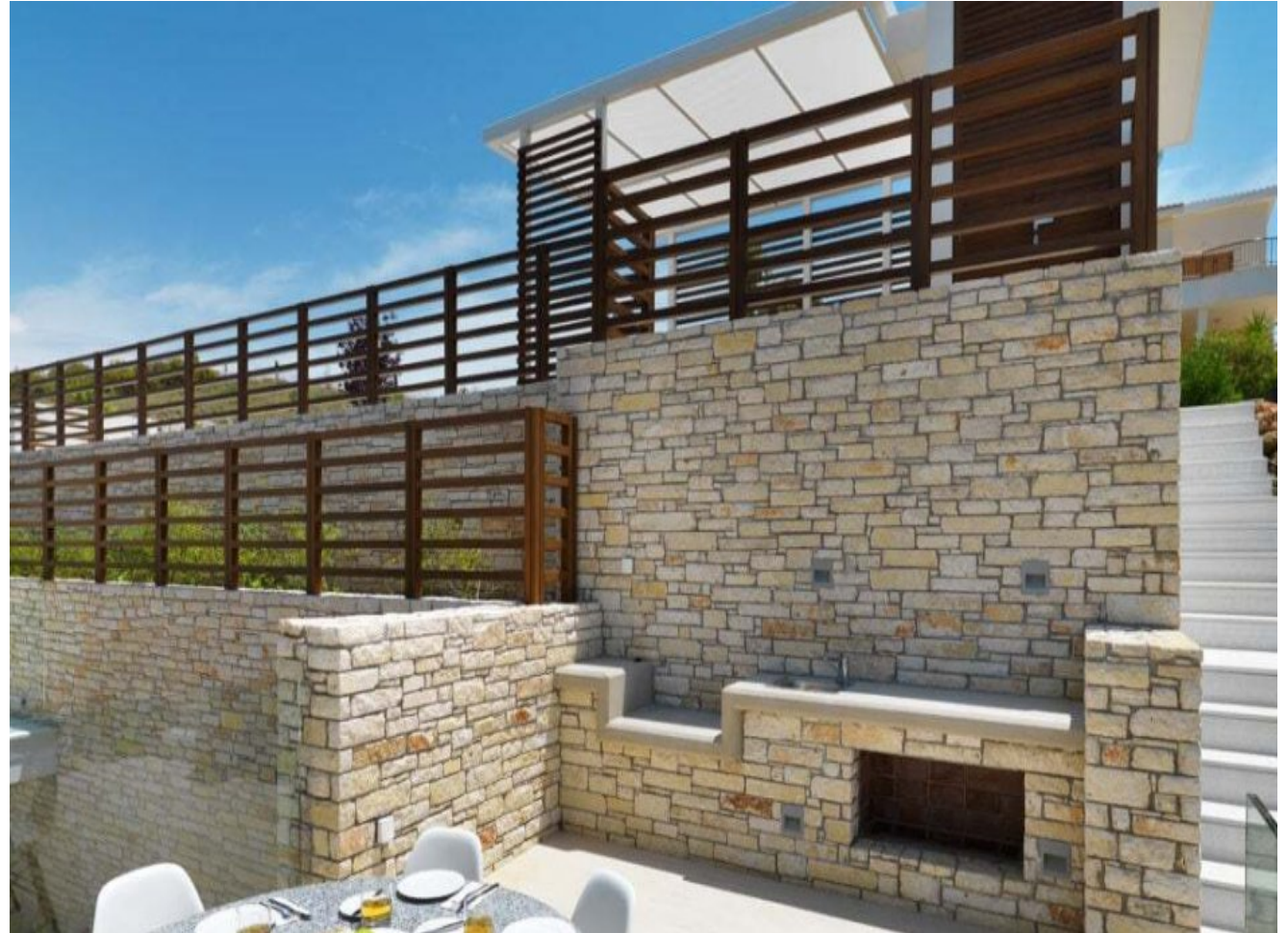
- Ultra modern design
- Mesmerising views
- VRV
- Underfloor heating
- BBQ
- Covered parking
- Private swimming pool
- Landscaped gardens
- Stunning panoramic mountain and c
- Clubhouse with restaurant, cafe and

#### Attributes

-  **Swimming pool**
-  **Near golf course**
-  **Private parking**
-  **Garden**

## Description

A striking glass bridge leads you to your front door at Amalthia, a beautifully bright villa with full-height, dual-aspect windows throughout. The spacious ground floor master suite features a stylish walk-through wardrobe, and an al fresco dining courtyard opens onto the poolside terrace. This property is part of the luxury lifestyle residential resort Minthis, which offers numerous benefits, services, and world-class facilities. These include an 18-hole championship golf course with a contemporary Clubhouse, a destination wellness Spa, sports ground, hotel-style accommodation, and a lively social square featuring a bar, restaurant, cafe, and boutique stores. Residents can also enjoy the resort's nature trails, organic garden, and playgrounds, all set within a protected Natura 2000 landscape, reflecting a commitment to sustainability and a harmonious connection with nature. Property Specifications: 3 bedrooms 4 bathrooms, 3 ensuite and 1 guest toilet 1272 square meters plot Total covered area of 243 square meters Private swimming pool Private covered parking Underfloor heating Concealed VRV system Landscaped gardens Photovoltaic panels Amenities: Clubhouse with restaurant, cafe and bar Wellness Spa 18-hole golf course Amaracus restaurant Village centre with boutique stores Sports ground with tennis academy Children's playground Hiking and Mountain bike paths Minthis is an exclusive residential retreat perched on a tranquil hilltop within a 5 million square meter Natura 2000 protected landscape, offering a harmonious blend of modernity, tradition, and nature. inspired by the local Cypriot landscape, Minthis embraces a philosophy of holistic wellbeing, connecting residents to nature while balancing adventure and discovery with peace and tranquility. The development offers a collection of bespoke Residences, Villas, and Suites, each thoughtfully designed to capture natural light and frame extraordinary views, while harnessing the cool hillside breezes. Ranging from intimate suites to expansive residences with 2 to 5 bedrooms, these homes emphasize sustainable design and long-term value.























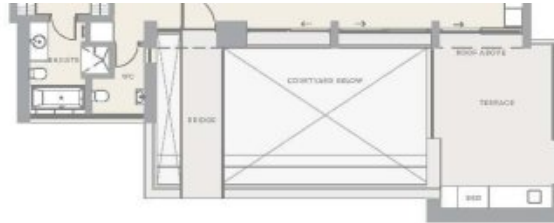






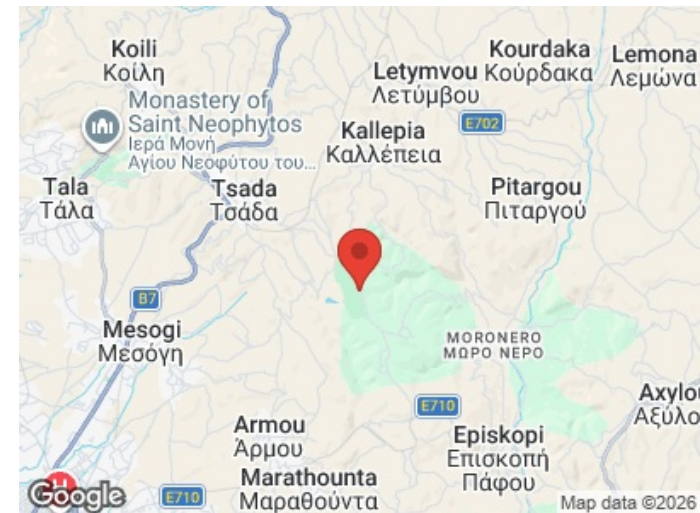
# Floor plan

---



# Location

---



**Hamptons**

INTERNATIONAL

**+44 (0)20 8618 4551**

**international@hamptons.co.uk**

**www.hamptons-international.com**