

# Hamptons

INTERNATIONAL



**76 Marcellus Ave, Woodland Park, NJ 07424**

8 🏠 4 🚗

**£630,000**

**(\$850,000)**

## Property details



### Key features

- **Garage Count: 2 Car Garage**
- **Special Program: Global Luxury**

### Attributes

 **Private parking**

**76 Marcellus Ave, Woodland Park, NJ 07424**

8  4 

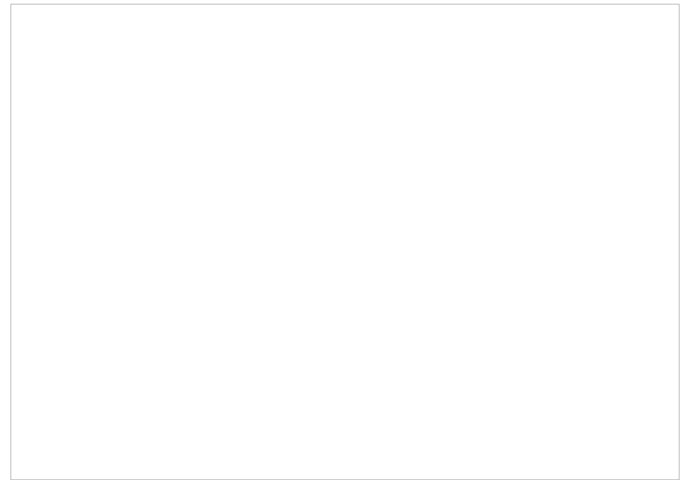
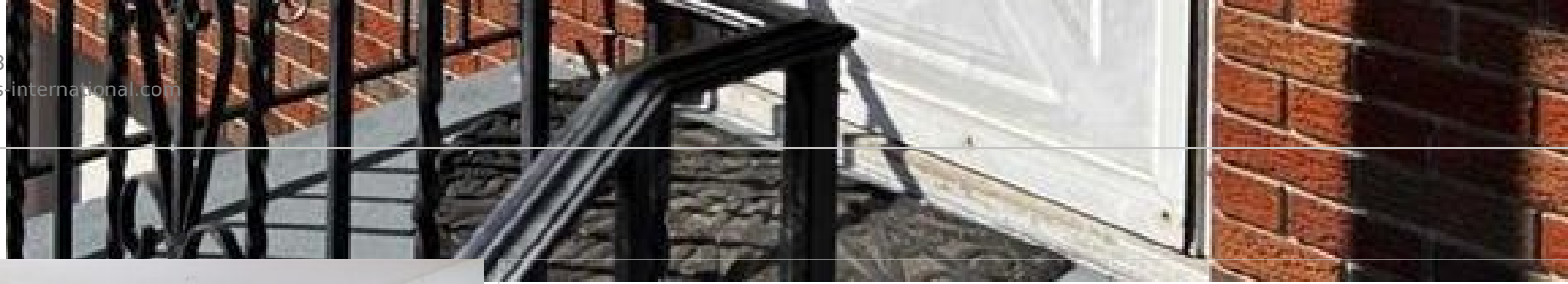
**£630,000**  
**(\$850,000)**

## Description

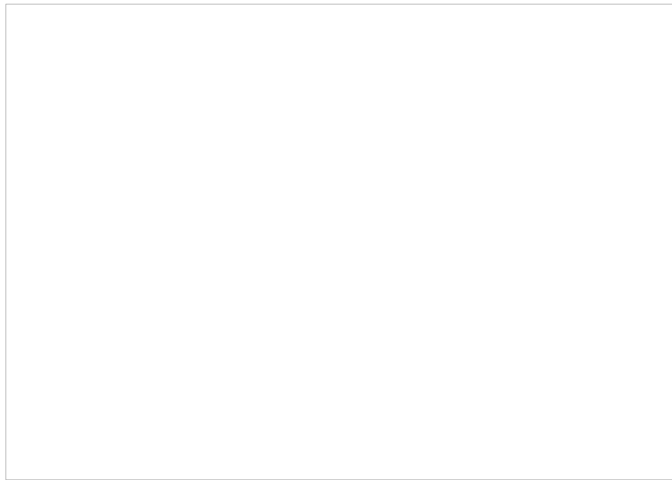
Fantastic opportunity to own a side-by-side duplex. this property each has identical unit offers 4 spacious bedrooms and 1.5 baths, with a welcoming living room, dining room, and eat-in kitchen (EIK) leading to a private deck perfect for morning coffee or evening relaxation. Beyond the interiors, the full ground-level basement provides additional space and direct access to a covered terrace and a large backyard, perfect for outdoor gatherings. Parking is hassle-free with one-car garages and driveways on each side, plus a three-car tandem driveway on the right. Sold strictly as-is, this property is conveniently located near major highways, shopping centers, and excellent schools. Whether you're looking for a great investment or a spacious home. The Duplex 2 apartments are full of potential and come with the advantage of low taxes!



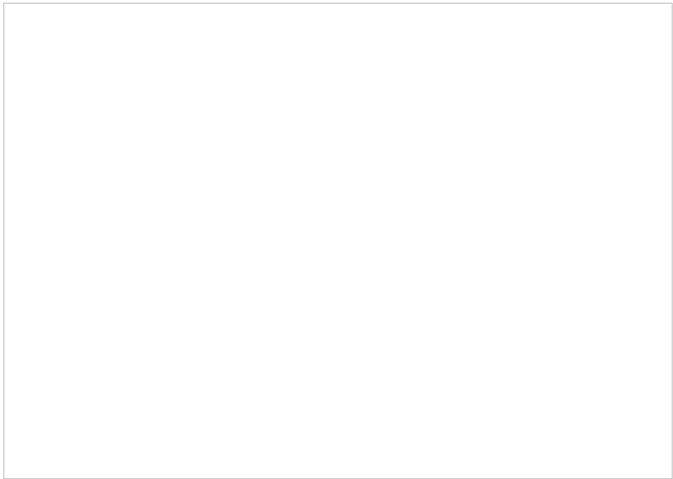




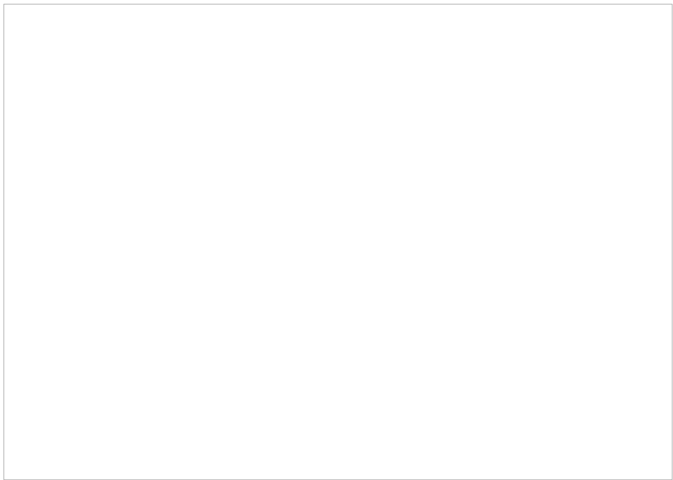




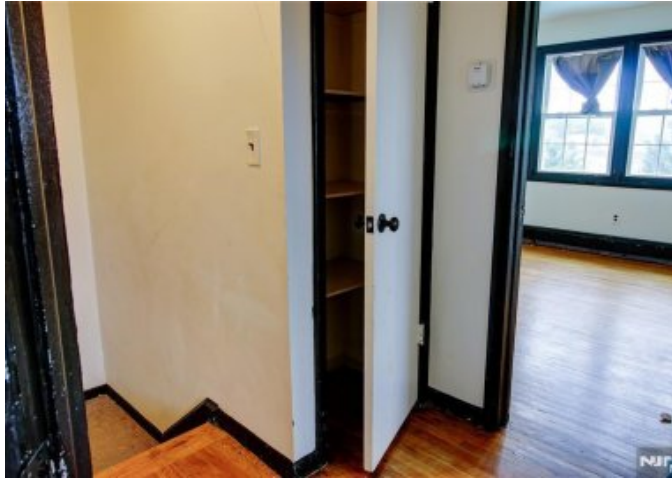














# Location

---



# Hamptons

INTERNATIONAL

**+44 (0)20 8618 4551**

**[international@hamptons.co.uk](mailto:international@hamptons.co.uk)**

**[www.hamptons-international.com](http://www.hamptons-international.com)**