

# Hamptons

INTERNATIONAL



**7703 Vasserman Pl, Chanhassen, MN 55317**

3 1/2 2 1/2

**£530,000**

**(\$700,000)**



## Property details



### Key features

- **Cooling: Central A/C**
- **Fireplace Count: 2 Fireplaces**
- **Garage Count: 2 Car Garage**
- **Heating - Fuel Type: Gas**
- **Heating Type: Forced Air**
- **Pool Description: Pool**
- **Sewer: Public**
- **Special Program: Global Luxury**
- **Water: City Water**

### Attributes

-  **Swimming pool**
-  **Garage**

**7703 Vasserman Pl, Chanhassen, MN 55317**

**£530,000**  
**(\$700,000)**

3  2 

## Description

Discover the perfect blend of comfort, style, and convenience in this elegantly designed twin home, set in the sought-after Vasserman Ridge neighborhood. Here, you'll enjoy exclusive access to a community swimming pool, neighborhood parks, and picturesque trails that wind directly to Lake Minnewashta Regional Park and connect with the Chanhassen trail system. Spend the day wandering the breathtaking Minnesota Landscape Arboretum, take advantage of nearby shopping and dining in Chanhassen, or soak in the small-town charm and lakeside beauty of Excelsior-each just minutes from your doorstep. The main level offers a spacious open floor plan featuring a bright sunroom, a dedicated office, and a generous 22'x14' three-season porch with new windows, showcasing stunning views of the private, tree-lined lot-perfect for bird watching and enjoying wildlife. The walkout lower level includes two additional bedrooms, a family room with wet bar, and a versatile space ideal for exercise or hobbies. Throughout the home, you'll find exquisite custom built-ins paired with high-end custom window treatments, adding both elegance and functionality. An abundance of storage space is also available in the lower level. Step outside to enjoy the new paver patio and walkway, enhancing the home's charm and inviting outdoor living spaces. Updates include a new furnace and AC in 2019, new driveway in 2025, and a quiet new belt-driven garage door opener with Bluetooth capability. The location is outstanding, with easy access to shopping, dining, and miles of walking and biking trails. Offering convenience, style, and move-in-ready appeal, this property is truly a rare find! See links in supplements for photo and 3D virtual tours.































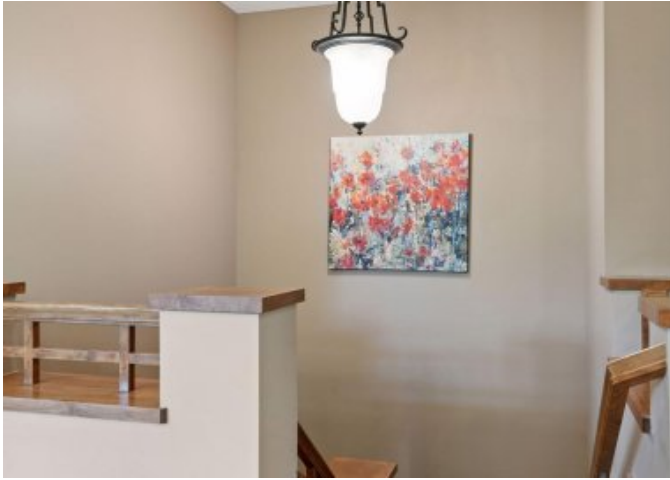




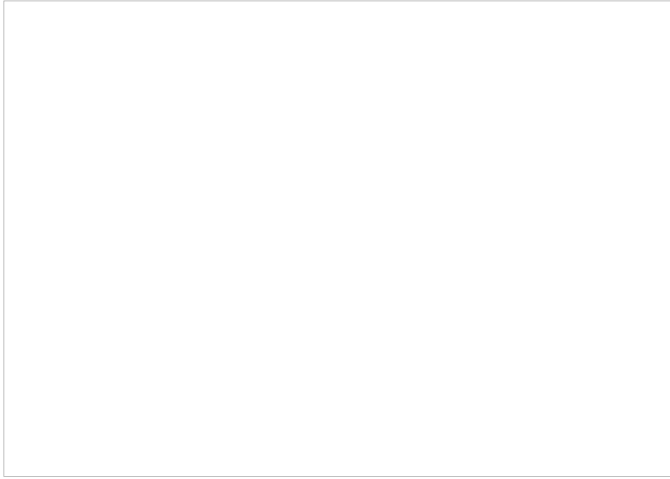
































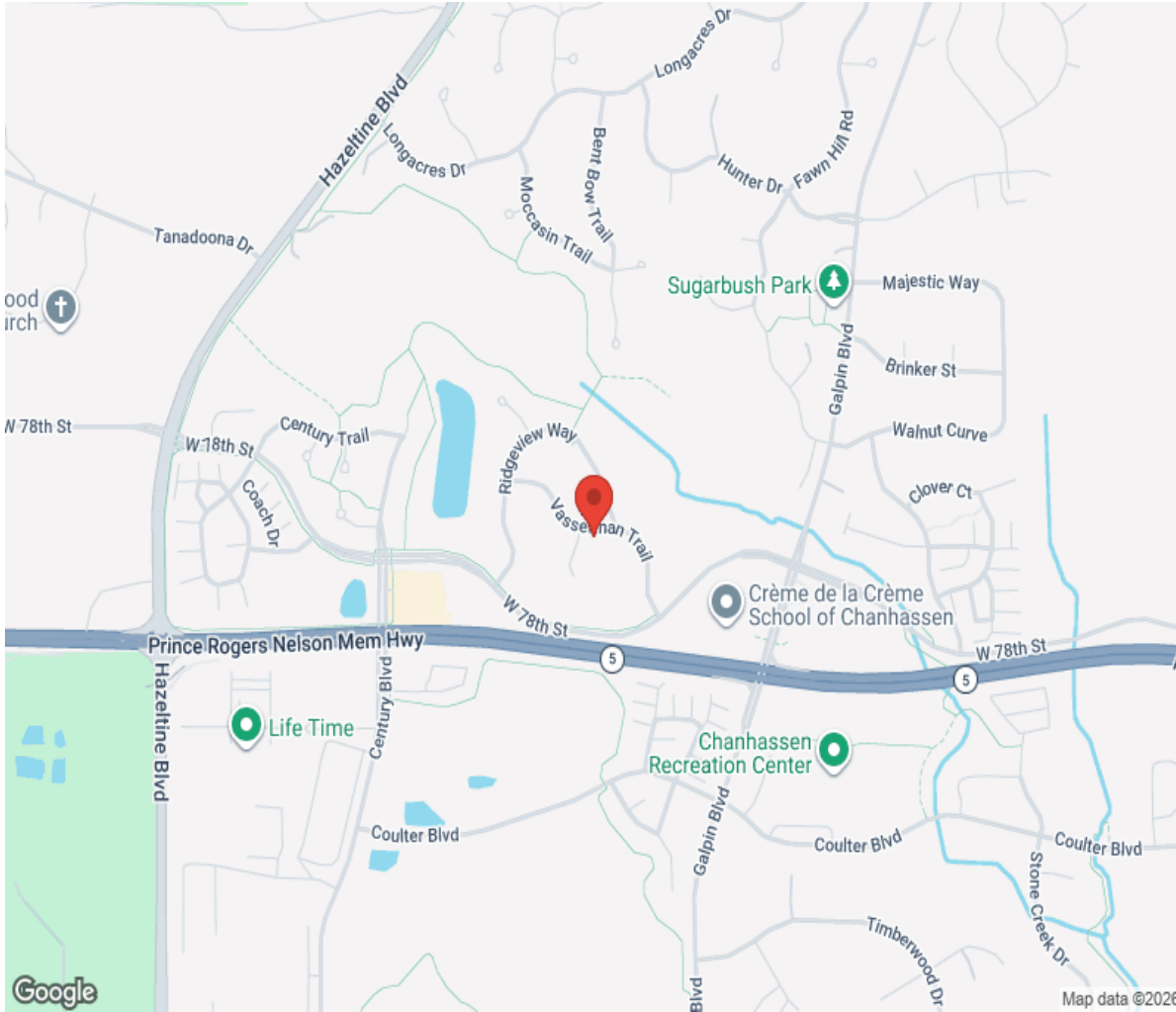






# Location

---



# Hamptons

INTERNATIONAL

**+44 (0)20 8618 4551**

**[international@hamptons.co.uk](mailto:international@hamptons.co.uk)**

**[www.hamptons-international.com](http://www.hamptons-international.com)**