

Hamptons

INTERNATIONAL



106 Wheatsbury Dr, Cary, NC 27513

4  4 

£820,000
(\$1,100,000)

Property details



Key features

- **Age: 21-30 Years Old**
- **Basement: Finished**
- **Basement: Full**
- **Fireplace Count: 1 Fireplace**
- **Garage Count: 2 Car Garage**
- **Sewer: Public**
- **Special Program: Global Luxury**

Attributes

-  **Garage**
-  **Gym**
-  **Garden**

106 Wheatsbury Dr, Cary, NC 27513

4 🏠 4 🚗

£820,000
(\$1,100,000)

Description

Discover this custom one-of-a-kind architectural masterpiece in the heart of Cary. Inspired by the timeless vision of Frank Lloyd Wright, this Prairie Style 4-bedroom, 3.5-bath home seamlessly integrates natural materials, clean lines, and expansive windows that bring the outdoors in. Step inside to find a spacious layout featuring an inviting living area anchored by a striking double-sided fireplace, ideal for gatherings or quiet evenings surrounded by nature. The dedicated office with etched French glass doors, currently being used as a relaxing music lovers retreat, is adorned with floor to ceiling built-in Maple shelves that connect with the coffered ceiling. The well-appointed kitchen has granite countertops, large island, new gas 36-inch cooktop with dedicated exhaust, and a Bosch dishwasher that blends seamlessly with the surrounding cabinets. Built in breakfast nook. Recently installed natural Maple hardwood floors are located throughout the main level of the home. Open Staircase with curved wood railing and solid wrought iron balusters leads to three bedrooms upstairs. A Romeo and Juliet Balcony (a signature FLW detail) overlooks the Living Room below. The Primary Bedroom has a private balcony that has a peaceful view of the lush backyard, there is a huge walk-in closet and an ensuite bathroom. The jetted waterfall tub and separate shower with six shower heads will offer a spa like experience. Two large secondary bedrooms have lots of windows, ample storage and a connected bathroom. The multigenerational layout of the home allows for lots of privacy and space for all. Enjoy television time in the large bonus room positioned adjacent to the kitchen, take in the views of nature on the screened porch, toast marshmallows in the fire pit located on the patio or enjoy unforgettable evenings under the stars. The large daylight basement offers endless potential: home theater, gym, recreation room, studio, craft room, workshop and so much more. 180 Gallon Built-In Aquarium with cabinetry and all of the equipment conveys. Home features and improvements include: updated paint, recent Maple hardwood floors and carpet in basement, roof replaced August 2022, Anderson double-paned Frank Lloyd Wright windows and French doors with art glass panels, integrated speaker system throughout home, new 5 burner gas cooktop, tankless hot water heater, newly epoxied garage floor, central vacuum, large under porch garden supply storage, Grohe plumbing fixtures, updated landscaping (including Cherry, Maple and Crepe Myrtle Trees) and a rock garden. Conveniently located in Cary's most desirable location: Town of Cary trail system, Taylor Family YMCA, Bond Park and Fresh Market are so close that you can get there without a car. RDU Airport, RTP, Downtown Raleigh, Cary Downtown Park, Jordan Lake, 540 and 64 are a heartbeat away.



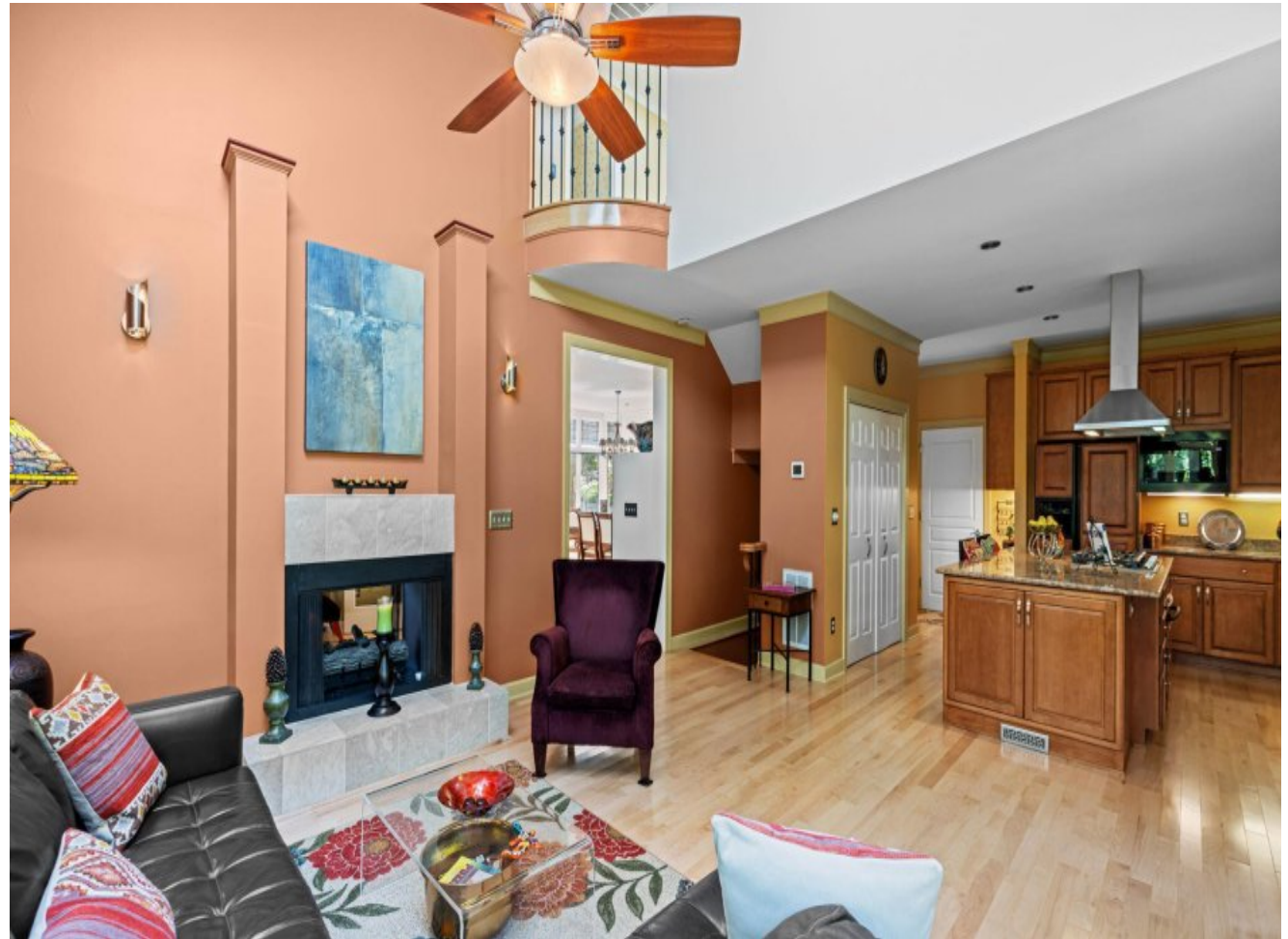






























TMLS

























TMLS





TMLS







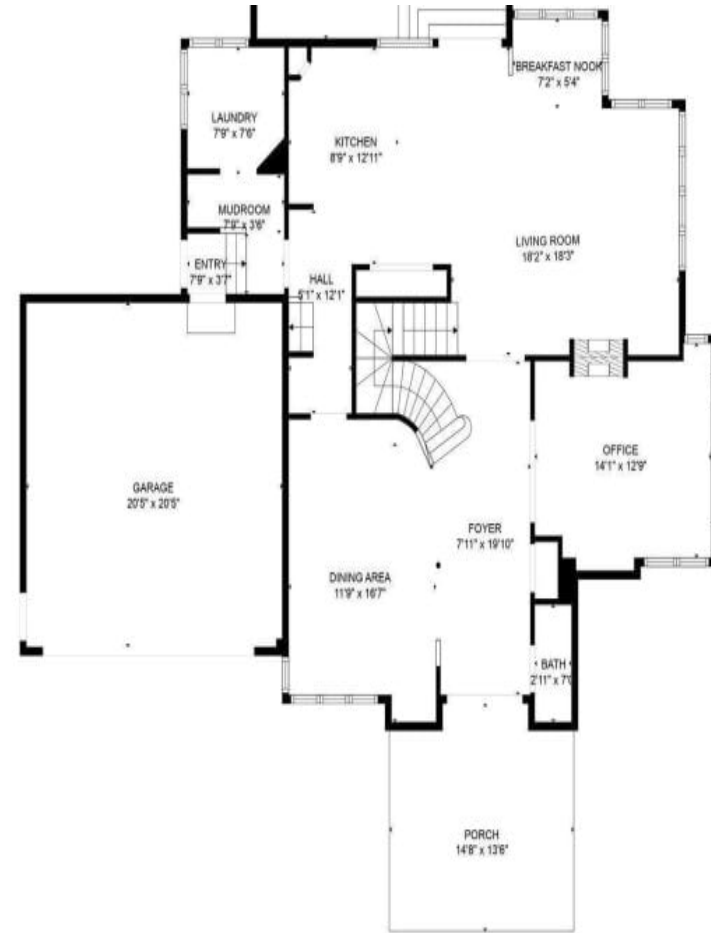


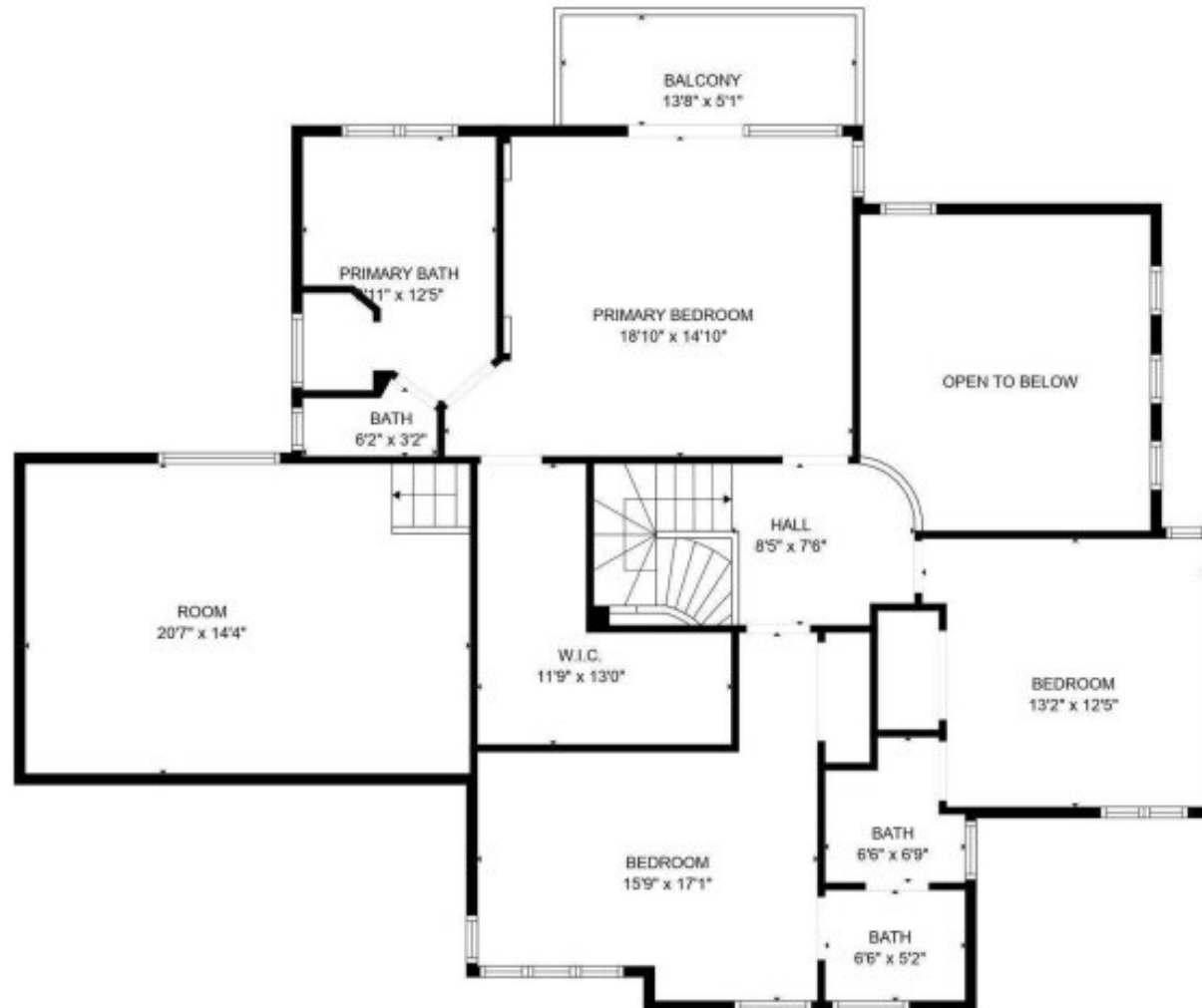
TMLS





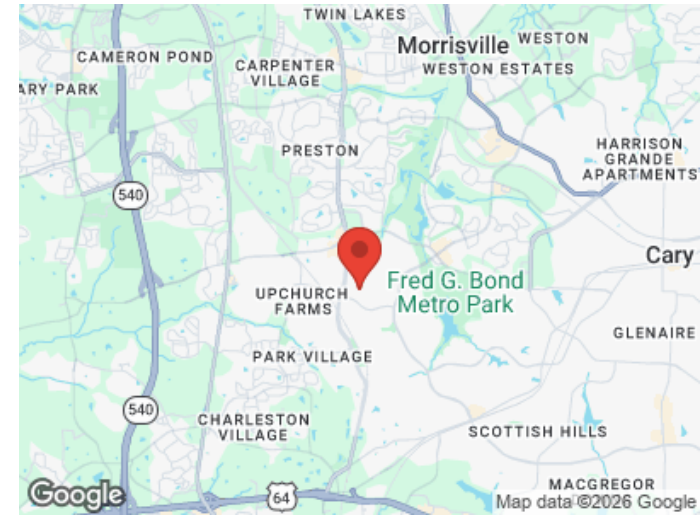
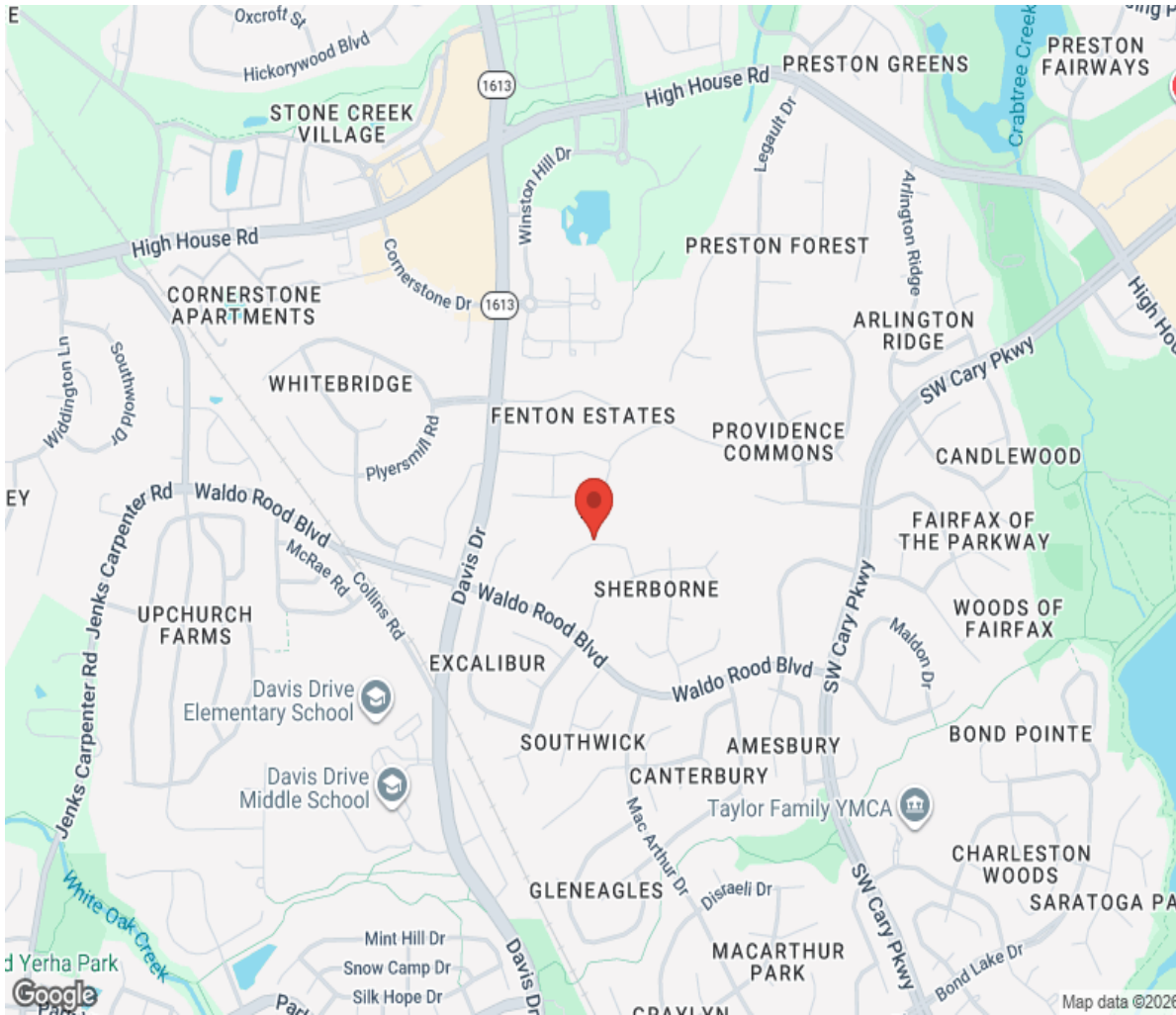
TMLS





Total GLA: 2799 sq. ft | Total: 5494 sq. ft
Floor 1 - Below grade: 1295 sq. ft (Excluded areas 454 sq. ft)
Floor 2: 1368 sq. ft (Excluded areas 853 sq. ft)
Floor 3: 1431 sq. ft (Excluded areas 297 sq. ft)

Location



Hamptons

INTERNATIONAL

+44 (0)20 8618 4551

international@hamptons.co.uk

www.hamptons-international.com