

# Hamptons

INTERNATIONAL



**3125 Emerald Isle Dr, Glendale, CA 91206**

4 🏠 3 🏠

**£2,010,000**

**(\$2,699,000)**

## Property details



### Key features

- **Garage Count: 2 Car Garage**
- **Age: 41-50 Years Old**
- **Sewer: Public**

### Attributes

-  **Swimming pool**
-  **Garage**

**3125 Emerald Isle Dr, Glendale, CA 91206**

**£2,010,000**  
**(\$2,699,000)**

4  3 

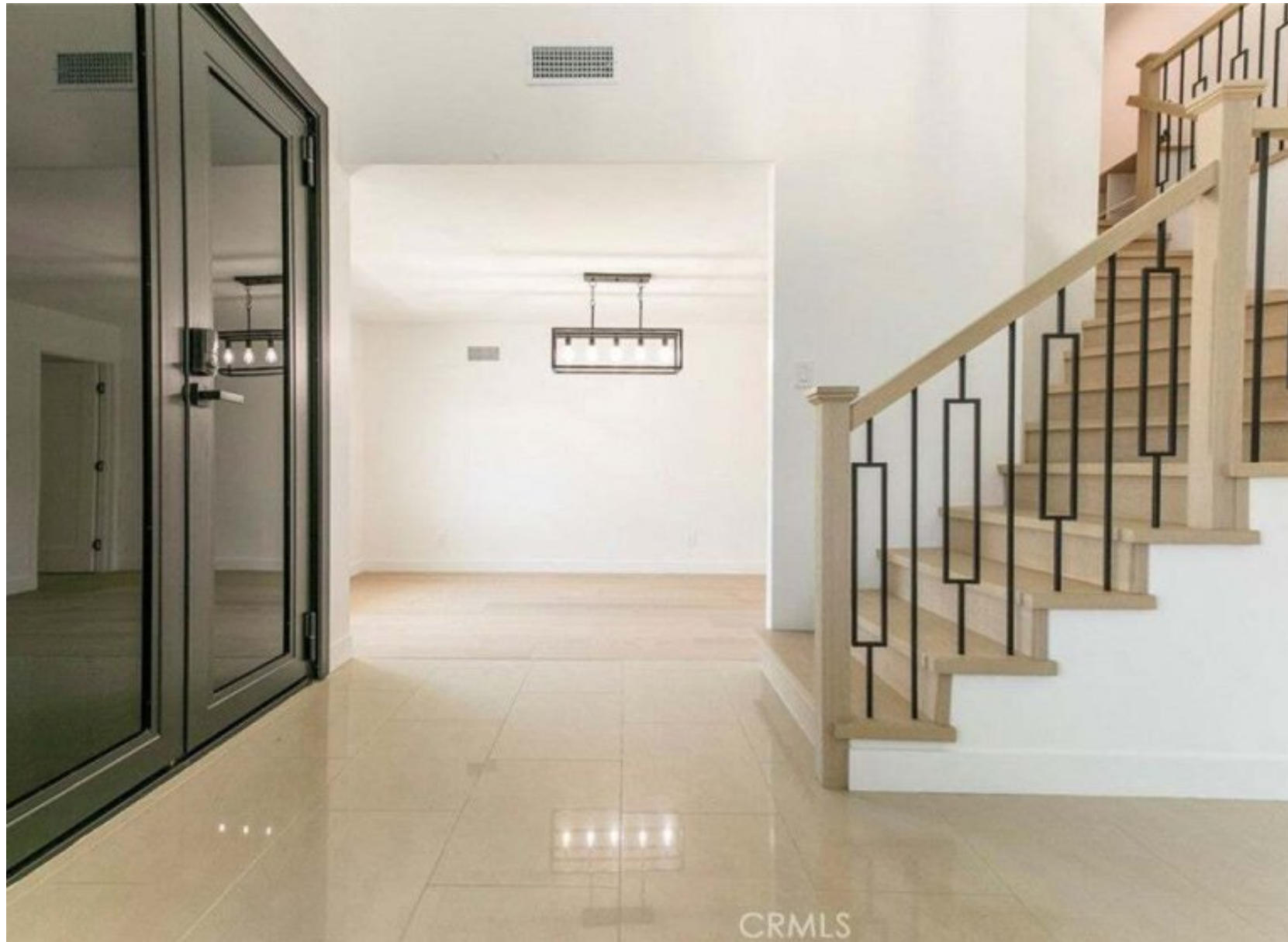
## Description

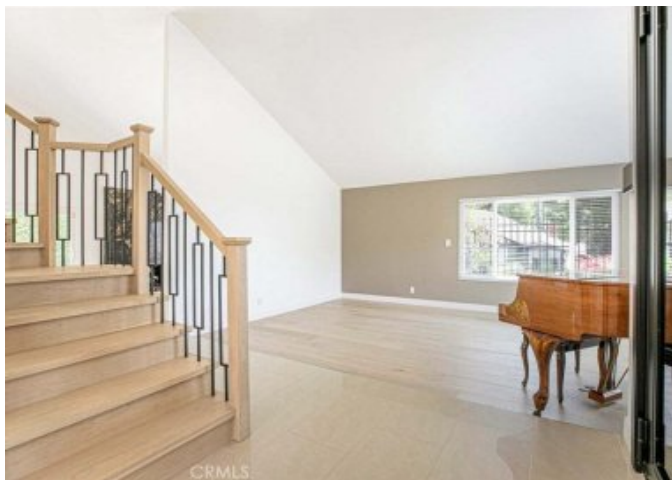
Nestled in the serene and highly coveted Emerald Isle neighborhood of Glendale, this gorgeously remodeled two-story home offers 2,849 sq ft of luxurious living on a beautifully landscaped lot. From the sleek contemporary exterior and 3-car garage to the soaring vaulted ceilings and wide-plank European oak floors, every detail exudes modern elegance. The sun-drenched living and family rooms flow seamlessly into a show-stopping gourmet kitchen featuring a waterfall island, custom cabinetry, quartz countertops, and high-end appliances. Upstairs, spacious bedrooms provide peaceful retreat, while designer bathrooms boast floating vanities, frameless glass showers, and a spa-like soaking tub. Step outside to your private backyard oasis—complete with a sparkling pool, lush greenery, and multiple entertaining spaces. Zoned to top-rated Glendale schools and minutes from The Americana, Whole Foods, parks, and freeway access, this turnkey stunner is the perfect blend of style, space, and location. Welcome to Emerald Isle living at its finest.













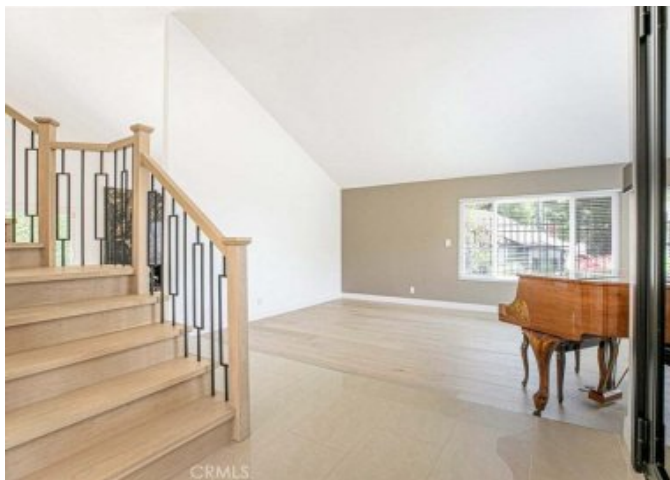
CRMLS



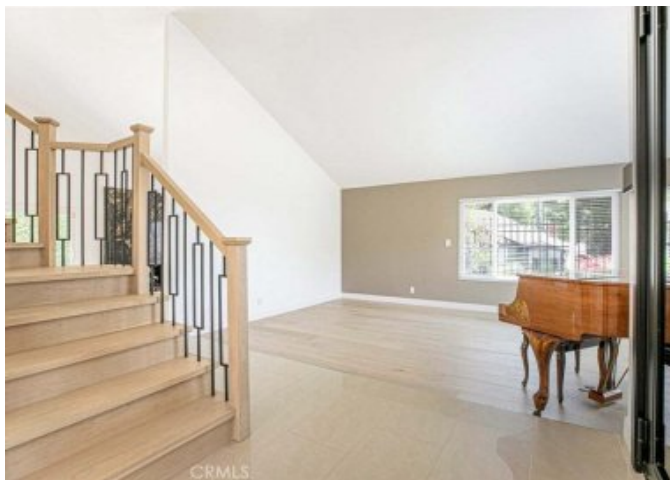








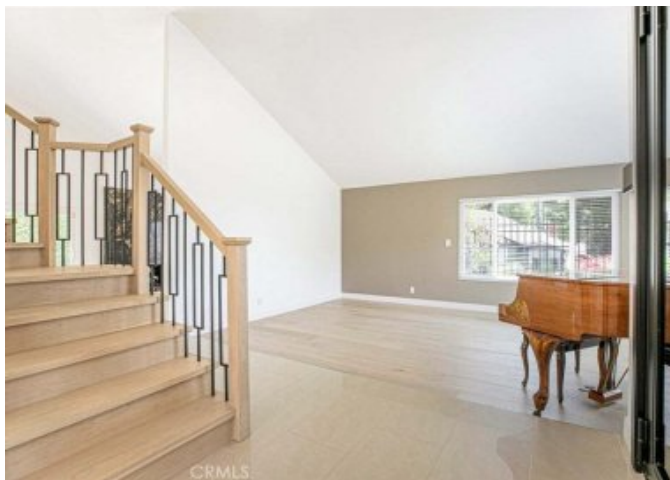




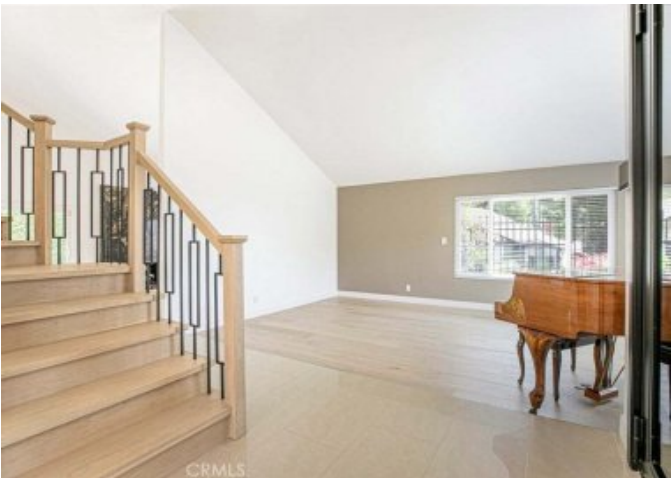




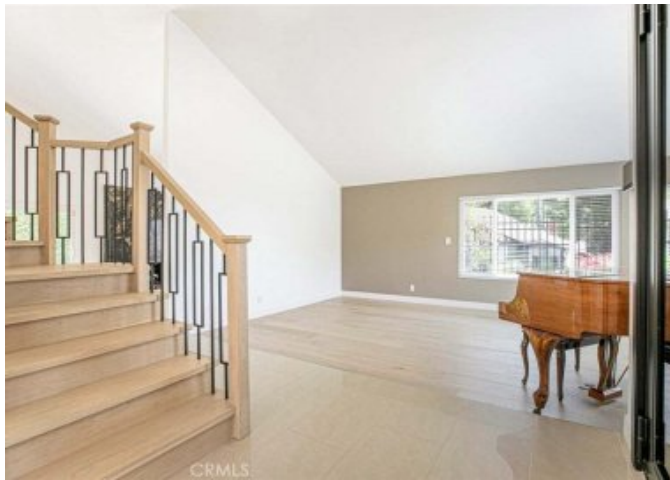




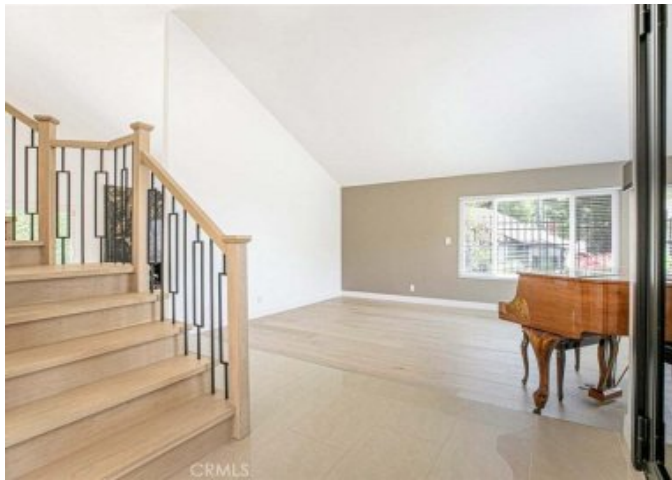






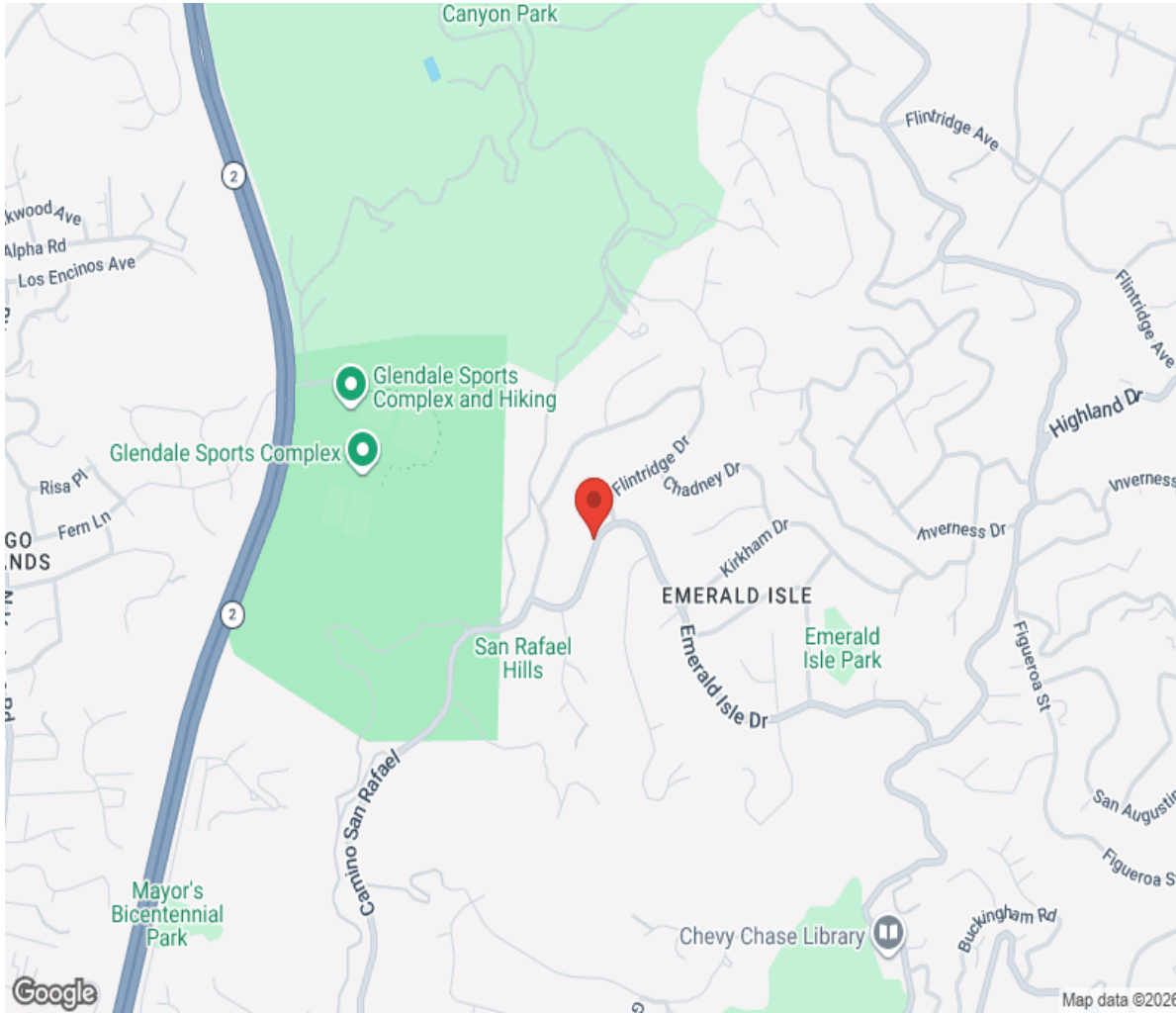








# Location



# Hamptons

INTERNATIONAL

**+44 (0)20 8618 4551**

**[international@hamptons.co.uk](mailto:international@hamptons.co.uk)**

**[www.hamptons-international.com](http://www.hamptons-international.com)**