

Hamptons

INTERNATIONAL



426 27th Ave, San Mateo, CA 94403

4 🏠 2 🏡

£1,710,000

(\$2,298,000)

Property details



426 27th Ave, San Mateo, CA 94403

4 🏠 2 🚗

£1,710,000
(\$2,298,000)

Key features

- **Water: Other Water Source**
- **Garage Count: 1 Car Garage**
- **Sewer: Public**
- **Heating Type: Forced Air**

Attributes

🏠 **Garage**

Description

Charming & extensively remodeled single-level home in desirable Beresford Park neighborhood. Stylish 4 BR, 2 BA + FR blends classic architectural charm w/modern functionality & upscale living. Home features a professionally landscaped drought resistant front yard. Upon entry, you're greeted by a LV adorned w/newly refinished original parquet floors, beamed ceilings & a cozy wood-burning fireplace, setting a warm & inviting tone. The open & large DR is perfect for large gatherings. The gourmet kitchen is equipped with custom wood cabinets, quartz counters, high-end S/S appliances, pantry & nook for every day meals. The BR wing on the right side of the home includes a primary suite, 2 other BR's & another remodeled bath. On the opposite side of the DR is a 4th BR which could be used as a home office & a spacious FR w/built-in bookcases & backyard access. High quality double pane wooden windows, multiple skylights, a wonderful enclosed deck, 1-car attached garage w/laundry facilities, low maintenance flat backyard w/fruit trees, patios, ideal for relaxation, playing & entertaining, & possible ADU addition. Close to shopping, restaurants, Beresford Park & Rec Center, Hillsdale Mall, many schools, SFO, public transportation and commute corridors to Silicon Valley & San Francisco.







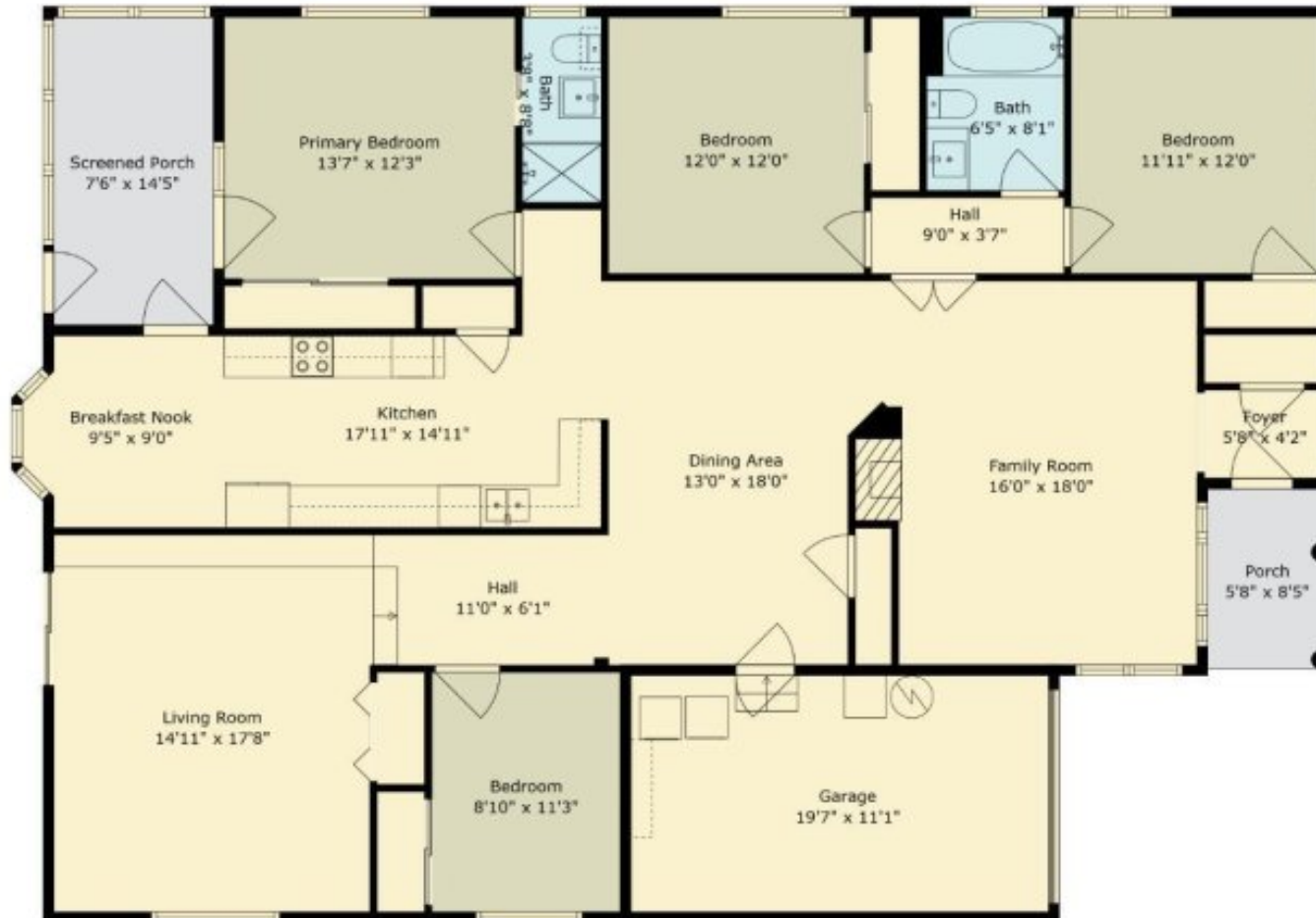








426 27th Ave, San Mateo, Ca 94403



TOTAL: 1949 sq. ft
FLOOR 1: 1949 sq. ft
EXCLUDED AREAS: GARAGE: 217 sq. ft, SCREENED PORCH: 108 sq. ft, PORCH: 48 sq. ft,
WALLS: 129 sq. ft

Floor Plan Created By Cubicasa App. Measurements Deemed Highly Reliable But Not Guaranteed.

















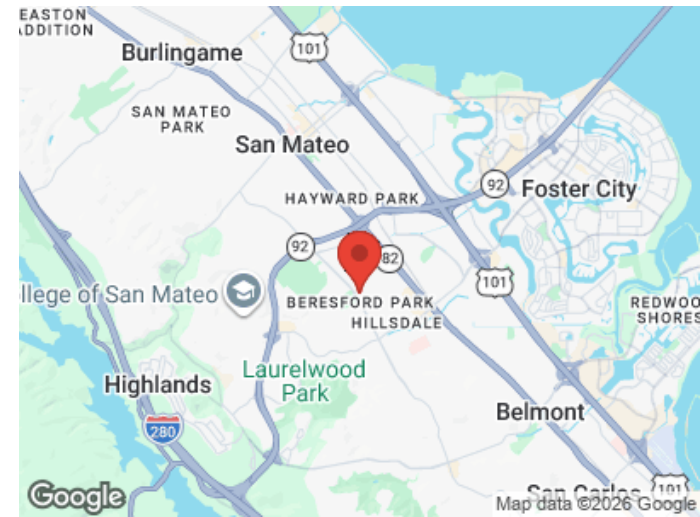
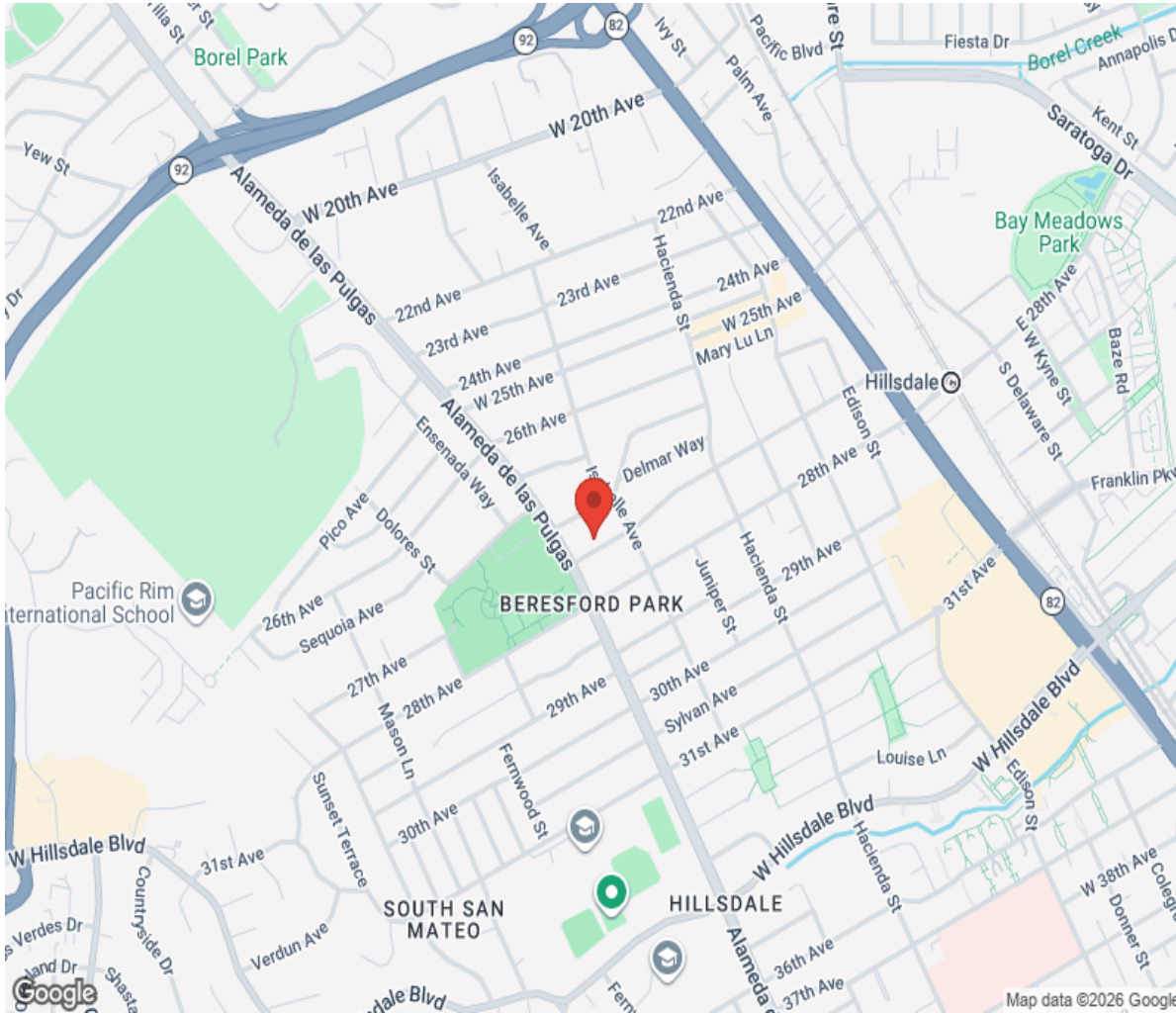








Location



Hamptons

INTERNATIONAL

+44 (0)20 8618 4551

international@hamptons.co.uk

www.hamptons-international.com