

# Hamptons

INTERNATIONAL

---

**20025 Manor Rd, Shorewood, MN 55331**

6 卐 6 卐

**£2,200,000**

**(\$2,995,000)**





## Property details



### Key features

- Heating - Fuel Type: Gas
- Sewer: Public
- Garage Count: 3 Car Garage
- Pool Description: Pool
- Fireplace Count: 2 Fireplaces
- Cooling: Central A/C
- Water: City Water
- Special Program: Global Luxury

### Attributes

-  Swimming pool
-  Garage
-  Private parking
-  Garden

**20025 Manor Rd, Shorewood, MN 55331**

**£2,200,000**  
**(\$2,995,000)**

6  6 

## Description

A flawless fusion of design and detail, this mint-condition showpiece was completely reimagined in 2019 through a no-expense-spared, full-scale renovation. Through an inspired design collaboration between the owners, Vintage Elements and Aspect Design Build, this home is an elevated masterwork of precise architecture, elevated with custom millwork, top-of-the-line appliances, and sophisticated finishes. The magical blend of bold elements alongside subtle details and simple forms creates spaces that pull you in and seamlessly shift from luxurious everyday living to unforgettable entertaining. Perched on a private hilltop east of Excelsior, 20025 Manor Road has embraced its breathtaking setting since 1964. Designed around the contours of the land, the sprawling layout embraces the various nature views from well beyond the two-acre site. The low-profile design slowly presents itself as you crest the hill, and never truly hints at the volume of the interior spaces. Dominated by a long horizontal roof line with deep eaves, the home appears to simply be a mid-century Rambler, until you find the separate wings tucked behind each end. The sculpted walkway to the front door meets a central brick wall, defining the entry while giving privacy to the dramatic screen porch on the Southeast corner. This screen porch integrates with the living room and highlights the designer's intention of indoor / outdoor living, which continues throughout the property. A new pool and cabana grace the west side of the property while brick patios, deck and lower fire pit area give direct access to the outdoors from the central rooms and primary suite zone, respectively. This home has been featured in many national catalog shoots and TV commercials, highlighting the indoor / outdoor feeling. A Home and Garden feature summarizes the property well, available in supplements. At night, the whole property bathes in a gentle glow from the extensive driveway, landscape and tree lighting. The circular drive allows ample guest parking. New roof, windows/doors, HVAC, garage floor. Minutes to Excelsior, LRT trail and Cottagewood general store. Part of the property is in Deephaven, allowing for Deephaven parking permit and boat slip opportunity. Award winning Minnetonka Schools.





















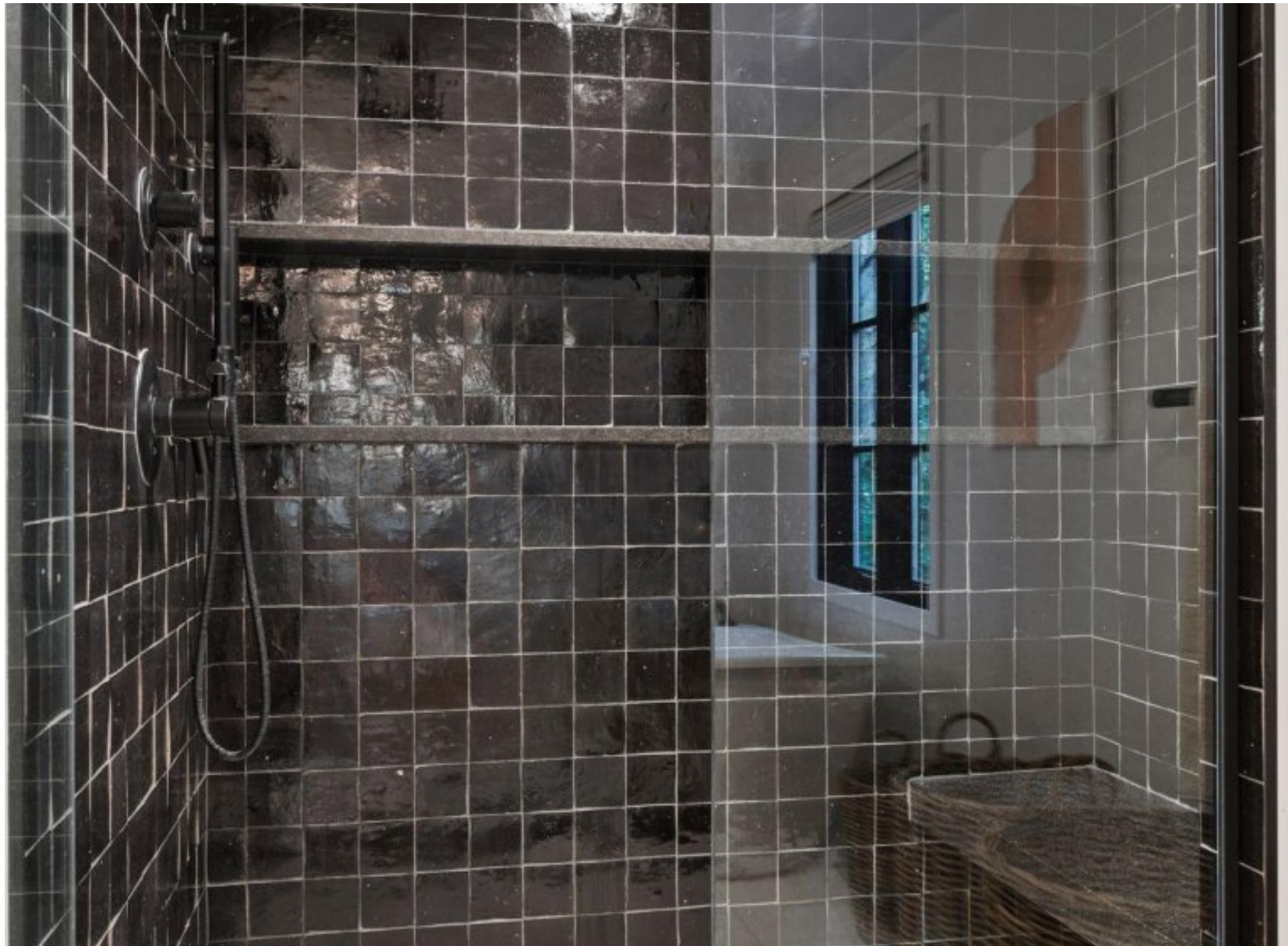






























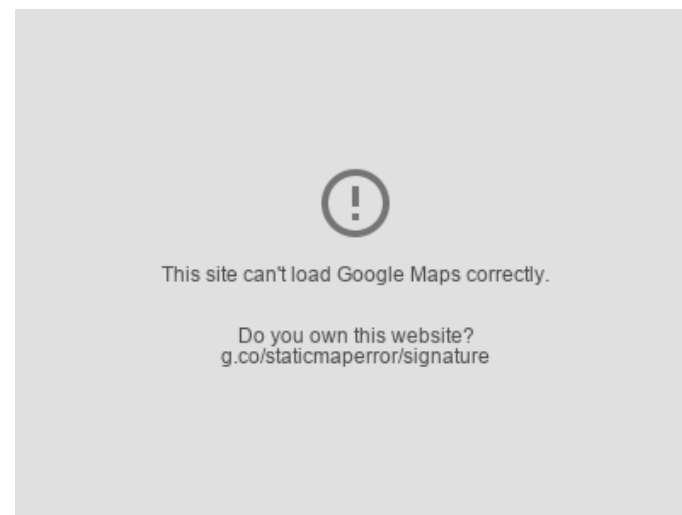
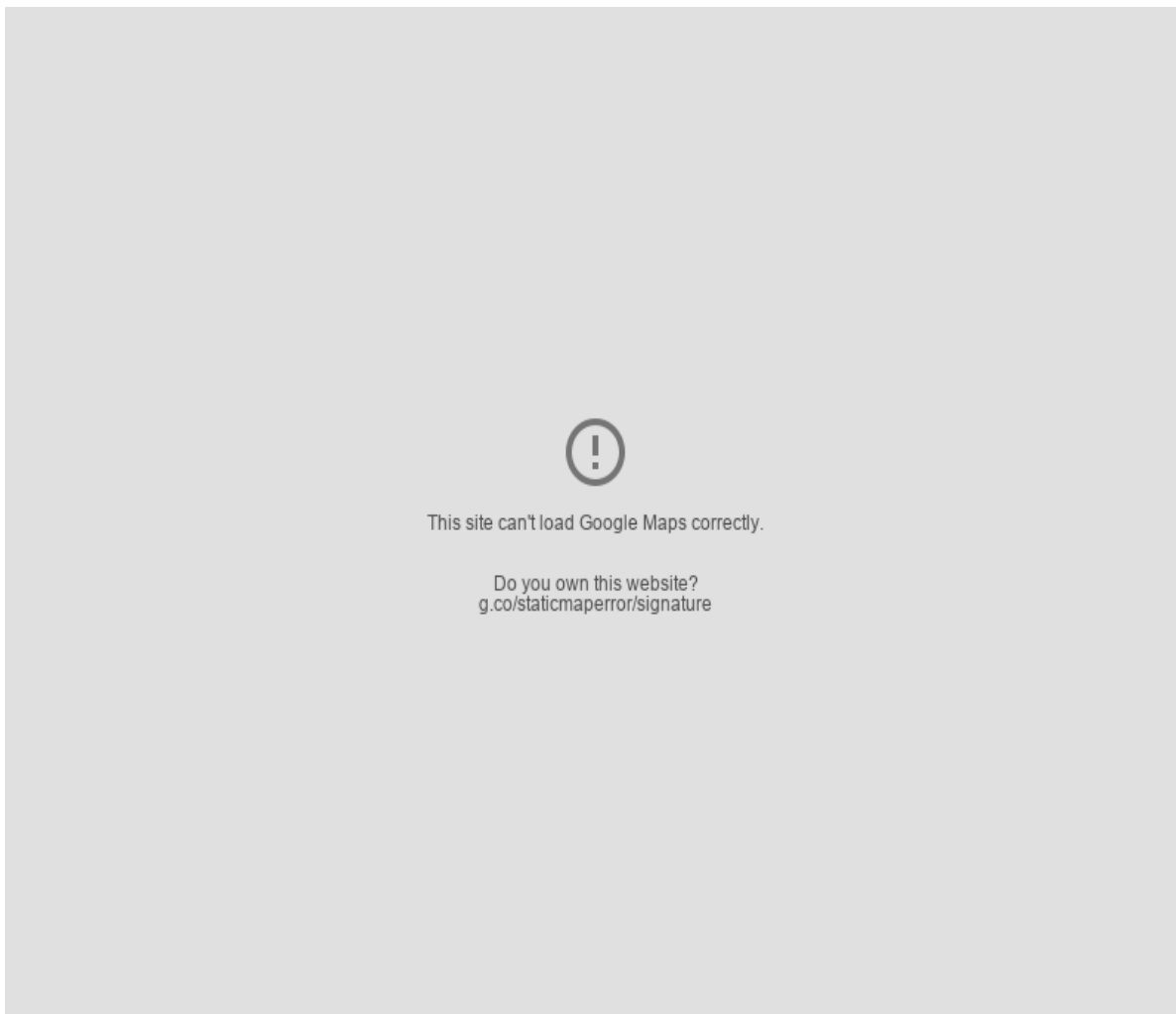






# Location

---



# Hamptons

INTERNATIONAL

**+44 (0)20 8618 4551**

**[international@hamptons.co.uk](mailto:international@hamptons.co.uk)**

**[www.hamptons-international.com](http://www.hamptons-international.com)**