

Hamptons

INTERNATIONAL



8326 SW 107th Pl, Ocala, FL 34481

3 🏠 2 🚗

£130,000

(\$175,000)

Property details



Key features

- **Garage Count: 2 Car Garage**
- **Sewer: Public**
- **Sewer: Septic**
- **Age: 31-40 Years Old**

Attributes

- **Tennis court**
- **Equestrian facilities**
- **Swimming pool**
- **Garage**
- **Near golf course**

8326 SW 107th Pl, Ocala, FL 34481

3 2

£130,000
(\$175,000)

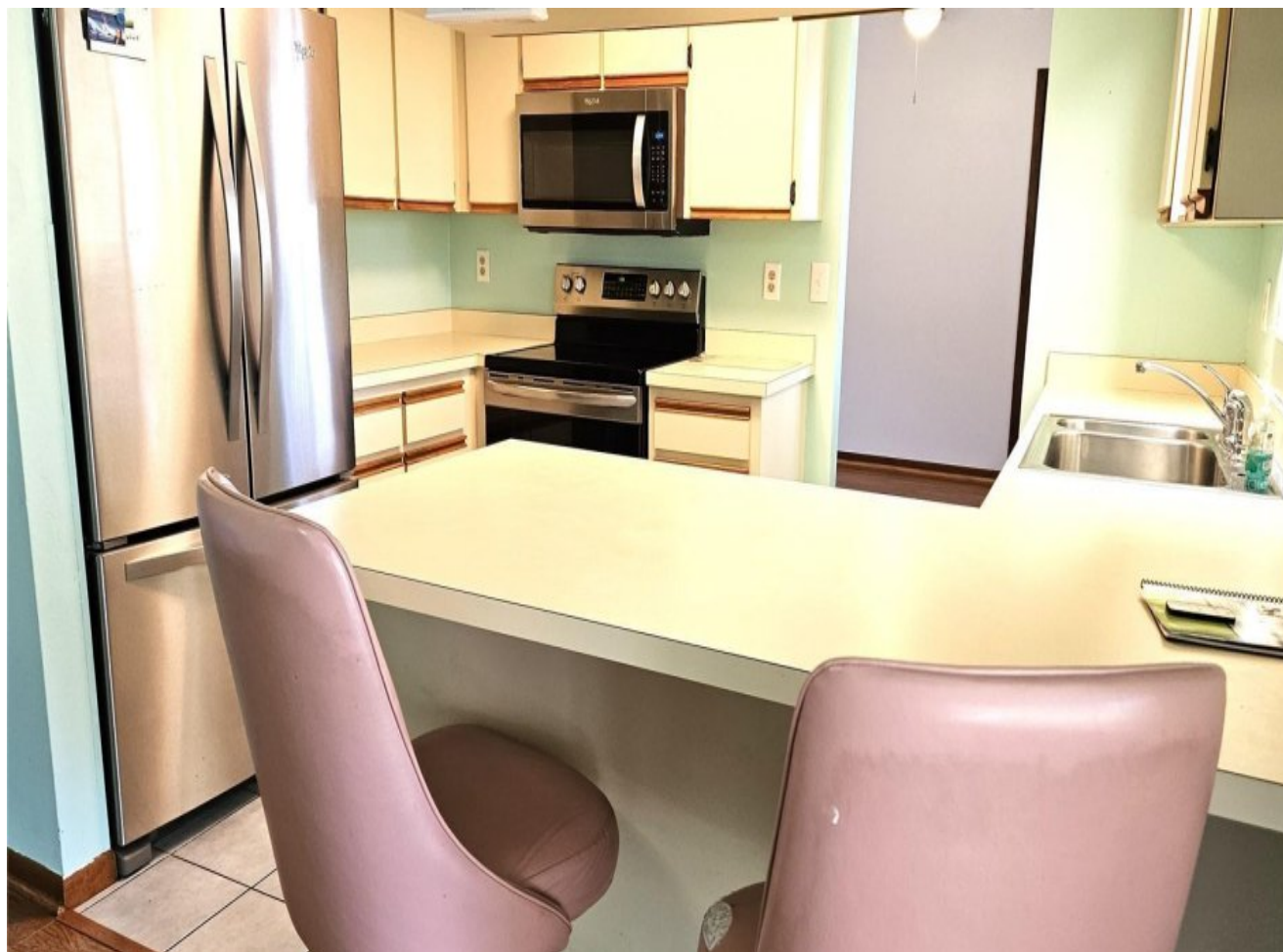
Description

This split-plan home features 3 bedrooms, 2 bathrooms, and a 2-car garage measuring 20' x 20'. It is located in a secure, 24-hour gated community specifically designed for residents aged 55 and older. The HVAC system and all new ductwork were installed in 2024, and the roof was replaced in 2020. New gutters and gutter guards were added in 2024. Inside, you'll find tile flooring and newer stainless steel appliances in the kitchen. The laundry room is equipped with a newer washer and dryer, which are included with the home. The fenced backyard has gates on either side and features a 10' x 25' patio just outside the lanai. The affordable management fee covers trash removal, 24-hour gated security, and access to a clubhouse that hosts planned social events. Other community amenities include a library, billiards room, card room, arts and crafts room, community pool, and a tennis court. Conveniently situated in southwest Ocala, this property is just a short distance from shopping centers, restaurants, the World Equestrian Center, VA hospitals, and various healthcare facilities. Golf carts are permitted, and RV or boat storage may be available for a modest monthly fee. The location offers quick access to I-75 and is just one hour from Gainesville and one and a half hours from Orlando. The clubhouse has a new roof, and the tennis court has recently been resurfaced.

























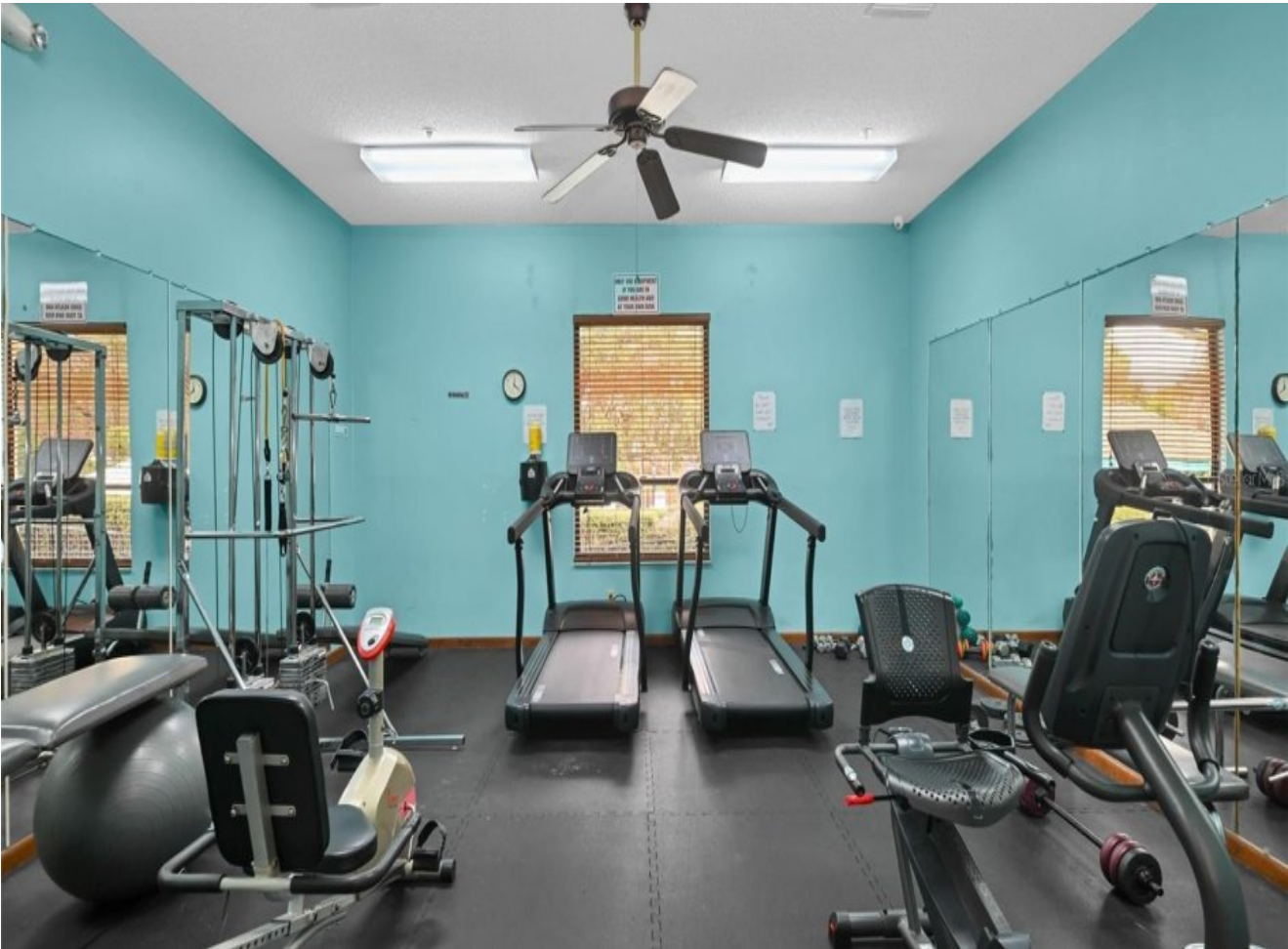
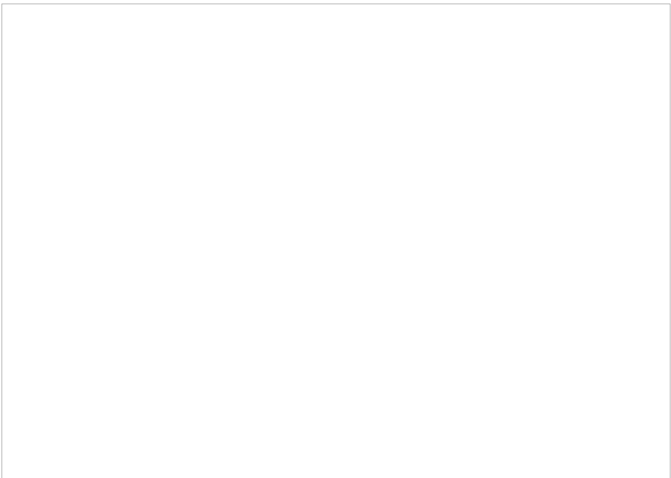






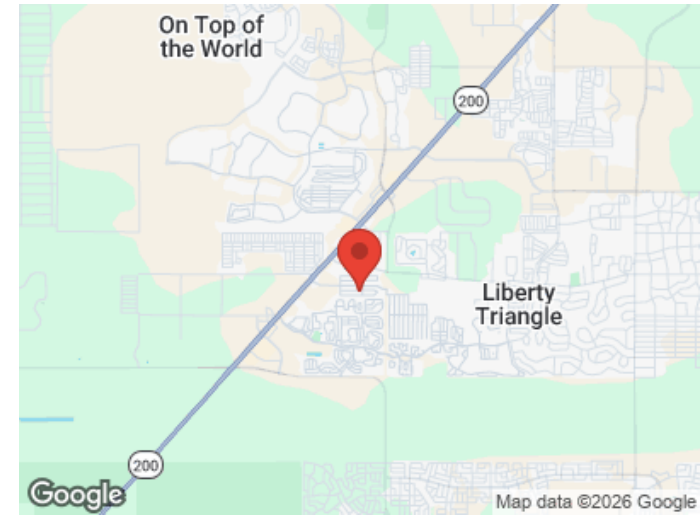
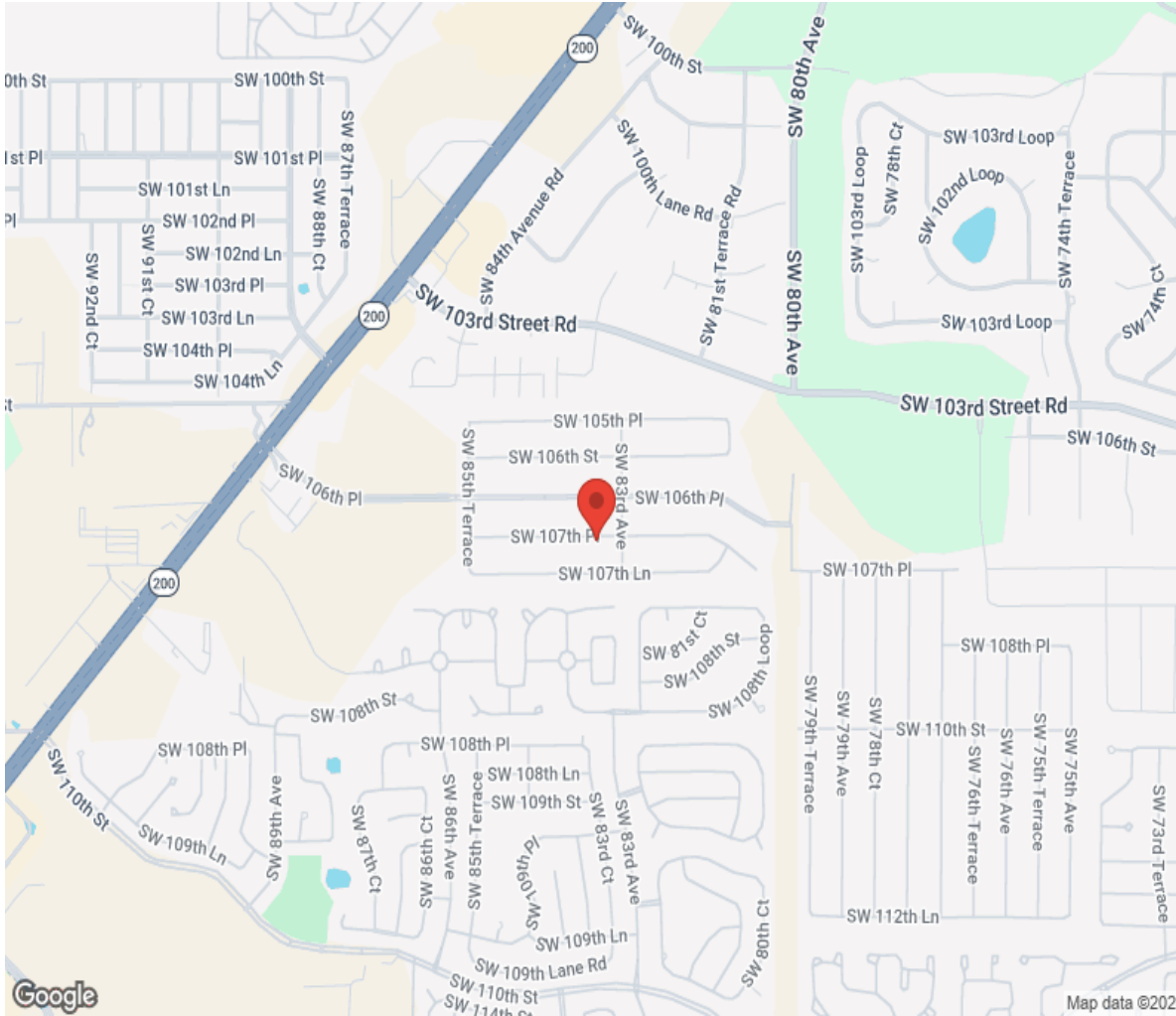








Location



Hamptons

INTERNATIONAL

+44 (0)20 8618 4551

international@hamptons.co.uk

www.hamptons-international.com