

Hamptons

INTERNATIONAL



2088 Topanga Skyline Dr, Topanga, CA 90290

£490,000

(\$656,000)

Property details



Attributes

-  **Swimming pool**
-  **Garage**

2088 Topanga Skyline Dr, Topanga, CA 90290 **£490,000**
(\$656,000)

Description

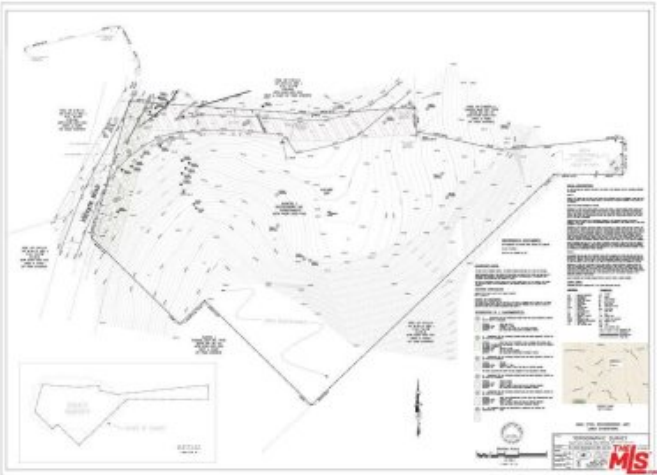
Rare opportunity to build your dream home. Beautiful, large, 1.27-acre lot with huge flat pad, serene canyon vistas, cool breezes, mature trees and gated access, almost ready to build. Located outside of the Calif. Coastal Commission. Includes Architectural plans by Karim Ladjili AIA of Atelier KL Designs for a 3-bedroom, 2,255 sq. ft. house with pool, and a 2-car 400 sq. ft. garage, plus 150 sq. ft. of mechanical space under the house. Experience the Topanga Lifestyle in all its secluded glory with this quiet, private lot, surrounded by multi-million-dollar homes, yet so close to amenities including schools, hiking, shopping, beaches, theatre, dining, LAX. 95% of the hard work, plus countless hours and hundreds of thousands of dollars have been spent, acquiring reports, entitlements, drawing up plans and obtaining permits and approvals from LA County. Water and access have been approved by LA Co. Fire Dept. Utilities are located in the Street. Architectural, Structural, Civil and Landscape are completed and submitted. Not located in an ESHA (Environmentally Sensitive Habitat Area). Regarding Environmental Health: Soils, Engineering and designs for a Septic System have been completed and submitted. If you keep the same footprint, you can start building in a couple of months. Carpe diem!





















































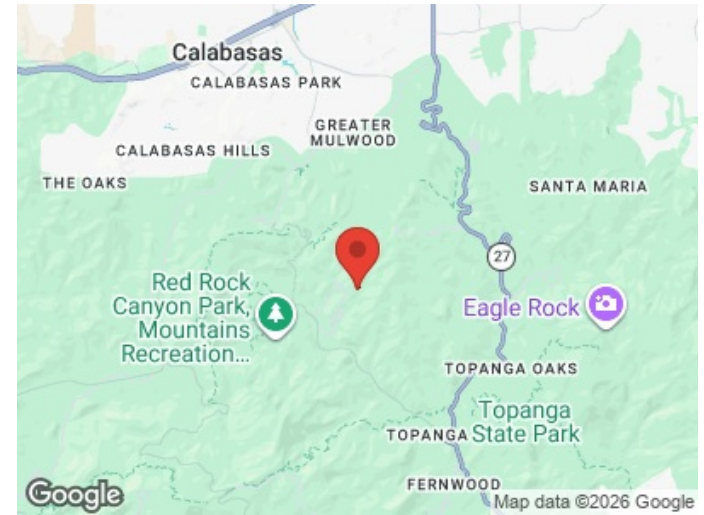
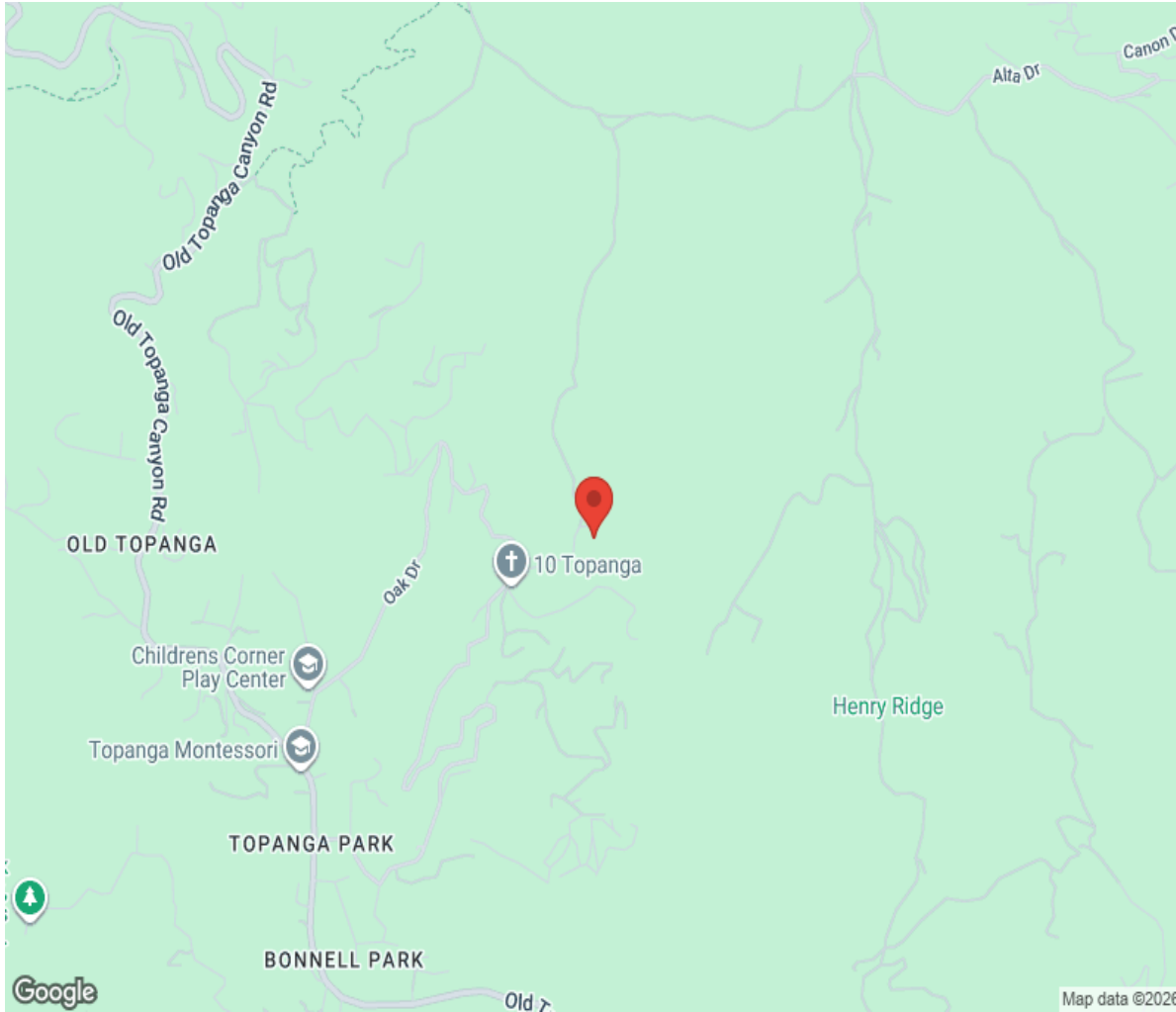








Location



Hamptons

INTERNATIONAL

+44 (0)20 8618 4551

international@hamptons.co.uk

www.hamptons-international.com