

Hamptons

INTERNATIONAL



6 Woods End Trail, Rockaway Township, NJ 07866

4 𠂆 4 𠂇

£880,000
(\$1,175,000)

Property details



Key features

- **Garage Count: 2 Car Garage**
- **Fireplace Description: Electric**
- **Fireplace Count: 1 Fireplace**
- **Sewer: Septic**
- **Water: Well**
- **Special Program: Global Luxury**

Attributes

- 🏠 **Garage**
- ↗️ **Gym**

6 Woods End Trail, Rockaway Township, NJ 07866

£880,000
(\$1,175,000)

4 🏠 4 🏠

Description

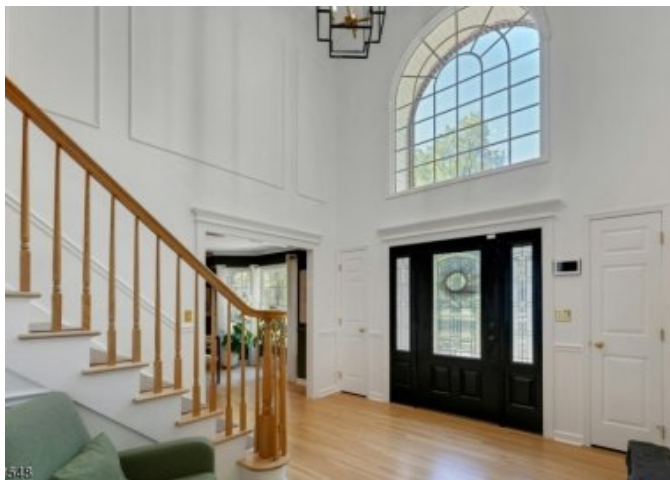
Impeccably maintained and beautifully updated, this 4 bedroom, 3.5 bathroom home combines charm with modern luxury. Soaring vaulted ceilings and abundant natural light create a warm and inviting atmosphere throughout. The gourmet kitchen is a showstopper, featuring an oversized center island, stainless steel appliances, pendant lighting, custom wood cabinetry with decorative trim, a tile backsplash, and granite countertops. A butler's pantry connects seamlessly to the elegant formal dining room, perfect for entertaining. The first floor also offers a bright living room, an oversized family room with wood-burning fireplace, stunning sunroom plus a mudroom leading to the garage. The finished walkout basement expands the living space with a kitchenette, media, gym, recreation room, and a full bath ideal for gatherings. Upstairs, hardwood floors flow throughout 3 generously sized bedrooms with ceiling fans and large closets. The oversized primary suite impresses with a tray ceiling, walk-in closet, and a spa-like bath complete with a large vanity, dual sink, granite top, soaking tub, decorative lighting, and a glass-enclosed shower. Outdoors, a spacious yard backing to wooded land creates excellent privacy. Enjoy the multitiered composite deck and paver stone patio, perfect for summer barbecues or stargazing at night. Whole house updates include the roof (2019), entire interior painted (2024), new carpet (2024), primary bath (2023), epoxy floor in garage (2024) and many others.

Bedroom 21 Feet x 14 Feet (14.0ft x 21.0ft) Bedroom 13 Feet x 13 Feet (13.0ft x 13.0ft) Bedroom 11 Feet x 12 Feet (12.0ft x 11.0ft) Bedroom 11 Feet x 15 Feet (15.0ft x 11.0ft) Dining Room 13 Feet x 15 Feet (15.0ft x 13.0ft) Family Room 15 Feet x 19 Feet (19.0ft x 15.0ft) Kitchen 24 Feet x 13 Feet (13.0ft x 24.0ft) Living Room 15 Feet x 15 Feet (15.0ft x 15.0ft)





379548





379548





379548









379548





379548





379548









379548



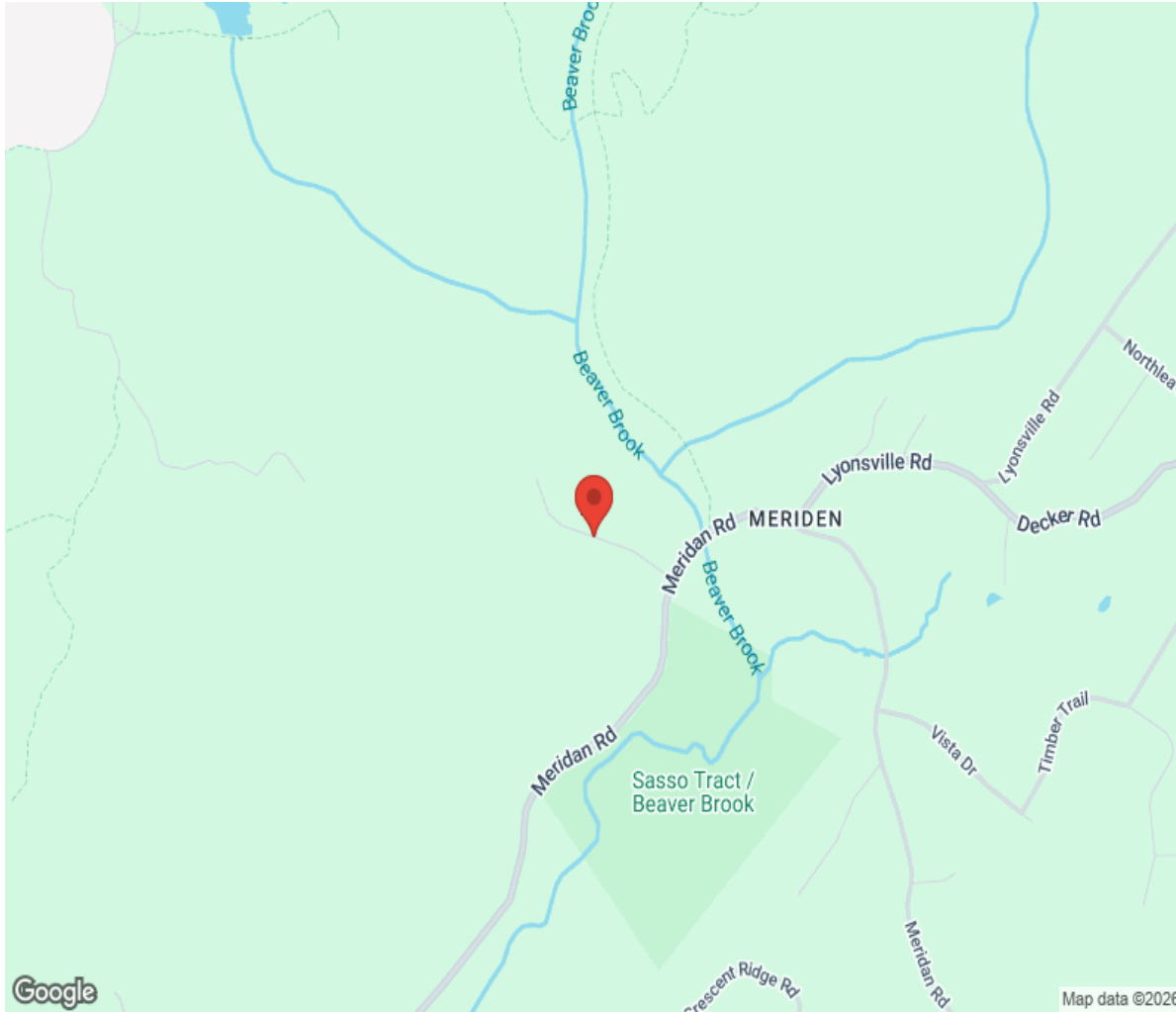


379548





Location



Hamptons

INTERNATIONAL

+44 (0)20 8618 4551

international@hamptons.co.uk

www.hamptons-international.com