

Hamptons

INTERNATIONAL



Royal Drive, London, N11

3  2  1 

£840,000

(£840,000)

Property details



Key features

- Three bedrooms
- two bathrooms
- double height ceiling
- excellent decorative order
- allocated parking
- chain free

Attributes

- Apartment

Royal Drive, London, N11

3 2 1

£840,000
(£840,000)

Description

Three bath, two bath first and top floor apartment in Princess Park Manor, set in 30 acres of parkland with allocated parking. Located on the first/top floor at the front of Princess Park Manor. This stunning three bedroom flat has a large reception room with stunning double height ceiling. As you enter the large entrance hall is laid with porcelain tiles. There are two generous storage cupboards. Double door open into the reception room. This incredible room has the 'wow' factor. The double height vaulted ceilings have the exposed wooden beams that have been painted to soften the space and accentuates the ceiling height. Large sash windows spans the width of the room, flooding the space with lots of natural light. The kitchen is located at the end of this spacious 30ft room and is slightly raised creating separation to the main living room. The kitchen is fitted with granite work tops, large range oven and quality integrated appliances. The principal bedroom has dual aspect windows, bespoke built in wardrobes and en-suite bathroom. There are two more double bedrooms, also fitted with built in wardrobes and a separate shower room. The flat has allocated parking and is sold with no onward chain. Situation Princess Park Manor is a well known landmark residential development set in 30 acres of parkland boasting 24 hour security, an on site gym and pool (separate membership fees apply). Nearby stations at New Southgate and Arnos Grove provide swift access into the City (Moorgate) and West End. Friary Park, Arnos Park and Broomfield Park providing wonderful, green open spaces are all in the vicinity. Property Ref Number: HAM-61203





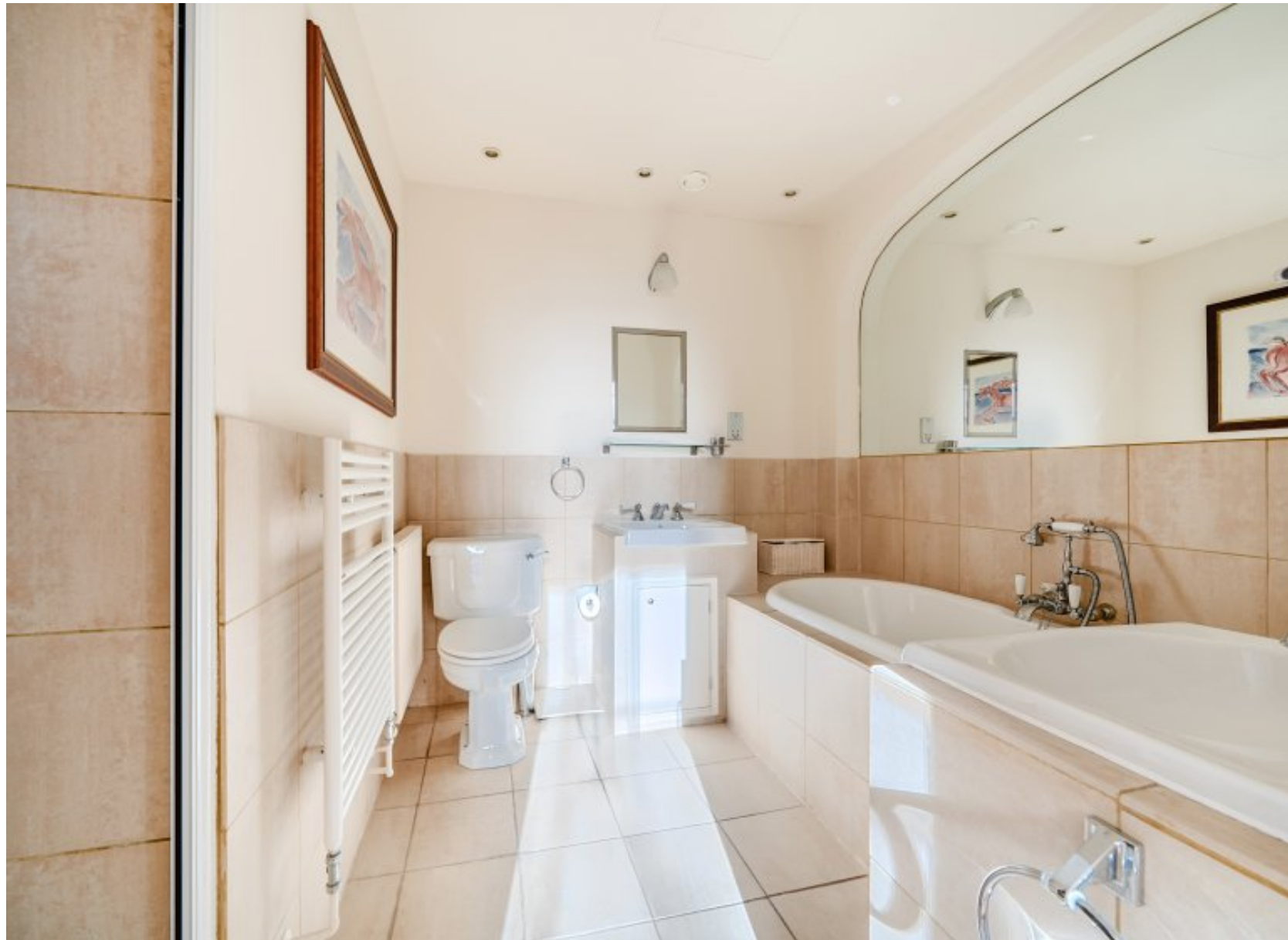


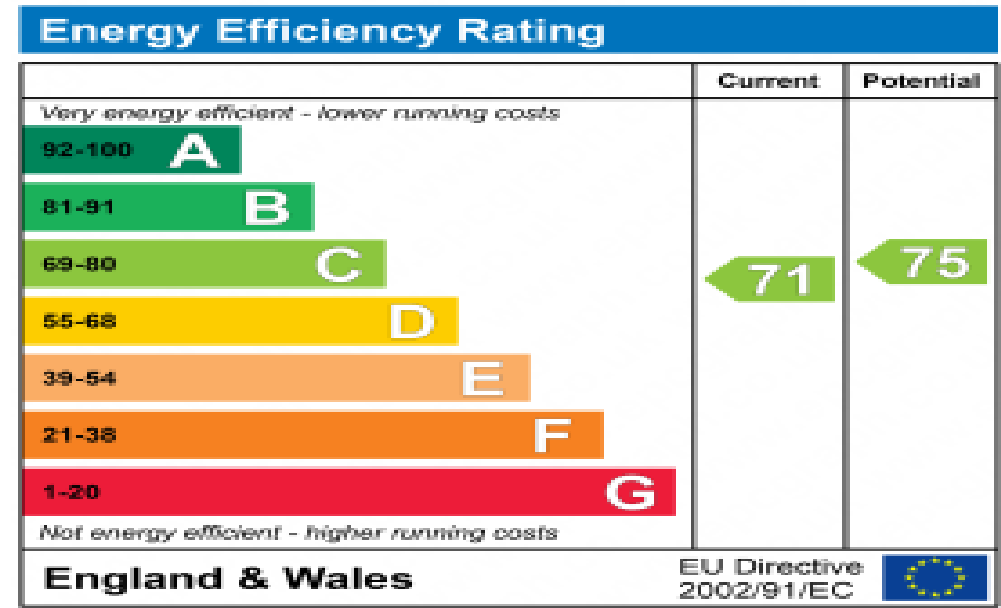












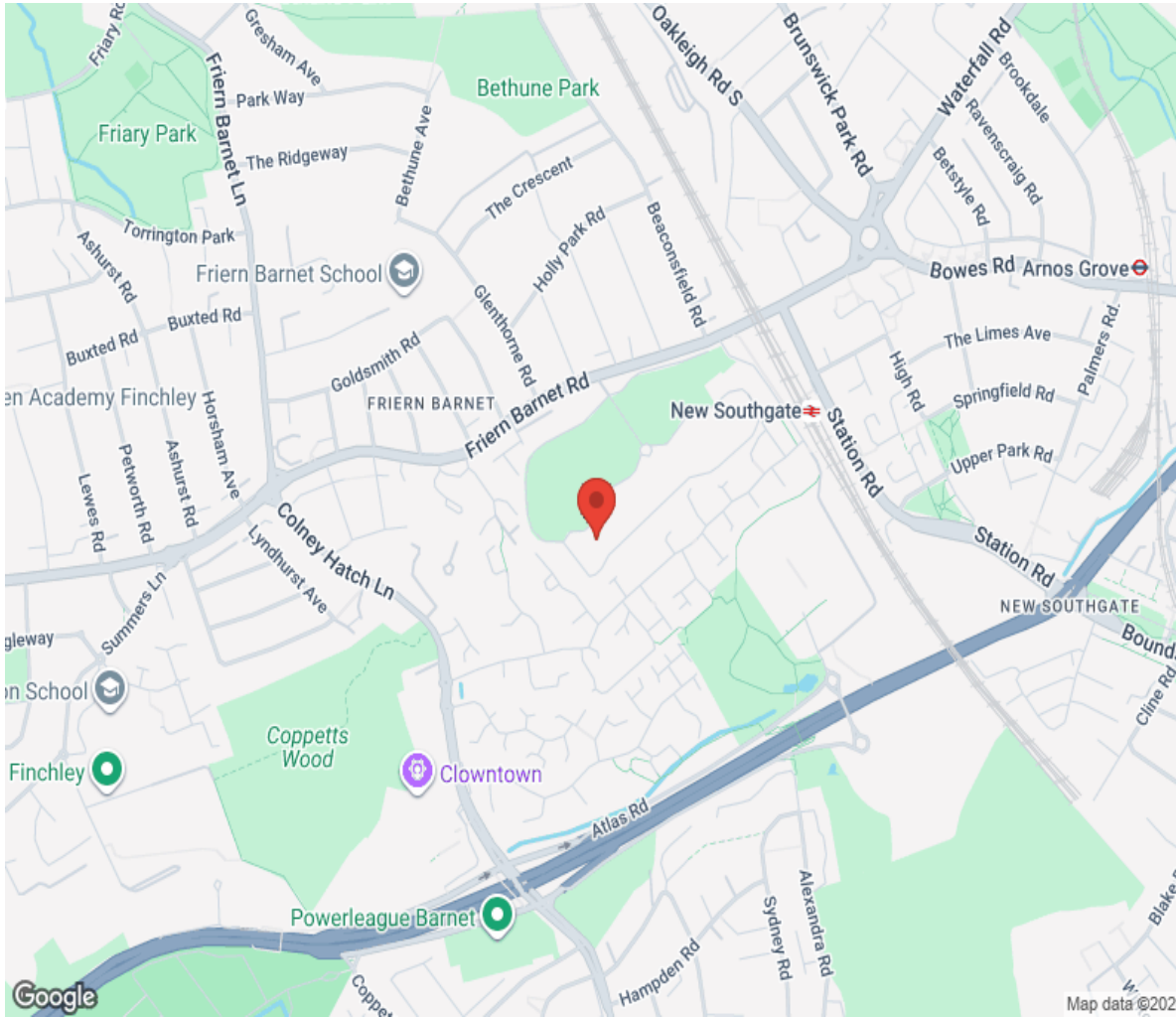
Floor plan

Approximate Area = 1768 sq ft / 164.2 sq m
For identification only - Not to scale



Floor plan produced in accordance with RICS Property Measurement 2nd Edition.

Location



Hamptons

INTERNATIONAL

+44 (0)20 8618 4551

international@hamptons.co.uk

www.hamptons-international.com