

Hamptons

INTERNATIONAL



1200 E Pineridge Ave, McAllen, TX 78503

2 𠄎 3 𠄎

£120,000

(\$154,900)

Property details



Key features

- **Basement: Slab Foundation**
- **Garage Count: 1 Car Garage**
- **Age: 11-20 Years Old**
- **Sewer: City**
- **Water: City Water**

Attributes

- 🏠 **Garage**
- **Apartment**

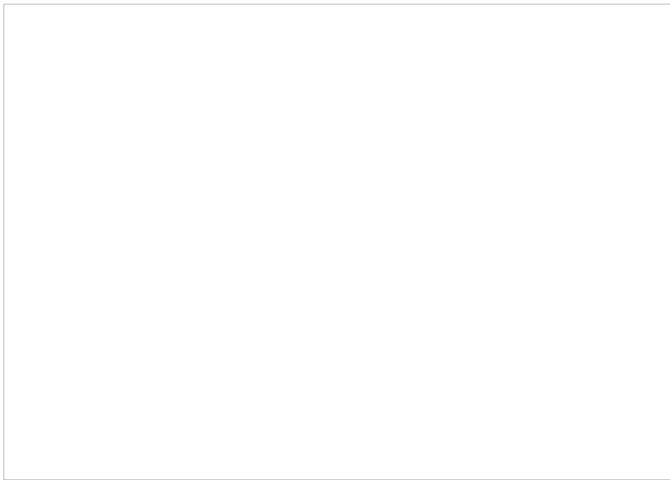
1200 E Pineridge Ave, McAllen, TX 78503

£120,000
(\$154,900)

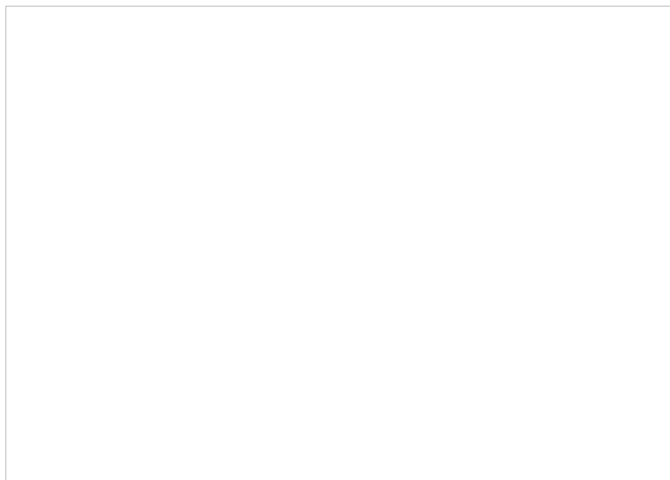
2 🏠 3 🏠

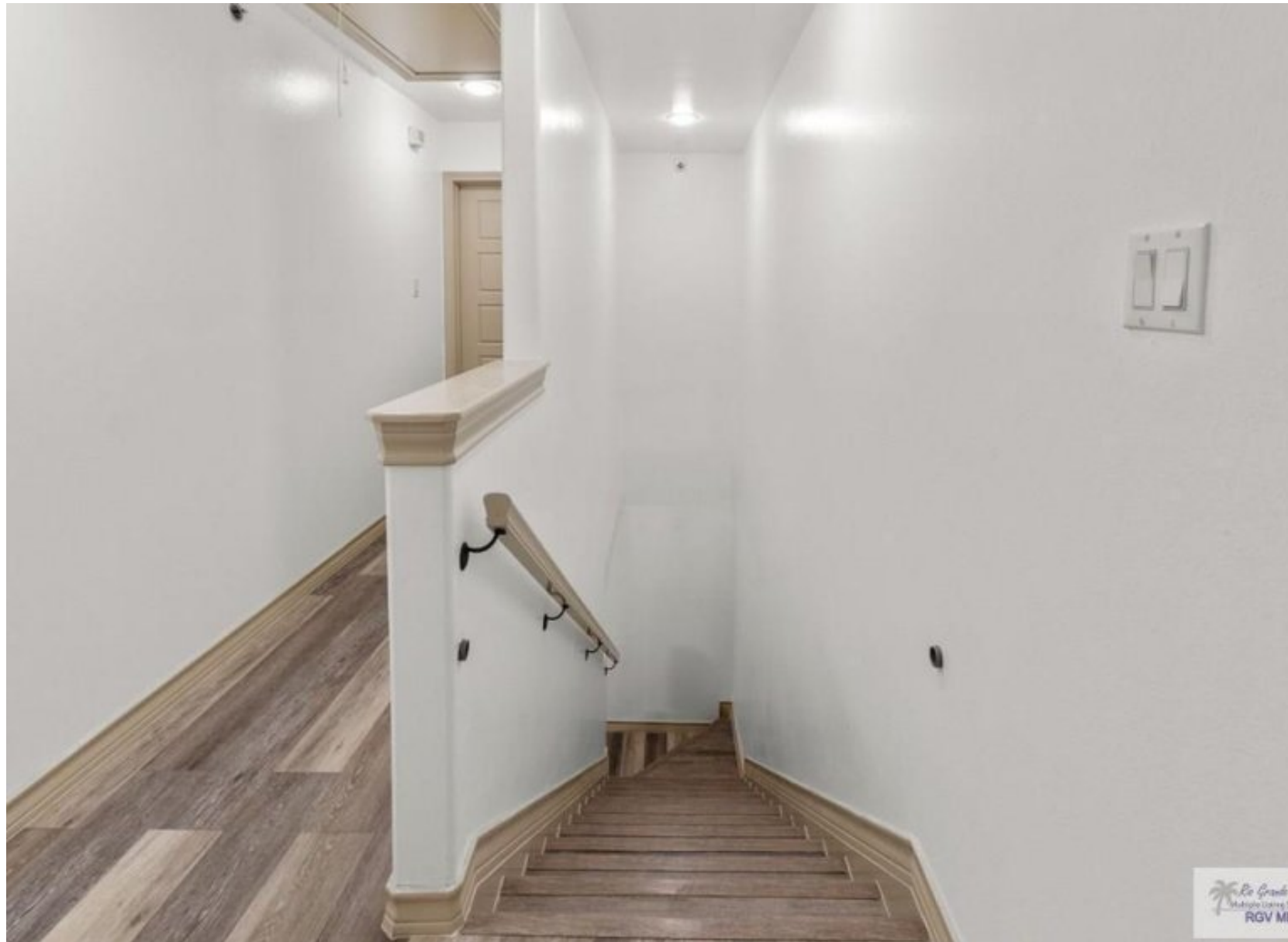
Description

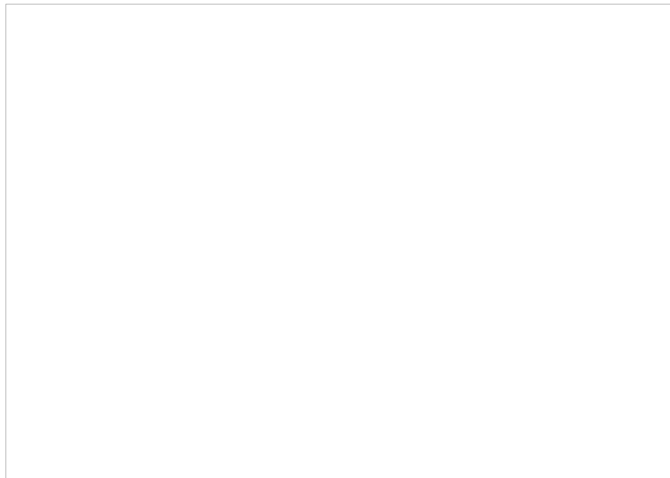
Discover sophisticated living in this two-story condo, distinguished by a durable tile roof and low-maintenance stucco exterior. The thoughtful layout separates the main living areas from the quiet sleeping quarters. On the first floor, you'll find the primary living spaces, along with a 1/2 bath for guests. Upstairs, each of the two spacious bedrooms features its own en-suite bathroom, creating a private retreat for all occupants. Out back, a secluded, private patio provides a wonderful outdoor extension of the living space. There is also a single car attached garage.





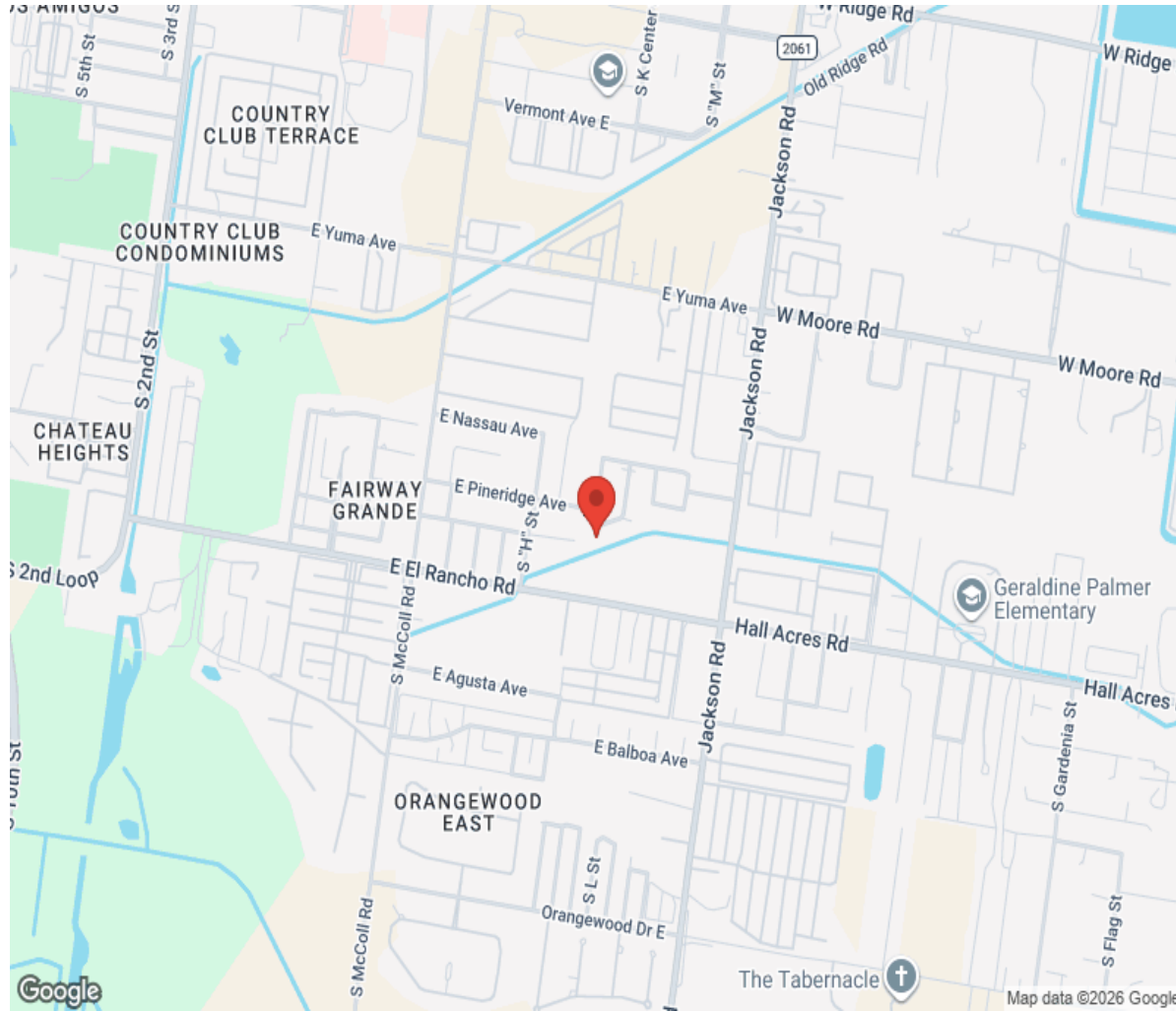








Location



Hamptons

INTERNATIONAL

+44 (0)20 8618 4551

international@hamptons.co.uk

www.hamptons-international.com