

# Hamptons

INTERNATIONAL



## Sheffield Terrace London W8

5 🏠 4 🚗 1 📧

**£20,000**

(£19,500)

## Property details

---



### Sheffield Terrace London W8

5 🏠 4 🚗 1 📺

**£20,000**  
**(£19,500)**

## Description

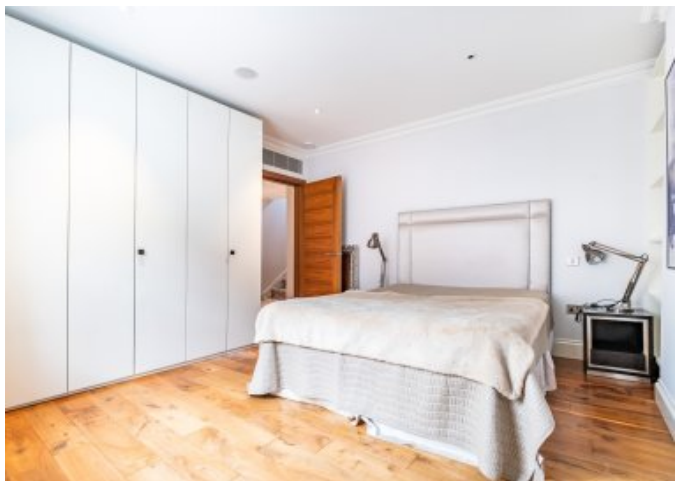
A stunning spacious five bedroom terraced house arranged over five floors, offering lots of storage space, abundance of natural light and multiple terraces. This beautifully presented town house property includes high ceilings, generous living space, modern finishes and bright interiors throughout. The ground floor features a welcoming reception room leading to a dining area and terrace, the lower ground floor includes two bedrooms, a utility room, shower room and access to a private patio. On the first floor, there is a large principle bedroom with access to a private balcony, along with a family bathroom and additional study area. The second floor offers two further double bedrooms, a study and bathroom, plus a terrace providing outdoor space and light. The top floor includes a bright double bedroom with its own bathroom and generous storage. Offered furnished To check broadband and mobile phone coverage please visit Ofcom here [ofcom.org.uk/phones-telecoms-and-internet/advice-for-consumers/advice/ofcom-checker](http://ofcom.org.uk/phones-telecoms-and-internet/advice-for-consumers/advice/ofcom-checker) Situation Sheffield Terrace is just off Kensington Church Street, moments from the boutiques, caf?s and of Kensington Gardens and Holland Park are within easy reach. Excellent transport links of High Street Kensington (Circle and District lines).and Notting Hill Gate(Circle, District and Central lines).Recently RefurbishedEat-in KitchenLarge Principle suiteRoof TerraceAir ConditioningWood Floors







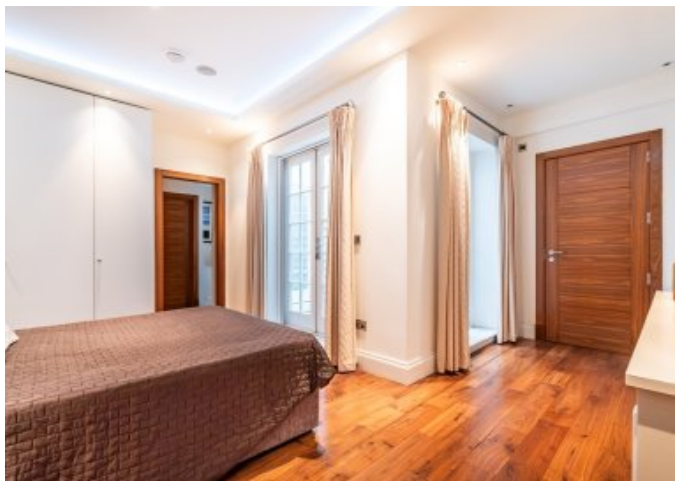




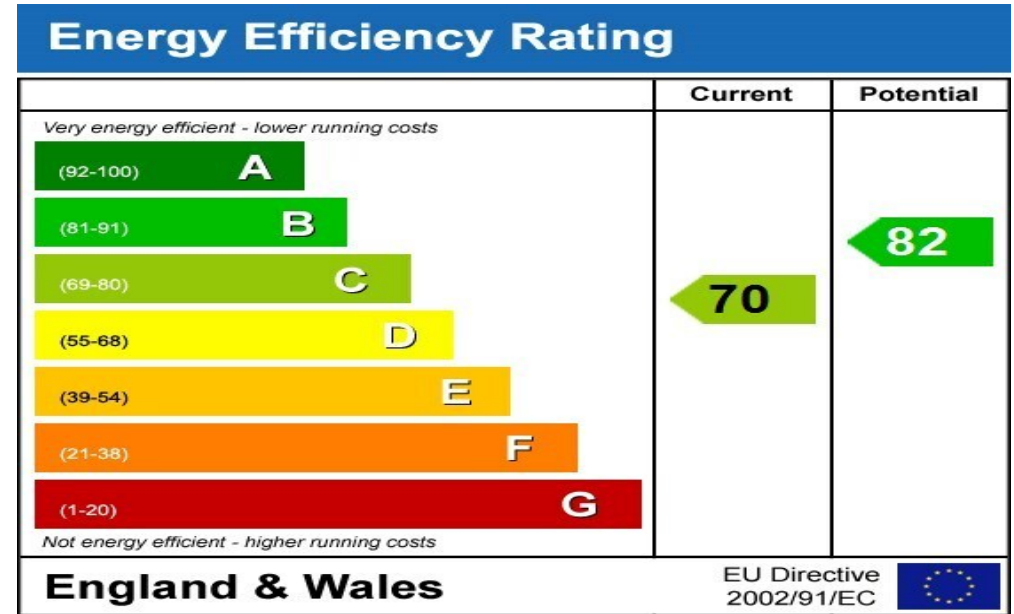












# Floor plan

**Appendix C: Core Internal Area** (excluding void)

**Lower Ground Floor** – 216 sq. ft. (20.1 sq. m)

**Ground Floor** – 204 sq. ft. (19.0 sq. m)

**First Floor** – 252 sq. ft. (23.5 sq. m)

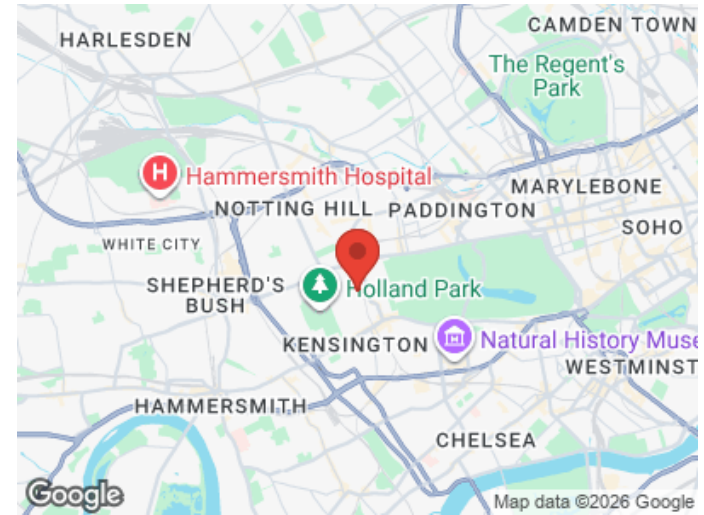
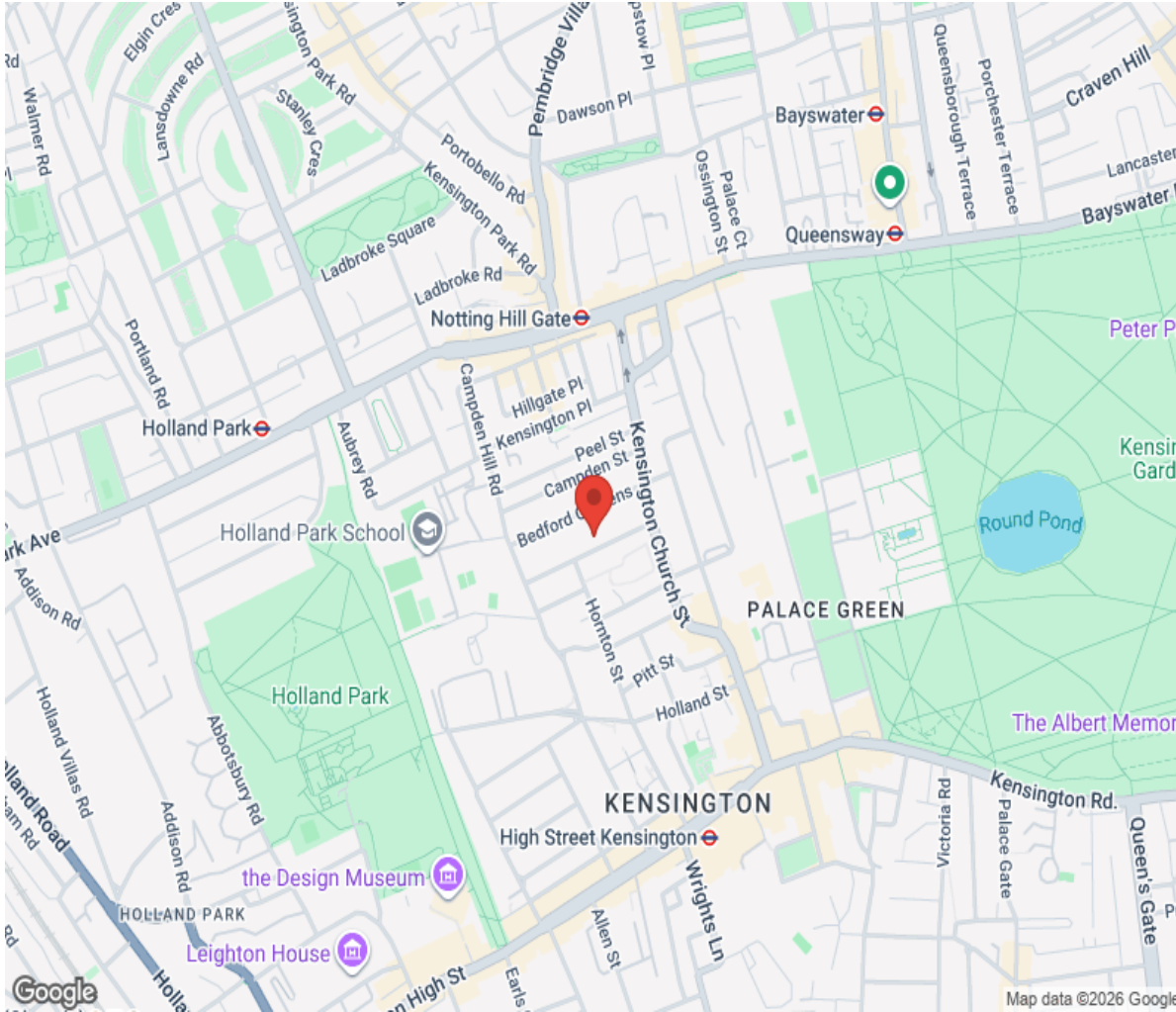
**Second Floor** – 234 sq. ft. (21.8 sq. m)

**Third Floor** – 412 sq. ft. (38.2 sq. m)

**Total** – 1328 sq. ft. (123.6 sq. m)



# Location



**Hamptons**

INTERNATIONAL

**+44 (0)20 8618 4551**

**international@hamptons.co.uk**

**www.hamptons-international.com**