

# Hamptons

INTERNATIONAL



**1456 Western Ave, Glendale, CA 91201**

6 🏠 5 🚗

**£2,530,000**

**(\$3,395,000)**




## Property details



### Key features

- **Age: Over 50 Years Old**
- **Garage Count: 2 Car Garage**
- **Sewer: Public**

### Attributes

-  **Swimming pool**
-  **Garage**
-  **Gym**

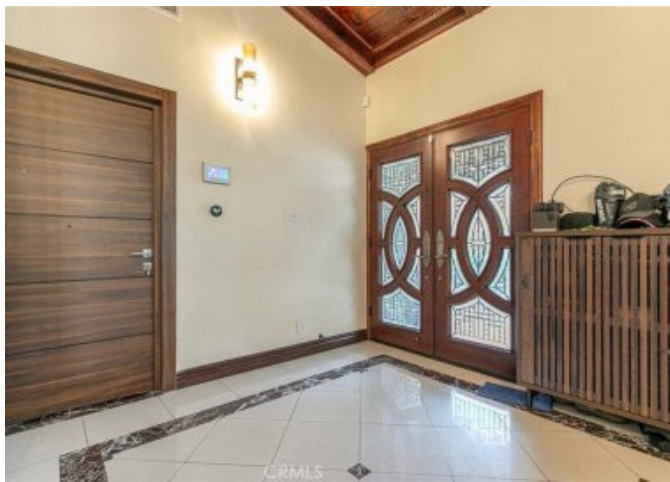
**1456 Western Ave, Glendale, CA 91201**

**£2,530,000**  
**(\$3,395,000)**

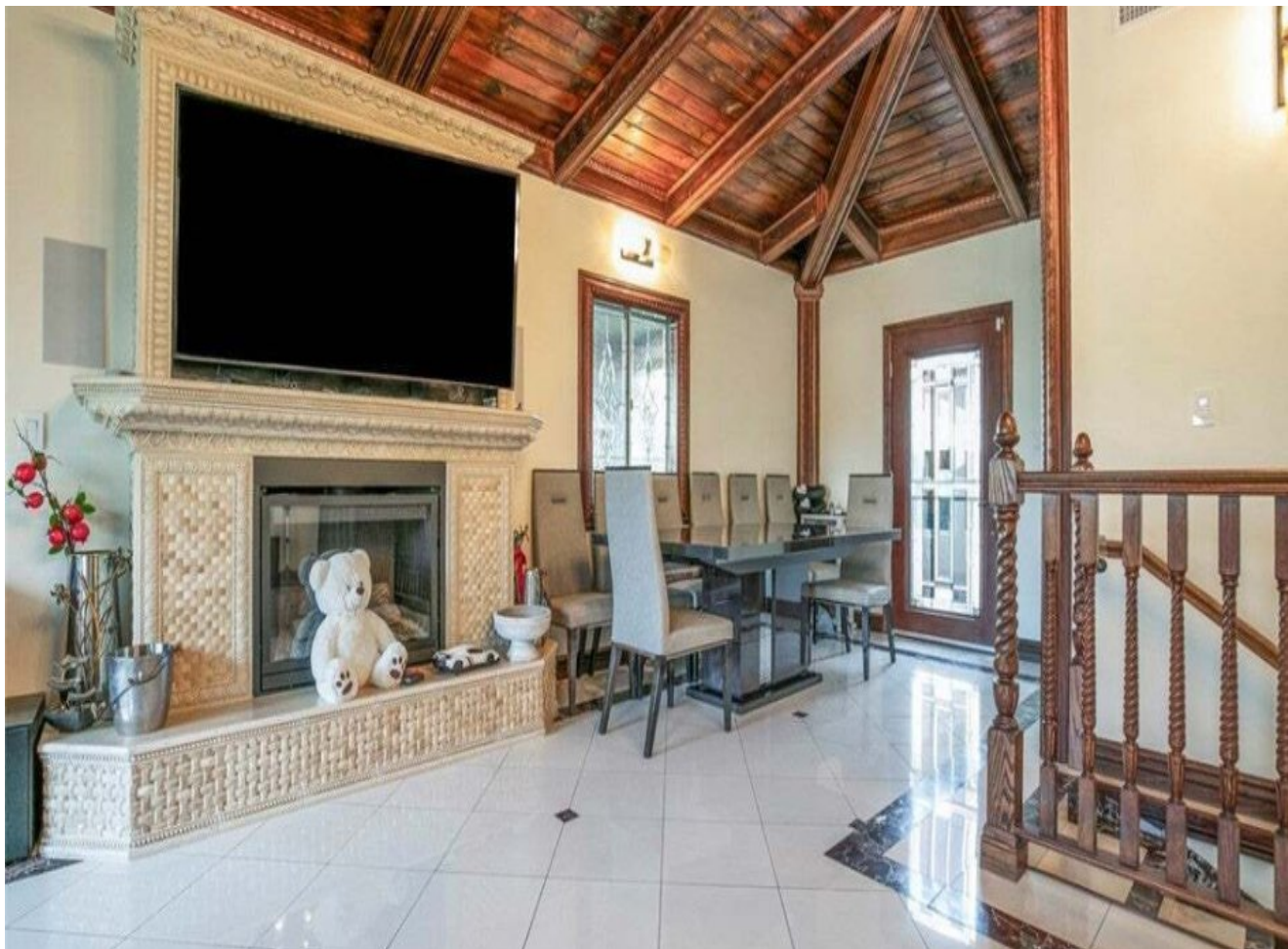
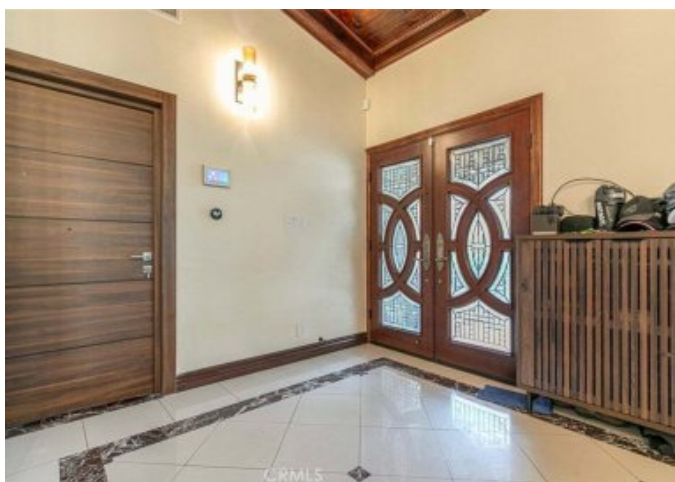
6  5 

## Description

Glendale Gem North of Kenneth! Welcome to this stunning Glendale retreat tucked along the palm tree-lined Western Avenue, neighboring from prestigious Brand Park. This home immediately impresses with its exquisite stonework, stamped concrete driveway, beautiful curb appeal, wrought-iron gate, and dual-pane windows. Enjoy relaxing on the spacious front patio before stepping through elegant double doors into a home filled with character and upgrades. Inside, you'll find gorgeous tile flooring, high ceilings with original exposed wood beams, and a hand-built fireplace accented with mosaic stone and stained glass details. The open floor plan seamlessly connects living spaces, creating a perfect flow for entertaining. The chef's kitchen features an oversized island, granite countertops, tile backsplash, double built-in refrigerators, and a freestanding stainless-steel range hood. Adjacent is the dining area overlooking the backyard and a second fireplace in the cozy informal living room. Downstairs, a spacious basement offers two large rooms, a half bath, and a laundry area—ideal for storage, a home gym, or creative workspace. All bathrooms have been recently remodeled with high-end materials and fixtures, adding a modern touch to this timeless home. Step outside through double doors to your own private oasis featuring tile flooring, a custom-built BBQ station with stainless-steel appliances, a covered seating area with high ceilings, exposed wood beams, a large TV entertainment system, outdoor heater, and automatic roller shades. The aqua-blue pool and spa complete this entertainer's paradise. The converted garage offers incredible flexibility with custom cabinetry, tile flooring, a full bathroom, and a kitchenette—perfect for guests or a studio setup. Don't miss your chance to own this beautiful Glendale gem that blends charm, craftsmanship, and modern luxury—all just moments from Brand Park!





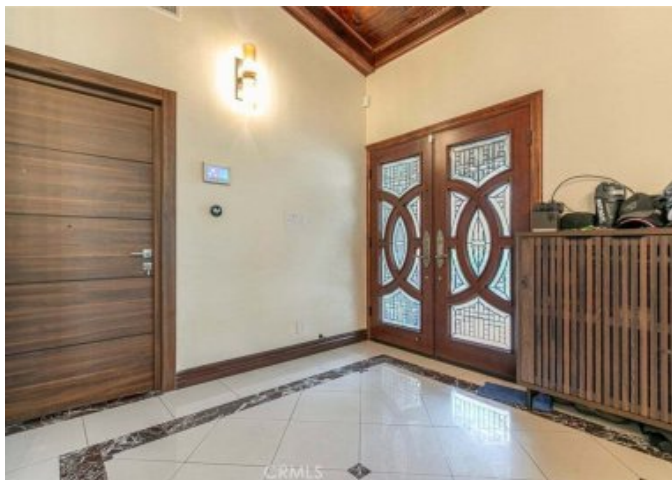




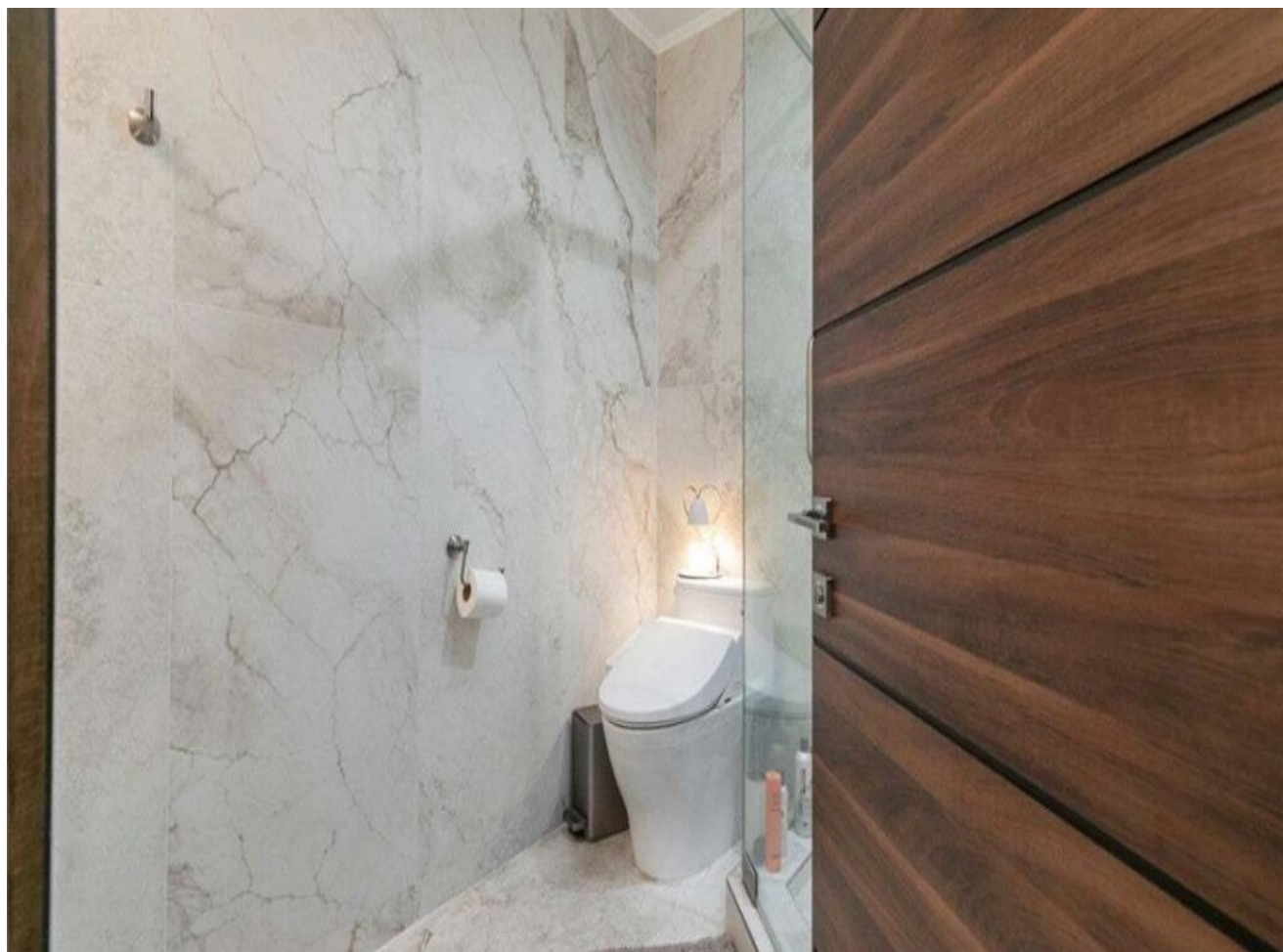
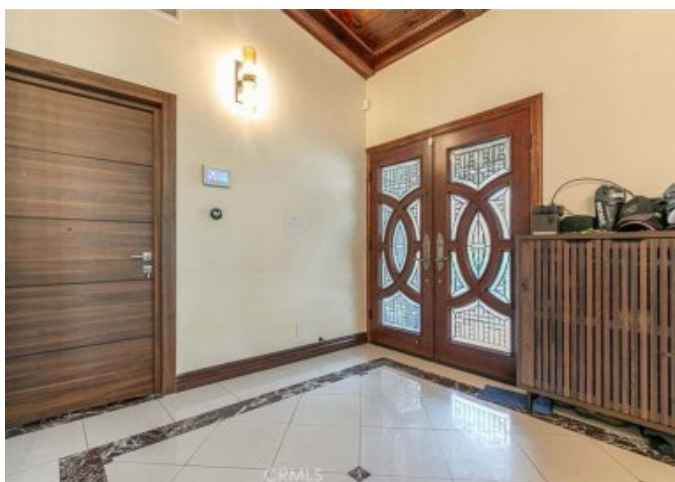




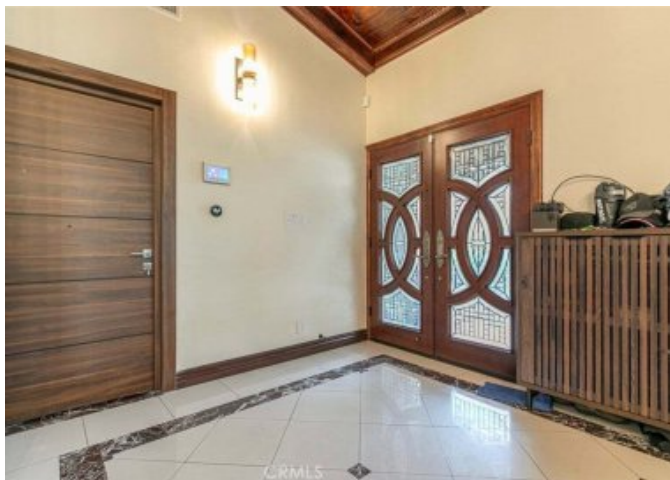
CRMLS



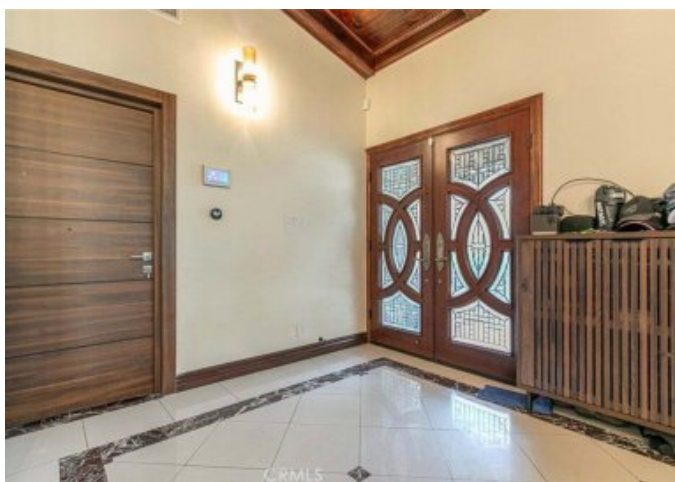




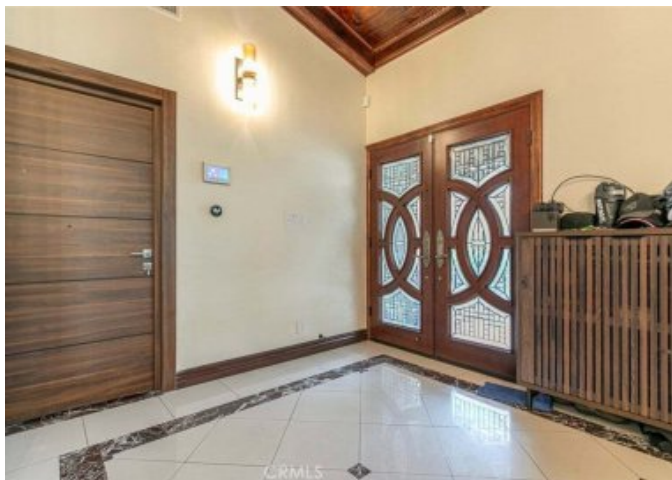




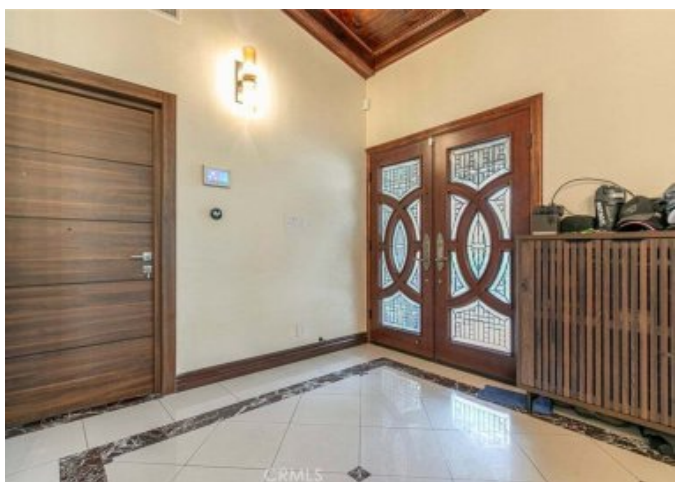






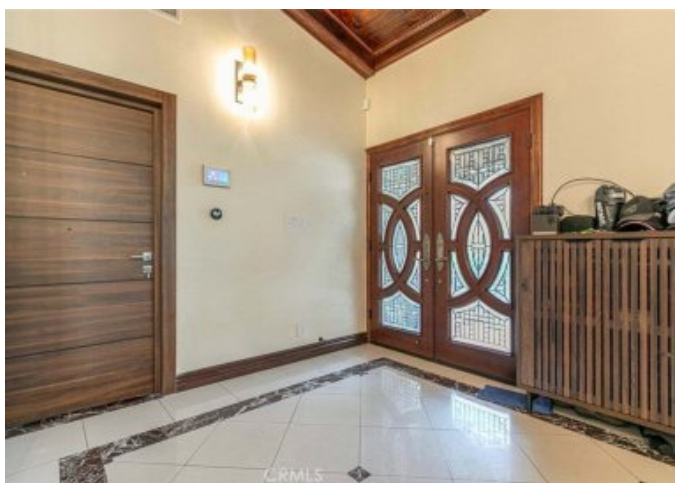




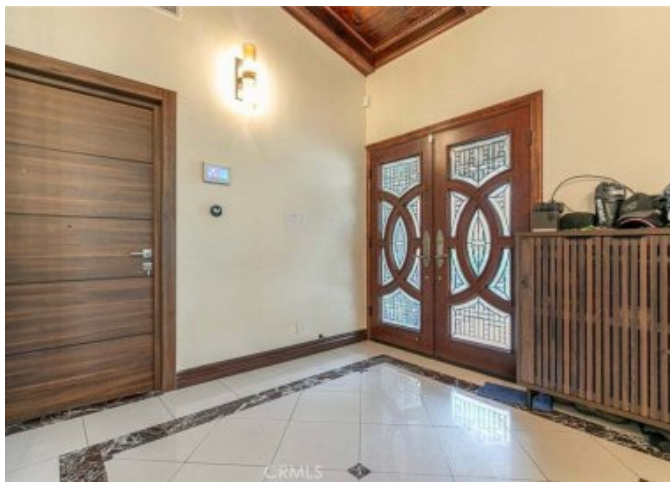




CRMLS



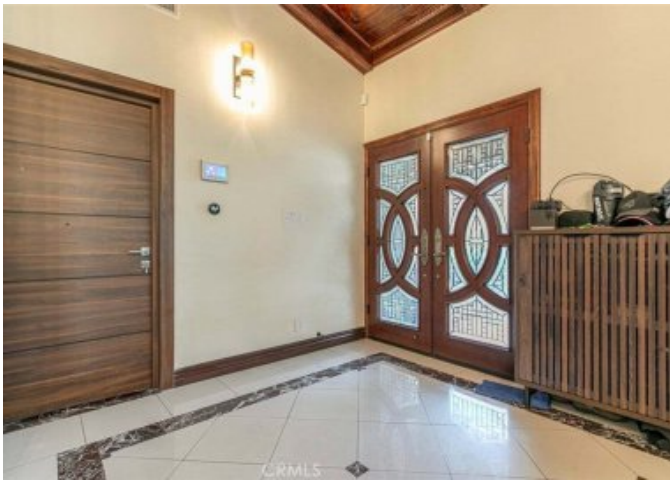








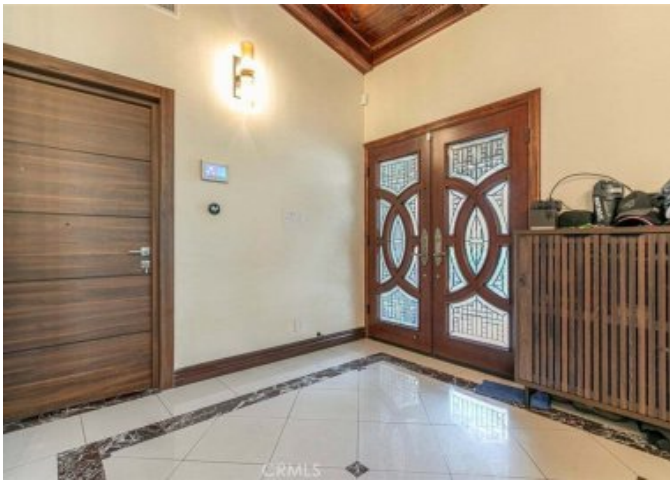




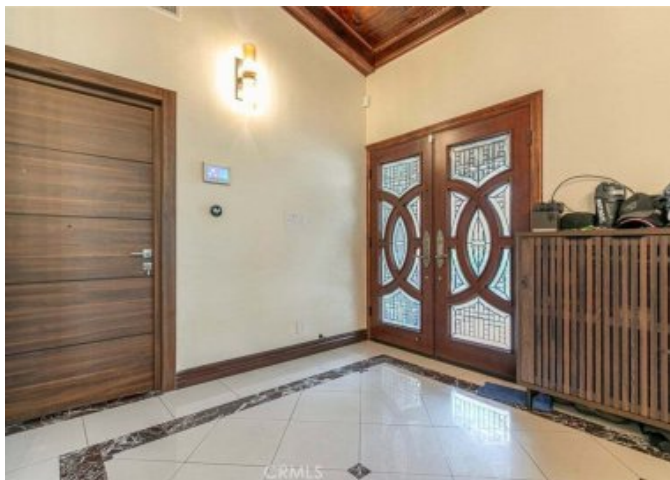




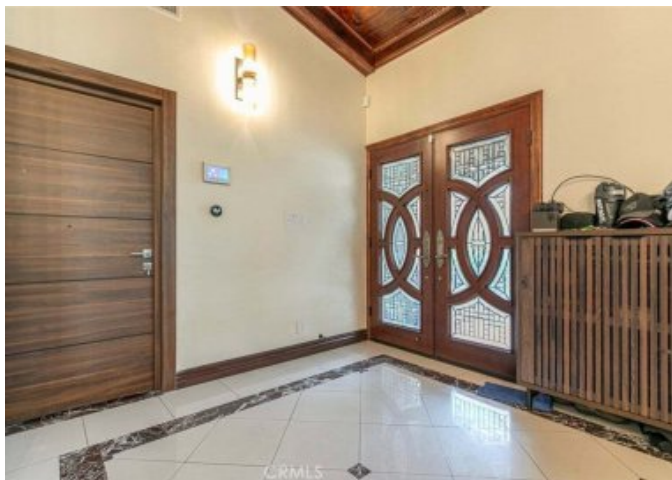












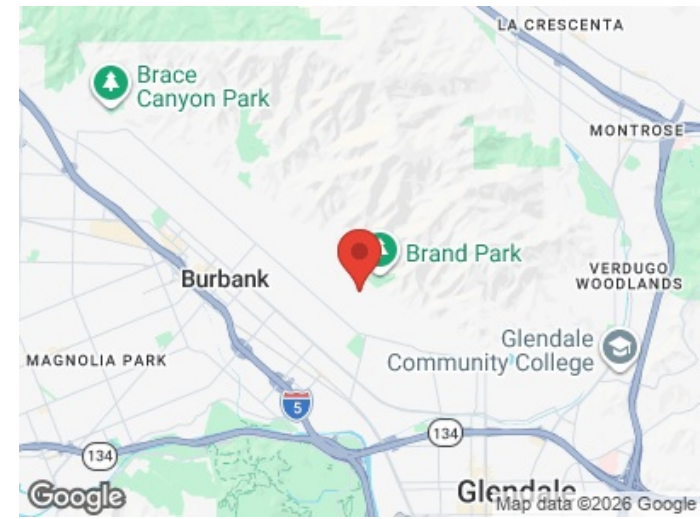
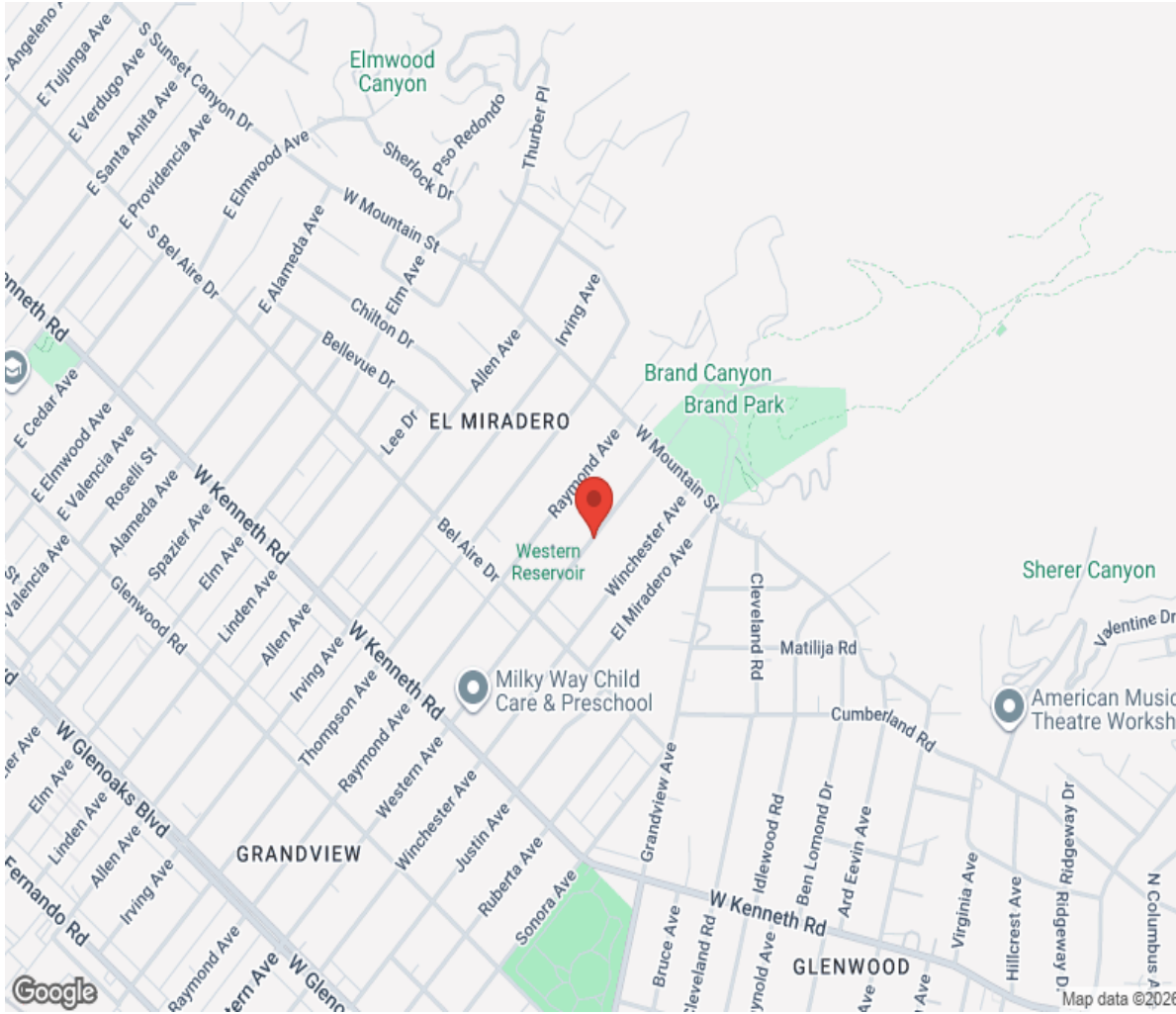


CRMLS





# Location



**Hamptons**

INTERNATIONAL

**+44 (0)20 8618 4551**

**[international@hamptons.co.uk](mailto:international@hamptons.co.uk)**

**[www.hamptons-international.com](http://www.hamptons-international.com)**