

# Hamptons

INTERNATIONAL



## St. Leonards Terrace London SW3

4 🏠 3 🚗 3 📧

**£30,000**

(£21,450)

## Property details

---



### St. Leonards Terrace London SW3

4 🏠 3 🚗 3 📄

**£30,000**  
**(£21,450)**

## Description

An immaculately presented four bedroom house moments from Sloane Square, with wonderful views of Burton Court. The house is set over four floors comprising on the raised ground floor a beautifully designed kitchen and dining room, guest WC and access to a pretty patio garden. On the lower floor there is a study leading to further room currently being used as home gym, double bedroom with shower en suite and laundry room with washer and dryer. On the first floor there is a large double reception room with excellent light, gas fire place, beautiful cornicing and views out to Burton Court. The second floor comprises a spacious master suite with walk through wardrobe and bathroom. The top floor offers two further double bedrooms and bathroom. The house is offered unfurnished and additional benefits include a Savant Media System, alarm, video cameras and access to Burton Court (cost involved). To check broadband and mobile phone coverage please visit Ofcom here [ofcom.org.uk/phones-telecoms-and-internet/advice-for-consumers/advice/ofcom-checker](http://ofcom.org.uk/phones-telecoms-and-internet/advice-for-consumers/advice/ofcom-checker) Situation St Leonards Terrace is a beautiful terrace running alongside the stunning green spaces of Burton Court and just south of the Kings Road. The Kings Road is one of the most popular roads in Central London with many exclusive shops, bars, restaurants and boutiques. The nearest Underground Station is Sloane Square (Circle and District lines 0.5 miles away). 4 Bedrooms Dining Room Large Reception Unfurnished Patio Garden Alarm Study House Council Tax Band H



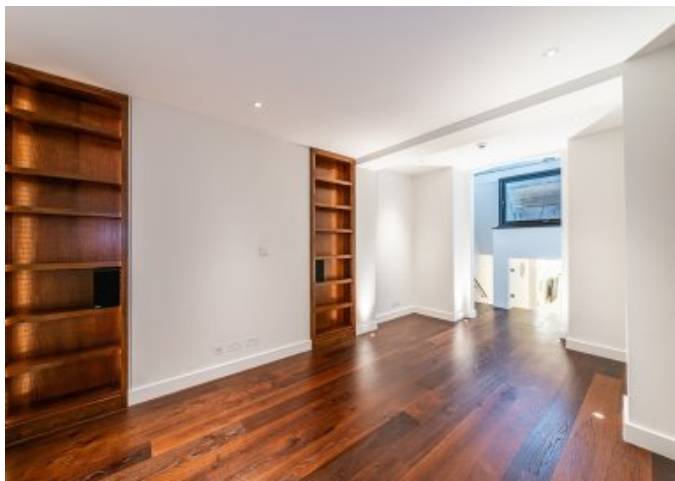












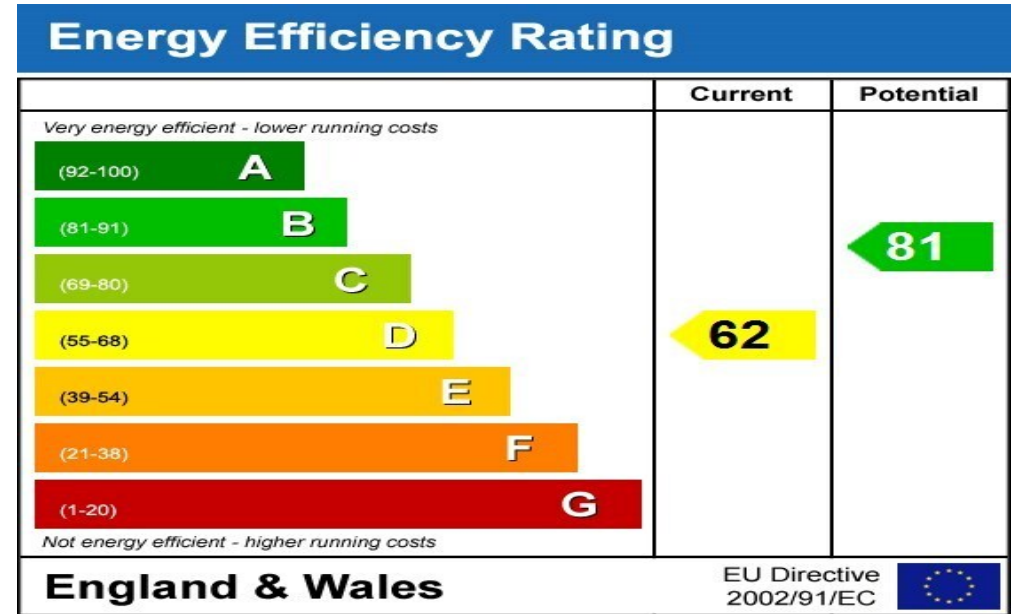












# Floor plan

## ST. LEONARDS TERRACE

Approximate Gross Internal Area (excluding reduced headroom)

Lower Ground floor = 915 sq. ft. (85.0 sq. m.)

Ground floor = 558 sq. ft. (51.8 sq. m.)

First floor = 554 sq. ft. (51.5 sq. m.)

Second floor = 552 sq. ft. (51.3 sq. m.)

Third floor = 534 sq. ft. (49.6 sq. m.)

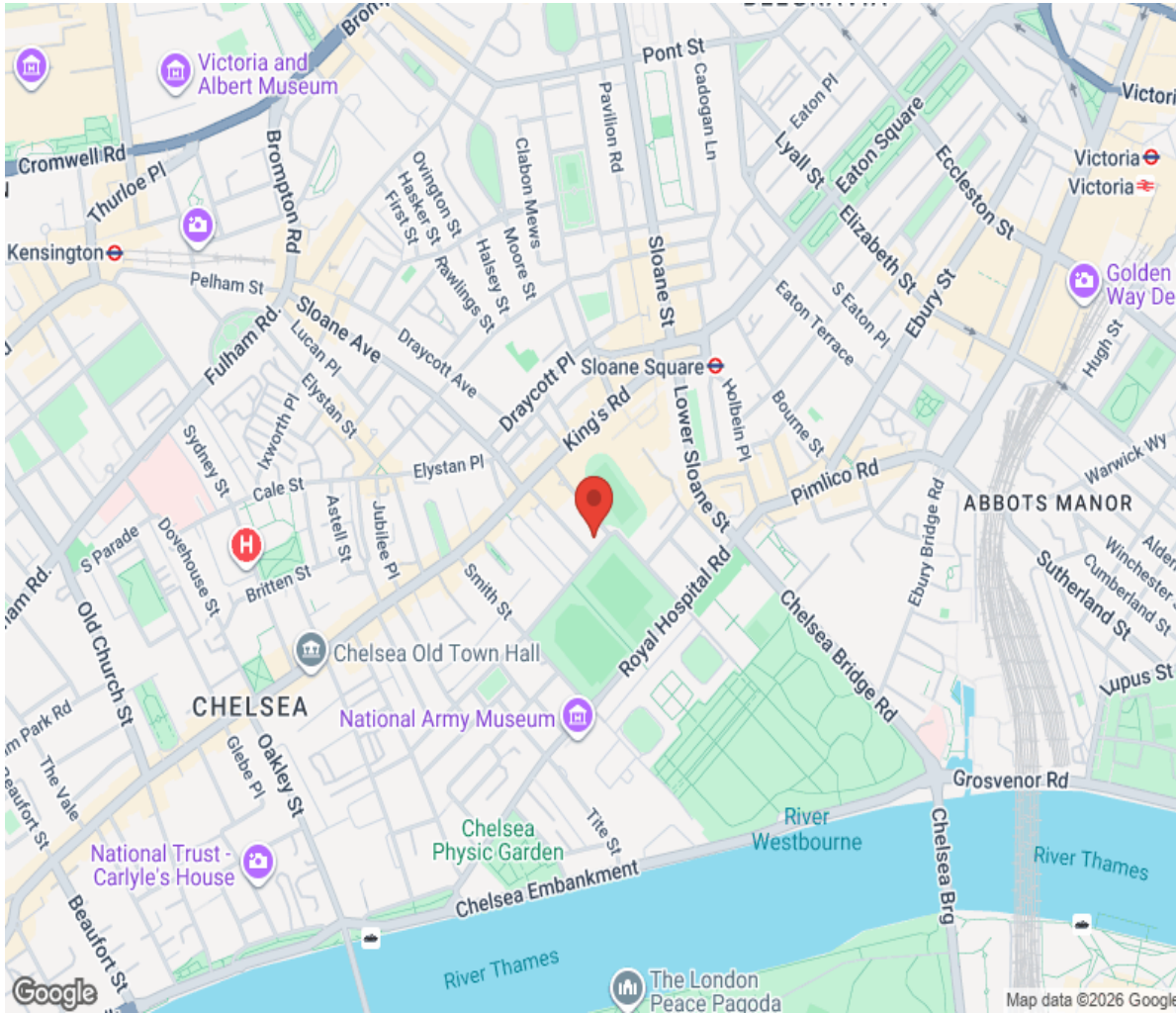
Reduced headroom = 15 sq. ft. (1.4 sq. m.)

Total = 3128 sq. ft. (290.6 sq. m.)



Drawn for illustration and identification purposes only

# Location



# Hamptons

INTERNATIONAL

**+44 (0)20 8618 4551**

**[international@hamptons.co.uk](mailto:international@hamptons.co.uk)**

**[www.hamptons-international.com](http://www.hamptons-international.com)**