

Hamptons

INTERNATIONAL



Northcote Road, London, SW11

2 2

£650,000

(£650,000)

Property details



Key features

- **2 bedroom accessible apartment**
- **Two balconies**
- **822 sqft**
- **Located on the iconic Northcote Road**
- **250 year lease**
- **Secure bike storage**
- **Move in ready**

Attributes

- **Apartment**

Northcote Road, London, SW11

2 🏠 2 📄

£650,000
(£650,000)

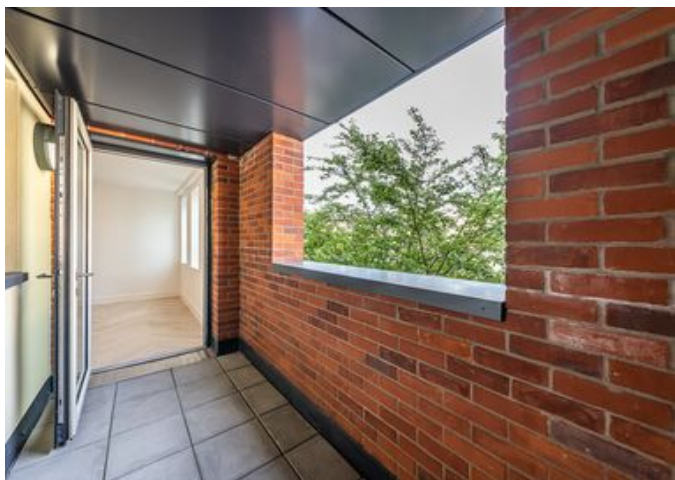
Description

An exceptional 2-bedroom apartment with two private balconies, fully adapted for accessibility and perfectly positioned on Northcote Road in the heart of Battersea. This move-in-ready home offers modern living in a prime location. Contact Hamptons today to arrange your viewing. This beautifully designed first-floor apartment offers 822 sqft of stylish, accessible living. Thoughtfully adapted for ease of movement, the home features a bright and airy open-plan layout, enhanced by multiple windows that flood the living and kitchen area with natural light. Two private balconies - one overlooking vibrant Northcote Road and the other tucked away at the rear - provide perfect spots to unwind and enjoy your surroundings. The interior combines subtle elegance with modern functionality. A sleek, designer kitchen with AEG integrated appliances and generous worktop space flows seamlessly into the living area, creating a welcoming hub for entertaining or relaxing. Engineered timber flooring throughout the main living spaces, neutral carpets in the bedrooms, and oversized tiles in the bathrooms complete the contemporary finish. Comfort is at the heart of this home, with underfloor heating ensuring clean, uncluttered layouts. The apartment is served by a lift and includes access to a dedicated bike store. Outside Two private balconies. One overlooking The Northcote Road and one to the rear of the property. Situation 155 Northcote Road is ideally situated in the heart of Battersea, one of South West London's most desirable and vibrant neighbourhoods. Northcote Road is world-famous for its eclectic mix of independent cafés, restaurants, artisan bakeries, boutiques and the renowned Northcote Road Antiques Market. It sits between the green open spaces of Clapham Common and Wandsworth Common, offering a lively high-street atmosphere and strong community appeal. Transport connections are excellent, with Clapham Junction- one of London's busiest and best-connected stations- just a 14-minute walk (0.6 miles) away. Frequent services provide rapid access to Victoria, Waterloo and beyond. A choice of bus routes, link the property with neighbouring areas such as Chelsea, Vauxhall and central London. The recently opened Battersea Power Station Underground (Northern Line extension) also provides fast access to the West End and the City. Iconic Battersea attractions are all easily accessible. Battersea Power Station, with its world-class shopping, dining and riverside experiences, can be reached in around 25-30 minutes by bus or train. Battersea Park, offering 200 acres of green space, gardens and the famous Peace Pagoda, is approximately 25 minutes away. Cultural highlights such as Battersea Arts Centre and the beloved Battersea Dogs & Cats Home are also within easy reach, making this an attractive destination for professionals, families and visitors alike. With its thriving retail scene, outstanding transport links and proximity to some of Battersea's most celebrated landmarks, 155 Northcote Road offers an exceptional opportunity in one of London's most sought-after areas.

Property Ref Number: HAM-62159









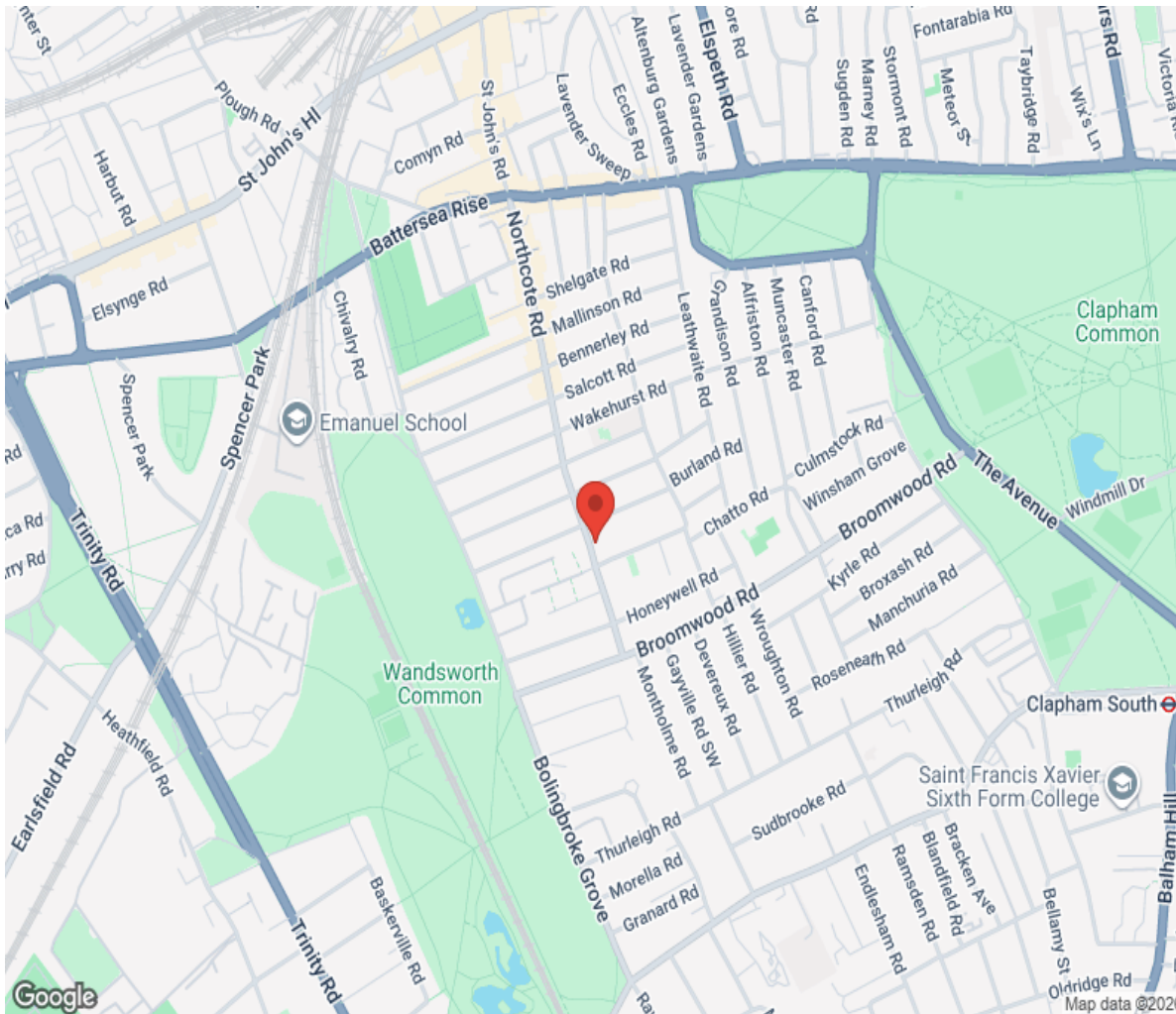
Floor plan

THE ADVANTAGE
Approximate Gross Internal Area
822 sq. ft. (76.4 sq. m.)



This plan is for layout guidance only. Not drawn to scale unless stated. Windows and door openings are approximate. Whilst every care is taken in the preparation of this plan, please check all dimensions, views and contents before making any decisions about your purchase.

Location



Hamptons

INTERNATIONAL

+44 (0)20 8618 4551

international@hamptons.co.uk

www.hamptons-international.com