

# Hamptons

INTERNATIONAL



**Langton Street London SW10**

4  4  1 

**£20,000**

**(£11,050)**

## Property details

---



### Langton Street London SW10

4 🏠 4 🚗 1 📄

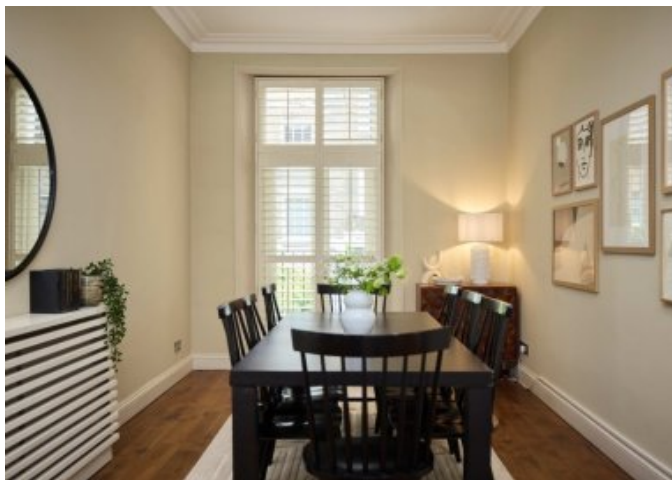
**£20,000**  
**(£11,050)**

## Description

SHORT LET: Positioned in a quiet and well-connected pocket of Chelsea, this inviting residence offers comfortable living with the convenience of local amenities close by. The home presents a practical layout with well-proportioned rooms, providing flexibility for everyday living and entertaining. Natural light enhances the interior spaces, while the low-maintenance design makes it an ideal option for families, professionals, or investors alike. The property is conveniently located within easy reach of schools, shops, public transport, and Chelsea's popular coastline, combining lifestyle appeal with everyday practicality. To check broadband and mobile phone coverage please visit Ofcom here [ofcom.org.uk/phones-telecoms-and-internet/advice-for-consumers/advice/ofcom-checker](https://www.ofcom.org.uk/phones-telecoms-and-internet/advice-for-consumers/advice/ofcom-checker) Situation Langton Street is a well-regarded street on the western side of the Ten Acre Estate, known for its elegant part stucco architecture, and spacious family homes with gardens. Langton Street runs south into King's Road, whilst Fulham Road, with the many shops, bars and restaurants is a short walk to the north. Well Proportioned Chelsea Family House 5 Bedrooms and 4 Bathrooms (1 En Suite) Formal Drawing Room Spacious Family Kitchen Breakfast Room Landscaped West Facing Garden 2463 sqft (228 sqm)











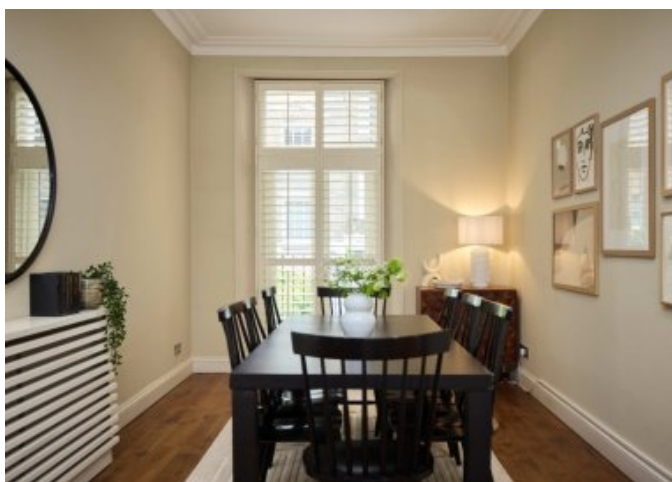
















## Energy Efficiency Rating

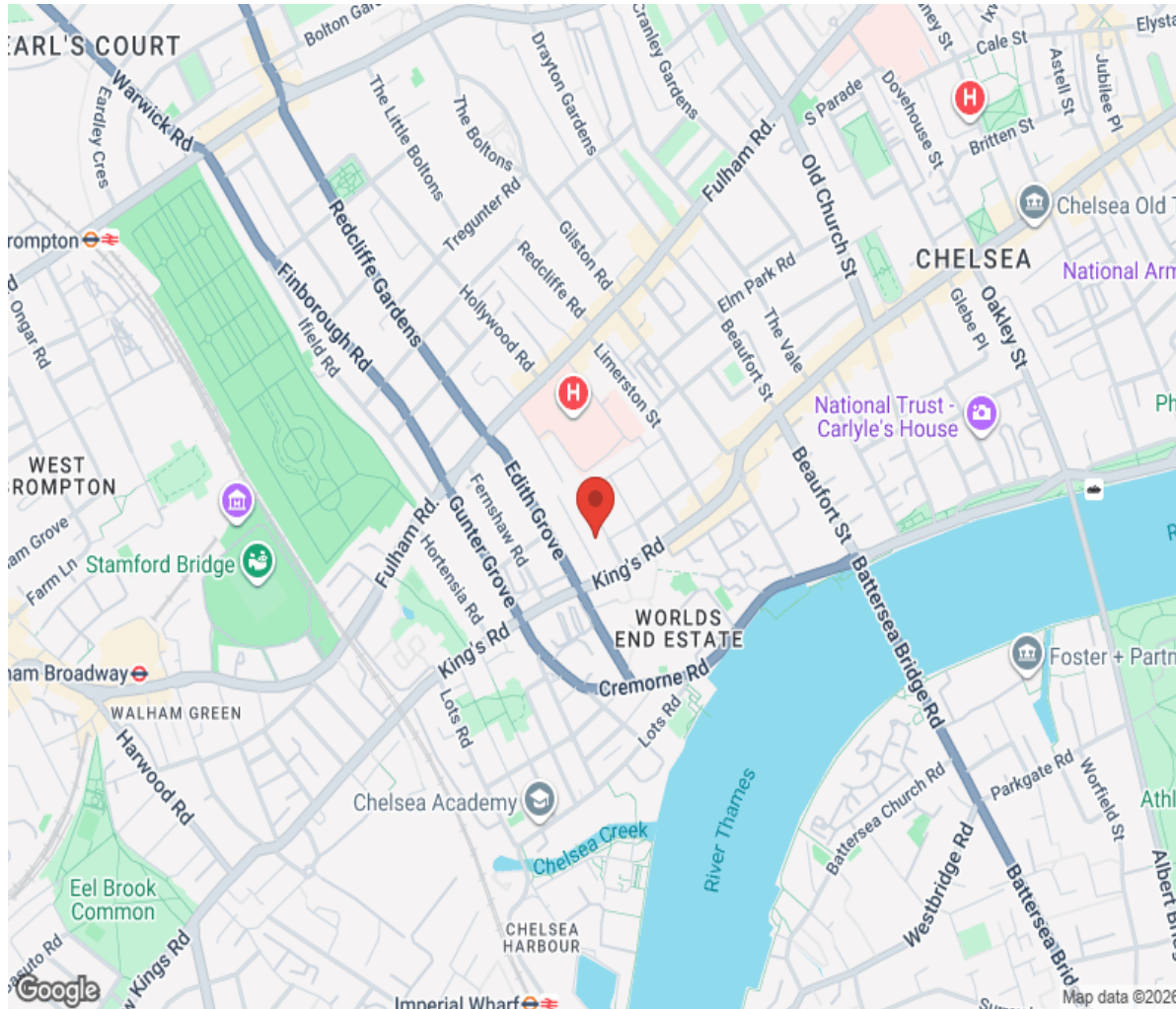
**EPC Pending**

**England & Wales**

EU Directive  
2002/91/EC



# Location



# Hamptons

INTERNATIONAL

**+44 (0)20 8618 4551**

**[international@hamptons.co.uk](mailto:international@hamptons.co.uk)**

**[www.hamptons-international.com](http://www.hamptons-international.com)**