

Hamptons

INTERNATIONAL



Choumert Road, London, SE15

5 🏠 3 🚗 1 📧

£1,750,000

(£1,750,000)

Property details



Key features

- **5 Bedrooms**
- **3 Bath/Shower Rooms**
- **Double Reception Room**
- **Kitchen/Dining Room**
- **Utility Room**
- **Garden Room**

Choumert Road, London, SE15

5 🏠 3 🚗 1 📧

£1,750,000
(£1,750,000)

Description

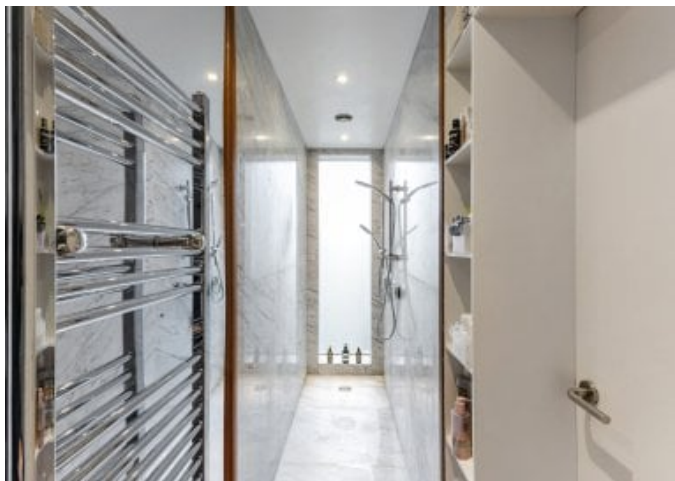
A wonderful, 5 bedroom, period house in a popular residential street in Peckham, extending to over 2,500 sq ft with a south facing garden. A wonderfully stylish, period property spread over three floors and extending to over 2,500 sq ft. The ground floor is open plan with the double-reception room leading to the extended kitchen which has doors to the south-facing rear garden which has a separate garden office. The loft has been extended to create an extra bedroom with en-suite shower room. Situation Situated on the edge of the Holly Grove conservation area the house is moments away from Bellenden Road which contains a delightful array of shops, cafes and restaurants. Peckham Rye Station is 0.3 miles away with direct trains to Blackfriars, London Bridge, Victoria, St Pancras International and is also on the East London Overground Line with direct trains to Shoreditch High Street, Canada Water and Clapham Junction. The area is also well served by excellent primary schools such as Belham and Bellenden. Property Ref Number: HAM-62390







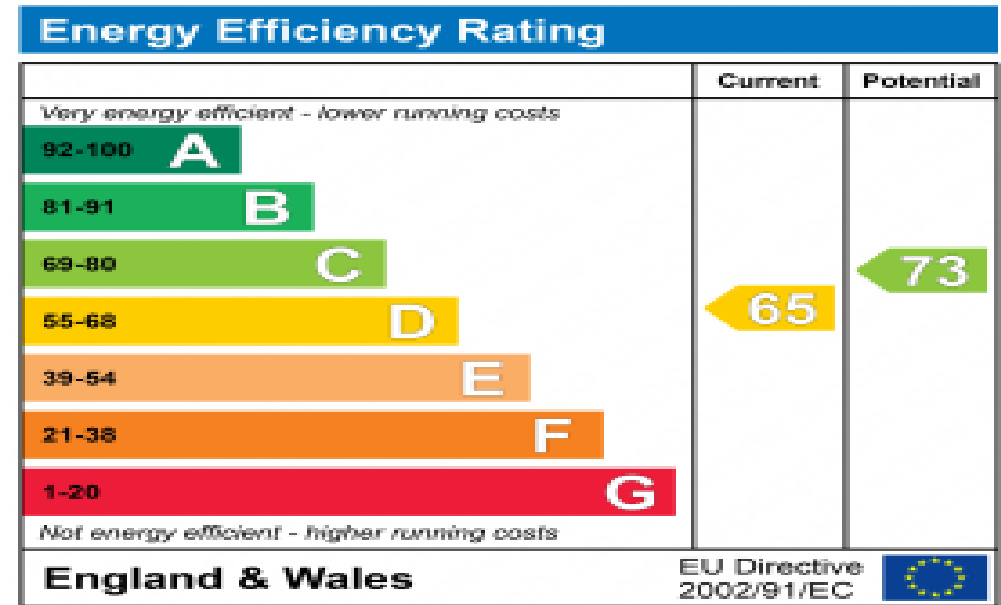












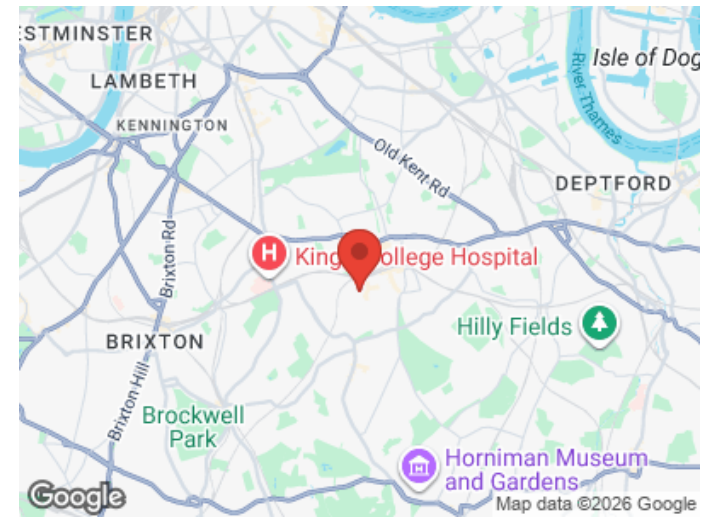
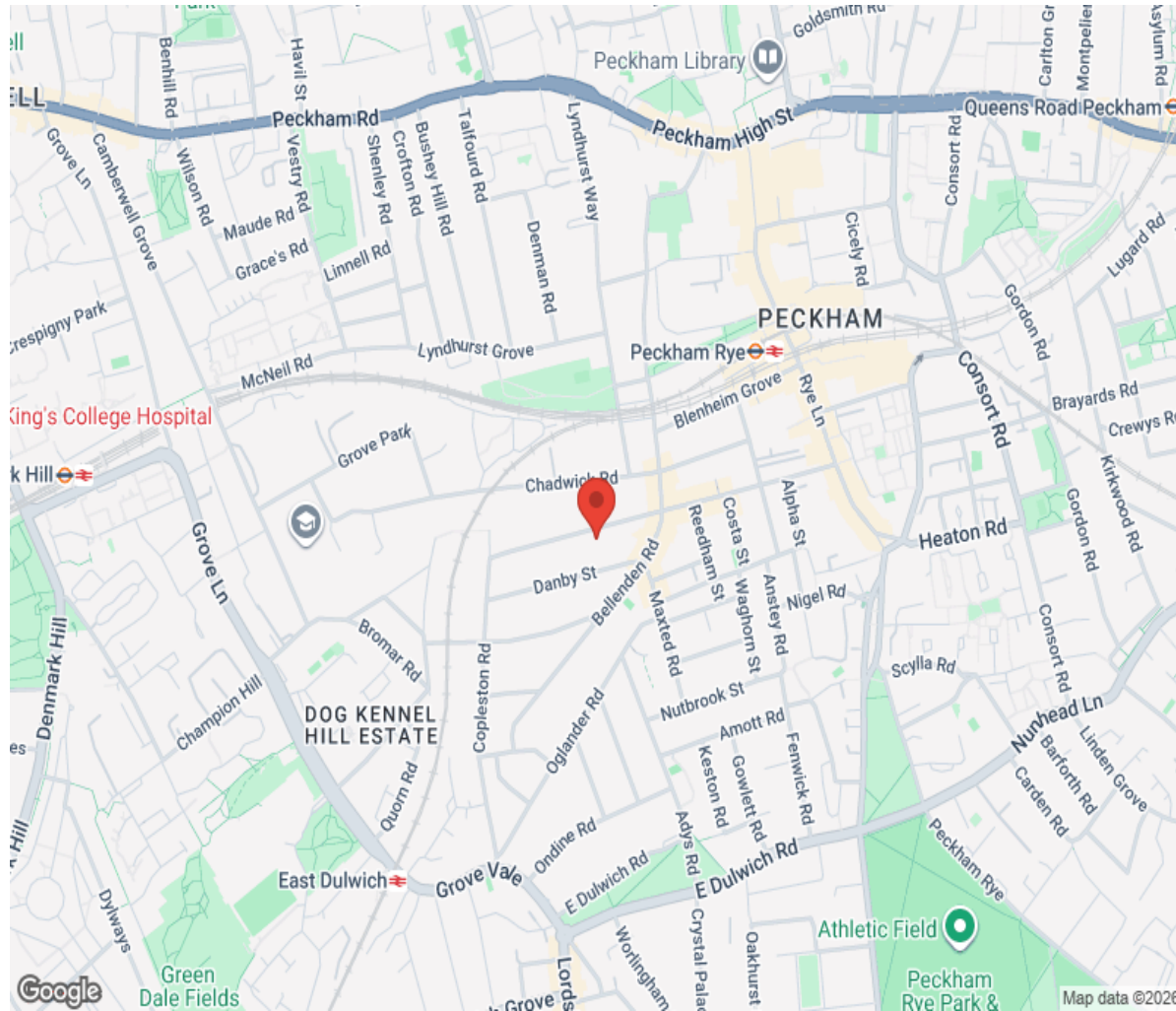
Floor plan

Carer = 11.8 sqm / 127 sq ft
Outbuildings = 18.6 sqm / 200 sq ft
Total = 239.3 sqm / 2575 sq ft



 This floor plan has been drawn in accordance with RICS Property Measurement, 2nd edition.

Location



Hamptons

INTERNATIONAL

+44 (0)20 8618 4551

international@hamptons.co.uk

www.hamptons-international.com