


Hamptons

INTERNATIONAL



Beaufort Close, London, SW15

4  2  2 

£1,600,000

(£1,595,000)

Property details



Key features

- **Full Renovation Undertaken in 2021**
- **Neo-Georgian House**
- **Gated Development**
- **Three Bedrooms**
- **Formal Reception Room**
- **Study/Bedroom**
- **Excellent Open Plan Kitchen/Reception**
- **Walk in Pantry**
- **Boot/Laundry Room**
- **Family Bathroom**

Beaufort Close, London, SW15

£1,600,000

(£1,595,000)

4 🏠 2 🚗 2 📧

Description

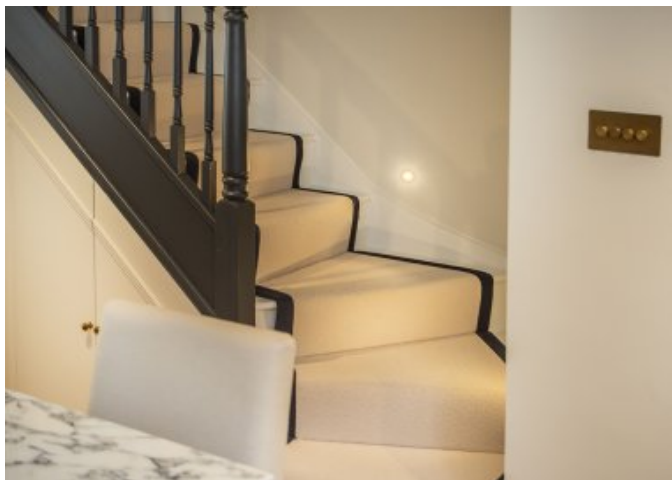
An immaculately presented house within the sought-after neo-Georgian Lynden Gate development, offering extensively refurbished accommodation arranged over three floors. An immaculately presented house within the established neo-Georgian Lynden Gate development, offering extensively refurbished accommodation arranged over three floors. A comprehensive renovation completed in 2022 has transformed the property into a truly exceptional home, finished to an outstanding standard and featured in Period Living and the February edition of Country Homes & Interiors magazine. The upper ground floor opens with a welcoming marble-floored entrance hall leading to a versatile study/bedroom and an elegant formal reception room, showcasing a Carrara marble fireplace, engineered wood flooring and a lovely outlook over the private garden. A guest cloakroom completes this level. On the first floor are three bedrooms, including a principal suite with bespoke oak-lined wardrobes by John Lewis of Hungerford and a luxurious en-suite shower room featuring a Neptune double sink vanity and beautiful marble tiling. The family bathroom is equally impressive, fitted with Lefroy Brooks fixtures and finished to a superb standard. The lower ground floor is dedicated to a spectacular open-plan kitchen, dining and living area — an ideal space for family life and entertaining. The bespoke kitchen features marble countertops and island, Miele ovens and downdraft hob, a Bosch integrated fridge/freezer and dishwasher, and a walk-in pantry. This level benefits from underfloor heating throughout and Maxlight sliding doors leading to the landscaped private garden. Adjoining the kitchen is a boot/laundry room with space for a washer and dryer, and a secondary front entrance. Outside Externally, the private walled garden has been thoughtfully landscaped with established planting and paved for low-maintenance living, enhanced by subtle outdoor lighting. Situation Beaufort Close is situated within the established private development of Lynden Gate. Positioned in the heart of Putney Heath this house boasts the feeling of countryside within easy reach of Putney. The green open spaces of the Heath, Richmond Park and Wimbledon Common are close by, along with the local amenities such as the well-regarded Telegraph public house. The development holds around 70 beautiful neo-Georgian houses with a porter's cabin located at the front gates, providing security and assistance Monday to Friday. Property Ref Number: HAM-61676







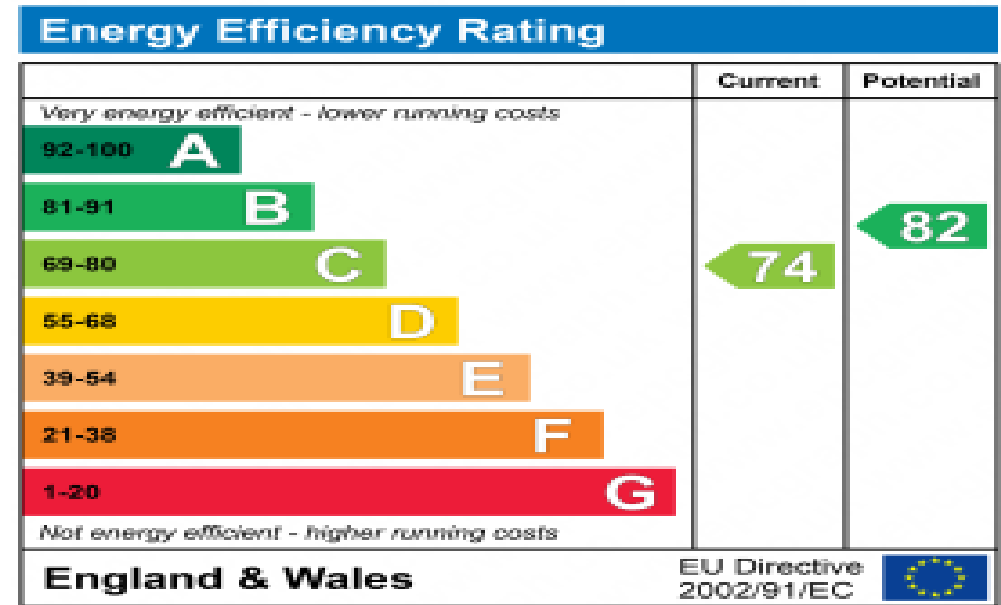












Floor plan

BEAUTIFUL CLUSE

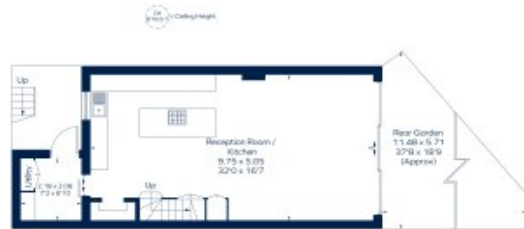
Approximate Gross Internal Area (excluding Void)

Lower Ground floor = 606 sq. ft. (56.3 sq. m.)

Raised Ground floor = 541 sq. ft. (50.3 sq. m.)

First floor = 529 sq. ft. (49.2 sq. m.)

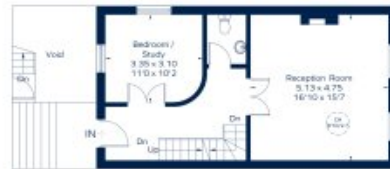
Total = 1676 sq. ft. (155.8 sq. m.)



Lower Ground Floor



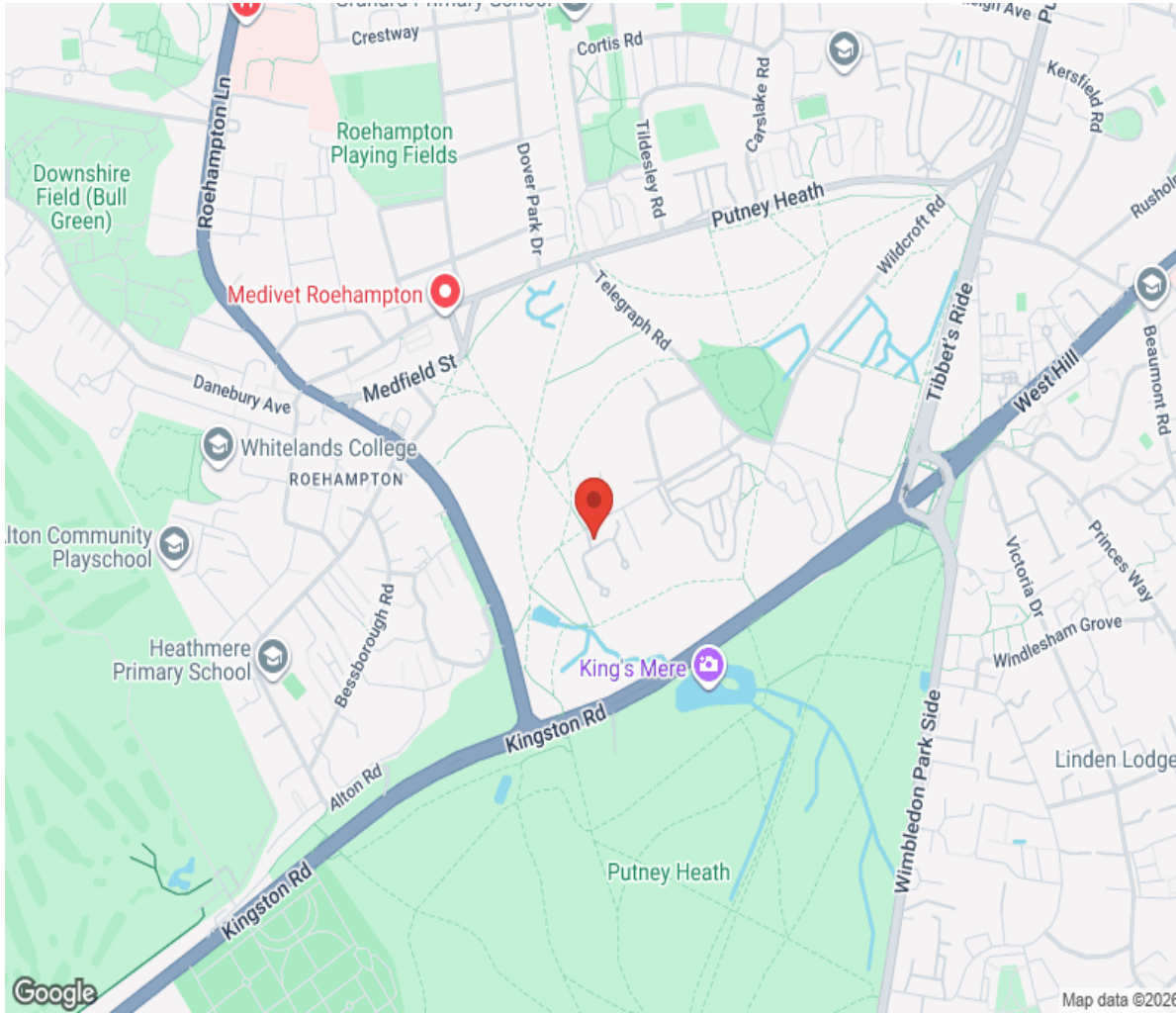
First Floor



Raised Ground Floor

This plan is for layout guidance only. Not drawn to scale unless stated. Windows and door openings are approximate. All the every care is taken in the preparation of this plan. Please check all dimensions, doors and windows before making any decisions about your home.

Location



Hamptons

INTERNATIONAL

+44 (0)20 8618 4551

international@hamptons.co.uk

www.hamptons-international.com