

# Hamptons

INTERNATIONAL



**210 166th St NE, Bradenton, FL 34212**

4 🏠 3 🏡

**£820,000**  
**(\$1,095,000)**

## Property details



### Key features

- **Cooling: Central A/C**
- **Garage Count: 3 Car Garage**
- **Pool Description: Pool**
- **Sewer: Public**
- **Special Program: Global Luxury**
- **Water: City Water**

### Attributes

-  **Swimming pool**
-  **Garage**
-  **Garden**

**210 166th St NE, Bradenton, FL 34212**

4  3 

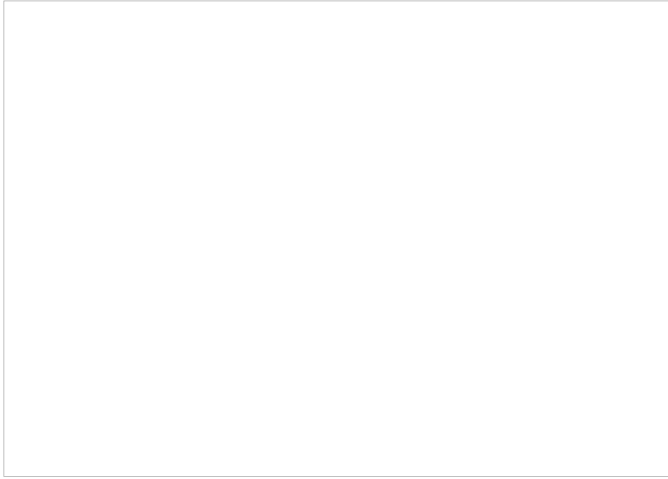
**£820,000**  
**(\$1,095,000)**

## Description

True Florida living with style, space, and serene views. Perfectly positioned on an expansive 0.53-acre lot overlooking a peaceful pond and preserve, this stunning estate home is located in the highly sought-after Rye Wilderness Estates community. Spanish-style architecture and a charming arched front porch create an inviting first impression, while thoughtful upgrades and timeless design continue throughout this spacious 3,451-square-foot Egret model. This four-bedroom, three-bathroom home with a dedicated office features a tile roof, paver driveway, and a three-car side-entry garage, along with newly updated pool equipment and two brand-new AC systems for added peace of mind. Upon entering through double eight-foot front doors, you are welcomed by a grand foyer with soaring twelve-foot ceilings, ten-foot ceilings throughout the rest of the home, and elegant tray ceiling accents. To the left, a formal dining area flows seamlessly into an oversized living room, where sliding glass doors frame tranquil lanai, pond, and preserve views. The living room connects to a beautifully designed butler's pantry and wet bar with long counters, sink, and a striking tile feature wall, making it ideal for entertaining. Continuing into the heart of the home, the gourmet kitchen impresses with a large center island, gorgeous granite countertops, breakfast bar seating, solid wood cabinetry with pull-outs, under-cabinet lighting, and a vented decorator hood. The kitchen opens to a spacious family room with additional sliding doors leading to the outdoor living area. The split floorplan offers privacy, with the second and third bedrooms sharing a full interior bathroom, while the office is conveniently located just off the front entry. The expansive primary suite is a true retreat, featuring tray ceilings, private lanai access, a large California-style walk-in closet plus additional open storage, and a spa-inspired en-suite bathroom with dual vanities, a makeup area, garden tub, and an oversized walk-in shower. A spacious laundry room with extra wood cabinetry adds both function and storage. Step outside to an impressive covered lanai overlooking the heated pool and paver deck, creating the perfect outdoor oasis for enjoying Florida's year-round sunshine and breathtaking preserve views. Located just north of Rye Wilderness Preserve, residents can enjoy kayaking and canoeing nearby. The community offers no CDD fees, a low HOA, convenient interstate access, proximity to Lakewood Ranch, top-rated schools, world-famous beaches, Sarasota, St. Petersburg, and Tampa International Airport.







































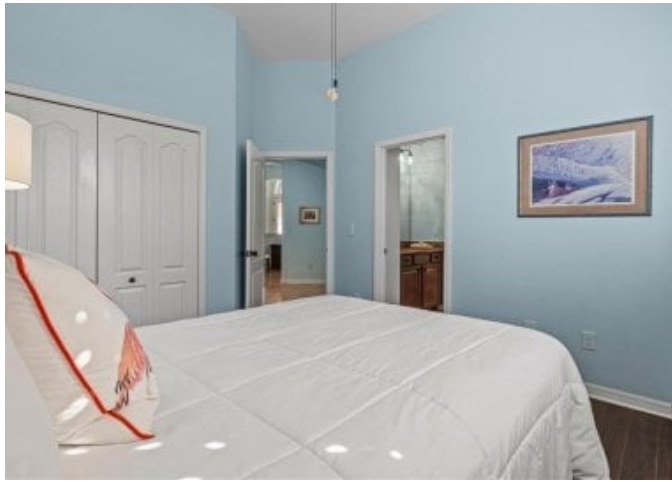
































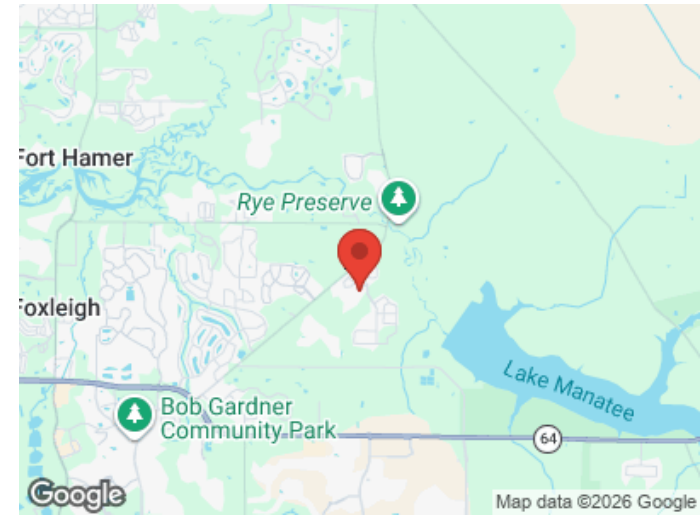
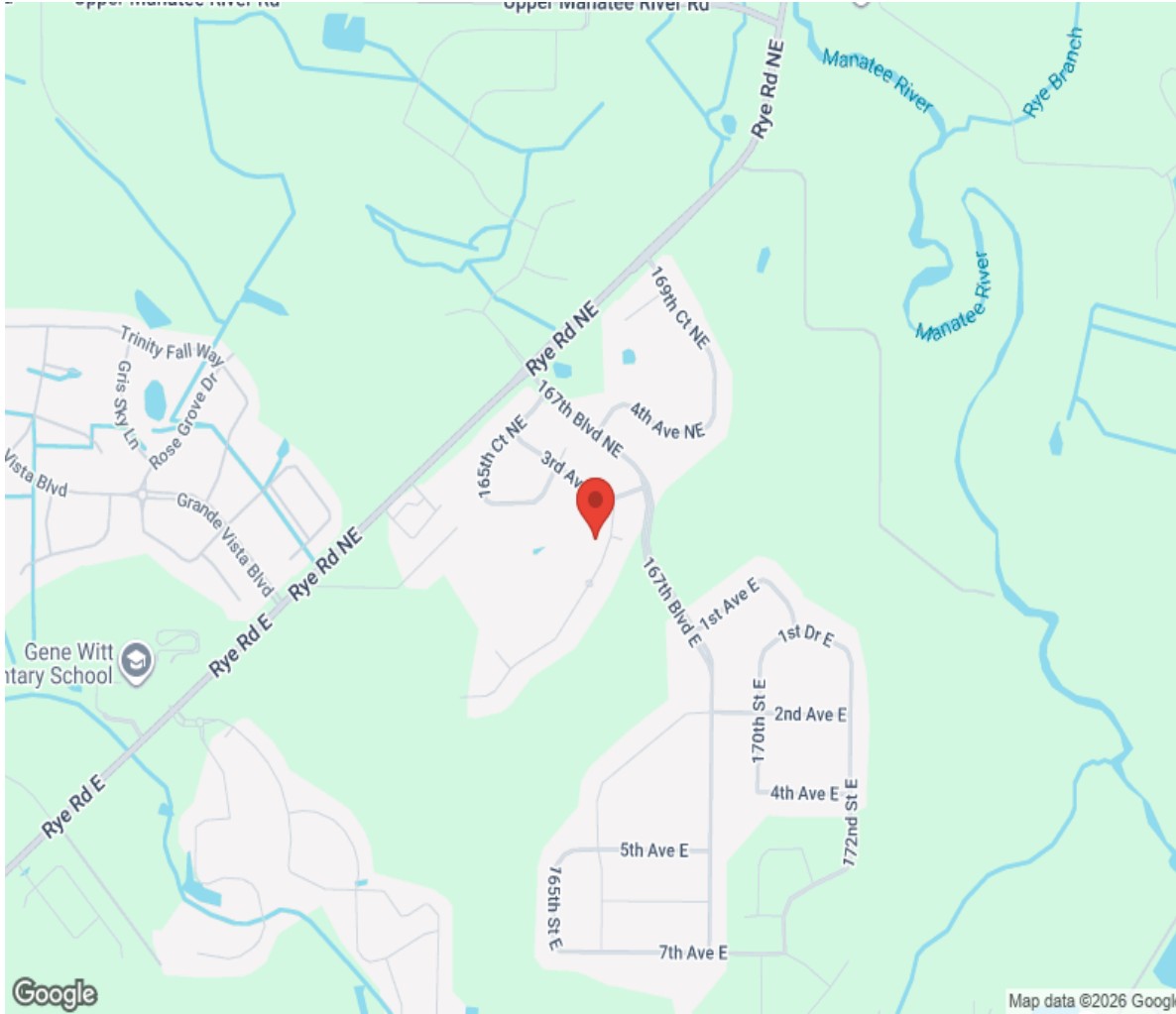






# Location

---



**Hamptons**

INTERNATIONAL

**+44 (0)20 8618 4551**

**[international@hamptons.co.uk](mailto:international@hamptons.co.uk)**

**[www.hamptons-international.com](http://www.hamptons-international.com)**