

Hamptons

INTERNATIONAL



©2025 NEFMLS, Inc

835 Laurel Valley Dr, Orange Park, FL 32065

5 🏠 4 🚗

£450,000

(\$605,000)

Property details



Key features

- **Garage Count: 2 Car Garage**

Attributes

- 📍 **Near golf course**

835 Laurel Valley Dr, Orange Park, FL 32065

5 🏠 4 📄

£450,000
(\$605,000)

Description

Located in the sought-after Eagle Landing golf community, this stunning two-story home is ideal for entertaining with an open floor plan that flows seamlessly from the gourmet kitchen to the family room and screened lanai overlooking the water. The kitchen features a large island, double ovens, custom tile backsplash, and soft-close cabinetry. Recently refreshed, the interior includes custom fixtures and built-ins throughout. The home offers five bedrooms and three-and-a-half baths, including a spacious primary suite with dual closets and spa-like bath with soaking tub and separate shower. A downstairs bedroom and full bath provide flexibility for guests, an office or an in-law suite. Upstairs, an oversized bonus room with a half bath is perfect for playroom or media space, while a secondary bedroom includes a charming nook with built-in storage. Residents enjoy Eagle Landing's resort-style amenities, including pools, fitness center, tennis courts, soccer fields, lakes and an 18 hole golf course with a pro shop and restaurant, making this home a perfect blend of comfort, versatility, and lifestyle.

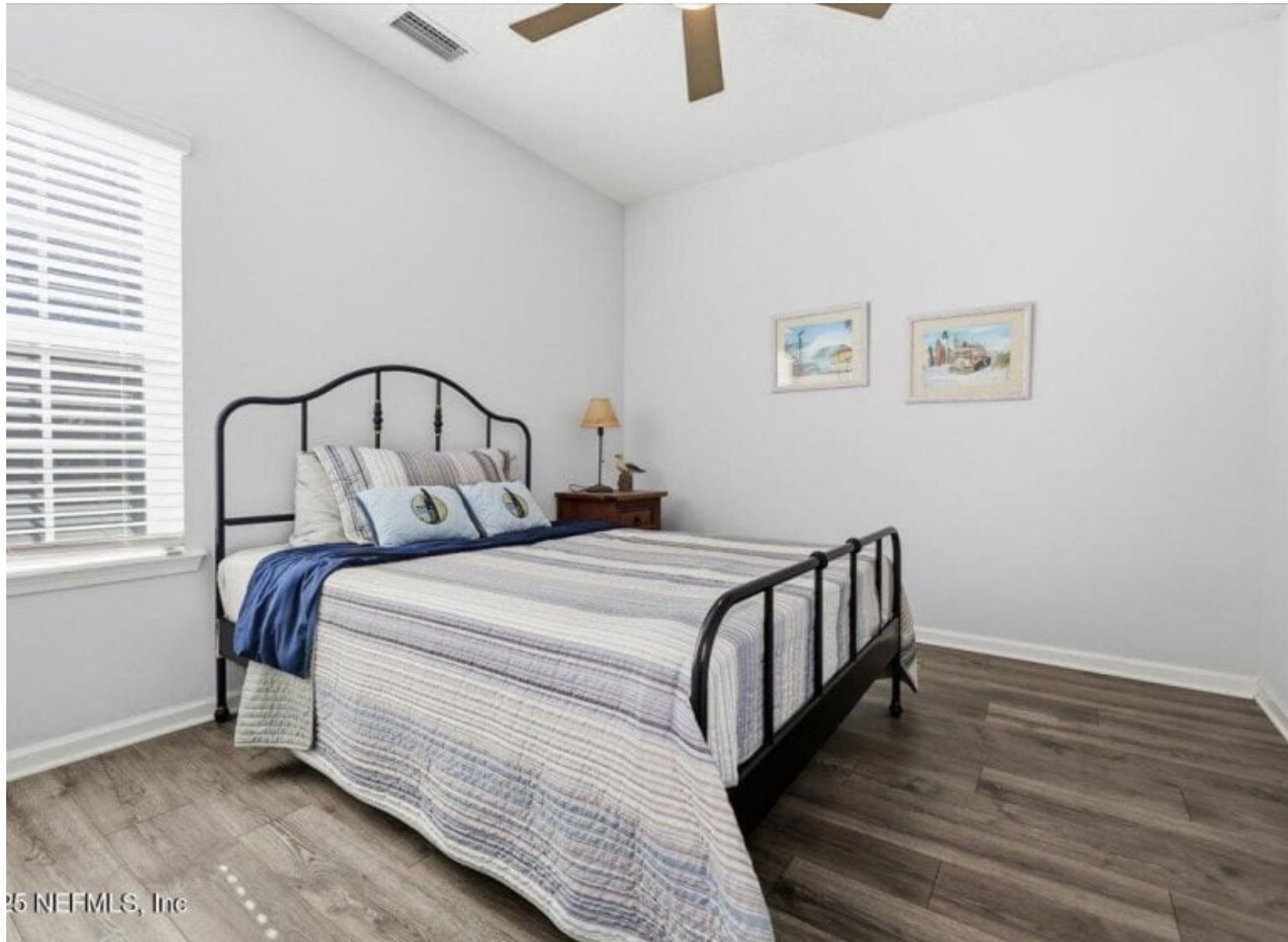
















25 NEFMLS, Inc







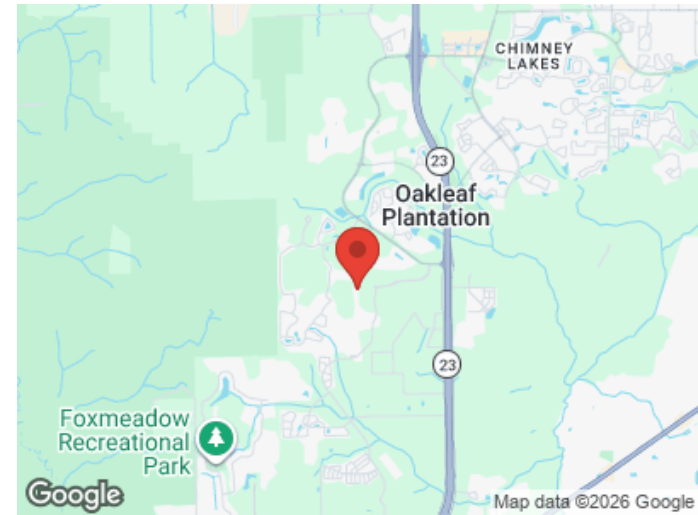
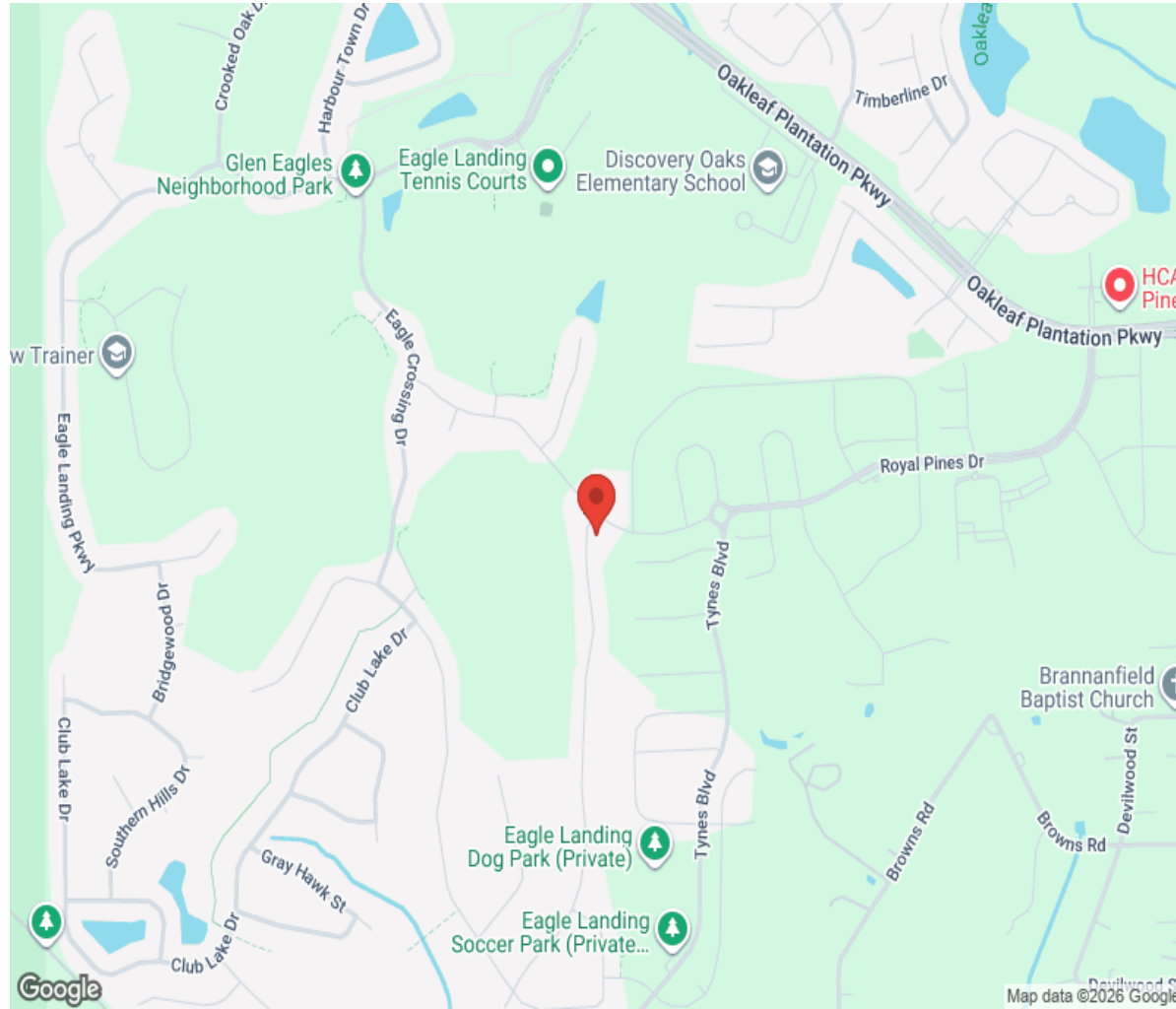






25 NEFMLS, Inc

Location



Hamptons

INTERNATIONAL

+44 (0)20 8618 4551

international@hamptons.co.uk

www.hamptons-international.com