

Hamptons

INTERNATIONAL



11 Two Rivers Ln, New Milford, CT 06776

4  4 

£520,000

(\$699,900)

Property details



Key features

- **Heating Type: Baseboard**
- **Water: Other Water Source**
- **Garage Count: 3 Car Garage**
- **Fireplace Count: 1 Fireplace**
- **Cooling: Central A/C**
- **Sewer: Septic**
- **Heating - Fuel Type: Oil**
- **Location: Backs to Golf Course**
- **Special Program: Global Luxury**

Attributes

 **With land**

11 Two Rivers Ln, New Milford, CT 06776

4  4 

£520,000
(\$699,900)

Description

The Next Jewel in Your Crown! Value, Condition, and Location-this one truly has it all. Set on a quiet cul-de-sac on the best lot in the neighborhood, this move-in-ready, like-new 4-bedroom Colonial offers 2 full baths, 2 half baths, and over 3,300 beautifully finished square feet across three thoughtfully designed levels. The main level features hardwood flooring, crown moldings, wood-burning fireplace, and a granite kitchen with center island and stainless-steel appliances. Additional highlights include a home office and rear deck access overlooking a private yard bordered by acres of open space-perfect for both everyday living and entertaining. Upstairs, you'll find a spacious and elegant primary ensuite, three generously sized additional bedrooms, a full laundry room, and convenient attic access. The lower-level recreation room may quickly become your favorite space, complete with a half bath, walk-out access to the patio, and a built-in masonry pizza oven with granite prep area, an entertainer's dream! Enjoy a peaceful, country-like setting while being just minutes from the historic New Milford Village Green and everything this acclaimed small town has to offer, including medical services, theater, and exceptional dining. Come see how this crown fits and make it the setting for your next adventure.

Bedroom 10.0ft x 12.0ft Bedroom 12.0ft x 12.0ft Bedroom 11.0ft x 13.0ft Eat-In Kitchen 13.0ft x 22.0ft Family Room 13.0ft x 24.0ft Formal Dining Room 12.0ft x 13.0ft Game Room 14.0ft x 23.0ft Living Room 11.0ft x 12.0ft Master Suite 20.0ft x 23.0ft Office 9.0ft x 12.0ft Recreational Room 14.0ft x 23.0ft





SMART























TOTAL: 3901 sq. ft.
1st Floor: 573 sq. ft., 2nd Floor: 1211 sq. ft., 3rd Floor: 1217 sq. ft.
EXCLUDED AREAS: COVERED PATIO: 469 sq. ft., ELECTRICAL ROOM: 92 sq. ft., GARAGE: 463 sq. ft.,
UTILITY: 29 sq. ft., DECK: 198 sq. ft., PORCH: 196 sq. ft.,
FINISHL: 13 sq. ft., OPEN TO BELOW: 51 sq. ft., WALLS: 252 sq. ft.

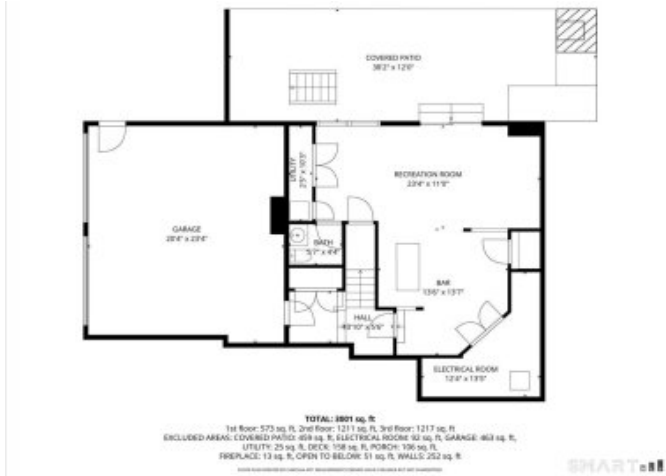
SMART



SMART









SMART





Location



Hamptons

INTERNATIONAL

+44 (0)20 8618 4551

international@hamptons.co.uk

www.hamptons-international.com