

# Hamptons

INTERNATIONAL



**650 Galway Dr, Bethel Park, PA 15102**

4 🏠 3 🚗

**£280,000**

**(\$375,000)**



## Property details



### Key features

- **Sewer: Public**
- **Fireplace Count: 1 Fireplace**
- **Cooling: Central A/C**
- **Heating Type: Forced Air**
- **Water: City Water**

### Attributes

-  **Garage**
-  **Private parking**

**650 Galway Dr, Bethel Park, PA 15102**

4  3 

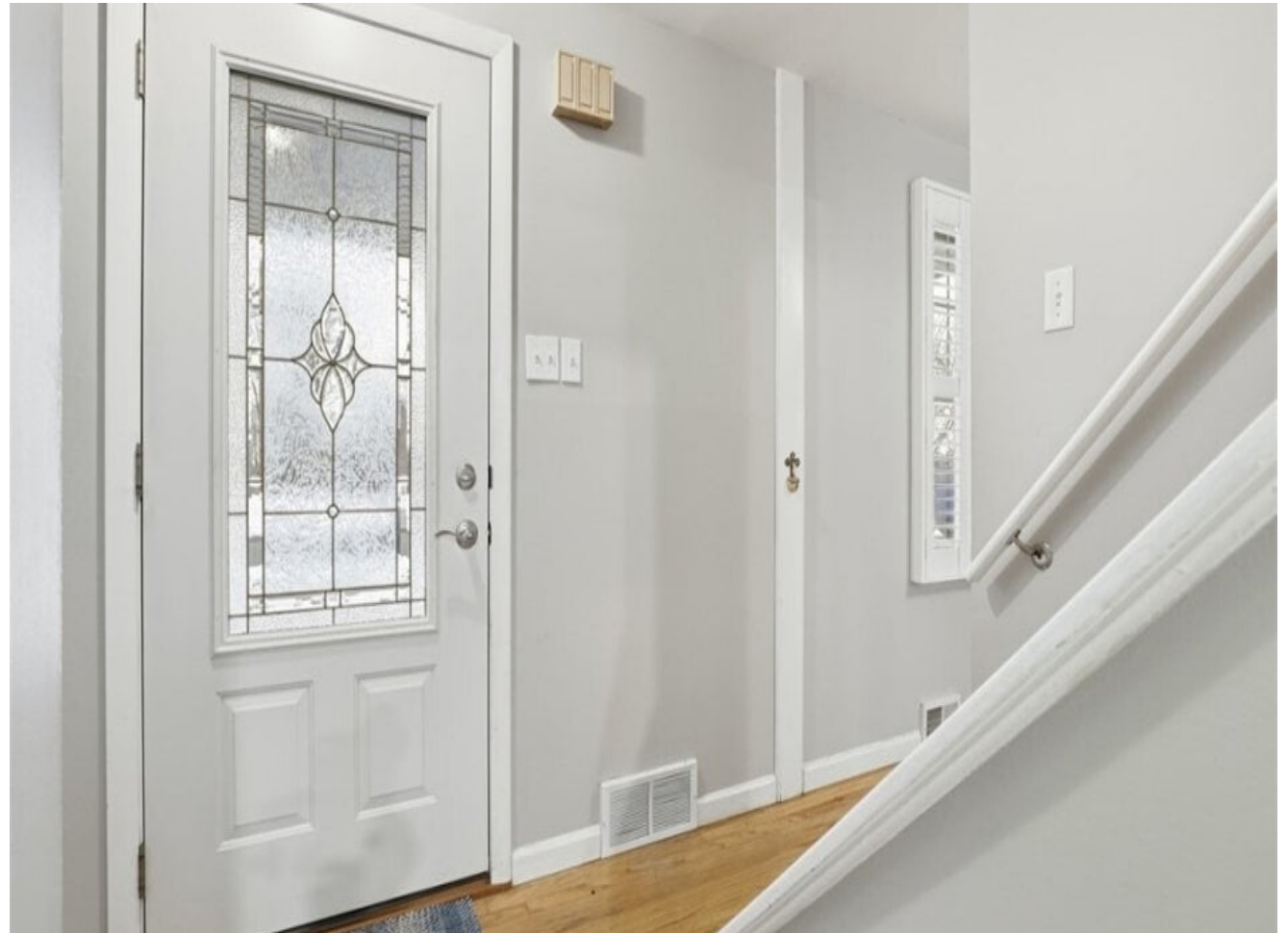
**£280,000**  
**(\$375,000)**

## Description

Welcome to 650 Galway Drive in Bethel Park, a well maintained 4 bedroom, 2.5 bath home offering space, flexibility, and everyday comfort. Unlike many homes where one bedroom functions better as an office or nursery, all four bedrooms here are true bedrooms with ample size and usability. The home features a large kitchen with excellent layout potential, offering an opportunity to further expand or customize the space to suit your needs. Just off the kitchen, enjoy a walk out porch ideal for outdoor use and entertaining. Additional highlights include a finished basement providing extra living or recreational space, a spacious two car garage, a large spacious yard, and a long paved driveway offering plenty of off street parking. The home is generator ready with a dedicated sub panel already in place for future hookup. Located on a quiet street within the Bethel Park School District, with convenient access to shopping, and dining. The sellers are providing a one year home warranty.







































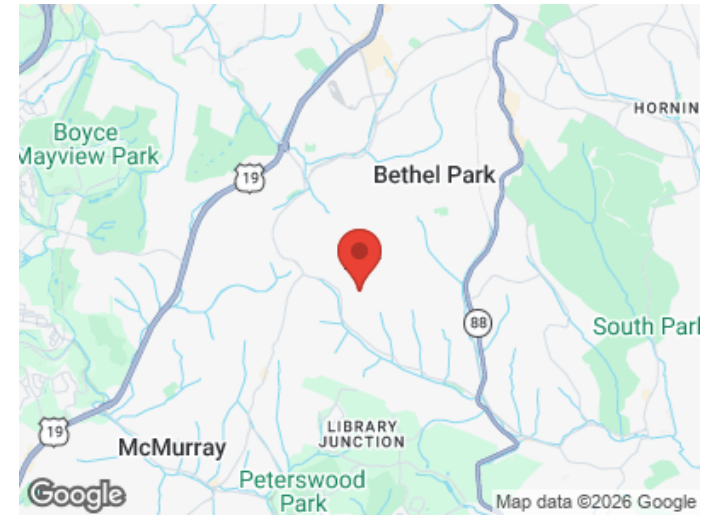






# Location

---



# Hamptons

INTERNATIONAL

**+44 (0)20 8618 4551**

**[international@hamptons.co.uk](mailto:international@hamptons.co.uk)**

**[www.hamptons-international.com](http://www.hamptons-international.com)**