

Hamptons

INTERNATIONAL



©2026 Hive MLS

39 Excalibur Pt, Hampstead, NC 28443

4  4 

£540,000

(\$725,000)

Property details



Key features

- **Basement: None**

Attributes

-  **Garage**
-  **Near golf course**
-  **Garden**

39 Excalibur Pt, Hampstead, NC 28443

4  4 

£540,000
(\$725,000)

Description

Welcome to this enchanted southern gem, situated in a cul-de-sac of a gated community in the heart of the coastal town of Hampstead. On your arrival, you can appreciate the extended driveway space and manicured landscaping which furthermore highlights the aesthetic appeal. As you enter the large foyer, you will immediately admire beautifully engineered hardwood floors and rich custom trim work and stunning transoms that will follow you on every step. On your right is situated an office with French glass doors and a vaulted ceiling and next to the office is a coat closet. On your left is a formal dining room with a tray ceiling and tall wainscoting awaiting its new owners to host their next holiday meals. A large and bright living room welcomes you and feels as though it was made for cozy evenings around a fireplace with a nice glass of wine, reading your favorite author, playing family games, conducting deep conversations or just watching movies. The open concept connects the living room with the gourmet kitchen which offers custom-built executive cabinetry which provides a wealth of storage space, glistening granite counter-tops, stainless-steel appliances; to include an elevated dishwasher for ease of loading, a working island with a prep sink, a pantry and a breakfast nook. A private Master Suite includes a tall tray ceiling, a double vanity with a storage linen cabinet, a custom tiled shower, a garden tub and a spacious walk-in closet. On the opposite side of the home, you can explore a second Master Suite with a double vanity and a shower/tub combo. Two spare bedrooms share a full bathroom and a linen closet. A large laundry room offers a sink, a counter-top for folding laundry and tons of storage cabinets, as well as a utility closet. Upstairs is located a bonus room with a full bathroom that can be used as fifth bedroom or a family room or a man cave. Let your imagination run wild. Enjoy your Southern tea on a screened-in porch with a custom tiled floor while overlooking this private piece of paradise. Invite your friends over to spend some time at an already established firepit, roast marshmallows, grill some Carolina BBQ or do some handywork in your oversized garage with a storage room or just get wild with your gardening skills. Looking for more fun and activities? Whether you decide to gather with neighbors at the community picnic area and basketball court or grab your boat at the community boat storage situated right behind the house and do some rip'n & grip'n, or hit a ball on some local golf courses or take a short drive and cross the bridge to Topsail island with highly rated beaches to relax and simply bask in the sun. This property is Southern Living at its finest! The absolutely amazing location of this property is another attractive feature to consider. Situated along the sparkling Intracoastal Waterway, with a short commute to the fabulous Kiwanis Park, highly rated schools, shopping, restaurants, many golf courses, ICW access, Topsail Island and Wrightsville beaches, and the city of Wilmington with a world class University, a tremendously growing network of businesses, and a historic river district. The home also features a water purification system, and the sellers are offering a one-year home warranty.





16 Hive MLS

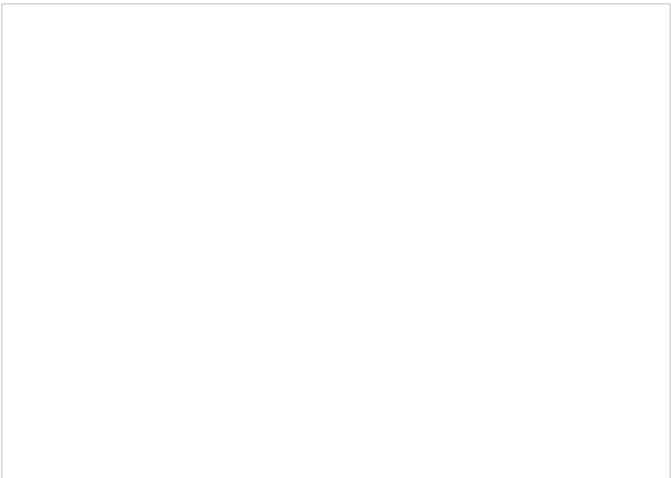






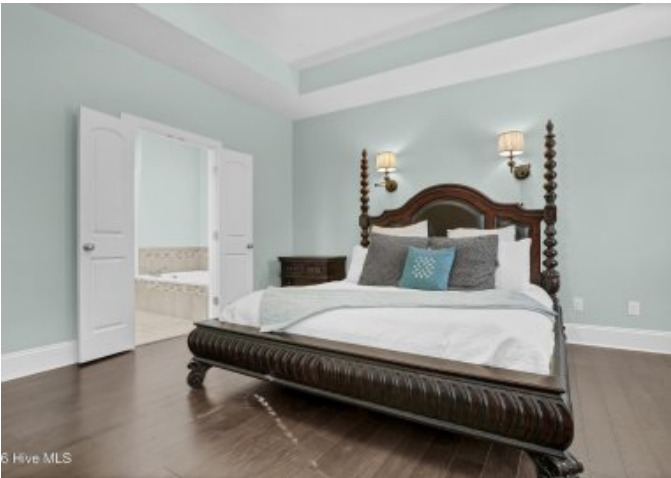
6 Hive MLS







26 Hive MLS





6 Hive MLS









6 Hive MLS





6 Hive MLS





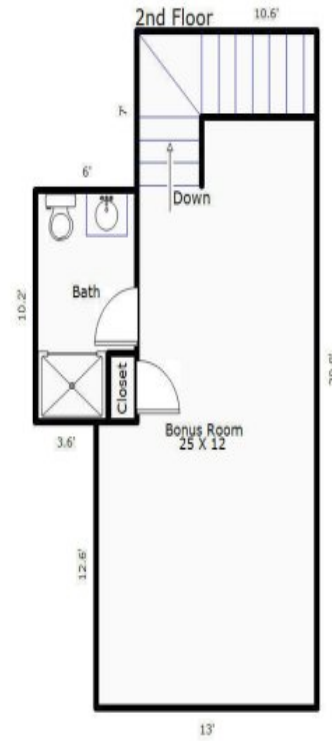




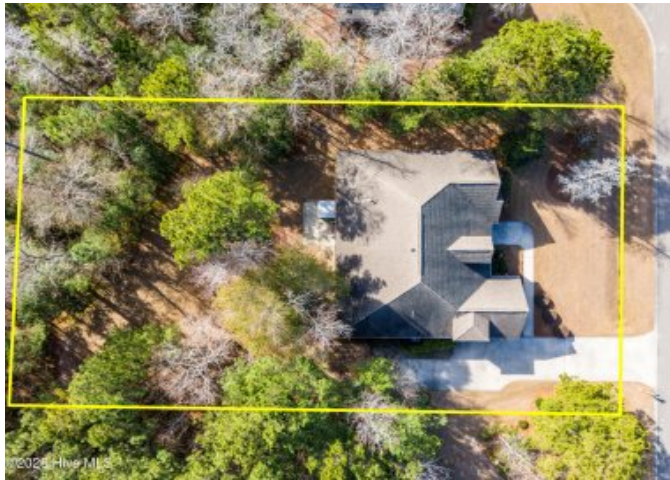




6 Hive MLS

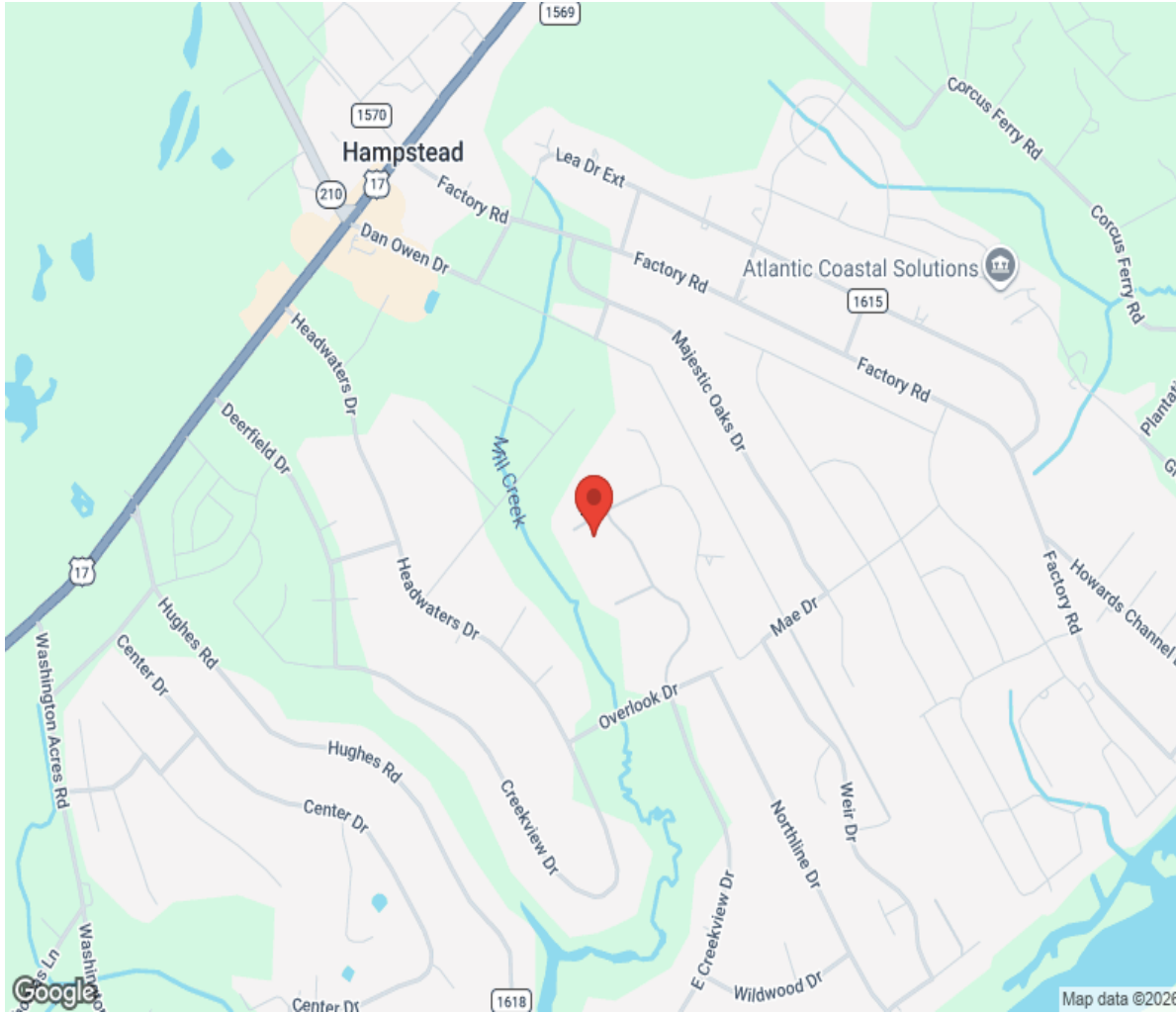








Location



Hamptons

INTERNATIONAL

+44 (0)20 8618 4551

international@hamptons.co.uk

www.hamptons-international.com