

Hamptons

INTERNATIONAL



5406200

217 Highland Ave, Orange, NJ 07050

6 🏠 4 🚗

£710,000

(\$955,000)

Property details



Key features

- **Garage Count: 2 Car Garage**
- **Heating - Fuel Type: Gas**
- **Sewer: Public**
- **Fireplace Count: 2 Fireplaces**
- **Water: City Water**
- **Special Program: Global Luxury**

Attributes

-  **Garage**
-  **Refurbished**

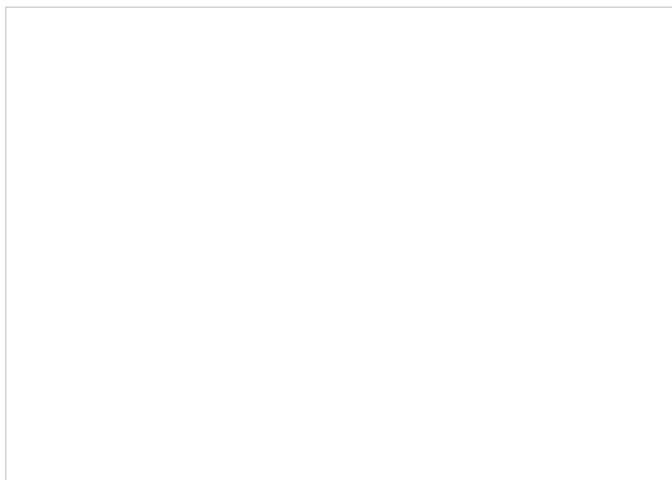
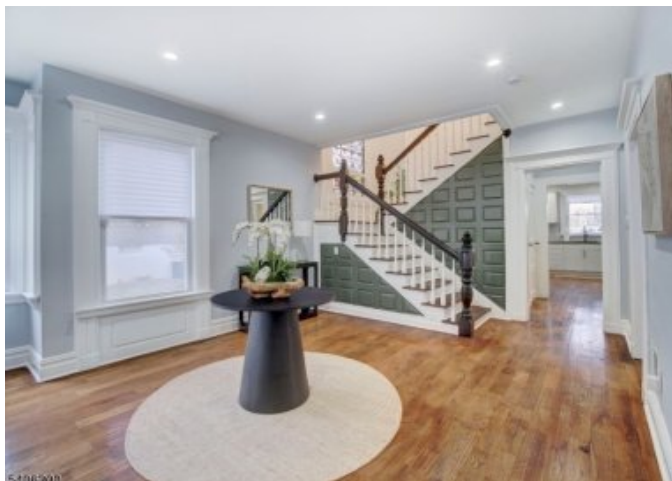
217 Highland Ave, Orange, NJ 07050

6 🏠 4 🚗

£710,000
(\$955,000)

Description

Welcome to a truly exceptional residence nestled in the heart of Seven Oaks, Orange's prestigious Historic District. This luxury colonial showcases striking curb appeal and refined architectural elegance. A grand foyer welcomes you, highlighted by a breathtaking center-piece leaded stained glass window that bathes the home in natural light and creates an unforgettable first impression. Fully renovated in 2019, this stately home offers 6 bedrooms, 3.5 baths, and a 2-car garage, which seamlessly blends classic architectural charm with refined living, offering space, grace, and distinction at every turn. The expansive living and dining areas flow effortlessly, creating an inviting atmosphere for holding memorable gatherings, while the generously sized bedrooms provide private retreats for peace and comfort. The primary suite is a true sanctuary, offering tranquility in a setting worthy of the home's stature. Step outside to a private enclosed backyard, an oasis perfect for entertaining or quiet moments of relaxation. Ideally located just minutes from various NYC train stations, this home delivers the rare combination of timeless elegance, modern comfort, and effortless commuter access. This is more than a home - it's a statement! Don't miss this exceptional opportunity- schedule your showing today. Luxury. Legacy. Location!

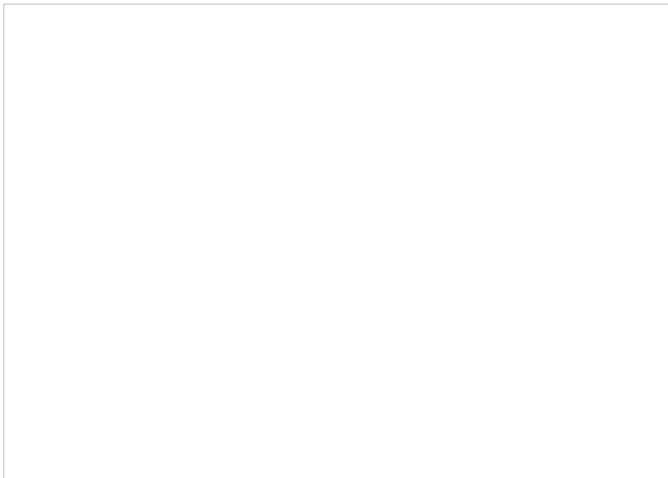








5406200





5406200









5406200





5406200





5406200

Location



Hamptons

INTERNATIONAL

+44 (0)20 8618 4551

international@hamptons.co.uk

www.hamptons-international.com